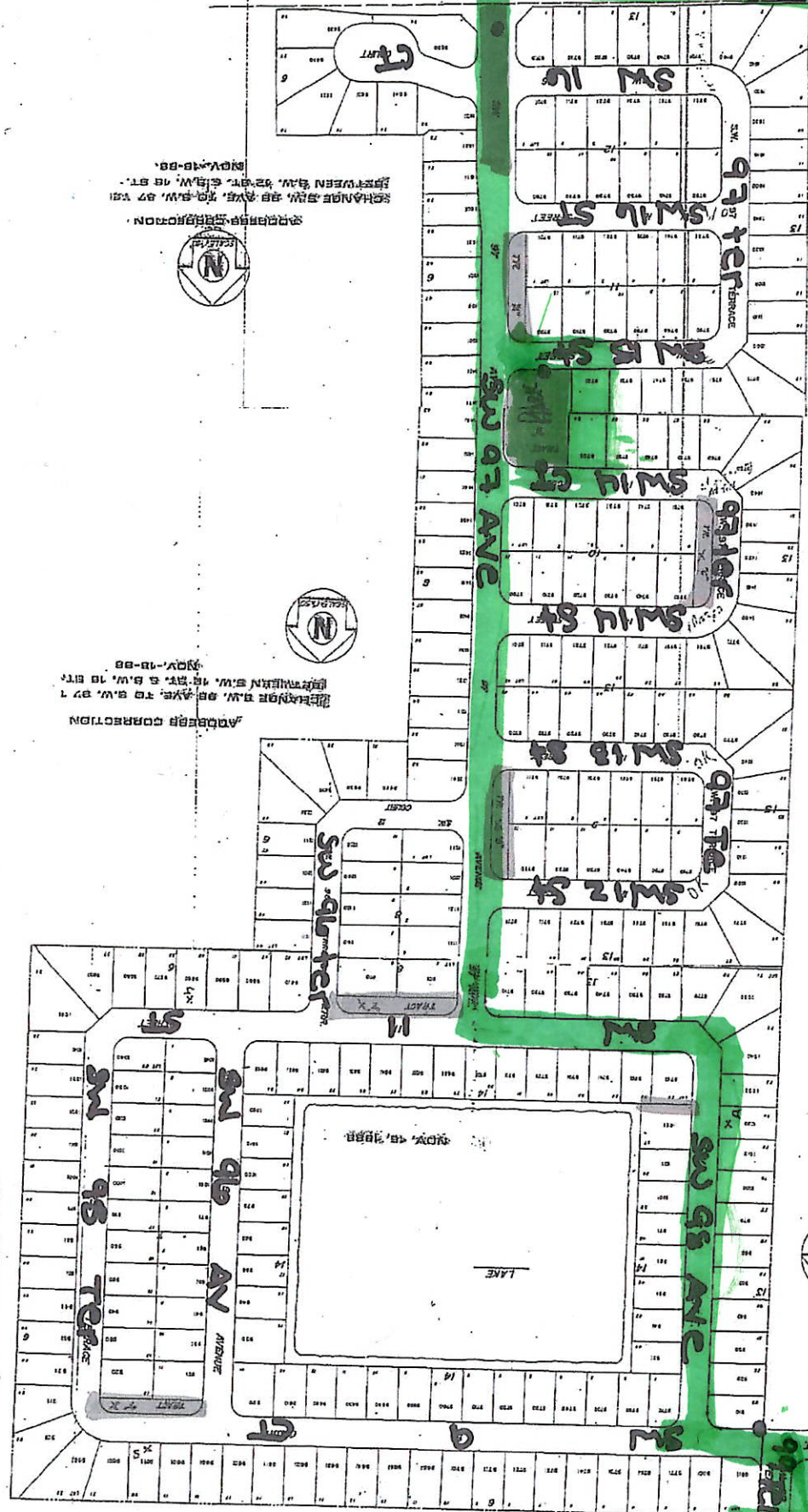


DE MARKS KE ROAD

Lakeside Key

ENTRANCE



SECTION 16, TOWNSHIP 34 N., RANGE 12 W., 47 1/2 W. 1/4
 SECTION 16, TOWNSHIP 34 N., RANGE 12 W., 47 1/2 W. 1/4
 NOV-19-88

SECTION 16, TOWNSHIP 34 N., RANGE 12 W., 47 1/2 W. 1/4
 SECTION 16, TOWNSHIP 34 N., RANGE 12 W., 47 1/2 W. 1/4
 NOV-19-88

ADDRESSES: LAKESIDE SOUTH PHASE II

To PALM AVE