

**Bailey Engineering Consultants, Inc.**

Bid Contact **Stephen Bailey, P.E.**  
**sbailey@baileyengineering.com**  
**Ph 561-819-0488**

Address **5300 W. Atlantic Ave. Suite 408**  
**Delray Beach, FL 33484**

Item #	Line Item	Notes	Unit Price	Qty/Unit	Attch.	Docs
PSEN-18-02--01-01	Please submit documents here.	Supplier Product Code:	First Offer -	1 / each	Y	Y
Supplier Total					\$0.00	

Bailey Engineering Consultants, Inc.

Item: **Please submit documents here.**

Attachments

RFQ PSEN- 18-02 Bailey Engineering Consultants, Inc..pdf

RFQ# PSEN- 18-02  
Professional Service  
Providers (Architectural,  
Engineering, Surveying &  
Mapping)

City of Pembroke Pines

Due: July 24, 2018

Presented by:



**Bailey Engineering Consultants, Inc.**

10620 Griffin Road, Suite 202

Cooper City, FL 33328

Ph: 954-448-7930 Fx: 954-713-9959

[sbailey@baileyengineering.com](mailto:sbailey@baileyengineering.com)

## TAB 1 – LETTER OF INTEREST



July 20, 2018

City of Pembroke Pines  
Purchasing Division  
8300 South Palm Drive  
Pembroke Pines, FL 33025

Re: Professional Service Providers (Architectural, Engineering, Surveying & Mapping)  
Request for Qualifications # PSEN-18-02

To Whom It May Concern,

Bailey Engineering Consultants, Inc. (BEC) is pleased to present our qualifications to provide Electrical Engineering services to the City of Pembroke Pines. BEC is a small Professional Engineering firm; however, our focus is sharp. We specialize in providing engineering services to municipalities and environmental engineering consultants.

BEC is a multi-disciplined consulting engineering firm specializing in electrical, instrumentation and SCADA system designs for Water and Wastewater projects. We provide consulting engineering services to the public and private sectors with preferential services for municipal and governmental clients.

Incorporated in 1992, we are a second generation consulting engineering firm with an office in Cooper City, Florida. Our water treatment plant design experience is diverse and includes electrical and control system designs for Ion Exchange Systems, Membrane Filtration, Reverse Osmosis Treatment, Ultra Filtration and Lime Softening. Our wastewater treatment plant design experience includes Chlorine, Ozone and Ultra-Violet Disinfection, Aerobic and Anaerobic Digestion, Membrane Bioreactors, Biosolids Treatment, Activated Sludge, Biological Processes and Nutrient Removal.

Our electrical distribution system experience covers from low voltage applications up to medium voltage 13 KV distribution system designs. We currently implement "smart" designs" on our projects and utilize data highways as a means to communicate to motor starters, variable frequency drives and motor monitoring equipment. We integrate our data highway systems seamlessly and reliably into plant control system insuring the end user of a fully redundant powerful power communication architecture.

Our instrumentation systems design experience includes SCADA and PC based systems. This experience encompasses computer/PLC controlled systems utilizing SCADA based systems for interfacing to remote locations, as well as hard wired relay controlled custom solutions.

Our staffing for this work includes professional electrical engineers, designers and CADD technicians. We are committed to responding quickly to the City's needs as they arise.

10620 GRIFFIN ROAD, SUITE 202, COOPER CITY, FLORIDA 33328  
TEL: 954-448-7930 • FAX: 954-713-9959 • WEB: [www.baileyengineering.com](http://www.baileyengineering.com)

The entire assigned BEC team will remain committed to the City's Contract to ensure each task will receive full dedication and necessary time. Our team member percentage of availability is as follows:

Name	Current Workload	Projected Workload	Availability
Stephen Bailey, P.E. (Point of Contact) President	65%	70%	30%
Jay Libo-on Engineer	40%	45%	55%
Damion Martin CADD Technician	40%	45%	55%
Steven Logofatu CADD Technician	40%	45%	55%

Enclosed we have provided information outlining the qualifications of our firm. We understand your expectations in the selection of a consultant. Service and design integrity are the cornerstones of our firm. Our past project history demonstrates our qualifications as they relate to your particular needs.

We are well aware of the City's commitment to design excellence. We are excited about the prospect of service as your electrical engineer on future projects.

Very truly yours,



Stephen E. Bailey, P.E.  
President

[sbailey@baileyengineering.com](mailto:sbailey@baileyengineering.com)

## TAB 2 – STANDARD FORM 330

## ARCHITECT - ENGINEER QUALIFICATIONS

### PART 1 - CONTRACT-SPECIFIC QUALIFICATIONS

#### A. CONTRACT INFORMATION

1. TITLE AND LOCATION (*City and State*)

Professional Service Providers (Architectural, Engineering, Surveying &amp; Mapping) (Pembroke Pines, FL)

2. PUBLIC NOTICE DATE

June 26, 2018

3. SOLICITATION OR PROJECT NUMBER

PSEN-18-02

#### B. ARCHITECT-ENGINEER POINT OF CONTACT

4. NAME AND TITLE

Stephen E. Bailey / President

5. NAME OF FIRM

Bailey Engineering Consultants, Inc.

6. TELEPHONE NUMBER

954-448-7930

7. FAX NUMBER

954-713-9959

8. E-MAIL ADDRESS

sbailey@baileyengineering.com

#### C. PROPOSED TEAM

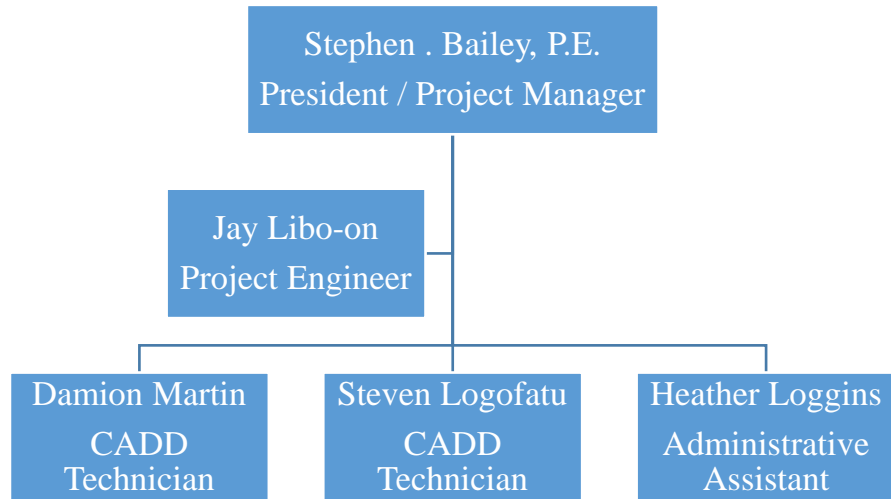
*(Complete this section for the prime contractor and all key subcontractors.)*

	(Check)			9. FIRM NAME	10. ADDRESS	11. ROLE IN THIS CONTRACT
	PRIME	J-V PARTNER	SUBCONTRACTOR			
a.	<input checked="" type="checkbox"/>			Bailey Engineering Consultants, Inc.  <input type="checkbox"/> CHECK IF BRANCH OFFICE	10620 Griffin Road, Suite 202 Cooper City, FL 33328	Electrical Engineer
b.				  <input type="checkbox"/> CHECK IF BRANCH OFFICE		
c.				  <input type="checkbox"/> CHECK IF BRANCH OFFICE		
d.				  <input type="checkbox"/> CHECK IF BRANCH OFFICE		
e.				  <input type="checkbox"/> CHECK IF BRANCH OFFICE		
f.				  <input type="checkbox"/> CHECK IF BRANCH OFFICE		

#### D. ORGANIZATIONAL CHART OF PROPOSED TEAM

☒ (Attached)



**D. ORGANIZATIONAL CHART OF PROPOSED TEAM**

**E. RESUMES OF KEY PERSONNEL PROPOSED FOR THIS CONTRACT***(Complete one Section E for each key person.)*

12. NAME Stephen Bailey	13. ROLE IN THIS CONTRACT Chief Electrical Engineer	14. YEARS EXPERIENCE	
		a. TOTAL 34	b. WITH CURRENT FIRM 26
15. FIRM NAME AND LOCATION <i>(City and State)</i> Bailey Engineering Consultants, Inc. (Cooper City, FL )			
16. EDUCATION <i>(DEGREE AND SPECIALIZATION)</i> Bachelors of Electrical Engineering Georgia Institute of Technology/1983		17. CURRENT PROFESSIONAL REGISTRATION <i>(STATE AND DISCIPLINE)</i> Florida Professional Engineer 42461 New York Professional Engineer 94774	
18. OTHER PROFESSIONAL QUALIFICATIONS <i>(Publications, Organizations, Training, Awards, etc.)</i> National Society of Professional Engineers (NSPE); Institute of Electrical and Electronic Engineers (IEEE); Florida Engineering Society (FES); National Fire Protection Association (NFPA); Instrument Society of America (ISA).			

**19. RELEVANT PROJECTS**

	(1) TITLE AND LOCATION <i>(City and State)</i>	(2) YEAR COMPLETED	
		PROFESSIONAL SERVICES	CONSTRUCTION <i>(If applicable)</i>
a.	Pembroke Pines WRF BCR Process Enhancements Pembroke Pines, Florida	2014	2015
	(3) BRIEF DESCRIPTION <i>(Brief scope, size, cost, etc.)</i> AND SPECIFIC ROLE Electrical and I&C design for the following components: BCR Neutralizer System; the relocated Biosolids Dewatering System; the relocated Biosolids Conveyor System.; the new WAS/Neutralizer feed pumps for the Neutralizer System; the new Return Lift Station for flows from the Neutralizer System; improvements required to support the new Neutralizer System and Dewatering System within the existing warehouse building, plus New WAS/Neutralizer Feed Lift Station and New Return Lift Station. I&C was incorporated into City existing I&C system.		
b.	Broward County Lift Stations 50N & 50M1 Broward County, FL	Ongoing	TBD
	(3) BRIEF DESCRIPTION <i>(Brief scope, size, cost, etc.)</i> AND SPECIFIC ROLE Bailey Engineering Consultants, Inc. was contracted to provide electrical, instrumentation and control design associated with the replacement of two (2) lift stations. Each lift station is a duplex pump station with across the line starters for each pump. Our scope included design of the Pump Control Panel (PCP), a Remote Telemetry Unit (RTU) and a portable standby generator.		
c.	Miramar East WTP Expansion Miramar, FL	2016	2019
	(3) BRIEF DESCRIPTION <i>(Brief scope, size, cost, etc.)</i> AND SPECIFIC ROLE Bailey Engineering Consultants, Inc. was contracted to provide electrical and instrumentation design for the Miramar East WTP upgrades project.		
d.	Tindall Hammock W/WWTP Improvements Davie, Florida	2015	2016
	(3) BRIEF DESCRIPTION <i>(Brief scope, size, cost, etc.)</i> AND SPECIFIC ROLE Bailey Engineering Consultants, Inc. (BEC) provided electrical, control system design and construction management services associated with the electrical system for the water and wastewater facilities, providing EPA Class 1 reliability		
e.	Groveland Lift Station No. 18 Groveland, FL	2015	2015
	(3) BRIEF DESCRIPTION <i>(Brief scope, size, cost, etc.)</i> AND SPECIFIC ROLE BEC provided design for a permanent standby generator for Groveland LS No. 18. This included design associated with the proposed duplex lift station. The design was based on the installation of two (2) 40-horsepower pumps with across the line starters. Our services also included the design of the Pump Control Panel system and a VT SCADA RTU.		

**E. RESUMES OF KEY PERSONNEL PROPOSED FOR THIS CONTRACT***(Complete one Section E for each key person.)*

12. NAME Jay Libo-on	13. ROLE IN THIS CONTRACT Engineer	14. YEARS EXPERIENCE	
		a. TOTAL 19	b. WITH CURRENT FIRM 19
15. FIRM NAME AND LOCATION <i>(City and State)</i> Bailey Engineering Consultants, Inc. (Cooper City, FL)			
16. EDUCATION <i>(DEGREE AND SPECIALIZATION)</i> Bachelors of Science in Electrical Engineering Florida Atlantic University/1999		17. CURRENT PROFESSIONAL REGISTRATION <i>(STATE AND DISCIPLINE)</i> Florida Engineer Intern No. 1100006452	
18. OTHER PROFESSIONAL QUALIFICATIONS <i>(Publications, Organizations, Training, Awards, etc.)</i>			

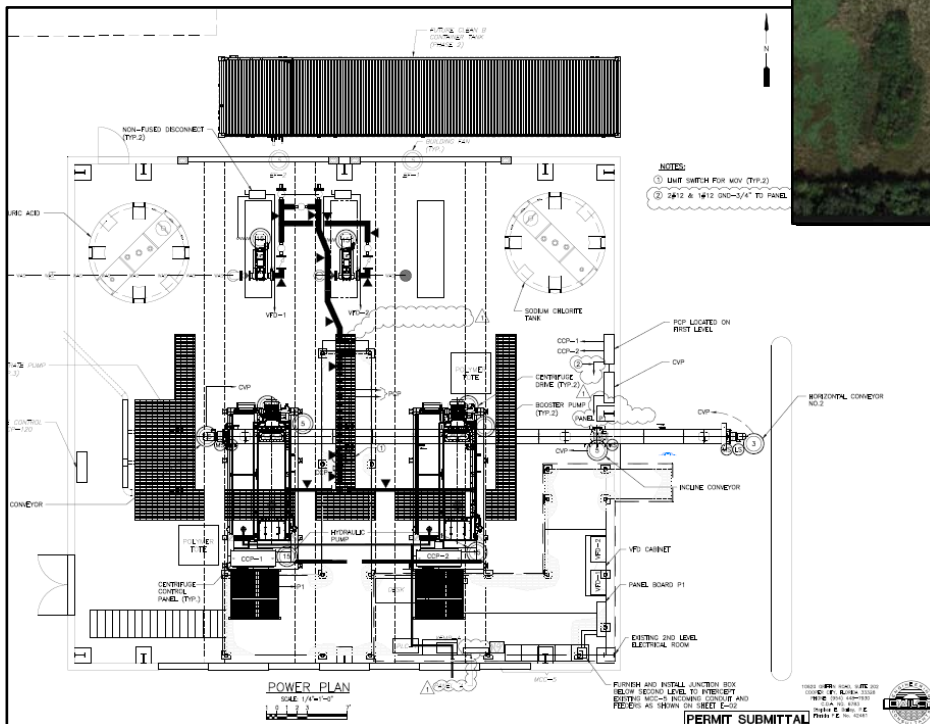
**19. RELEVANT PROJECTS**

	(1) TITLE AND LOCATION <i>(City and State)</i> VOSO/Southern Oaks Water Treatment Plan The Villages, FL	(2) YEAR COMPLETED	
		PROFESSIONAL SERVICES 2018	CONSTRUCTION <i>(If applicable)</i>
a.	(3) BRIEF DESCRIPTION <i>(Brief scope, size, cost, etc.)</i> AND SPECIFIC ROLE BEC provided design of electrical and control system improvements for the following facility improvements: Four (4) high service pumps at 150-horsepower (HP) each with VFDs; Instrumentation of for new ground storage tank; Two (2) wells at 100 HP each with VFDs; Two (2) Backwash Disposal Pumps at 50 HP each with VFDs; Two (2) Transfer Pumps at 25 HP constant speed; Two (2) iron removal filters and their associated control panels (Additive Alternate #1); and Permanent standby generator in a sound attenuated enclosure with a base mounted fuel tank.	<input checked="" type="checkbox"/> Check if project performed with current firm	
	(1) TITLE AND LOCATION <i>(City and State)</i> Oxford WTP Wildwood, FL	(2) YEAR COMPLETED	
		PROFESSIONAL SERVICES 2018	CONSTRUCTION <i>(If applicable)</i> 2018
b.	(3) BRIEF DESCRIPTION <i>(Brief scope, size, cost, etc.)</i> AND SPECIFIC ROLE Bailey Engineering Consultants, Inc. was contracted to provide design associated with the electrical and instrumentation components for the Oxford WTP.	<input checked="" type="checkbox"/> Check if project performed with current firm	
	(1) TITLE AND LOCATION <i>(City and State)</i> Margate WWTP Lift Station Improvements Margate, FL	(2) YEAR COMPLETED	
		PROFESSIONAL SERVICES 2018	CONSTRUCTION <i>(If applicable)</i>
c.	(3) BRIEF DESCRIPTION <i>(Brief scope, size, cost, etc.)</i> AND SPECIFIC ROLE Bailey Engineering Consultants, Inc. was contracted to provide electrical engineering design associated with the lift station improvements, including a new 480 volt triplex control panel with 10-horsepower pumps.	<input checked="" type="checkbox"/> Check if project performed with current firm	
	(1) TITLE AND LOCATION <i>(City and State)</i> Groveland Lift Station No. 18 Groveland, FL	(2) YEAR COMPLETED	
		PROFESSIONAL SERVICES 2015	CONSTRUCTION <i>(If applicable)</i> 2015
d.	(3) BRIEF DESCRIPTION <i>(Brief scope, size, cost, etc.)</i> AND SPECIFIC ROLE BEC provided design for a permanent standby generator for Groveland LS No. 18. This included design associated with the proposed duplex lift station. The design was based on the installation of two (2) 40-horsepower pumps with across the line starters. Our services also included the design of the Pump Control Panel system and a VT SCADA RTU.	<input checked="" type="checkbox"/> Check if project performed with current firm	
	(1) TITLE AND LOCATION <i>(City and State)</i> Margate Lift Station No. 22 Margate, FL	(2) YEAR COMPLETED	
		PROFESSIONAL SERVICES 2014	CONSTRUCTION <i>(If applicable)</i> 2015
e.	(3) BRIEF DESCRIPTION <i>(Brief scope, size, cost, etc.)</i> AND SPECIFIC ROLE BEC provided design of the electrical and control system for the duplex lift station improvements in accordance with the City standards. Our design included solid state starters for the pump motors.	<input checked="" type="checkbox"/> Check if project performed with current firm	

<b>F. EXAMPLE PROJECTS WHICH BEST ILLUSTRATE PROPOSED TEAM'S QUALIFICATIONS FOR THIS CONTRACT</b> <i>(Present as many projects as requested by the agency, or 10 projects, if not specified. Complete one Section F for each project.)</i>		20. EXAMPLE PROJECT KEY NUMBER 1
21. TITLE AND LOCATION <i>(City and State)</i> Pembroke Pines WRF BCR Process Enhancements Pembroke Pines, Florida		22. YEAR COMPLETED PROFESSIONAL SERVICES 2014 CONSTRUCTION <i>(If applicable)</i> 2015
<b>23. PROJECT OWNER'S INFORMATION</b>		
a. PROJECT OWNER City of Pembroke Pines	b. POINT OF CONTACT NAME Riley Smith	c. POINT OF CONTACT TELEPHONE NUMBER (954) 518-9060
24. BRIEF DESCRIPTION OF PROJECT AND RELEVANCE TO THIS CONTRACT <i>(Include scope, size, and cost)</i>		

Bailey Engineering Consultants, Inc. was contracted to provide electrical engineering services for the Pembroke Pines WRF BCR Process Enhancements Implementation project. Our scope of work was as follows:

1. Engineering design associated implementation of the BCR process improvements. The existing MCC was a Square D Model 5. This model of MCC was no longer in production. The following electrical modifications were proposed:
  - a. Removal of existing belt press control panels 1 and 2 located on the east wall and installation of a new 400 amp power panel in this location. Intercept the existing 400 amp MCC feeder from below floor and route new feeder to the new power panel.
  - b. Serve the following new loads from this power panel (the panel was not sized to serve future phase 2 loads):
    - i. Centrifuge Panels 1 and 2.
    - ii. Conveyor control panel.
    - iii. Sludge feed pump VFD 1 and 2. The existing sludge pump VFDs will be removed and the new VFDs installed in their location.
    - iv. Clean B process.

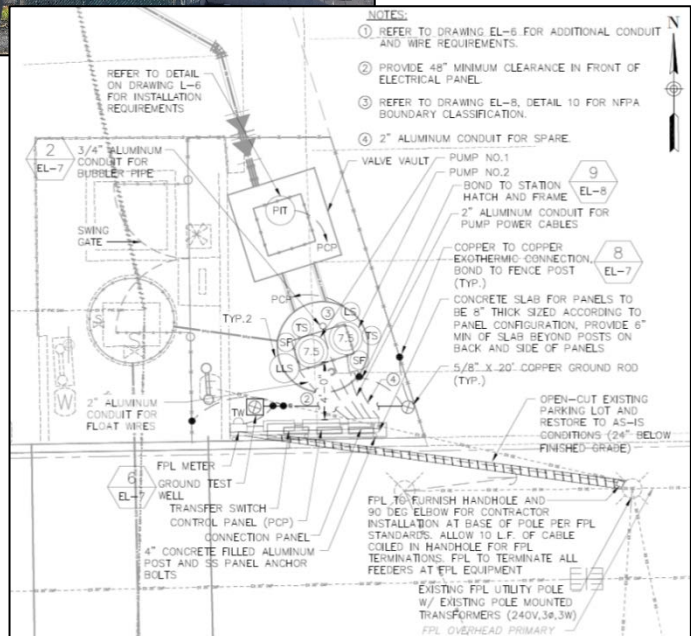


<b>25. FIRMS FROM SECTION C INVOLVED WITH THIS PROJECT</b>		
a. (1) FIRM NAME Bailey Engineering Consultants, Inc.	(2) FIRM LOCATION <i>(City and State)</i> Cooper City, FL	(3) ROLE Electrical Engineering

<b>F. EXAMPLE PROJECTS WHICH BEST ILLUSTRATE PROPOSED TEAM'S QUALIFICATIONS FOR THIS CONTRACT</b> <i>(Present as many projects as requested by the agency, or 10 projects, if not specified. Complete one Section F for each project.)</i>		20. EXAMPLE PROJECT KEY NUMBER 2
21. TITLE AND LOCATION <i>(City and State)</i> Broward County Lift Stations 50N & 50M1 Broward County, FL		22. YEAR COMPLETED PROFESSIONAL SERVICES Ongoing CONSTRUCTION <i>(If applicable)</i> TBD
<b>23. PROJECT OWNER'S INFORMATION</b>		
a. PROJECT OWNER Broward County	b. POINT OF CONTACT NAME Francisco Reina	c. POINT OF CONTACT TELEPHONE NUMBER 954-831-3250
24. BRIEF DESCRIPTION OF PROJECT AND RELEVANCE TO THIS CONTRACT <i>(Include scope, size, and cost)</i>		

Bailey Engineering Consultants, Inc. was contracted to provide electrical design for the referenced project. Our scope of work included the following:

1. Electrical, instrumentation and control design associated with the replacement of two (2) lift stations. Each lift station is a duplex pump station with across the line starters for each pump. Sizes for each proposed pump assumed to be less than 25-horsepower. All electrical distribution equipment was installed outdoors.
2. Our services also included the design of the Pump Control Panel (PCP) designed in accordance with Broward County standards.
3. A Broward County standard Remote Telemetry Unit (RTU) was provided as part of our design.
4. Electrical design associated with providing a portable standby generator for each lift station.
5. Coordination with the Florida Power & Light (FPL) as required to establish electrical service for the proposed facilities.



Lift Station 50M1 Proposed Electrical Plan

25. FIRMS FROM SECTION C INVOLVED WITH THIS PROJECT		
a. (1) FIRM NAME Bailey Engineering Consultants, Inc.	(2) FIRM LOCATION <i>(City and State)</i> Cooper City, FL	(3) ROLE Electrical Engineering

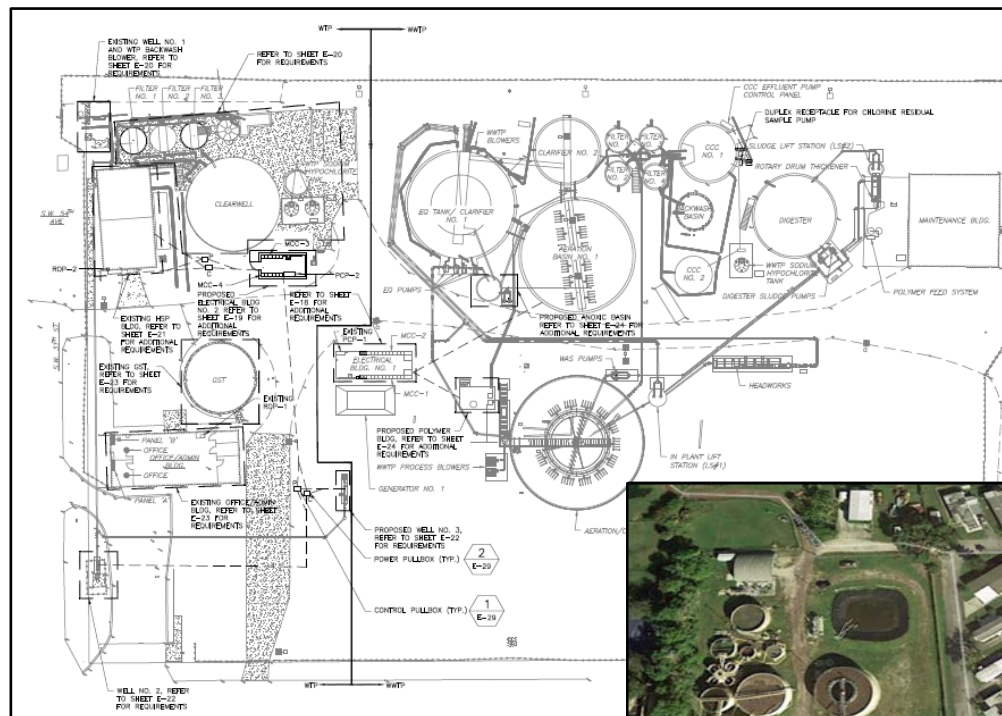
<b>F. EXAMPLE PROJECTS WHICH BEST ILLUSTRATE PROPOSED TEAM'S QUALIFICATIONS FOR THIS CONTRACT</b> <i>(Present as many projects as requested by the agency, or 10 projects, if not specified. Complete one Section F for each project.)</i>		20. EXAMPLE PROJECT KEY NUMBER 3
21. TITLE AND LOCATION (City and State) Tindall Hammock W/WWTP Improvements Davie, Florida		22. YEAR COMPLETED PROFESSIONAL SERVICES 2015 CONSTRUCTION (If applicable) 2016
<b>23. PROJECT OWNER'S INFORMATION</b>		
a. PROJECT OWNER Town of Davie	b. POINT OF CONTACT NAME Robert Salerno	c. POINT OF CONTACT TELEPHONE NUMBER 954-587-0340
24. BRIEF DESCRIPTION OF PROJECT AND RELEVANCE TO THIS CONTRACT (Include scope, size, and cost)		

Bailey Engineering Consultants, Inc. (BEC) provided electrical, control system design and construction management services associated with the electrical system for the water and wastewater facilities, providing EPA Class 1 reliability. The system includes:

1. New generator system to augment the existing generator capacity. The fuel associated with the standby generator was base mounted and the entire assembly was housed in a weatherproof sound attenuated enclosure.
2. The electrical system included a re-feed of the 400A, 3P and 200A, 3P breakers serving the Water Treatment Plant.
3. The electrical and instrumentation systems associated with the new WWTP No.2 treatment process.
4. The electrical system included the re-feed of the existing process components including:

- a. Blowers
- b. Backwash Pumps
- c. Mudwell Pumps
- d. Effluent Pumps
- e. Misc. Plant Lighting

BEC provided instrumentation design associated with the process Control and Monitoring for the existing and new WWTP processes. The system included available I/O for future Water treatment plant additions.



PROPOSED ELECTRICAL SITE PLAN



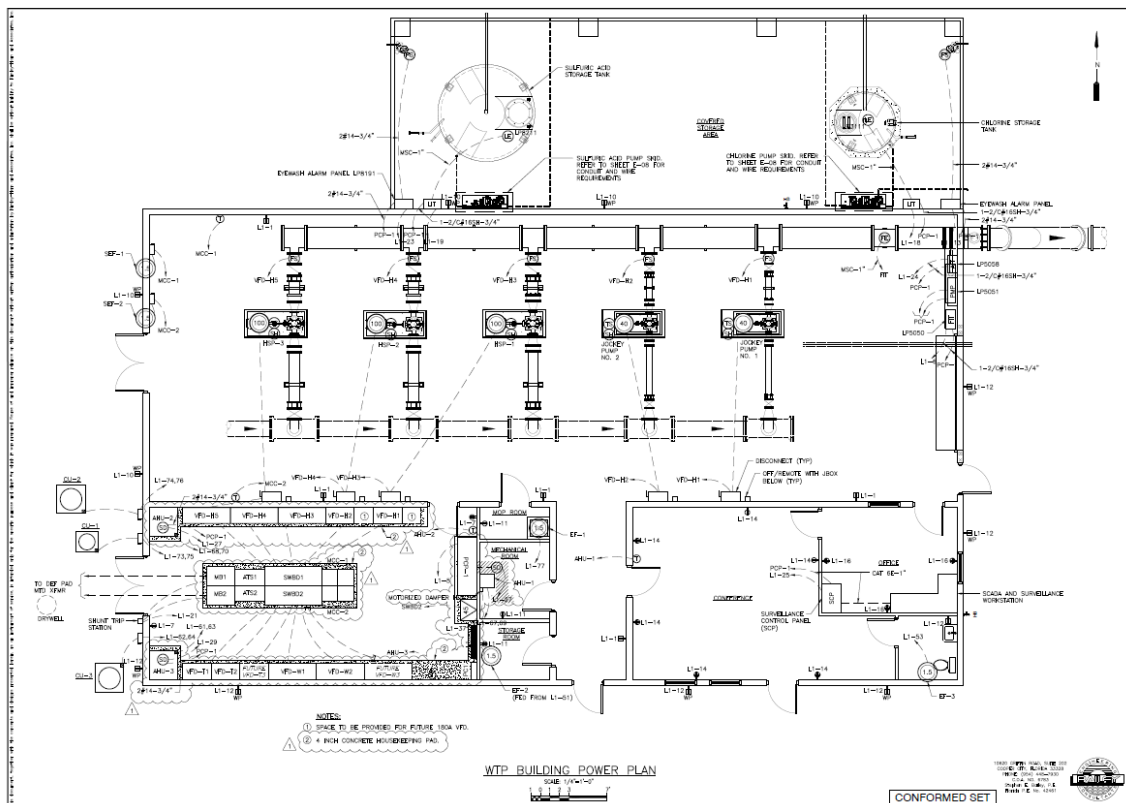
<b>25. FIRMS FROM SECTION C INVOLVED WITH THIS PROJECT</b>		
a. (1) FIRM NAME Bailey Engineering Consultants, Inc.	(2) FIRM LOCATION (City and State) Cooper City, FL	(3) ROLE Electrical Engineering



<b>F. EXAMPLE PROJECTS WHICH BEST ILLUSTRATE PROPOSED TEAM'S QUALIFICATIONS FOR THIS CONTRACT</b> <i>(Present as many projects as requested by the agency, or 10 projects, if not specified. Complete one Section F for each project.)</i>		<b>20. EXAMPLE PROJECT KEY NUMBER</b> 4				
<b>21. TITLE AND LOCATION (City and State)</b> Oxford WTP Wildwood, FL		<b>22. YEAR COMPLETED</b> <table border="1"> <tr> <td>PROFESSIONAL SERVICES</td> <td>CONSTRUCTION (If applicable)</td> </tr> <tr> <td>2018</td> <td>2018</td> </tr> </table>	PROFESSIONAL SERVICES	CONSTRUCTION (If applicable)	2018	2018
PROFESSIONAL SERVICES	CONSTRUCTION (If applicable)					
2018	2018					
<b>23. PROJECT OWNER'S INFORMATION</b>						
<b>a. PROJECT OWNER</b> City of Wildwood	<b>b. POINT OF CONTACT NAME</b> Chris Picardi, Utility Director	<b>c. POINT OF CONTACT TELEPHONE NUMBER</b> (352) 330-1346				
<b>24. BRIEF DESCRIPTION OF PROJECT AND RELEVANCE TO THIS CONTRACT (Include scope, size, and cost)</b>						

Bailey Engineering Consultants, Inc. was contracted to provide design associated with the electrical and instrumentation components for the Oxford WTP. Our scope of work included the following:

1. High Service and well pump electrical.
2. Integration of vendor provided controls into the overall process control system enhancements for the project.
3. Emergency power system with base mounted fuel tankage. Power and controls for all chemical systems.
4. Power and controls for two (2) proposed wells.
5. Power and controls for packed tower aerators (pumps).
6. Integration of plant control system PLCs into the County wide HMI control system.
7. Integration of security and access control systems per County standards.



<b>F. EXAMPLE PROJECTS WHICH BEST ILLUSTRATE PROPOSED TEAM'S QUALIFICATIONS FOR THIS CONTRACT</b> <i>(Present as many projects as requested by the agency, or 10 projects, if not specified. Complete one Section F for each project.)</i>		20. EXAMPLE PROJECT KEY NUMBER 5				
21. TITLE AND LOCATION <i>(City and State)</i> Palm Coast Wastewater Treatment Plant No. 2 Palm Coast, FL		22. YEAR COMPLETED <table border="1"> <tr> <td>PROFESSIONAL SERVICES</td> <td>CONSTRUCTION <i>(If applicable)</i></td> </tr> <tr> <td>2014</td> <td>2017</td> </tr> </table>	PROFESSIONAL SERVICES	CONSTRUCTION <i>(If applicable)</i>	2014	2017
PROFESSIONAL SERVICES	CONSTRUCTION <i>(If applicable)</i>					
2014	2017					
<b>23. PROJECT OWNER'S INFORMATION</b>						
a. PROJECT OWNER City of Palm Coast	b. POINT OF CONTACT NAME Pat Henderson	c. POINT OF CONTACT TELEPHONE NUMBER 386-931-8020				

24. BRIEF DESCRIPTION OF PROJECT AND RELEVANCE TO THIS CONTRACT *(Include scope, size, and cost)*

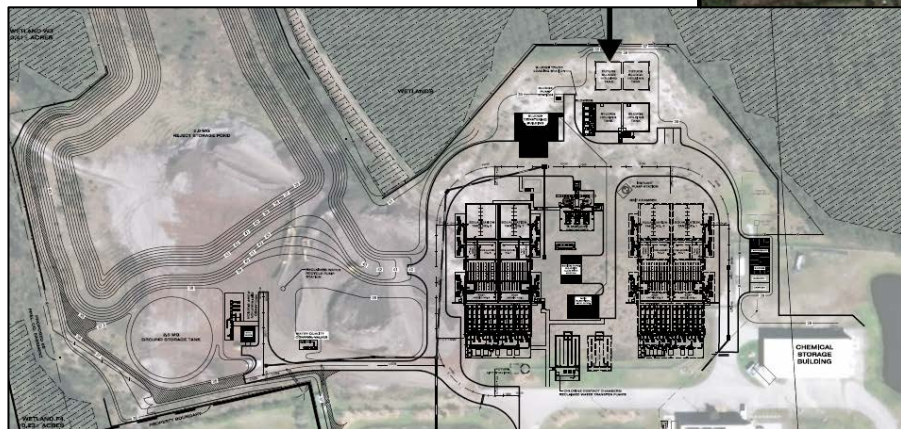
Bailey Engineering Consultants, Inc. was contracted to provide electrical and instrumentation services for the referenced project. Our scope of work included the following:

The WWTP No. 2 uses MBR wastewater treatment process which has been a state-of-the-art technology to meet the AWT standards. MBR has been a viable wastewater treatment alternative because it can handle higher mixed liquor suspended solids (MLSS) concentrations and produce high-quality effluent. The footprint of an MBR facility is much smaller than that of a conventional activated sludge process because it doesn't need secondary clarifiers.

The WWTP No. 2 had an initial capacity of 2.0 MGD, AADF and was designed to accommodate future expansion to an ultimate capacity of 4.0 MGD or higher. The wastewater treatment system consists of headworks, flow equalization tank, fermentation (anaerobic) zone, primary anoxic zone, aerobic nitrification zone, secondary anoxic zone, MBR tanks, disinfection chlorine contact chamber, and sludge treatment facilities.

The MBR was designed to produce permeate using gravity head. Four permeate pumps will also be installed as standby. If the permeate flow remains below the set point, the permeate pumps will start to increase flow as required. For each membrane unit in the MBR, air scouring aeration blowers are installed for membrane cleaning and mixing requirements. Permeate will be conveyed to the chlorine contact chamber for disinfection. The ML from the MBR tank is returned to the nitrification tank at a recycle rate of 3Q -5Q by internal recycle pumps to maintain certain amount of biomass and to return DO to the nitrification tank. Waste activated sludge is pumped to sludge holding tank for further treatment.

Bailey Engineering provided the complete Power, control security systems design for the entire facility. The power system involved upgraded the facilities emergency power system as well as installing 4000 amp, 480 volt double ended metal clad switchgear. The control system improvements included coordinating the supply of the MBR controls with the total plant controls being provided by a third party integrator and also the upgrades to the City's SCADA network as necessary to allow this facility to act as 1 of 3 repeaters installed throughout the City.



<b>25. FIRMS FROM SECTION C INVOLVED WITH THIS PROJECT</b>		
a. (1) FIRM NAME Bailey Engineering Consultants, Inc.	(2) FIRM LOCATION <i>(City and State)</i> Cooper City, FL	(3) ROLE Electrical Engineering





<b>F. EXAMPLE PROJECTS WHICH BEST ILLUSTRATE PROPOSED TEAM'S QUALIFICATIONS FOR THIS CONTRACT</b> <i>(Present as many projects as requested by the agency, or 10 projects, if not specified. Complete one Section F for each project.)</i>		20. EXAMPLE PROJECT KEY NUMBER 7				
21. TITLE AND LOCATION <i>(City and State)</i> CSU Wastewater Treatment Plant The Villages, Florida		22. YEAR COMPLETED <table border="1"> <tr> <td>PROFESSIONAL SERVICES</td> <td>CONSTRUCTION <i>(If applicable)</i></td> </tr> <tr> <td>2010</td> <td>2012</td> </tr> </table>	PROFESSIONAL SERVICES	CONSTRUCTION <i>(If applicable)</i>	2010	2012
PROFESSIONAL SERVICES	CONSTRUCTION <i>(If applicable)</i>					
2010	2012					
<b>23. PROJECT OWNER'S INFORMATION</b>						
a. PROJECT OWNER Central Sumter Utility	b. POINT OF CONTACT NAME Trey Arnett	c. POINT OF CONTACT TELEPHONE NUMBER 352-753-4747				

24. BRIEF DESCRIPTION OF PROJECT AND RELEVANCE TO THIS CONTRACT *(Include scope, size, and cost)*

Bailey Engineering Consultants, Inc. (BEC) provided design and construction management services for this \$13-million wastewater treatment facility.

This design-build project consisted of the design and construction of a 2.0 MGD wastewater plant. Construction included two oxidation ditches, a mixed liquor splitter box, two 70' diameter clarifiers, headworks, RAS/WAS pump station, effluent filters, chlorine contact basin, hypochlorite building, four sludge holding tanks, an emergency generator, an electrical building, a sludge press building with belt press equipment, a plant recycle pump station and yard piping. Work also included the re-design of a plant with 100 HP aerators for higher wastewater strength loadings, a 400,000 gallon surge tank with cover and odor control.

Services Provided:

- Electrical Engineering
- Instrumentation Engineering
- Client Interface
- Multi-discipline Coordination
- Cost Estimating
- Construction Administration



<b>25. FIRMS FROM SECTION C INVOLVED WITH THIS PROJECT</b>		
a. (1) FIRM NAME Bailey Engineering Consultants, Inc.	(2) FIRM LOCATION <i>(City and State)</i> Cooper City, FL	(3) ROLE Electrical Engineering

<b>F. EXAMPLE PROJECTS WHICH BEST ILLUSTRATE PROPOSED TEAM'S QUALIFICATIONS FOR THIS CONTRACT</b> <i>(Present as many projects as requested by the agency, or 10 projects, if not specified. Complete one Section F for each project.)</i>		20. EXAMPLE PROJECT KEY NUMBER 8				
21. TITLE AND LOCATION <i>(City and State)</i> Lift Station A & Island WRF VFD Replacement & Control System Mods FPUA – Fort Pierce, FL		22. YEAR COMPLETED <table border="1"> <tr> <td>PROFESSIONAL SERVICES</td> <td>CONSTRUCTION <i>(If applicable)</i></td> </tr> <tr> <td>2014</td> <td>2015</td> </tr> </table>	PROFESSIONAL SERVICES	CONSTRUCTION <i>(If applicable)</i>	2014	2015
PROFESSIONAL SERVICES	CONSTRUCTION <i>(If applicable)</i>					
2014	2015					
<b>23. PROJECT OWNER'S INFORMATION</b>						
a. PROJECT OWNER St. Lucie County	b. POINT OF CONTACT NAME James Carnes	c. POINT OF CONTACT TELEPHONE NUMBER (772) 466-1600				
24. BRIEF DESCRIPTION OF PROJECT AND RELEVANCE TO THIS CONTRACT <i>(Include scope, size, and cost)</i>						

Bailey Engineering Consultants, Inc. was retained as a subconsultant to provide the design and construction administration for the VFD and control system replacement at both Lift Station A and the Island WRF facilities. Design allowed for continuous operation of both facilities throughout the changeover. The VFDs were Owner purchased allowing for the production of the VFDs to occur while the project design and bidding was completed. This allowed for an accelerated construction time period. Our scope of work was as follows:

- Electrical and I&C engineering services associated with the design for the replacement of the VFDs at Lift Station A.
- Electrical and I&C engineering services associated with the upgrades to the existing Modicon PLC at the facility with current technology.
- BEC visited the site and observed existing conditions.



<b>25. FIRMS FROM SECTION C INVOLVED WITH THIS PROJECT</b>		
a. (1) FIRM NAME Bailey Engineering Consultants, Inc.	(2) FIRM LOCATION <i>(City and State)</i> Cooper City, FL	(3) ROLE Electrical Engineering

<b>F. EXAMPLE PROJECTS WHICH BEST ILLUSTRATE PROPOSED TEAM'S QUALIFICATIONS FOR THIS CONTRACT</b> <i>(Present as many projects as requested by the agency, or 10 projects, if not specified. Complete one Section F for each project.)</i>		20. EXAMPLE PROJECT KEY NUMBER 9				
21. TITLE AND LOCATION <i>(City and State)</i> Gulfstream Racetrack Clubhouse Hallandale, Florida		22. YEAR COMPLETED <table border="1"> <tr> <td>PROFESSIONAL SERVICES</td> <td>CONSTRUCTION <i>(If applicable)</i></td> </tr> <tr> <td>2006</td> <td>2007</td> </tr> </table>	PROFESSIONAL SERVICES	CONSTRUCTION <i>(If applicable)</i>	2006	2007
PROFESSIONAL SERVICES	CONSTRUCTION <i>(If applicable)</i>					
2006	2007					
<b>23. PROJECT OWNER'S INFORMATION</b>						
a. PROJECT OWNER Stronach Group	b. POINT OF CONTACT NAME Mr. Otto V. Kirchheiner, Jr.	c. POINT OF CONTACT TELEPHONE NUMBER (305) 642-7822				
24. BRIEF DESCRIPTION OF PROJECT AND RELEVANCE TO THIS CONTRACT <i>(Include scope, size, and cost)</i>						

Gulfstream Racetrack Clubhouse: The 2006 meet marked the beginning of a new era at Gulfstream Park. In the midst of a massive renovation project the racetrack dramatically altered the look of the facility and ushered in a new era of racing and entertainment. Plans included a racing and entertainment venue revolutionary in its scope and amenities. The new state-of-the-art facility features five spectacular restaurants, 20 luxury suites, private accommodations for our top players, and much more.

As part of a Design-Build Team Bailey Engineering Consultants worked jointly with the building architect and contractors in the design and construction of a complete power distribution system, decorative lighting, interior and exterior, specialty systems including fire alarm, CCTV, security and pari-mutuel betting systems. Design also included the site wide electrical distribution system supporting the track, the barns and the dormitories.

Services Provided:

- Electrical Engineering
- Client Interface
- Multi-discipline Coordination
- Cost Estimating
- Shop Drawing Review
- Permitting Agency Coordination



<b>25. FIRMS FROM SECTION C INVOLVED WITH THIS PROJECT</b>		
a. (1) FIRM NAME Bailey Engineering Consultants, Inc.	(2) FIRM LOCATION <i>(City and State)</i> Cooper City, FL	(3) ROLE Electrical Engineering



<b>F. EXAMPLE PROJECTS WHICH BEST ILLUSTRATE PROPOSED TEAM'S QUALIFICATIONS FOR THIS CONTRACT</b> <i>(Present as many projects as requested by the agency, or 10 projects, if not specified. Complete one Section F for each project.)</i>		20. EXAMPLE PROJECT KEY NUMBER 10
21. TITLE AND LOCATION <i>(City and State)</i> Wooten Park Tavares, Florida		22. YEAR COMPLETED PROFESSIONAL SERVICES 2009 CONSTRUCTION <i>(If applicable)</i>

### 23. PROJECT OWNER'S INFORMATION

a. PROJECT OWNER City of Tavares	b. POINT OF CONTACT NAME Chris Thompson	c. POINT OF CONTACT TELEPHONE NUMBER 352-742-6456
-------------------------------------	--	--

#### 24. BRIEF DESCRIPTION OF PROJECT AND RELEVANCE TO THIS CONTRACT *(Include scope, size, and cost)*

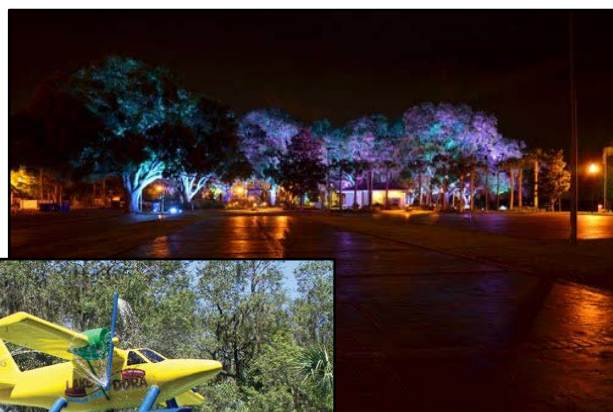
Located in Central, Florida, Tavares, America's Seaplane City, wanted to revitalize its downtown area. The seaplane airport/gas station located on the adjacent Lake Dora had been completely renovated and officials wanted to add a showcase spraypark to the area. The park would also be a central showcase point for the annual Sea Plane Festival, held in the city.

Completed in 2009, the entire project was custom designed with a sea plane-themed design. The central element is the Rain Plane feature, designed to be a replica of the sea planes that use the local airport, complete with working propellers and lights, and even the Cool Tails splash water onto the propellers as they turn to create the effect of splashing down into the water.

The \$8 million upgrade project in Wooten Park, included an 83-slip marina, ships store modeled after the historic Woodlea House, new sea plane ramp, fueling facilities for seaplanes and boats, and a custom LED lighting and sound system that illuminates the surrounding canopy of live oaks. Further adding to the area is a recreation of the historic Tavares Pavilion, an overwater, 2-story community gathering place; an ideal venue for weddings and other special conferences and events.

#### Services Provided:

- Electrical Engineering
- Client Interface
- Multi-discipline Coordination



### 25. FIRMS FROM SECTION C INVOLVED WITH THIS PROJECT

a.	(1) FIRM NAME Bailey Engineering Consultants, Inc.	(2) FIRM LOCATION <i>(City and State)</i> Cooper City, FL	(3) ROLE Electrical Engineering
----	---	--	------------------------------------



## H. ADDITIONAL INFORMATION

30. PROVIDE ANY ADDITIONAL INFORMATION REQUESTED BY THE AGENCY. ATTACH ADDITIONAL SHEETS AS NEEDED.

BEC is a multi-disciplined consulting engineering firm specializing in electrical, instrumentation and SCADA system designs for Water and Wastewater projects. We provide consulting engineering services to the public and private sectors with preferential services for municipal and governmental clients.

Incorporated in 1992, we are a second generation consulting engineering firm with an office in Cooper City, Florida. Our water treatment plant design experience is diverse and includes electrical and control system designs for Ion Exchange Systems, Membrane Filtration, Reverse Osmosis Treatment, Ultra Filtration and Lime Softening. Our wastewater treatment plant design experience includes Chlorine, Ozone and Ultra-Violet Disinfection, Aerobic and Anaerobic Digestion, Membrane Bioreactors, Biosolids Treatment, Activated Sludge, Biological Processes and Nutrient Removal.

Our electrical distribution system experience covers from low voltage applications up to medium voltage 13 KV distribution system designs. We currently implement smart designs on our projects and utilize data highways as a means to communicate to motor starters, variable frequency drives and motor monitoring equipment. We integrate our data highway systems seamlessly and reliably into plant control system insuring the end user of a fully redundant powerful power communication architecture.

Our instrumentation systems design experience includes SCADA and PC based systems. This experience encompasses computer/PLC controlled systems utilizing SCADA based systems for interfacing to remote locations, as well as hard wired relay controlled custom solutions.

Our staffing for this work includes professional electrical engineers, designers and CADD technicians. We are committed to responding quickly to the City's needs as they arise.

## I. AUTHORIZED REPRESENTATIVE

The foregoing is a statement of facts.

31. SIGNATURE




32. DATE

July 20, 2018

33. NAME AND TITLE

Stephen E. Bailey, P.E.

<b>ARCHITECT-ENGINEER QUALIFICATIONS</b>				1. SOLICITATION NUMBER (If any) PSEN-18-02		
<b>PART II - GENERAL QUALIFICATIONS</b>						
(If a firm has branch offices, complete for each specific branch office seeking work.)						
2a. FIRM (OR BRANCH OFFICE) NAME Bailey Engineering Consultants, Inc.				3. YEAR ESTABLISHED 1992	4. DUNS NUMBER	
2b. STREET 10620 Griffin Road, Suite 202				<b>5. OWNERSHIP</b>		
2c. CITY Cooper City		2d. STATE FL	2e. ZIP 33328	a. TYPE S-Corporation		
6a. POINT OF CONTACT NAME AND TITLE Stephen E. Bailey, P.E. / President				b. SMALL BUSINESS STATUS		
6b. TELEPHONE NUMBER 954-448-7930		6c. E-MAIL ADDRESS sbailey@baileyengineering.com		7. NAME OF FIRM (If block 2a is a branch office)		
8a. FORMER FIRM NAME(S)				8b. YR. ESTABLISHED	8c. DUNS NUMBER	
n/a						
<b>9. EMPLOYEES BY DISCIPLINE</b>				<b>10. PROFILE OF FIRM'S EXPERIENCE AND ANNUAL AVERAGE REVENUE FOR LAST 5 YEARS</b>		
a. Function Code	b. Discipline	c. No. of Employees		a. Profile Code	b. Experience	c. Revenue Index number (see below)
		(1) FIRM	(2) BRANCH			
02	Administrative	2		C11	Community Facilities	1
08	CADD Technician	2		F03	Fire Protection	1
21	Electrical Engineer	2		H07	Highways; Streets; Airfield Paving; Parking Lots	1
16	Construction Manager	1		L06	Lighting (Exteriors; Streets; Memorials; Athletic Fields, Etc.)	2
				P12	Power Generation, Transmission, Distribution	3
				W03	Water Supply, Treatment and Distribution	3
Total		7				
11. ANNUAL AVERAGE PROFESSIONAL SERVICES REVENUES OF FIRM FOR LAST 3 YEARS (Insert revenue index number shown at right)		PROFESSIONAL SERVICES REVENUE INDEX NUMBER				
a. Federal Work		1		1. Less than \$100,000.		
b. Non-Federal Work		4		2. \$100,000 to less than \$250,000		
c. Total		4		3. \$250,000 to less than \$500,000		
				4. \$500,000 to less than \$1 million		
				5. \$1 million to less than \$2 million		
				6. \$2 million to less than \$5 million		
				7. \$5 million to less than \$10 million		
				8. \$10 million to less than \$25 million		
				9. \$25 million to less than \$50 million		
				10. \$50 million or greater		
<b>12. AUTHORIZED REPRESENTATIVE</b>						
The foregoing is a statement of facts.						
a. SIGNATURE 				b. DATE July 20, 2018		
c. NAME AND TITLE Stephen E. Bailey, P.E., President						





## REFERENCES

### **Palm Coast WWTP No. 2**

*Palm Coast, Florida*

Contact:  
Pat Henderson  
City of Palm Coast  
Phone: 386-986-2346  
Email: phenderson@palmcoastgov.com  
Project Cost: 1.5M

### **Daytona Beach Regional WWTP**

*Daytona Beach, Florida*

Contact:  
Chris Wall  
City of Daytona Beach  
Phone: 386-671-8810  
Email: WallChris@CODB.US  
Project Cost: 450K

### **Altamonte Springs Phase I Improvements**

*Altamonte Springs, Florida*

Contact:  
Chris Rader  
City of Altamonte Springs  
Phone: 407- 571-8335  
Email: CRader@altamonte.org  
Project Cost: 350K

### **Sanford North WRF**

*Sanford, Florida*

Contact:  
Richie Casella  
City of Sanford  
Phone: 407-688-5095  
Email: RICHARD.CASELLA@Sanfordfl.gov  
Project Cost: 450K

**North Port West Villages WRF**

*North Port, Florida*

Contact:

Michael Acosta

City of North Port

Phone: 941-240-8013

Email: [macosta@cityofnorthport.com](mailto:macosta@cityofnorthport.com)

Project Cost: 1.2M

## TAB 4 – OTHER COMPLETED DOCUMENTS

Form **W-9**  
(Rev. November 2017)  
Department of the Treasury  
Internal Revenue Service

## Request for Taxpayer Identification Number and Certification

► Go to [www.irs.gov/FormW9](http://www.irs.gov/FormW9) for instructions and the latest information.

**Give Form to the requester. Do not send to the IRS.**

Print or type.  
See Specific Instructions on page 3.

<b>1</b> Name (as shown on your income tax return). Name is required on this line; do not leave this line blank. <div style="border: 1px solid black; padding: 2px; margin-top: 5px;">Bailey Engineering Consultants, Inc.</div>	
<b>2</b> Business name/disregarded entity name, if different from above	
<b>3</b> Check appropriate box for federal tax classification of the person whose name is entered on line 1. Check only <b>one</b> of the following seven boxes. <div style="margin-top: 10px;"> <input type="checkbox"/> Individual/sole proprietor or single-member LLC           <input type="checkbox"/> C Corporation           <input checked="" type="checkbox"/> S Corporation           <input type="checkbox"/> Partnership           <input type="checkbox"/> Trust/estate         </div> <div style="margin-top: 10px;"> <input type="checkbox"/> Limited liability company. Enter the tax classification (C=C corporation, S=S corporation, P=Partnership) ► _____         </div> <p><b>Note:</b> Check the appropriate box in the line above for the tax classification of the single-member owner. Do not check LLC if the LLC is classified as a single-member LLC that is disregarded from the owner unless the owner of the LLC is another LLC that is <b>not</b> disregarded from the owner for U.S. federal tax purposes. Otherwise, a single-member LLC that is disregarded from the owner should check the appropriate box for the tax classification of its owner.</p> <div style="margin-top: 10px;"> <input type="checkbox"/> Other (see instructions) ► _____         </div>	<b>4</b> Exemptions (codes apply only to certain entities, not individuals; see instructions on page 3): <div style="margin-top: 10px;">Exempt payee code (if any) _____</div> <div style="margin-top: 10px;">Exemption from FATCA reporting code (if any) _____</div> <div style="margin-top: 10px; font-size: small;">(Applies to accounts maintained outside the U.S.)</div>
<b>5</b> Address (number, street, and apt. or suite no.) See instructions. <div style="border: 1px solid black; padding: 2px; margin-top: 5px;">10620 Griffin Road, Suite 202</div>	<b>Requester's name and address (optional)</b>
<b>6</b> City, state, and ZIP code <div style="border: 1px solid black; padding: 2px; margin-top: 5px;">Cooper City, FL 33328</div>	
<b>7</b> List account number(s) here (optional)	

### Part I Taxpayer Identification Number (TIN)

Enter your TIN in the appropriate box. The TIN provided must match the name given on line 1 to avoid backup withholding. For individuals, this is generally your social security number (SSN). However, for a resident alien, sole proprietor, or disregarded entity, see the instructions for Part I, later. For other entities, it is your employer identification number (EIN). If you do not have a number, see *How to get a TIN*, later.

**Note:** If the account is in more than one name, see the instructions for line 1. Also see *What Name and Number To Give the Requester* for guidelines on whose number to enter.

<b>Social security number</b>									
-				-					
<b>or</b>									
<b>Employer identification number</b>									
6	5	-	0	3	2	2	7	1	6

### Part II Certification

Under penalties of perjury, I certify that:

1. The number shown on this form is my correct taxpayer identification number (or I am waiting for a number to be issued to me); and
2. I am not subject to backup withholding because: (a) I am exempt from backup withholding, or (b) I have not been notified by the Internal Revenue Service (IRS) that I am subject to backup withholding as a result of a failure to report all interest or dividends, or (c) the IRS has notified me that I am no longer subject to backup withholding; and
3. I am a U.S. citizen or other U.S. person (defined below); and
4. The FATCA code(s) entered on this form (if any) indicating that I am exempt from FATCA reporting is correct.

**Certification instructions.** You must cross out item 2 above if you have been notified by the IRS that you are currently subject to backup withholding because you have failed to report all interest and dividends on your tax return. For real estate transactions, item 2 does not apply. For mortgage interest paid, acquisition or abandonment of secured property, cancellation of debt, contributions to an individual retirement arrangement (IRA), and generally, payments other than interest and dividends, you are not required to sign the certification, but you must provide your correct TIN. See the instructions for Part II, later.

<b>Sign Here</b>	Signature of U.S. person ►	Date ► July 18, 2018
------------------	----------------------------	----------------------

## General Instructions

Section references are to the Internal Revenue Code unless otherwise noted.

**Future developments.** For the latest information about developments related to Form W-9 and its instructions, such as legislation enacted after they were published, go to [www.irs.gov/FormW9](http://www.irs.gov/FormW9).

## Purpose of Form

An individual or entity (Form W-9 requester) who is required to file an information return with the IRS must obtain your correct taxpayer identification number (TIN) which may be your social security number (SSN), individual taxpayer identification number (ITIN), adoption taxpayer identification number (ATIN), or employer identification number (EIN), to report on an information return the amount paid to you, or other amount reportable on an information return. Examples of information returns include, but are not limited to, the following.

- Form 1099-DIV (dividends, including those from stocks or mutual funds)

- Form 1099-DIV (dividends, including those from stocks or mutual funds)
- Form 1099-MISC (various types of income, prizes, awards, or gross proceeds)
- Form 1099-B (stock or mutual fund sales and certain other transactions by brokers)
- Form 1099-S (proceeds from real estate transactions)
- Form 1099-K (merchant card and third party network transactions)
- Form 1098 (home mortgage interest), 1098-E (student loan interest), 1098-T (tuition)
- Form 1099-C (canceled debt)
- Form 1099-A (acquisition or abandonment of secured property)

Use Form W-9 only if you are a U.S. person (including a resident alien), to provide your correct TIN.

*If you do not return Form W-9 to the requester with a TIN, you might be subject to backup withholding. See What is backup withholding, later.*



City of Pembroke Pines

Attachment C

**NON-COLLUSIVE AFFIDAVIT**

BIDDER is the ,  
(Owner, Partner, Officer, Representative or Agent)

BIDDER is fully informed respecting the preparation and contents of the attached Bid and of all pertinent circumstances respecting such Bid;

Such Bid is genuine and is not a collusive or sham Bid;

Neither the said BIDDER nor any of its officers, partners, owners, agents, representative, employees or parties in interest, including this affidavit, have in any way colluded, conspired, connived or agreed, directly or indirectly, with any other BIDDER, firm or person to submit a collusive or sham Bid in connection with the Contract for which the attached Bid has been submitted; or to refrain from bidding in connection with such Contract; or have in any manner, directly or indirectly, sought by agreement or collusion, or communications, or conference with any BIDDER, firm, or person to fix the price or prices in the attached Bid or any other BIDDER, or to fix any overhead, profit, or cost element of the Bid Price or the Bid Price of any other BIDDER, or to secure through any collusion conspiracy, connivance, or unlawful agreement any advantage against (Recipient), or any person interested in the proposed Contract;

The price of items quoted in the attached Bid are fair and proper and are not tainted by collusion, conspiracy, connivance, or unlawful agreement on the part of the BIDDER or any other of its agents, representatives, owners, employees or parties in interest, including this affidavit.

Printed Name/Signature

Title

Name of Company



City of Pembroke Pines

Attachment D

**SWORN STATEMENT  
ON PUBLIC ENTITY CRIMES  
UNDER FLORIDA STATUTES CHAPTER 287.133(3)(a).**

1. This sworn statement is submitted by Bailey Engineering Consultants, Inc. (name of entity submitting sworn statement) whose business address is 10620 Griffin Rd, #202, Cooper City, FL and (if applicable) its Federal Employer Identification Number (FEIN) is 65-0322716. (If the entity has no FEIN, include the Social Security Number of the individual signing this sworn statement:                                 .)
  
2. My name is Stephen E. Bailey, P.E. and my  
(Please print name of individual signing)  
  
relationship to the entity named above is President/Owner.
  
3. I understand that a "public entity crime" as defined in Paragraph 287.133(1)(g), Florida Statutes, means a violation of any state or federal law by a person with respect to and directly related to the transaction of business with any public entity or with an agency or political subdivision of any other state or with the United States, including, but not limited to, any bid, proposal, reply, or contract for goods or services, any lease for real property, or any contract for the construction or repair of a public building or public work, involving antitrust, fraud, theft, bribery, collusion, racketeering, conspiracy, or material misrepresentation.
  
4. I understand that a "convicted" or "conviction" as defined in Paragraph 287.133(1)(b), Florida Statutes, means a finding of guilt or a conviction of a public entity crime, with or without an adjudication of guilt, in any federal or state trial court of record relating to charges brought by indictment or information after July 1, 1989, as a result of a jury verdict, nonjury trial, or entry of a plea of guilty or nolo contendere.
  
5. I understand that an "affiliate" as defined in Paragraph 287.133(1)(a), Florida Statutes, means:
  1. A predecessor or successor of a person convicted of a public entity crime: or
  2. An entity under the control of any natural person who is active in the management of the entity and who has been convicted of a public entity crime. The term "affiliate" includes those officers, directors, executives, partners, shareholders, employees, members, and agents who are active in the management of an affiliate. The Cityship by one person of shares constituting a controlling interest in another person, or a pooling of equipment or income among persons when not for fair market value under an arm's length agreement, shall be a prima facie case that one person controls another person. A person who knowingly enters into a joint venture with a person who has been convicted of a public entity crime in Florida during the preceding 36 months shall be considered an affiliate.

6. I understand that a "person" as defined in Paragraph 287.133(1)(e), Florida Statutes, means any natural person or any entity organized under the laws of any state or of the United States with the legal power to enter into a binding contract and which bids or applies to bid on contracts let by a public entity, or which otherwise transacts or applies to transact business with a public entity, or which otherwise transacts or applies to transact business with a public entity. The term "person" includes those officers, directors, executives, partners, shareholders, employees, members, and agents who are active in management of an entity.
7. Based on information and belief, the statement which I have marked below is true in relation to the entity submitting this sworn statement. **(Please indicate which statement applies.)**

☒ A) Neither the entity submitting this sworn statement, nor any officers, directors, executives, partners, shareholders, employees, members, or agents who are active in management of the entity, nor any affiliate of the entity have been charged with and convicted of a public entity crime subsequent to July 1, 1989.

☐ B) The entity submitting this sworn statement, or one or more of the officers, directors, executives, partners, shareholders, employees, members, or agents who are active in management of the entity, or an affiliate of the entity has been charged with and convicted of a public entity crime subsequent to July 1, 1989, AND **(Please indicate which additional statement applies.)**

☐ B1) There has been a proceeding concerning the conviction before a hearing officer of the State of Florida, Division of Administrative Hearings. The final order entered by the hearing officer did not place the person or affiliate on the convicted vendor list. **(Please attach a copy of the final order.)**

☐ B2) The person or affiliate was placed on the convicted vendor list. There has been a subsequent proceeding before a hearing officer of the State of Florida, Division of Administrative Hearings. The final order entered by the hearing officer determined that it was in the public interest to remove the person or affiliate from the convicted vendor list. **(Please attach a copy of the final order.)**

☐ B3) The person or affiliate has not been placed on the convicted vendor list. **(Please describe any action taken by or pending with the Department of General Services.)**

Stephen E. Bailey  
Bidder's Name/Signature

Bailey Engineering Consultants, Inc.  
Company

July 18, 2018  
Date

**CONTACT INFORMATION FORM**

IN ACCORDANCE WITH “RFQ # PSEN-18-02” titled “**Professional Service Providers (Architectural, Engineering, Surveying & Mapping)**” attached hereto as a part hereof, the undersigned submits the following:

**A) Contact Information**

The Contact information form shall be electronically signed by one duly authorized to do so, and in case signed by a deputy or subordinate, the principal's properly written authority to such deputy or subordinate must accompany the proposal. This form must be completed and submitted through [www.bidsync.com](http://www.bidsync.com) as part of the bidder's submittal.

**COMPANY INFORMATION:**

COMPANY:

STREET ADDRESS:

CITY, STATE & ZIP CODE:

**PRIMARY CONTACT FOR THE PROJECT:**

NAME:  TITLE:

E-MAIL:

TELEPHONE:  FAX:

**CORPORATE OFFICER AUTHORIZED APPROVER:**

NAME:  TITLE:

E-MAIL:

TELEPHONE:  FAX:

SIGNATURE:



**PROFESSIONAL SERVICES FORM**

*Please check the boxes shown below that your company wants to be considered for:*

<input type="checkbox"/>	<b>General Civil and Environmental Engineering Services</b>
<input type="checkbox"/>	<b>Treatment Plant Process Engineering Services</b>
<input checked="" type="checkbox"/>	<b>Electrical Engineering Services</b>
<input type="checkbox"/>	<b>Geotechnical Services</b>
<input type="checkbox"/>	<b>Structural Engineering Services</b>
<input type="checkbox"/>	<b>Land Surveying Services</b>
<input type="checkbox"/>	<b>General Architectural Services</b>
<input type="checkbox"/>	<b>Landscape Architecture Services</b>
<input type="checkbox"/>	<b>Hydro-Geological Services</b>
<input type="checkbox"/>	<b>FDOT Roadway Engineering Services</b>



## **EQUAL BENEFITS CERTIFICATION FORM FOR DOMESTIC PARTNERS AND ALL MARRIED COUPLES**

Except where federal or state law mandates to the contrary, a Contractor awarded a Contract pursuant to a competitive solicitation shall provide benefits to Domestic Partners and spouses of its employees, irrespective of gender, on the same basis as it provides benefits to employees' spouses in traditional marriages.

The Contractor shall provide the City and/or the City Manager or his/her designee, access to its records for the purpose of audits and/or investigations to ascertain compliance with the provisions of this section, and upon request shall provide evidence that the Contractor is in compliance with the provisions of this section upon each new bid, contract renewal, or when the City Manager has received a complaint or has reason to believe the Contractor may not be in compliance with the provisions of this section. Records shall include but not be limited to providing the City and/or the City Manager or his/her designee with certified copies of the Contractor's records pertaining to its benefits policies and its employment policies and practices.

The Contractor must conspicuously make available to all employees and applicants for employment the following statement:

**“During the performance of a contract with the City of Pembroke Pines, Florida, the Contractor will provide Equal Benefits to its employees with spouses, as defined by Section 35.39 of the City's Code of Ordinances, and its employees with Domestic Partners and all Married Couples”.**

The posted statement must also include a City contact telephone number and email address which will be provided to each contractor when a covered contract is executed.

### **SECTION 1 DEFINITIONS**

1. **Benefits** means the following plan, program or policy provided or offered by a contractor to its employees as part of the employer's total compensation package which may include but is not limited to sick leave, bereavement leave, family medical leave, and health benefits.
2. **Cash Equivalent** mean the amount of money paid to an employee with a domestic partner or spouse in lieu of providing benefits to the employee's domestic partner or spouse. The cash equivalent is equal to the employer's direct expense of providing benefits to an employee for his or her spouse from a traditional marriage.
3. **Covered Contract** means a contract between the City and a contractor awarded subsequent to the date when this section becomes effective valued at over \$25,000 or the threshold amount required for competitive bids as required in section 35.18(A) of the Procurement Code.
4. **Domestic Partner** shall mean any two (2) adults of the same or different sex who have registered as domestic partners with a governmental body pursuant to state or local law authorizing such registration, or with an internal registry maintained by the employer of at least one of the domestic partners. A contractor may institute an internal registry to allow for the provision of equal benefits to employees with domestic partners who do not register their partnerships pursuant to a governmental body authorizing such registration, or who are located in a jurisdiction where no such governmental domestic partnership registry exists. A

contractor that institutes such registry shall not impose criteria for registration that are more stringent than those required for domestic partnership registration by the City of Pembroke Pines.

5. **Equal benefits** means the equality of benefits between employees with spouses and/or dependents of spouses and employees with domestic partners and/or dependents of domestic partners, and/or between spouses of employees and/or dependents of spouses and domestic partners of employees and/or dependents of domestic partners.
6. **Spouse** means one member of a married pair legally married under the laws of any state within the United States of America or any other jurisdiction under which such marriage is legally recognized, irrespective of gender.
7. **Traditional marriage** means a marriage between one man and one woman.

## SECTION 2 CERTIFICATION OF CONTRACTOR

The firm providing a response, by virtue of the signature below, certifies that it is aware of the requirements of Section 35.39 "City Contractors providing Equal Benefits for Domestic Partners and all Married Couples" of the City's Code of Ordinances, and certifies the following (**Check only one box below**):

- ☒ **A.** Contractor currently complies with the requirements of this section; or
- ☐ **B.** Contractor will comply with the conditions of this section at the time of contract award; or
- ☐ **C.** Contractor will not comply with the conditions of this section at the time of contract award:  
or
- ☐ **D.** Contractor does not comply with the conditions of this section because of the following allowable exemption (**Check only one box below**):
- ☐ 1. The Contractor does not provide benefits to employees' spouses in traditional marriages;
- ☐ 2. The Contractor provides an employee the cash equivalent of benefits because the Contractor is unable to provide benefits to employees' Domestic Partners or spouses despite making reasonable efforts to provide them. To meet this exception, the Contractor shall provide a notarized affidavit that it has made reasonable efforts to provide such benefits. The affidavit shall state the efforts taken to provide such benefits and the amount of the cash equivalent. Cash equivalent means the amount of money paid to an employee with a Domestic Partner or spouse rather than providing benefits to the employee's Domestic Partner or spouse. The cash equivalent is equal to the employer's direct expense of providing benefits to an employee's spouse;
- ☐ 3. The Contractor is a religious organization, association, society, or any non-profit charitable or educational institution or organization operated supervised or controlled by or in conjunction with a religious organization, association, or society;
- ☐ 4. The Contractor is a governmental agency;

**The certification shall be signed by an authorized officer of the Contractor. Failure to provide such certification (by checking the appropriate boxes above along with completing the information below) shall result in a Contractor being deemed non-responsive.**

COMPANY NAME:

AUTHORIZED OFFICER NAME / SIGNATURE:

**VENDOR DRUG-FREE WORKPLACE CERTIFICATION FORM****SECTION 1 GENERAL TERM**

Preference may be given to vendors submitting a certification with their bid/proposal certifying they have a drug-free workplace in accordance with Section 287.087, Florida Statutes. This requirement affects all public entities of the State and becomes effective January 1, 1991. The special condition is as follows:

**IDENTICAL TIE BIDS** - Preference may be given to businesses with drug-free workplace programs. Whenever two or more bids that are equal with respect to price, quality, and service are received by the State or by any political subdivision for the procurement of commodities or contractual services, a bid received from a business that certifies that it has implemented a drugfree workplace program shall be given preference in the award process. Established procedures for processing tie bids will be followed if none of the tied vendors have a drug-free workplace program. In order to have a drug-free workplace program, a business shall:

1. Publish a statement notifying employees that the unlawful manufacture, distribution, dispensing, possession, or use of a controlled substance is prohibited in the workplace and specifying the actions that will be taken against employees for violations of such prohibition.
2. Inform employees about the dangers of drug abuse in the workplace, the business's policy of maintaining a drug-free workplace, any available drug counseling, rehabilitation, and employee assistance programs, and the penalties that may be imposed upon employees for drug abuse violations.
3. Give each employee engaged in providing the commodities or contractual services that are under bid a copy of the statement specified in subsection (1).
4. In the statement specified in subsection (1), notify the employees that, as a condition of working on the commodities or contractual services that are under bid, the employee will abide by the terms of the statement and will notify the employer of any conviction of, or plea of guilty or nolo contendere to, any violation of chapter 893 or of any controlled substance law of the United States or any state, for a violation occurring in the workplace no later than five (5) days after each conviction.
5. Impose a sanction on, or require the satisfactory participation in a drug abuse assistance or rehabilitation program if such is available in the employee's community, by any employee who is so convicted.
6. Make a good faith effort to continue to maintain a drug-free workplace through implementation of this section.

**SECTION 2 AFFIRMATION**

☒ Place a check mark here only if affirming bidder **complies fully** with the above requirements for a Drug-Free Workplace.

☐ Place a check mark here only if affirming bidder **does not** meet the requirements for a Drug-Free Workplace.

**Failure to complete this certification at this time (by checking either of the boxes above) shall render the vendor ineligible for Drug-Free Workplace Preference. This form must be completed by/for the proposer; the proposer WILL NOT qualify for Drug-Free Workplace Preference based on their sub-contractors' qualifications.**

  
Authorized Signature

\_\_\_\_\_  
Stephen E. Bailey, P.E.  
Authorized Signer Name

\_\_\_\_\_  
Bailey Engineering  
Consultants, Inc.  
Company Name



### **PROPOSER'S QUALIFICATIONS STATEMENT**

PROPOSER shall furnish the following information. Failure to comply with this requirement will render Bid non-responsive and shall cause its rejection. Additional sheets shall be attached as required.

PROPOSER'S Name and Principal Address:

Bailey Engineering Consultants, Inc.

10620 Griffin Road, Suite 202

Cooper City, FL 33328

Contact Person's Name and Title: Stephen E. Bailey, P.E., President

Contact Person's E-mail Address: sbailey@baileyengineering.com

PROPOSER'S Telephone and Fax Number: 954-448-7930 / 954-713-9959

PROPOSER'S License Number: 42461

**(Please attach certificate of status, competency, and/or state registration.)**

PROPOSER'S Federal Identification Number: 65-0322716

Number of years your organization has been in business 26

State the number of years your firm has been in business under your present business name 26

State the number of years your firm has been in business in the work specific to this solicitation:  
26

Names and titles of all officers, partners or individuals doing business under trade name:

Stephen E. Bailey, P.E., President

The business is a:      Sole Proprietorship ☐      Partnership ☐      Corporation ☒

IF USING A FICTITIOUS NAME, SUBMIT EVIDENCE OF COMPLIANCE WITH FLORIDA FICTITIOUS NAME STATUTE. (ATTACH IN PROPOSER EXHIBIT SECTION)



Under what former name has your business operated? Include a description of the business. Failure to include such information shall be deemed to be intentional misrepresentation by the City and shall render the proposer RFP submittals non-responsive.

N/A

At what address was that business located?

N/A

Name, address, and telephone number of surety company and agent who will provide the required bonds on this contract:

N/A

Have you ever failed to complete work awarded to you. If so, when, where and why?

BEC has not failed to complete work awarded.

Have you personally inspected the proposed WORK and do you have a complete plan for its performance?

The BEC team is aware of the type of work to be completed and will ensure that each task will receive full dedication and necessary time.



Will you subcontract any part of this WORK? If so, give details including a list of each subcontractor(s) that will perform work in excess of ten percent (10%) of the contract amount and the work that will be performed by each subcontractor(s).

BEC will not subcontract any of this work.

The foregoing list of subcontractor(s) may not be amended after award of the contract without the prior written approval of the Contract Administrator, whose approval shall not be reasonably withheld.

List and describe all bankruptcy petitions (voluntary or involuntary) which have been filed by or against the Proposer, its parent or subsidiaries or predecessor organizations during the past five (5) years. Include in the description the disposition of each such petition.

N/A

List and describe all successful Bond claims made to your surety (ies) during the last five (5) years. The list and descriptions should include claims against the bond of the Proposer and its predecessor organization(s).

N/A

List all claims, arbitrations, administrative hearings and lawsuits brought by or against the Proposer or its predecessor organizations(s) during the last (10) years. The list shall include all case names; case, arbitration or hearing identification numbers; the name of the project over which the dispute arose; and a description of the subject matter of the dispute.

N/A



List and describe all criminal proceedings or hearings concerning business related offenses in which the Proposer, its principals or officers or predecessor organization(s) were defendants.

N/A

Has the Proposer, its principals, officers or predecessor organization(s) been CONVICTED OF A Public Entity Crime, debarred or suspended from bidding by any government entity? If so, provide details.

No.

Are you an ☒ Original provider ☐ sales representative ☐ distributor, ☐ broker, ☐ manufacturer ☐ other, of the commodities/services proposed upon? If other than the original provider, explain below.

Have you ever been debarred or suspended from doing business with any governmental agency? If yes, please explain:

No.





Describe the firm's local experience/nature of service with contracts of similar size and complexity, in the previous three (3) years:

Bailey Engineering Consultants, Inc. provides consulting engineering services to the public and private sectors with preferential services for municipal and governmental clients.

We've recently provided electrical engineering services for the City of Pembroke Pines, and in the last 3 years have provided similar services as those requested to the following local municipalities: Town of Davie, City of Miramar, City of Margate and Broward County.

The PROPOSER acknowledges and understands that the information contained in response to this Qualification Statement shall be relied upon by CITY in awarding the contract and such information is warranted by PROPOSER to be true. The discovery of any omission or misstatement that materially affects the PROPOSER'S qualifications to perform under the contract shall cause the CITY to reject the Bid, and if after the award, to cancel and terminate the award and/or contract.

Bailey Engineering Consultants, Inc.  
(Company Name)

Stephen E. Bailey, P.E.  
(Printed Name/Signature)



**SCRUTINIZED COMPANY CERTIFICATION  
PURSUANT TO FLORIDA STATUTE § 287.135.**

I, Stephen E. Bailey, P.E., President, on behalf of Bailey Engineering Consultants, Inc.,  
Print Name and Title Company Name

certify that Bailey Engineering Consultants, Inc.:  
Company Name

1. Does not participate in a boycott of Israel; and
2. Is not on the Scrutinized Companies that Boycott Israel list; and
3. Is not on the Scrutinized Companies with Activities in Sudan List; and
4. Is not on the Scrutinized Companies with Activities in the Iran Petroleum Energy Sector List; and
5. Has not engaged in business operations in Syria.

Submitting a false certification shall be deemed a material breach of contract. The City shall provide notice, in writing, to the Contractor of the City's determination concerning the false certification. The Contractor shall have ninety (90) days following receipt of the notice to respond in writing and demonstrate that the determination of false certification was made in error. If the Contractor does not demonstrate that the City's determination of false certification was made in error then the City shall have the right to terminate the contract and seek civil remedies pursuant to Florida Statute § 287.135.

Section 287.135, Florida Statutes, prohibits the City from: 1) Contracting with companies for goods or services in any amount if at the time of bidding on, submitting a proposal for, or entering into or renewing a contract if the company is on the Scrutinized Companies that Boycott Israel List, created pursuant to Section 215.4725, F.S. or is engaged in a boycott of Israel; and 2) Contracting with companies, for goods or services over \$1,000,000.00 that are on either the Scrutinized Companies with activities in the Iran Petroleum Energy Sector list, created pursuant to s. 215.473, or are engaged in business operations in Syria.

As the person authorized to sign on behalf of the Contractor, I hereby certify that the company identified above in the section entitled "Contractor Name" does not participate in any boycott of Israel, is not listed on the Scrutinized Companies that Boycott Israel List, is not listed on either the Scrutinized Companies with activities in the Iran Petroleum Energy Sector List, and is not engaged in business operations in Syria. I understand that pursuant to section 287.135, Florida Statutes, the submission of a false certification may subject the company to civil penalties, attorney's fees, and/or costs. I further understand that any contract with the City for goods or services may be terminated at the option of the City if the company is found to have submitted a false certification or has been placed on the Scrutinized Companies with Activities in Sudan list or the Scrutinized Companies with Activities in the Iran Petroleum Energy Sector List.

Stephen E. Bailey, P.E.

Bailey Engineering Consultants, Inc.  
Company Name

Stephen E. Bailey  
Print Name / Signature

President  
Title

## TAB 5 – PROFESSIONAL REGISTRATION CERTIFICATES



## PROFESSIONAL LICENSES

# State of Florida

## Board of Professional Engineers

Attests that

**Bailey Engineering Consultants, Inc.**



Is authorized under the provisions of Section 471.023, Florida Statutes, to offer engineering services to the public through a Professional Engineer, duly licensed under Chapter 471, Florida Statutes.

Expiration: 2/28/2019

Audit No: 228201904729 R

CA Lic. No:

**6783**

# State of Florida

## Board of Professional Engineers

Attests that

**Stephen Edward Bailey, P.E.**



Is licensed as a Professional Engineer under Chapter 471, Florida Statutes

Expiration: 2/28/2019

Audit No: 228201928199 R

P.E. Lic. No:

**42461**

# *State of Florida*

## *Department of State*

I certify from the records of this office that BAILEY ENGINEERING CONSULTANTS, INC. is a corporation organized under the laws of the State of Florida, filed on March 6, 1992.

The document number of this corporation is V19696.

I further certify that said corporation has paid all fees due this office through December 31, 2018, that its most recent annual report/uniform business report was filed on January 12, 2018, and that its status is active.

I further certify that said corporation has not filed Articles of Dissolution.

*Given under my hand and the  
Great Seal of the State of Florida  
at Tallahassee, the Capital, this  
the Twelfth day of January, 2018*



*Ken DeFoner*  
**Secretary of State**

Tracking Number: CC8646015987

To authenticate this certificate, visit the following site, enter this number, and then follow the instructions displayed.

<https://services.sunbiz.org/Filings/CertificateOfStatus/CertificateAuthentication>



Supplier: **Bailey Engineering Consultants, Inc.**



City of Pembroke Pines

Attachment C

**NON-COLLUSIVE AFFIDAVIT**

BIDDER is the **Owner**,

(Owner, Partner, Officer, Representative or Agent)

BIDDER is fully informed respecting the preparation and contents of the attached Bid and of all pertinent circumstances respecting such Bid;

Such Bid is genuine and is not a collusive or sham Bid;

Neither the said BIDDER nor any of its officers, partners, owners, agents, representative, employees or parties in interest, including this affidavit, have in any way colluded, conspired, connived or agreed, directly or indirectly, with any other BIDDER, firm or person to submit a collusive or sham Bid in connection with the Contract for which the attached Bid has been submitted; or to refrain from bidding in connection with such Contract; or have in any manner, directly or indirectly, sought by agreement or collusion, or communications, or conference with any BIDDER, firm, or person to fix the price or prices in the attached Bid or any other BIDDER, or to fix any overhead, profit, or cost element of the Bid Price or the Bid Price of any other BIDDER, or to secure through any collusion conspiracy, connivance, or unlawful agreement any advantage against (Recipient), or any person interested in the proposed Contract;

The price of items quoted in the attached Bid are fair and proper and are not tainted by collusion, conspiracy, connivance, or unlawful agreement on the part of the BIDDER or any other of its agents, representatives, owners, employees or parties in interest, including this affidavit.

Printed Name/Signature **Stephen E. Bailey, P.E.**

Title **President**

Name of Company **Bailey Engineering Consultants, Inc.**

Supplier: **Bailey Engineering Consultants, Inc.**



City of Pembroke Pines

Attachment D

**SWORN STATEMENT  
ON PUBLIC ENTITY CRIMES  
UNDER FLORIDA STATUTES CHAPTER 287.133(3)(a).**

1. This sworn statement is submitted **by Bailey Engineering Consultants, Inc.** (name of entity submitting sworn statement) whose business address is **10620 Griffin Road, #202, Cooper City, FL** and (if applicable) its Federal Employer Identification Number (FEIN) is **65-0322716**. (If the entity has no FEIN, include the Social Security Number of the individual signing this sworn statement: .)
2. My name is **Stephen E. Bailey, P.E.** and my  
(Please print name of individual signing)  
  
relationship to the entity named above is **President/Owner**.
3. I understand that a "public entity crime" as defined in Paragraph 287.133(1)(g), Florida Statutes, means a violation of any state or federal law by a person with respect to and directly related to the transaction of business with any public entity or with an agency or political subdivision of any other state or with the United States, including, but not limited to, any bid, proposal, reply, or contract for goods or services, any lease for real property, or any contract for the construction or repair of a public building or public work, involving antitrust, fraud, theft, bribery, collusion, racketeering, conspiracy, or material misrepresentation.
4. I understand that a "convicted" or "conviction" as defined in Paragraph 287.133(1)(b), Florida Statutes, means a finding of guilt or a conviction of a public entity crime, with or without an adjudication of guilt, in any federal or state trial court of record relating to charges brought by indictment or information after July 1, 1989, as a result of a jury verdict, nonjury trial, or entry of a plea of guilty or nolo contendere.
5. I understand that an "affiliate" as defined in Paragraph 287.133(1)(a), Florida Statutes, means:
  1. A predecessor or successor of a person convicted of a public entity crime: or
  2. An entity under the control of any natural person who is active in the management of the entity and who has been convicted of a public entity crime. The term "affiliate" includes those officers, directors, executives, partners, shareholders, employees, members, and agents who are active in the management of an affiliate. The Cityship by one person of shares constituting a controlling interest in another person, or a pooling of equipment or income among persons when not for fair market value under an arm's length agreement, shall be a prima facie case that one person controls another person. A person who knowingly enters into a joint venture with a person who has been convicted of a public entity crime in Florida during the preceding 36 months shall be considered an affiliate.

6. I understand that a "person" as defined in Paragraph 287.133(1)(e), Florida Statutes, means any natural person or any entity organized under the laws of any state or of the United States with the legal power to enter into a binding contract and which bids or applies to bid on contracts let by a public entity, or which otherwise transacts or applies to transact business with a public entity, or which otherwise transacts or applies to transact business with a public entity. The term "person" includes those officers, directors, executives, partners, shareholders, employees, members, and agents who are active in management of an entity.
7. Based on information and belief, the statement which I have marked below is true in relation to the entity submitting this sworn statement. **(Please indicate which statement applies.)**

☒ A) Neither the entity submitting this sworn statement, nor any officers, directors, executives, partners, shareholders, employees, members, or agents who are active in management of the entity, nor any affiliate of the entity have been charged with and convicted of a public entity crime subsequent to July 1, 1989.

☐ B) The entity submitting this sworn statement, or one or more of the officers, directors, executives, partners, shareholders, employees, members, or agents who are active in management of the entity, or an affiliate of the entity has been charged with and convicted of a public entity crime subsequent to July 1, 1989, AND **(Please indicate which additional statement applies.)**

☐ B1) There has been a proceeding concerning the conviction before a hearing officer of the State of Florida, Division of Administrative Hearings. The final order entered by the hearing officer did not place the person or affiliate on the convicted vendor list. **(Please attach a copy of the final order.)**

☐ B2) The person or affiliate was placed on the convicted vendor list. There has been a subsequent proceeding before a hearing officer of the State of Florida, Division of Administrative Hearings. The final order entered by the hearing officer determined that it was in the public interest to remove the person or affiliate from the convicted vendor list. **(Please attach a copy of the final order.)**

☐ B3) The person or affiliate has not been placed on the convicted vendor list. **(Please describe any action taken by or pending with the Department of General Services.)**

**Stephen E. Bailey, P.E.**

**Bailey Engineering  
Consultants**

**07/20/2018**

Bidder's Name/Signature

Company

Date



Supplier: **Bailey Engineering Consultants, Inc.**

**CONTACT INFORMATION FORM**

IN ACCORDANCE WITH “RFQ # PSEN-18-02” titled “**Professional Service Providers (Architectural, Engineering, Surveying & Mapping)**” attached hereto as a part hereof, the undersigned submits the following:

**A) Contact Information**

The Contact information form shall be electronically signed by one duly authorized to do so, and in case signed by a deputy or subordinate, the principal's properly written authority to such deputy or subordinate must accompany the proposal. This form must be completed and submitted through [www.bidsync.com](http://www.bidsync.com) as part of the bidder's submittal.

**COMPANY INFORMATION:**

COMPANY: **Bailey Engineering Consultants, Inc.**

STREET ADDRESS: **10620 Griffin Road, Suite 202**

CITY, STATE & ZIP CODE: **Cooper City, FL 33328**

**PRIMARY CONTACT FOR THE PROJECT:**

NAME: **Stephen E. Bailey, P.E.** TITLE: **President**

E-MAIL: **sbailey@baileyengineering.com**

- TELEPHONE: **954-448-7930** FAX: **954-713-9959**

**CORPORATE OFFICER AUTHORIZED APPROVER:**

NAME: **Stephen E. Bailey, P.E.** TITLE: **President**

E-MAIL: **sbailey@baileyengineering.com**

- TELEPHONE: **954-448-7930** FAX: **954-713-9959**

SIGNATURE: **Stephen E. Bailey, P.E.**

Supplier: **Bailey Engineering Consultants, Inc.**

**PROFESSIONAL SERVICES FORM**

*Please check the boxes shown below that your company wants to be considered for:*

<input type="checkbox"/>	<b>General Civil and Environmental Engineering Services</b>
<input type="checkbox"/>	<b>Treatment Plant Process Engineering Services</b>
<input checked="" type="checkbox"/>	<b>Electrical Engineering Services</b>
<input type="checkbox"/>	<b>Geotechnical Services</b>
<input type="checkbox"/>	<b>Structural Engineering Services</b>
<input type="checkbox"/>	<b>Land Surveying Services</b>
<input type="checkbox"/>	<b>General Architectural Services</b>
<input type="checkbox"/>	<b>Landscape Architecture Services</b>
<input type="checkbox"/>	<b>Hydro-Geological Services</b>
<input type="checkbox"/>	<b>FDOT Roadway Engineering Services</b>

Supplier: **Bailey Engineering Consultants, Inc.**



City of Pembroke Pines

Attachment G

## **EQUAL BENEFITS CERTIFICATION FORM FOR DOMESTIC PARTNERS AND ALL MARRIED COUPLES**

Except where federal or state law mandates to the contrary, a Contractor awarded a Contract pursuant to a competitive solicitation shall provide benefits to Domestic Partners and spouses of its employees, irrespective of gender, on the same basis as it provides benefits to employees' spouses in traditional marriages.

The Contractor shall provide the City and/or the City Manager or his/her designee, access to its records for the purpose of audits and/or investigations to ascertain compliance with the provisions of this section, and upon request shall provide evidence that the Contractor is in compliance with the provisions of this section upon each new bid, contract renewal, or when the City Manager has received a complaint or has reason to believe the Contractor may not be in compliance with the provisions of this section. Records shall include but not be limited to providing the City and/or the City Manager or his/her designee with certified copies of the Contractor's records pertaining to its benefits policies and its employment policies and practices.

The Contractor must conspicuously make available to all employees and applicants for employment the following statement:

**“During the performance of a contract with the City of Pembroke Pines, Florida, the Contractor will provide Equal Benefits to its employees with spouses, as defined by Section 35.39 of the City's Code of Ordinances, and its employees with Domestic Partners and all Married Couples”.**

The posted statement must also include a City contact telephone number and email address which will be provided to each contractor when a covered contract is executed.

### **SECTION 1 DEFINITIONS**

1. **Benefits** means the following plan, program or policy provided or offered by a contractor to its employees as part of the employer's total compensation package which may include but is not limited to sick leave, bereavement leave, family medical leave, and health benefits.
2. **Cash Equivalent** mean the amount of money paid to an employee with a domestic partner or spouse in lieu of providing benefits to the employee's domestic partner or spouse. The cash equivalent is equal to the employer's direct expense of providing benefits to an employee for his or her spouse from a traditional marriage.
3. **Covered Contract** means a contract between the City and a contractor awarded subsequent to the date when this section becomes effective valued at over \$25,000 or the threshold amount required for competitive bids as required in section 35.18(A) of the Procurement Code.
4. **Domestic Partner** shall mean any two (2) adults of the same or different sex who have registered as domestic partners with a governmental body pursuant to state or local law authorizing such registration, or with an internal registry maintained by the employer of at least one of the domestic partners. A contractor may institute an internal registry to allow for the provision of equal benefits to employees with domestic partners who do not register their partnerships pursuant to a governmental body authorizing such registration, or who are

located in a jurisdiction where no such governmental domestic partnership registry exists. A contractor that institutes such registry shall not impose criteria for registration that are more stringent than those required for domestic partnership registration by the City of Pembroke Pines.

5. **Equal benefits** means the equality of benefits between employees with spouses and/or dependents of spouses and employees with domestic partners and/or dependents of domestic partners, and/or between spouses of employees and/or dependents of spouses and domestic partners of employees and/or dependents of domestic partners.
6. **Spouse** means one member of a married pair legally married under the laws of any state within the United States of America or any other jurisdiction under which such marriage is legally recognized, irrespective of gender.
7. **Traditional marriage** means a marriage between one man and one woman.

## SECTION 2 CERTIFICATION OF CONTRACTOR

The firm providing a response, by virtue of the signature below, certifies that it is aware of the requirements of Section 35.39 "City Contractors providing Equal Benefits for Domestic Partners and all Married Couples" of the City's Code of Ordinances, and certifies the following (**Check only one box below**):

- ☒ **A.** Contractor currently complies with the requirements of this section; or
- ☐ **B.** Contractor will comply with the conditions of this section at the time of contract award; or
- ☐ **C.** Contractor will not comply with the conditions of this section at the time of contract award:  
or
- ☐ **D.** Contractor does not comply with the conditions of this section because of the following allowable exemption (**Check only one box below**):
- ☐ **1.** The Contractor does not provide benefits to employees' spouses in traditional marriages;
- ☐ **2.** The Contractor provides an employee the cash equivalent of benefits because the Contractor is unable to provide benefits to employees' Domestic Partners or spouses despite making reasonable efforts to provide them. To meet this exception, the Contractor shall provide a notarized affidavit that it has made reasonable efforts to provide such benefits. The affidavit shall state the efforts taken to provide such benefits and the amount of the cash equivalent. Cash equivalent means the amount of money paid to an employee with a Domestic Partner or spouse rather than providing benefits to the employee's Domestic Partner or spouse. The cash equivalent is equal to the employer's direct expense of providing benefits to an employee's spouse;
- ☐ **3.** The Contractor is a religious organization, association, society, or any non-profit charitable or educational institution or organization operated supervised or controlled by or in conjunction with a religious organization, association, or society;
- ☐ **4.** The Contractor is a governmental agency;

**The certification shall be signed by an authorized officer of the Contractor. Failure to provide such certification (by checking the appropriate boxes above along with completing the information below) shall result in a Contractor being deemed non-responsive.**

COMPANY NAME: **Bailey Engineering Consultants, Inc.**

AUTHORIZED OFFICER NAME / SIGNATURE: **Stephen E. Bailey, P.E.**

**Supplier: Bailey Engineering Consultants, Inc.**



City of Pembroke Pines

Attachment L

**SCRUTINIZED COMPANY CERTIFICATION  
PURSUANT TO FLORIDA STATUTE § 287.135**

I, **Stephen E. Bailey,** on behalf of **Bailey Engineering Consultants, Inc.,**  
 Print Name and Title Company Name

certify that **Bailey Engineering Consultants, Inc.**  
 Company Name

1. Does not participate in a boycott of Israel; and
2. Is not on the Scrutinized Companies that Boycott Israel list; and
3. Is not on the Scrutinized Companies with Activities in Sudan List; and
4. Is not on the Scrutinized Companies with Activities in the Iran Petroleum Energy Sector List; and
5. Has not engaged in business operations in Syria.

Submitting a false certification shall be deemed a material breach of contract. The City shall provide notice, in writing, to the Contractor of the City's determination concerning the false certification. The Contractor shall have ninety (90) days following receipt of the notice to respond in writing and demonstrate that the determination of false certification was made in error. If the Contractor does not demonstrate that the City's determination of false certification was made in error then the City shall have the right to terminate the contract and seek civil remedies pursuant to Florida Statute § 287.135.

Section 287.135, Florida Statutes, prohibits the City from: 1) Contracting with companies for goods or services in any amount if at the time of bidding on, submitting a proposal for, or entering into or renewing a contract if the company is on the Scrutinized Companies that Boycott Israel List, created pursuant to Section 215.4725, F.S. or is engaged in a boycott of Israel; and 2) Contracting with companies, for goods or services over \$1,000,000.00 that are on either the Scrutinized Companies with activities in the Iran Petroleum Energy Sector list, created pursuant to s. 215.473, or are engaged in business operations in Syria.

As the person authorized to sign on behalf of the Contractor, I hereby certify that the company identified above in the section entitled "Contractor Name" does not participate in any boycott of Israel, is not listed on the Scrutinized Companies that Boycott Israel List, is not listed on either the Scrutinized Companies with activities in the Iran Petroleum Energy Sector List, and is not engaged in business operations in Syria. I understand that pursuant to section 287.135, Florida Statutes, the submission of a false certification may subject the company to civil penalties, attorney's fees, and/or costs. I further understand that any contract with the City for goods or services may be terminated at the option of the City if the company is found to have submitted a false certification or has been placed on the Scrutinized Companies with Activities in Sudan list or the Scrutinized Companies with Activities in the Iran Petroleum Energy Sector List.

**Bailey Engineering Consultants, Inc.**  
 Company Name

**Stephen E. Bailey, P.E.**  
 Print Name / Signature

**President**  
 Title

3		4
---	--	---