

**INGEMEL SA LLC**

Bid Contact **PEDRO ARIAS**  
**pedroa@ingemel.com**  
**Ph 954-318-2264**

Address **20871 JOHNSON ST STE 115**  
**PEMBROKE PINES, FL 33029**

Item #	Line Item	Notes	Unit Price	Qty/Unit	Attch.	Docs
PSEN-18-02--01-01	Please submit documents here.	Supplier Product Code:	First Offer -	1 / each	Y	Y
Supplier Total					\$0.00	

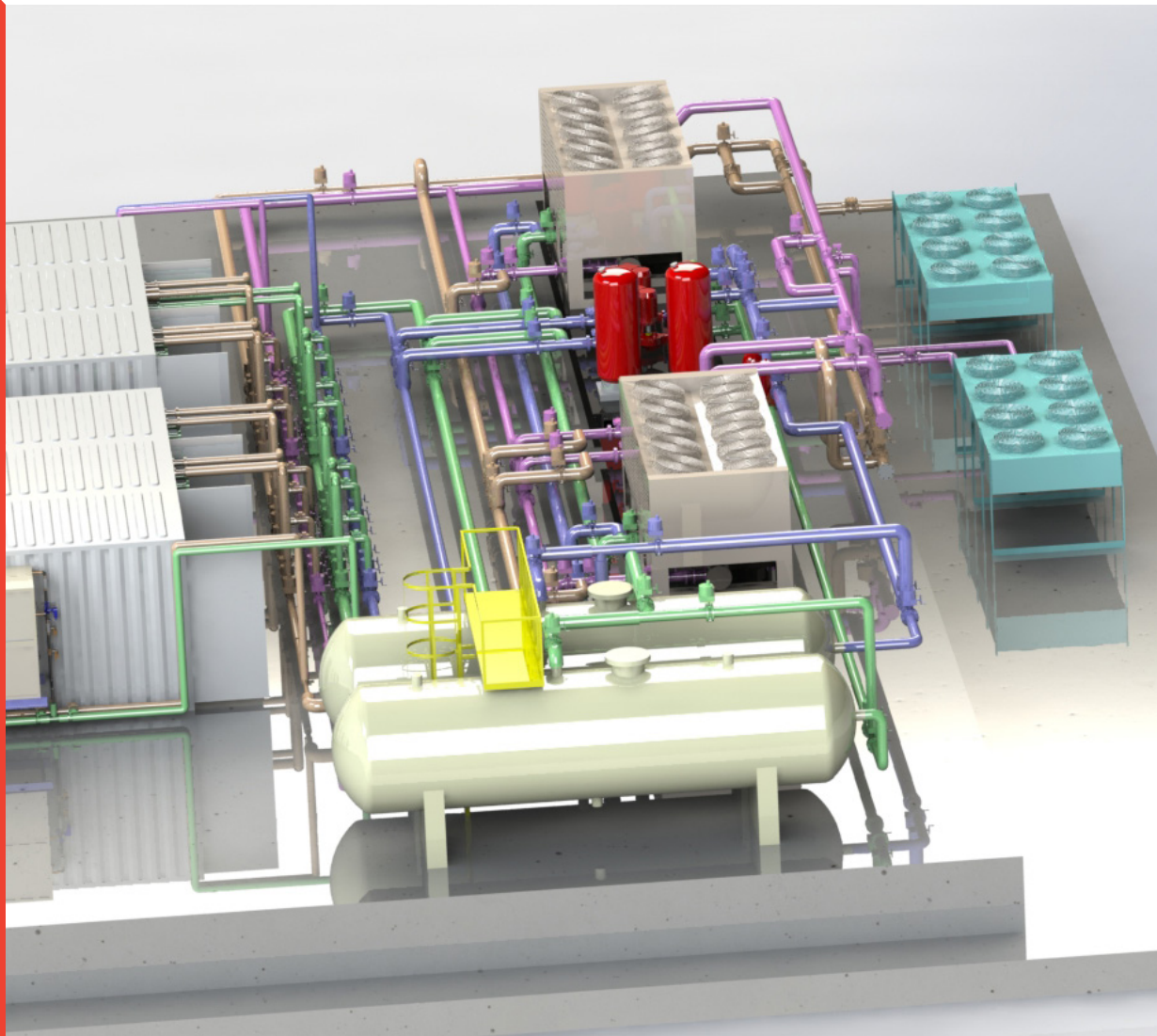
INGEMEL SA LLC

Item: **Please submit documents here.**

Attachments

PSEN-18-02\_IngemelMcKimCreed\_072418.pdf

INGEMEL S. A.  
ENGINEERING COMPANY



## RFQ # PSEN-18-02 "PROFESSIONAL SERVICE PROVIDERS (ARCHITECTURAL, ENGINEERING, SURVEYING & MAPPING)"

JULY 24, 2018  
INGEMEL S.A. LLC  
20871 JOHNSON STREET, SUITE 115  
PEMBROKE PINES, FL 33029  
(P) 954.318.2264  
(E) PEDROA@INGEMEL.COM



# Table of contents

<b>04</b>	Tab 1   Letter of Interest
<b>06</b>	Tab 2   Standard Form 330
<b>50</b>	Tab 3   Certified Minority Business Enterprise
<b>52</b>	Tab 4   Other Completed Documents
<b>69</b>	Tab 5   Professional Registration Certificates

# LETTER OF INTEREST

TAB 1 INCLUDES:

1. DESCRIPTION OF THE FIRM
2. LETTER OF INTEREST



IM-18-007 // 181485

July 24, 2018

The City of Pembroke Pines  
Purchasing Division  
8300 South Palm Drive  
Pembroke Pines, Florida 33025  
(954) 518-9020

**RE: Request for Qualifications # PSEN-18-02 — Professional Service Providers  
(Architectural, Engineering, Surveying & Mapping)**

Dear members of the selection committee,

Our firm INGEMEL S.A. LLC welcomes the opportunity to submit our qualifications for the Professional Services (Architectural, Engineering, Surveying & Mapping), #PSEN-18-02 for the City of Pembroke Pines.

We are a local Engineering Firm established in the City of Pembroke Pines since 2003. Our diverse engineering staff has over 30 years of engineering experience in many market sectors including commercial, educational, hospitality, government, institutional, mission critical data and telecom. We have the experience to provide state-of-the-art engineering services for today's complex buildings.

Our commitment to the City of Pembroke Pines is to provide quality projects and professional services in all engineering disciplines. We have partnered with McKim & Creed in order to offer additional areas such as civil, environmental, structural engineering and land surveying services.

In the following sections, you will find that INGEMEL personnel have the values and experience to exceed your professional engineering needs, including:

- All our engineering staff have extensive design, project management and construction experience.
- Our design and construction experience allow us to perform design reviews in compliance with Energy Building Codes. Our detailed review process is designed to enhance the final design drawings to ensure constructability, operations, maintenance and more importantly meeting the Owner's Project requirements.
- We specialize in troubleshooting existing facility infrastructure and developing custom MEP design documentation.
- We are experts at analyzing and optimizing control sequences for Building Automation Systems in accordance with engineer's design intent and owner requirements.

We look forward to having the opportunity to work with the City of Pembroke Pines in meeting our community's objectives.

As project executive/lead engineer, I will be your point of contact for this Request for Qualifications (RFQ). Please feel free to contact me should you have any questions regarding this matter.

Sincerely,  
INGEMEL S.A. LLC

A handwritten signature in blue ink, appearing to read 'Pedro Arias', written over the printed name.

Pedro Arias PE  
Director of Engineering  
pedroa@ingemel.com  
P: 954.318.2264

# STANDARD FORM 330

TAB 2 INCLUDES:

1. STANDARD FORM (SF) 330
2. ATTACHMENT A



# ARCHITECT - ENGINEER QUALIFICATIONS

## PART I - CONTRACT SPECIFIC QUALIFICATIONS

### A. CONTRACT INFORMATION

1. TITLE AND LOCATION (City and State)

Professional Service Providers (Architectural, Engineering, Surveying &amp; Mapping)

2. PUBLIC NOTICE DATE

June 12, 2018

3. SOLICITATION OR PROJECT NUMBER

PSEN-18-02

### B. ARCHITECT - ENGINEER POINT OF CONTACT

4. NAME AND TITLE

Pedro Arias, PE | Director of Electrical Division, Lead Electrical Engineer

5. NAME OF FIRM

Ingemel S.A. LLC

6. TELEPHONE

954.318.2264

7. FAX NUMBER

954.450.7216

8. EMAIL ADDRESS

pedroa@ingemel.com

### C. PROPOSED TEAM

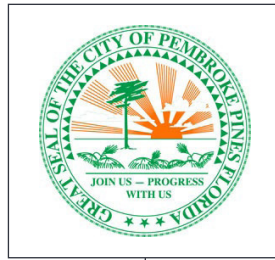
(Complete this section for the prime contractor and all key subcontractors.)

	(Check)				9. FIRM NAME  [ ] CHECK IF BRANCH OFFICE	10. ADDRESS	11. ROLE IN THIS CONTRACT
	PRIME	J-V	PARTNER	SUBCONTRACTOR			
a	X				Ingemel S.A. LLC [ ] CHECK IF BRANCH OFFICE	20871 Johnson Street Suite 115 Pembroke Pines, FL 33029	Prime
b				X	McKim & Creed, Inc. [ X ] CHECK IF BRANCH OFFICE	Billy Creek Commerce Center 5701 Division Drive Suite A Fort Myers, FL 33905	Subconsultant
c					[ X ] CHECK IF BRANCH OFFICE		
d					[ ] CHECK IF BRANCH OFFICE		
e					[ ] CHECK IF BRANCH OFFICE		
f					[ ] CHECK IF BRANCH OFFICE		
g					[ ] CHECK IF BRANCH OFFICE		

### D. ORGANIZATIONAL CHART OF PROPOSED TEAM

[X] (Attached)

# TEAM ORGANIZATIONAL CHART



## KEY:

- Ingemel S.A. LLC\*  
\*WBE/MBE Certified Firm
- McKim & Creed, Inc.

### PROJECT EXECUTIVE LEAD & LEAD ELECTRICAL ENGINEER

Pedro Arias, PE

### LEAD PROJECT ENGINEER

Patricia Morales, PE,  
LEED AP BD+C

### LEAD PLUMBING DESIGNER

Jhosmared Belmonte

### LEAD CONTROLS DESIGNER

Maria C. Morales, EIT

### LEAD CHEMICAL DESIGNER

Andres Silva

### PROJECT MANAGER & PROJECT LEAD

Scott Czubkowski, PE,  
LEED AP BD+C

### PRINCIPAL-IN-CHARGE

Street Lee, PE, ENV SP

### CLIENT LIAISON

Tracey Gallentine

### MECHANICAL, PLUMBING, & FIRE PROTECTION ENGINEER

Michael Rogers, PE, HFDP, LEED AP

### MECHANICAL, PLUMBING, & FIRE PROTECTION ENGINEER

Rick Cooper, PE

### ELECTRICAL ENGINEER

Jared Bettac, PE

### ELECTRICAL ENGINEER

Aubrey Haudricourt, PE

### ELECTRICAL DESIGNER

Laurel Smith, EI

### CIVIL ENGINEER

Curtis Burkett, PE, LEED AP

### SENIOR PROJECT MANAGER & LEAD MECHANICAL ENGINEER

Matthew Daves, PE, LEED AP, CBCP

### PROJECT ENGINEER

Phil Locke, PE

### ENERGY SPECIALIST

Chris M. Martin, Jr., PE

### INSTRUMENTATION & CONTROLS (I&C)

Gene Robinson, Jr., PE

**E. RESUMES OF KEY PERSONNEL PROPOSED FOR THIS CONTRACT**  
(Complete one Section E for each key person)

<b>12. NAME</b> <b>PEDRO ARIAS, P.E., CEC</b>	<b>13. ROLE IN THIS CONTRACT</b> <b>PROJECT EXECUTIVE / LEAD ELECTRICAL ENGINEER</b>	<b>14. YEARS EXPERIENCE</b> <table border="1"> <tr> <td>a. TOTAL <b>26</b></td> <td>b. WITH CURRENT FIRM <b>19</b></td> </tr> </table>		a. TOTAL <b>26</b>	b. WITH CURRENT FIRM <b>19</b>
a. TOTAL <b>26</b>	b. WITH CURRENT FIRM <b>19</b>				
<b>15. FIRM NAME AND LOCATION (City and State)</b> <b>INGEMEL S.A. – LLC   Pembroke Pines, FL. 33029</b>					
<b>16. EDUCATION (DEGREE AND SPECIALIZATION)-</b> <b>B.S., Electrical Engineering, Universidad Nacional de Colombia, Bogotá, Colombia S.A. –1992.</b> <b>B.S., Industrial Engineering, Universidad Distrital, Bogotá, Colombia S.A., 1994.</b> <b>Computer Technician, Instituto Superior de Carreras Tecnicas – Bogotá, Colombia 1989.</b> <b>Certified Tier Designer – Uptime Institute (Data Centers)</b>		<b>17. CURRENT PROFESSIONAL REGISTRATION (STATE AND DISCIPLINE)</b> <b>Professional Engineer – Colombia- P.E. No. 205-5261</b> <b>State of Florida, P.E. – License No. 63813</b> <b>State of Florida, CEC – License No. EC13001669</b>			
<b>18. OTHER PROFESSIONAL QUALIFICATIONS (Publications, Organizations, Training, Awards, etc.).</b> Mr. Arias is a fully bilingual (written and spoken English and Spanish) professional. He has over 26 years of experience in designing and supervising Electrical and Mechanical projects. He has a strong qualification as a Construction Manager leading the processes of Design, Bidding, Installation Supervision, Project Management and Start up of the projects. His expertise includes the electrical design of large scale / high risk projects for various industries including hospitals, hotels, commercial buildings, Industry and Data Centers. Designs include utility power feeders from energy service provider, emergency generators (stand-by, prime and continuous duty rated), UPS, DC Plants, Motor Control Centers and Panels, Lighting, Selective Coordination Studies, Lightning Protection, Photovoltaic energy design, etc. As an Accredited Tier Designer-UPTIME INSTITUTE, he provides engineering designs for the Mission Critical industry starting with a detailed assessment of physical and functional requirements delivering a design of efficient electrical systems that eliminate or minimize single points of failure, that have high availability, and are highly reliable. Mr. Arias has been member of Colombian Association of Mechanical and Electric Engineers - ACIEM, member of the board of directors of ACAIRE (Colombian Air Conditioning and Refrigeration Association) and member of ASHRAE. He has been a Technical instructor in Trainings for the Installation and Maintenance of Trane Chillers in Colombia, Dominican Republic, Barbados, Costa Rica, Belize and Panama.					

**19. RELEVANT PROJECTS**

(1) TITLE AND LOCATION (City and State)	(2) YEAR COMPLETED	
	PROFESSIONAL SERVICES 2016	CONSTRUCTION (If applicable) 2017
<b>Geothermal Cooling System</b> The Gables Club, Coral Gables, Florida.	<b>✓Check if project performed with current firm</b> Responsible for the design and commissioning of the electrical system for the new geothermal cooling system. Customer required remediation of a failing well water cooling system and the need for infrastructure upgrades that included more well water discharge capacity, new mechanical equipment and automated controls. Project was delivered within time and budget and exceeded energy savings goals.	
a.		
(1) TITLE AND LOCATION (City and State)	(2) YEAR COMPLETED	
<b>Telefonica Submarine Landing Station</b> Jacksonville, Florida, USA – Virginia Beach, Virginia, USA	<b>PROFESSIONAL SERVICES 2014</b>	
	<b>CONSTRUCTION (If applicable) 2017</b>	
<b>(3) BRIEF DESCRIPTION (Brief scope size, cost, etc.) AND SPECIFIC ROLE</b> Responsible for the design and installation drawings for the electrical systems including utility, emergency power, UPS power, DC power, fire detection, security, CCTV, and Data wiring systems for the submarine cable landing station and telecommunications facility that includes large data center areas, office areas and warehouse. Also participated during the construction stage solving issues that arise at the field, answering RFI's, approving materials and equipment submittals, etc.	<b>✓Check if project performed with current firm</b> <b>Role: Project Manager and Lead Electrical Designer</b>	
b.		
(1) TITLE AND LOCATION (City and State)	(2) YEAR COMPLETED	
<b>Comcast Facilities – 23 Sites in different cities throughout Florida including Plantation, Hialeah, South Miami, Homestead, Stuart, Key West, Miramar, Hallandale, Palm Beach, Naples.</b>	<b>PROFESSIONAL SERVICES 2014-2018 (Ongoing)</b>	
	<b>CONSTRUCTION (If applicable) 2014-2018 (Ongoing)</b>	
<b>(3) BRIEF DESCRIPTION (Brief scope size, cost, etc.) AND SPECIFIC ROLE</b> Responsible for the design of the electrical Systems for the telecommunications and data center rooms in order to minimize energy consumption while optimizing unit performance, maintainability and back-up for these mission critical facilities. Responsible for the design of electrical utility, emergency power, UPS power and DC power system upgrades. Also participate during the construction stage solving issues that arise at the field, answering RFI's, approving materials and equipment submittals, etc. Site sizes vary between 500 ft2 to 8,000 ft2.	<b>✓Check if project performed with current firm</b>	
c.		
(1) TITLE AND LOCATION (City and State)	(2) YEAR COMPLETED	
<b>Triara 7.0MW Data Center</b> <b>Monterrey, Mexico</b>	<b>PROFESSIONAL SERVICES 2016</b>	
d.	<b>CONSTRUCTION (If applicable) 2018</b>	

<p>(3) BRIEF DESCRIPTION (<i>Brief scope size, cost, etc.</i>) AND SPECIFIC ROLE</p> <p>Responsible for the design and installation drawings for the electrical systems upgrade for the Main Data Center. The project upgrade includes the district cooling system, the CRAC units, the high voltage (115KV) and low voltage (480V) switchgear system, the emergency generator (13.8KV) parallel system and the UPS power system.</p> <p><b>Role:</b> Project Manager and Lead Electrical Designer.</p>	<p>✓ <b>Check if project performed with current firm</b></p>			
<p>(1) TITLE AND LOCATION (<i>City and State</i>)</p> <p><b>City of Miami Fire Stations – 10 Locations in different parts of the city.</b></p>	<p>(2) YEAR COMPLETED</p> <table border="1"> <tr> <td data-bbox="974 241 1242 304">PROFESSIONAL SERVICES 2014</td> <td data-bbox="1242 241 1546 304">CONSTRUCTION (<i>If applicable</i>) 2015</td> </tr> </table>		PROFESSIONAL SERVICES 2014	CONSTRUCTION ( <i>If applicable</i> ) 2015
PROFESSIONAL SERVICES 2014	CONSTRUCTION ( <i>If applicable</i> ) 2015			
<p>(3) BRIEF DESCRIPTION (<i>Brief scope size, cost, etc.</i>) AND SPECIFIC ROLE</p> <p>Design of electrical systems for truck bays filtration systems and IAQ monitoring system and alarm. Responsible for revision and approval of electrical equipment submittals. Station sizes run between 1,150 ft.2 to 4,700 ft2. <b>Role:</b> Project Manager and Lead Electrical Designer.</p>	<p>✓ <b>Check if project performed with current firm</b></p>			

DARD FORM 330 (1/2004) PAGE 2

**E. RESUMES OF KEY PERSONNEL PROPOSED FOR THIS CONTRACT**  
*(Complete one Section E for each key person)*

<b>12. NAME</b> <b>PATRICIA MORALES, P.E., LEED AP BD+C</b>	<b>13. ROLE IN THIS CONTRACT</b> <b>LEAD MECHANICAL ENGINEER</b>	<b>14. YEARS EXPERIENCE</b> <table border="1"> <tr> <td>a. TOTAL <b>26</b></td> <td>b. WITH CURRENT FIRM <b>25</b></td> </tr> </table>		a. TOTAL <b>26</b>	b. WITH CURRENT FIRM <b>25</b>
a. TOTAL <b>26</b>	b. WITH CURRENT FIRM <b>25</b>				
<b>15. FIRM NAME AND LOCATION (City and State)</b> <b>INGEMEL S.A. – LLC   Pembroke Pines, FL. 33029</b>					
<b>16. EDUCATION (DEGREE AND SPECIALIZATION)-</b> <b>B.S., Mechanical Engineering, Universidad de los Andes, Bogotá, Colombia S.A. –1992.</b> Data Center Cooling Professional – DCD Pro – USA 10,000 Small Businesses Program – Miami Dade College- Goldman Sachs - 2015		<b>17. CURRENT PROFESSIONAL REGISTRATION (STATE AND DISCIPLINE)</b> <b>Professional Engineer in Colombia–S.A.– PE 230-5102</b> <b>State of Florida, P.E. – License No. 63818</b> <b>Accredited Professional LEED AP BD+C</b>			
<b>18. OTHER PROFESSIONAL QUALIFICATIONS (Publications, Organizations, Training, Awards, etc.).</b> Mrs. Morales is a fully bilingual (written and spoken English and Spanish) professional. She has over 26 years of experience in designing and supervising mechanical and plumbing projects and installations. She initiated as assistant engineer of the HVAC Division for the company in Colombia S.A. and has occupied different positions through out the years. She was also a Validation Engineer for a year during the construction of a large pharmaceutical plant. She relocated to Florida with the company in the year 2000 to occupy the Director of Engineering position. Mrs. Morales was member of the board of directors of ACAIRE (Colombian Air Conditioning and Refrigeration Association) and is a current member of ASHRAE. She has been a Professor at Universidad Minuto de Dios in Bogota, Colombia (Air Conditioning for Civil Engineers). Mrs. Morales was responsible for the development of the design procedures for the INGEMEL HVAC Division to obtain the ISO9001 quality assurance certification (2000) in Colombia. She is part of the team in charge of sustainable building HVAC design. ASHRAE 189.1 compliance and LEED certification; energy modeling, thermal energy storage, airside & waterside energy recovery and energy management for new and existing facilities. Her experience also includes mechanical designs for industrial and residential premises in different cities and climates, both in metric and SI formats.					

**19. RELEVANT PROJECTS**

(1) TITLE AND LOCATION <i>(City and State)</i>	(2) YEAR COMPLETED	
<b>Telefonica Submarine Landing Station</b> Virginia Beach, Virginia, USA	<b>PROFESSIONAL SERVICES</b> <b>2016</b>	<b>CONSTRUCTION <i>(If applicable)</i></b> <b>2018</b>
<b>(3) BRIEF DESCRIPTION <i>(Brief scope size, cost, etc.)</i> AND SPECIFIC ROLE</b> <span style="float: right;"><b>✓Check if project performed with current firm</b></span> Responsible for the design and installation drawings for the mechanical and fire sprinkler systems including mission critical areas (data center) for the submarine cable landing station and telecommunications facility that includes large data center areas, office areas, generator room, switchgear room and warehouse. Also participated during the construction stage solving field related issues, answering RFI's, approving materials and equipment submittals, etc. Approx. 22,000 sq. ft. facility. Approx. \$5,000,000 <b>Role:</b> Lead Mechanical Designer.		
a.		
<b>(1) TITLE AND LOCATION <i>(City and State)</i></b> <b>Geothermal Cooling System</b> <b>The Gables Club, Coral Gables, Florida</b>	<b>PROFESSIONAL SERVICES</b> <b>2016</b>	<b>CONSTRUCTION <i>(If applicable)</i></b> <b>2017</b>
<b>(3) BRIEF DESCRIPTION <i>(Brief scope size, cost, etc.)</i> AND SPECIFIC ROLE</b> <span style="float: right;"><b>✓Check if project performed with current firm</b></span> Responsible for the design and commissioning of the mechanical system including selection of condenser water pumps and heat exchangers. Customer required remediation of a failing well water cooling system and the need for infrastructure upgrades that included more well water discharge capacity, new mechanical equipment and automated controls. Project was delivered within time and budget and exceeded energy savings goals.		
b.		
<b>(1) TITLE AND LOCATION <i>(City and State)</i></b> <b>Surf Club</b> <b>Miami, Florida, USA</b>	<b>PROFESSIONAL SERVICES</b> <b>2015</b>	<b>CONSTRUCTION <i>(If applicable)</i></b> <b>2017</b>
<b>(3) BRIEF DESCRIPTION <i>(Brief scope size, cost, etc.)</i> AND SPECIFIC ROLE</b> <span style="float: right;"><b>✓Check if project performed with current firm</b></span> Responsible for design concept to participate in best design bid. Responsible for the mechanical design of a 2,000-ton central energy plant to fit into the smallest foot print. Because of the cost of real estate on North Beach, the owner selected our proposal based on a solution that freed-up over 13 parking spaces, allowed the generator plant to co-exist with the cooling plant and a design that was aesthetically pleasing to the city. Project was a success. Detailed design and construction drawings allowed for an installation that exceeded time and budget metrics and ultimately exceeded operating cost expectations.		
c.		
<b>(1) TITLE AND LOCATION <i>(City and State)</i></b> <b>Comcast Facilities – 23 Sites in different cities throughout Florida including Plantation, Hialeah, South Miami, Homestead, Stuart, Key West, Miramar, Hallandale, Palm Beach, Naples.</b>	<b>PROFESSIONAL SERVICES</b> <b>2014-2018 (Ongoing)</b>	<b>CONSTRUCTION <i>(If applicable)</i></b> <b>2014-2018 (Ongoing)</b>
<b>(3) BRIEF DESCRIPTION <i>(Brief scope size, cost, etc.)</i> AND SPECIFIC ROLE</b> <span style="float: right;"><b>✓Check if project performed with current firm</b></span> Responsible for the design of the HVAC Systems for the telecommunications and data center rooms in order to minimize energy consumption while optimizing unit performance, maintainability and back-up for these mission critical facilities. Responsible for the design of mechanical ventilation systems for the Battery Rooms. Also participate during the construction stage solving field related issues answering RFI's, approving materials and equipment submittals, etc. Site sizes vary between 500 ft2 to 8,000 ft2.		
d.		

(3) BRIEF DESCRIPTION ( <i>Brief scope size, cost, etc.</i> ) AND SPECIFIC ROLE Responsible for the design and installation drawings for the electrical systems upgrade for the Main Data Center. The project upgrade includes the district cooling system, the CRAC units, the high voltage (115KV) and low voltage (480V) switchgear system, the emergency generator (13.8KV) parallel system and the UPS power system. <b>Role:</b> Project Manager and Lead Electrical Designer.	<input checked="" type="checkbox"/> <b>Check if project performed with current firm</b>	
(1) TITLE AND LOCATION ( <i>City and State</i> ) <b>City of Miami Fire Stations – 10 Locations in different parts of the city.</b>	(2) YEAR COMPLETED	
	PROFESSIONAL SERVICES <b>2014</b>	CONSTRUCTION ( <i>If applicable</i> ) <b>2015</b>
(3) BRIEF DESCRIPTION ( <i>Brief scope size, cost, etc.</i> ) AND SPECIFIC ROLE Design of electrical systems for truck bays filtration systems and IAQ monitoring system and alarm. Responsible for revision and approval of electrical equipment submittals. Station sizes run between 1,150 ft.2 to 4,700 ft2. <b>Role:</b> Project Manager and Lead Electrical Designer.	<input checked="" type="checkbox"/> <b>Check if project performed with current firm</b>	

e.

DARD FORM 330 (1/2004) PAGE 2

**E. RESUMES OF KEY PERSONNEL PROPOSED FOR THIS CONTRACT**  
(Complete one Section E for each key person)

12. NAME <b>JHOSMARED BELMONTE</b>	13. ROLE IN THIS CONTRACT <b>Plumbing Engineer</b>	14. YEARS EXPERIENCE	
		a. TOTAL <b>17</b>	b. WITH CURRENT FIRM <b>4</b>
15. FIRM NAME AND LOCATION (City and State) <b>INGEMEL S.A. – LLC   Pembroke Pines, FL. 33029</b>			
16. EDUCATION (DEGREE AND SPECIALIZATION)- <b>Bachelor of Science in Civil Engineering-Universidad Nacional de las Fuerzas Armadas-Venezuela</b> <b>Master in Project Management-Universidad Catolica-Venezuela</b> Certified in Robot Milenium (Structural Design Program) Certified in Ip3 Aguas Blancas Certified in Epanet		17. CURRENT PROFESSIONAL REGISTRATION (STATE AND DISCIPLINE) <b>Professional Engineer – Venezuela – PE#121573</b>	
18. OTHER PROFESSIONAL QUALIFICATIONS (Publications, Organizations, Training, Awards, etc.). Mrs. Belmonte is in charge of the design of the plumbing systems for the projects developed by the company. Her tasks include the design of water, wastewater and storm drainage systems, hot water recirculating systems, etc. She is also responsible for the design of earthwork and roadway projects, when applicable to a specific project. Her experience includes large projects in several industries such as large condominiums and high-rise buildings, hotels, residential housing, hospitals and shopping centers. Mrs. Belmonte also has broad international experience in large water, wastewater and water resources projects.			

**19. RELEVANT PROJECTS**

	(1) TITLE AND LOCATION (City and State) <b>Telefonica Submarine Landing Station Virginia Beach, Virginia, USA</b>	(2) YEAR COMPLETED	
		PROFESSIONAL SERVICES <b>2016</b>	CONSTRUCTION (If applicable) <b>2018</b>
a.	(3) BRIEF DESCRIPTION (Brief scope size, cost, etc.) AND SPECIFIC ROLE <input checked="" type="checkbox"/> Check if project performed with current firm Responsible for the design and installation drawings for the plumbing systems including potable water, wastewater, condensate & storm systems for the submarine cable landing station and telecommunications facility that included large data center areas, office areas, generator room, switchgear room and warehouse. Also participated during the construction stage, solving field related issues, answering RFI's, approving materials and equipment submittals, etc. Approx. 22,000 sq. ft. facility. Approx. \$5,000,000 <b>Role: Lead Plumbing Designer</b>		
	(1) TITLE AND LOCATION (City and State) <b>Telefonica Submarine Landing Station Jacksonville, Florida, USA</b>	(2) YEAR COMPLETED	
		PROFESSIONAL SERVICES <b>2014</b>	CONSTRUCTION (If applicable) <b>2015</b>
b.	(3) BRIEF DESCRIPTION (Brief scope size, cost, etc.) AND SPECIFIC ROLE <input checked="" type="checkbox"/> Check if project performed with current firm Responsible for the design and installation drawings for the plumbing systems including potable water, wastewater, condensate & storm systems for the submarine cable landing station and telecommunications facility that included large data center areas, office areas, generator room, switchgear room and warehouse. Also participated during the construction stage, solving field related issues, answering RFI's, approving materials and equipment submittals, etc. Approx. 12,000 sq. ft. facility. Approx. \$3,000,000 <b>Role: Lead Plumbing Designer</b>		
	(1) TITLE AND LOCATION (City and State) <b>Banesco (Bank) Data Center Valencia, Venezuela</b>	(2) YEAR COMPLETED	
		PROFESSIONAL SERVICES <b>2014</b>	CONSTRUCTION (If applicable) <b>In progress</b>
c.	(3) BRIEF DESCRIPTION (Brief scope size, cost, etc.) AND SPECIFIC ROLE <input checked="" type="checkbox"/> Check if project performed with current firm Responsible for the design and installation drawings for the plumbing systems including potable water, wastewater, condensate & storm systems for the Bank Data Center and Offices. System design included Water Booster Pump Systems, Drain Pump Systems for underground garage and main sanitary and storm lines all the way to city connections and catch basins. Participated in multiple design meetings, coordination meetings, etc. Approx. 90,000 sq. ft. facility. Approx. \$13,000,000 <b>Role: Lead Plumbing Designer</b>		
	(1) TITLE AND LOCATION (City and State) <b>Briquetera Industrial Plant, Puerto Ordaz, Venezuela</b>	(2) YEAR COMPLETED	
		PROFESSIONAL SERVICES <b>2013</b>	CONSTRUCTION (If applicable) <b>2013</b>
d.	(3) BRIEF DESCRIPTION (Brief scope size, cost, etc.) AND SPECIFIC ROLE <input type="checkbox"/> Check if project performed with current firm Responsible for the design of the plumbing systems for the Briquetera industry, which has an area of 28,138 Sq. Yards, is made up of two administrative buildings, two guardhouses, one warehouse and the area for the Briquetera plant. Project Engineer responsible for design of storm water system (2533 Lf), water supply system for each building (1700LF), pumps systems, and wastewater systems (998LF).		
	(1) TITLE AND LOCATION (City and State) <b>June 24th Battalion, Campo de Carabobo, Venezuela</b>	(2) YEAR COMPLETED	
		PROFESSIONAL SERVICES <b>2012</b>	CONSTRUCTION (If applicable) <b>2013</b>
e.	(3) BRIEF DESCRIPTION (Brief scope size, cost, etc.) AND SPECIFIC ROLE <input checked="" type="checkbox"/> Check if project performed with current firm Responsible for the design of the plumbing systems of the 29.5-acre Military Complex, consisting of 13 Buildings. The project included the design of 4,000 feet of water lines ranging from 2 to 6 inches in diameter and 4,600 feet of sewage collection system.		



**E. RESUMES OF KEY PERSONNEL PROPOSED FOR THIS CONTRACT**  
(Complete one Section E for each key person)

<b>12. NAME</b> <b>MARIA C. MORALES</b>	<b>13. ROLE IN THIS CONTRACT</b> <b>LEAD CONTROLS ENGINEER</b> <b>ELECTRICAL ENGINEER</b>	<b>14. YEARS EXPERIENCE</b> <table border="1"> <tr> <td>a. TOTAL <b>24</b></td> <td>b. WITH CURRENT FIRM <b>23</b></td> </tr> </table>		a. TOTAL <b>24</b>	b. WITH CURRENT FIRM <b>23</b>
a. TOTAL <b>24</b>	b. WITH CURRENT FIRM <b>23</b>				
<b>15. FIRM NAME AND LOCATION (City and State)</b> <b>INGEMEL S.A.-LLC   Pembroke Pines , FL-33029</b>					
<b>16. EDUCATION (DEGREE AND SPECIALIZATION)</b> <b>B.S. Electrical Engineer with a minor in Controls –</b> <b>Universidad de los Andes, Bogotá, Colombia 1994.</b> <b>Tridium Niagara AX Certified</b> <b>Tridium Niagara 4 Certified</b> <b>Certified in Niagara Security Systems</b> <b>Certified in Siemens Apogee System</b> <b>Certified Programmer in Delta Controls Systems</b> <b>Certified American Automatrix Programmer</b>		<b>17. CURRENT PROFESSIONAL REGISTRATION (STATE AND DISCIPLINE)</b> <b>Professional Engineer - Colombia</b> <b>EIT (Engineer in Training)</b>			
<b>18. OTHER PROFESSIONAL QUALIFICATIONS (Publications, Organizations, Training, Awards, etc.)</b> Mrs. Morales is a fully bilingual (written and spoken English and Spanish) professional, with thorough Training in PLC and control and Automation systems. Having also studied and assisted in the design and operation of HVAC systems and electrical systems has the advantage of knowing the intrinsic details of the operation to provide energy efficient cost-effective solutions without compromising the Mechanical and or Electrical designs. She has been responsible for the successful completion of design, installation, start-up and commissioning of various automation, PLC and BMS (Building Automation) systems. She has also been responsible for commissioning, compliance, and Computer System Validation in FDA regulated environments and pharmaceuticals and full Validation life cycle. Her experience also includes the design and implementation of automated controls systems for Multi-tenant facilities, that are able to be integrated through communication protocols such as BACNET and that allow the owner to bill each tenant or user for their own cooling consumption and electrical consumption. Some of her outstanding achievements include the successful delivery of <b>Design, Build, program, start-up, and commissioning of BAS systems, HVAC control , CCTV, Access Control, lighting control, Automation, integration, Chiller plant optimization, energy optimization and Load Shedding routines for: Pharmaceuticals and Health related facilities</b> like :Pharmacy and new operating rooms at Cleveland Clinic -Florida, UM Life science Building BMS and <b>smoke evacuation</b> controls, Andrx Pharmaceuticals, Gambro Renal and others in Florida as well as Bayer Labs in Cali Colombia, Schering Plough in Bogota Colombia; <b>Industrial, Commercial, Hospitality, Schools and Hospitals</b> like American Express Plantation Building, American Express Weston Building, Jackson Memorial hospital, Jackson North, Mount Sinai Hospital, Bethesda Hospital, Miami Airport, American Heritage School, Doral Golf Resort and Spa, among others. Multisite Projects and Data Centers like various Comcast Stations, existing Data Center for Equinix Miami, Telefonica Virginia Beach, Jacksonville and Americas Central Monitoring Project. Monitoring station for centralization of all utilities including chilled water, electricity, potable water, water treatment plants for London Regional Panama – Panama Pacifico development and the Panama Government.					

**19. RELEVANT PROJECTS**

	(1) TITLE AND LOCATION (City and State)	(2) YEAR COMPLETED	
		PROFESSIONAL SERVICES 2016	CONSTRUCTION (If applicable) 2018
a.	<b>Telefonica Submarine Landing Station</b> Virginia Beach, Virginia, USA		
	<b>(3) BRIEF DESCRIPTION (Brief scope size, cost, etc.) AND SPECIFIC ROLE</b> <span style="float: right;">✓Check if project performed with current firm</span> Responsible for the design drawings for the building automation system (EMS/BMS/BAS), CCTV Systems and Access Systems for the cable landing station and telecommunications facility that includes large data center areas, office areas, generator room, switchgear rooms, Telecommunication rooms and warehouse. Responsible of installation and programming of all control systems, integration of all utility equipment ( Switchgear, DC plants, UPS, Generators, Fuel systems, HVAC, Hydrogen Monitoring systems etc.), troubleshooting, commissioning, validation, training and remote monitoring of performance of systems. Responsible for remote assistance and monitoring of all mechanical, electrical and plumbing systems. Approx. 22,000 sq. ft. facility. Approx. \$5,000,000 <b>Role:</b> Lead Controls Designer		
b.	<b>Telefonica Submarine Landing Station</b> Jacksonville, Florida, USA		
	<b>(3) BRIEF DESCRIPTION (Brief scope size, cost, etc.) AND SPECIFIC ROLE</b> <span style="float: right;">✓Check if project performed with current firm</span> Responsible for the design drawings for the building automation system (BMS/BAS), CCTV Systems and Access Systems for the cable landing station and telecommunications facility that includes large data center areas, office areas, generator room, switchgear rooms and warehouse. Responsible of installation and programming of all systems, troubleshooting, commissioning, validation, training and remote monitoring of performance of systems. Responsible for remote assistance and monitoring of all mechanical, electrical and plumbing systems. Approx. 12,000 sq. ft. facility. Approx. \$3,000,000 <b>Role:</b> Lead Controls Designer		
c.	<b>Geothermal Cooling System</b> <b>The Gables Club, Coral Gables, Florida</b>		
	<b>(3) BRIEF DESCRIPTION (Brief scope size, cost, etc.) AND SPECIFIC ROLE</b> <span style="float: right;">✓Check if project performed with current firm</span> Responsible for the design drawings for the building automation system (BMS/BAS), CCTV Systems and Access Systems for the cable landing station and telecommunications facility that includes large data center areas, office areas, generator room, switchgear rooms and warehouse. Responsible of installation and programming of all systems, troubleshooting, commissioning, validation, training and remote monitoring of performance of systems. Responsible for remote assistance and monitoring of all mechanical, electrical and plumbing systems. Approx. 12,000 sq. ft. facility. Approx. \$3,000,000 <b>Role:</b> Lead Controls Designer		





**E. RESUMES OF KEY PERSONNEL PROPOSED FOR THIS CONTRACT**  
(Complete one Section E for each key person)

<b>12. NAME</b> <b>ANDRES SILVA</b>	<b>13. ROLE IN THIS CONTRACT</b> <b>Water and Waste water Engineer – Chemical engineer</b>	<b>14. YEARS EXPERIENCE</b> <table border="1"> <tr> <td>a. TOTAL <b>28</b></td> <td>b. WITH CURRENT FIRM <b>15</b></td> </tr> </table>		a. TOTAL <b>28</b>	b. WITH CURRENT FIRM <b>15</b>
a. TOTAL <b>28</b>	b. WITH CURRENT FIRM <b>15</b>				
<b>15. FIRM NAME AND LOCATION (City and State)</b> <b>INGEMEL S.A. – LLC   Pembroke Pines, FL. 33029</b>					
<b>16. EDUCATION (DEGREE AND SPECIALIZATION)-</b> <b>B.S., Chemical Engineering- Universidad Nacional de Colombia - Bogotá, Colombia S.A., Finished in 1987 – Received Title in 1990.</b> <b>MBA in Chemical Engineer – University of Houston, Houston Texas, 1990.</b> <b>Waste Water Treatment Systems Design and Operation- Germany, 1994.</b> <b>Design Control and Operation of Waste Water Treatment Plants – Sao Paulo Brazil, 1995</b>		<b>17. CURRENT PROFESSIONAL REGISTRATION (STATE AND DISCIPLINE)</b>			
<b>18. OTHER PROFESSIONAL QUALIFICATIONS (Publications, Organizations, Training, Awards, etc.).</b> Mr. Silva is a fully bilingual professional (written and spoken English and Spanish) with 28 years of experience including design, installation, start-up and operation of industrial and municipal water and waste water treatment plants. If required by the customer he can also perform inspections during construction and installation, start-up and training, and operations verification for a period of time to guarantee the proper performance of the system as designed. Mr. Silva is a Member of WEF.					

**19. RELEVANT PROJECTS**

(1) TITLE AND LOCATION (City and State) <b>Geothermal Cooling System The Gables Club, Coral Gables, Florida</b>	(2) YEAR COMPLETED	
	PROFESSIONAL SERVICES <b>2016</b>	CONSTRUCTION (If applicable) <b>2017</b>
<b>a.</b> (3) BRIEF DESCRIPTION (Brief scope size, cost, etc.) AND SPECIFIC ROLE Responsible for the design and commissioning of the well water system including selection of well water pumps and verification of well capacities and sizes. Customer required remediation of a failing well water cooling system and the need for infrastructure upgrades that included more well water discharge capacity, new mechanical equipment and automated controls. Project was delivered within time and budget and exceeded energy savings goals.	<input checked="" type="checkbox"/> <b>Check if project performed with current firm</b>	
(1) TITLE AND LOCATION (City and State) <b>Domestic Wastewater Treatment Plant for a condominium- HILTON HOTEL, 60,000 gpd, Neves, British Islands</b>	(2) YEAR COMPLETED	
	PROFESSIONAL SERVICES <b>2016</b>	CONSTRUCTION (If applicable) <b>2016</b>
<b>b.</b> (3) BRIEF DESCRIPTION (Brief scope size, cost, etc.) AND SPECIFIC ROLE Responsible for the design, construction management and commissioning for the expansion of a wastewater treatment plant, cap: 60,000 GPD for the sewage produced by the Hotel.	<input checked="" type="checkbox"/> <b>Check if project performed with current firm</b>	
(1) TITLE AND LOCATION (City and State) <b>Expansion of a Domestic Wastewater Treatment Plant for The Disney Island Cast Away- Bahamas</b>	(2) YEAR COMPLETED	
	PROFESSIONAL SERVICES <b>2015</b>	CONSTRUCTION (If applicable) <b>In Progress</b>
<b>c.</b> (3) BRIEF DESCRIPTION (Brief scope size, cost, etc.) AND SPECIFIC ROLE Responsible for the design, construction management and commissioning of the expansion of the wastewater treatment plant, second stage, cap: 60,000 GPD for the sewage produced by the Island during the Daily Cruise visits. (DYAF for grease Removal, Activated Sludge-Extended aeration as secondary treatment, sludge dewatering with filter press, Tertiary filters by gravity fed Multimedia Filters for Water reuse in the sprinkling of the green zones of the Island as well as in the Toilets of the Restrooms Stations).	<input type="checkbox"/> <b>Check if project performed with current firm</b>	
(1) TITLE AND LOCATION (City and State) <b>Domestic Wastewater Treatment Plant for Service Plaza, Florida Turnpike Highway Fort Drum Service plaza , Florida USA</b>	(2) YEAR COMPLETED	
	PROFESSIONAL SERVICES <b>2013</b>	CONSTRUCTION (If applicable) <b>2014</b>
<b>d.</b> (3) BRIEF DESCRIPTION (Brief scope size, cost, etc.) AND SPECIFIC ROLE Responsible for the design, construction management and commissioning for a wastewater treatment plant cap: 120,000 gpd, to treat the effluent from the Service plaza (MBR, with Activated Sludge, extended aeration.). Activities performed: Process Designer, Dimensioning, Hydraulic calculations and design, equipment designing, Inspection during construction and Installation. Responsible for operation supervision for two months.	<input type="checkbox"/> <b>Check if project performed with current firm</b>	
(1) TITLE AND LOCATION (City and State) <b>Montenay Power Corp. – Miami, Florida.</b>	(2) YEAR COMPLETED	
	PROFESSIONAL SERVICES <b>2005</b>	CONSTRUCTION (If applicable) <b>2008</b>
<b>e.</b> (3) BRIEF DESCRIPTION (Brief scope size, cost, etc.) AND SPECIFIC ROLE Responsible for the design of a new wastewater treatment plant for the Miami Dade County – Resources Recovery Facility. Size of treatment plant = 300 gal./min. Responsible of project supervision during the construction stage. Responsible for all permits from DERM and the Building department. Responsible for providing part of the equipment for the project.	<input checked="" type="checkbox"/> <b>Check if project performed with current firm</b>	

**E. RESUMES OF KEY PERSONNEL PROPOSED FOR THIS CONTRACT**  
(Complete one Section E for each key person.)

12. NAME	13. ROLE IN THIS CONTRACT	14. YEARS EXPERIENCE	
		a. TOTAL	b. WITH CURRENT FIRM
		28	1

15. FIRM NAME AND LOCATION (CITY AND STATE)

McKim &amp; Creed | Jacksonville, FL

16. EDUCATION (DEGREE AND SPECIALIZATION)

M.S., Project Management

B.S., Mechanical Engineering

17. CURRENT PROFESSIONAL REGISTRATION (STATE AND DISCIPLINE)

Professional Engineer: FL #50816

LEED Accredited Professional

18. OTHER PROFESSIONAL QUALIFICATIONS (PUBLICATIONS, ORGANIZATIONS, TRAINING, AWARDS, ETC.)

Mr. Czubkowski is a leader in operational, business and construction management with excellent resource and organizational skills and nearly 30 years of proven industry track record. He has developed and managed design-build business segment and energy solution offerings, and is skilled at providing independent system analysis, facility audits, commissioning and owner's representation services. As a senior project engineer with McKim & Creed, Mr. Czubkowski is responsible for developing and implementing innovative solutions to complex issues.

**F. RELEVANT PROJECTS**

(1) TITLE AND LOCATION (City and State)	(2) YEAR COMPLETED	
	PROFESSIONAL SERVICES	CONSTRUCTION (if Applicable)
	2018	Ongoing
<b>WWRF Operations Building and Hardening of Biosolids Building</b> City of Largo   Largo, FL		
(3) BRIEF DESCRIPTION (BRIEF SCOPE, SIZE, COST, ETC.) AND SPECIFIC ROLE [X] Check if project performed with current firm a. Mr. Czubkowski worked as the lead project manager on three thermal energy storage systems. These thermal energy storage solutions were part of a comprehensive project which also included load side HVAC, lighting and control solutions. Implementation included permitting in three separate municipalities, site civil development, concrete tank construction, diffuser assembly and mechanical system integration. All three projects resulted in being able to shift HVAC cooling loads for over nine hours in peak cooling months resulting in full rebates and rate concessions from the utility company.		
(1) TITLE AND LOCATION (City and State)	(2) YEAR COMPLETED	
	PROFESSIONAL SERVICES	CONSTRUCTION (if Applicable)
	2016	2017
<b>Geothermal Cooling System</b> The Gables Club   Coral Gables, FL		
(3) BRIEF DESCRIPTION (BRIEF SCOPE, SIZE, COST, ETC.) AND SPECIFIC ROLE [ ] Check if project performed with current firm b. Mr. Czubkowski served as lead project manager and system engineer. The Client required a remediation of a failing well water cooling system and the need for infrastructure upgrades taht included more well water discharge capacity, new mechanical equipment, and automated controls. The project was delivered on-time, within budget, and exceeded energy cost savings.		
(1) TITLE AND LOCATION (City and State)	(2) YEAR COMPLETED	
	PROFESSIONAL SERVICES	CONSTRUCTION (if Applicable)
	2017	Ongoing
<b>Pavilion Domestic Hot Water Study</b> UF Health   Jacksonville, FL		
(3) BRIEF DESCRIPTION (BRIEF SCOPE, SIZE, COST, ETC.) AND SPECIFIC ROLE [X] Check if project performed with current firm c. Mr. Czubkowski served as senior project engineer and developed a strategy and surveyed domestic hot water system(s) for compliance with AHCA requirements. Field work included physical survey of domestic hot water appliances, findings, remediation and issued final report to for AHCA review. Root cause of poor DHW was leaking tempering valves at OR hand wash sinks.		
(1) TITLE AND LOCATION (City and State)	(2) YEAR COMPLETED	
	PROFESSIONAL SERVICES	CONSTRUCTION (if Applicable)
	2017	Ongoing
<b>Plantation Bay Reverse Osmosis (RO) Water Treatment Plant Improvements</b> Flagler County   Bunnell, FL		
(3) BRIEF DESCRIPTION (BRIEF SCOPE, SIZE, COST, ETC.) AND SPECIFIC ROLE [X] Check if project performed with current firm d. Mr. Czubkowski is serving as senior project engineer to provide engineering services that include design, permitting, bidding, construction and SCADA system review to improve the Plantation Bay WTP. The plant is being redesigned to employ the RO process to improve water quality. The improved facility will have an average daily flow of 500,000 gpd with a standby of 250,000 gpd and allowance for future expansions. Electrical systems and motor controllers are being replaced; but the existing operations building, clear well, ground storage tank, hydropneumatic tank, and high service transfer pump station will remain in place.		
(1) TITLE AND LOCATION (City and State)	(2) YEAR COMPLETED	
	PROFESSIONAL SERVICES	CONSTRUCTION (if Applicable)
	2017	Ongoing
<b>Steam PRV Relocation</b> UF Health   Jacksonville, FL		
(3) BRIEF DESCRIPTION (BRIEF SCOPE, SIZE, COST, ETC.) AND SPECIFIC ROLE [X] Check if project performed with current firm e. Mr. Czubkowski is serving as senior project engineer. This project included design and relocation of PRV stations from electrical rooms to mechanical rooms, along with condensate management. Systems impacted included reheat HX's, ER heating, AHU heating, and kitchen services.		

**E. RESUMES OF KEY PERSONNEL PROPOSED FOR THIS CONTRACT**  
(Complete one Section E for each key person.)

12. NAME	13. ROLE IN THIS CONTRACT	14. YEARS EXPERIENCE	
		a. TOTAL	b. WITH CURRENT FIRM
		35	32

15. FIRM NAME AND LOCATION (CITY AND STATE)

McKim &amp; Creed | Clearwater, FL

16. EDUCATION (DEGREE AND SPECIALIZATION)

M.B.A.

B.S., Civil Engineering

17. CURRENT PROFESSIONAL REGISTRATION (STATE AND DISCIPLINE)

Professional Engineer: FL #49212

Envision Sustainability Professional

18. OTHER PROFESSIONAL QUALIFICATIONS (PUBLICATIONS, ORGANIZATIONS, TRAINING, AWARDS, ETC.)

As a senior vice president and project manager, Mr. Lee oversees a variety of civil engineering and water-oriented projects. His responsibilities include project planning and development, team management, QA/QC, permitting and project execution. He has designed all facets of water systems and wastewater sewer systems, facility master planning, CIP development, developed stormwater systems, performed hydrology and stormwater studies, and landfill expansions and erosion control systems. Mr. Lee has established many long-term relationships with customers and is noted for his ability to plan and design projects that fit within the customer's valid requirements, time frame and budget.

**F. RELEVANT PROJECTS**

(1) TITLE AND LOCATION (City and State)		(2) YEAR COMPLETED	
		PROFESSIONAL SERVICES	CONSTRUCTION (if Applicable)
<b>Lift Station 87 Design and Construction Services</b> City of Sarasota   Sarasota, FL		2014	Ongoing
(3) BRIEF DESCRIPTION (BRIEF SCOPE, SIZE, COST, ETC.) AND SPECIFIC ROLE [X] Check if project performed with current firm a. Mr. Lee served is serving as principal-in-charge for Lift Station 7 (LS7), which handles approximately one-third of the City of Sarasota's wastewater flow (extreme wet weather flow 9.5 mgd), is at the end of its useful life and has a history of mechanical failures and overflows. To resolve the situation, the city is replacing the aged lift station with a new, state-of-the-art facility (Lift Station 87 (LS87)). Transfer of gravity flows from LS7 to LS87 requires microtunneling under an environmentally sensitive waterway, the Hudson Bayou, and beneath the historical Hudson Bayou Bridge, constructed in 1914.			
<b>28th Street Bridge at Bridgeway Acres Landfill Facility</b> Pinellas County   St. Petersburg, FL		2017	Ongoing
(3) BRIEF DESCRIPTION (BRIEF SCOPE, SIZE, COST, ETC.) AND SPECIFIC ROLE [X] Check if project performed with current firm b. Mr. Lee served as project manager. McKim & Creed provided, mechanical, electrical, structural, and civil engineering services for the design of an addition to the existing Scale House facility at the Pinellas County Solid Waste Landfill. The facility addition included a 600 SF office expansion to provide on-site supervisory offices at the Scale House. Included in the design was voice and data communications with each existing scale house, mechanical, plumbing, and site/civil design. The project required the full-scale house and traffic lanes to be operational during construction. Our team also provided design a new motorized entrance gate, new signage and landscaping at the landfill entrance.			
<b>Reclaimed Water Interconnect</b> Pinellas County   Pinellas County, FL		2000	2008
(3) BRIEF DESCRIPTION (BRIEF SCOPE, SIZE, COST, ETC.) AND SPECIFIC ROLE [X] Check if project performed with current firm c. Mr. Lee provided engineering design services for the reclaimed water transmission mains, high service pump station, ground storage tank and installation and programming of SCADA systems necessary to connect the City of Clearwater's northeast water pollution control facility and City of Oldsmar's reclaimed water system to Pinellas County's north region reclaimed water distribution system.			
<b>Reclaimed Water Distribution System</b> Pinellas County   Madeira Beach, FL		2000	2008
(3) BRIEF DESCRIPTION (BRIEF SCOPE, SIZE, COST, ETC.) AND SPECIFIC ROLE [X] Check if project performed with current firm d. Mr. Lee served as project manager. McKim & Creed was contracted by Pinellas County to provide engineering services for the reclaimed water distribution system and potable water line replacements to service the City of Madeira Beach. The project involved completing a hydraulic model of the reclaimed water system, preparing the preliminary engineering report (PER) and providing aerial mapping, surveying, utility locating, final design, construction administration, and inspection services.			
<b>Pinellas County Pollutant Discharge Standards Development</b> Pinellas County, FL		2002	2004
(3) BRIEF DESCRIPTION (BRIEF SCOPE, SIZE, COST, ETC.) AND SPECIFIC ROLE [X] Check if project performed with current firm e. Mr. Lee served a principal-in-charge. McKim & Creed was contracted to perform headworks analyses and develop local discharge standards for conventional, non-conventional, and toxic pollutants for inclusion in the Pinellas County Sewer Use Ordinance. Included in treatment facilities analyses were the 33 mgd South Cross Bayou Water Reclamation and the 9 mgd William E. Dunn Water Reclamation facilities.			

12. NAME	13. ROLE IN THIS CONTRACT	14. YEARS EXPERIENCE	
		a. TOTAL	b. WITH CURRENT FIRM
Tracey Gallentine	Client Liaison	26	1

15. FIRM NAME AND LOCATION (CITY AND STATE)

McKim & Creed | Daytona Beach, FL

16. EDUCATION (DEGREE AND SPECIALIZATION)

B.S., General Engineering

17. CURRENT PROFESSIONAL REGISTRATION (STATE AND DISCIPLINE)

18. OTHER PROFESSIONAL QUALIFICATIONS (PUBLICATIONS, ORGANIZATIONS, TRAINING, AWARDS, ETC.)

Ms. Gallentine has been assisting clients for over 25 years in developing the most efficient and effective engineering solutions for their facilities. She embraces the opportunity to work with owner teams to better define project scope, goals and facilitates collaboration with internal customers to ensure viability and long term project success. As a client liaison with McKim & Creed, Ms. Gallentine is responsible for the overall coordination to ensure that the project is managed accurately and efficiently to owners' satisfaction resulting in the highest standards of service.

**F. RELEVANT PROJECTS**

(1) TITLE AND LOCATION (City and State)		(2) YEAR COMPLETED	
<b>Florida Local Government</b>		PROFESSIONAL SERVICES	CONSTRUCTION (if Applicable)
Miami Beach   Miami Beach, FL		2010	2012
(3) BRIEF DESCRIPTION (BRIEF SCOPE, SIZE, COST, ETC.) AND SPECIFIC ROLE		[ ] Check if project performed with current firm	
a.	Ms. Gallentine worked with the City to develop and define program opportunities for a major infrastructure renewal project encompassing 50 facilities City-wide. This energy conservation and sustainability project encompassed over 50 facilities City-wide and provided annual energy savings of over one million dollars per year. Ms. Gallentine coordinated and presented the program intent to the various executive levels, assisted with contract development and negotiations, and coordinated the transition from development to construction. She was instrumental in assisting the City in the application and award of significant EECBG funds.		
(1) TITLE AND LOCATION (City and State)		(2) YEAR COMPLETED	
<b>Florida State Government</b>		PROFESSIONAL SERVICES	CONSTRUCTION (if Applicable)
Tallahassee   Tallahassee and Jacksonville, FL		2010	2012
(3) BRIEF DESCRIPTION (BRIEF SCOPE, SIZE, COST, ETC.) AND SPECIFIC ROLE		[ ] Check if project performed with current firm	
b.	As the facilitator of the previous State Term Contract (STC) for Energy Conservation Services, Ms. Gallentine worked with the State Agency in the analysis and implementation of energy conservation measures that encompassed 32 buildings in Tallahassee and Jacksonville. Ms. Gallentine was responsible for ensuring customer satisfaction by establishing project management methodology, sales presentations, technical review, budgeting, and resource management. As client liaison, Ms. Gallentine developed and organized a communication plan to all facility regarding the benefits of the program and long term energy solutions.		
(1) TITLE AND LOCATION (City and State)		(2) YEAR COMPLETED	
<b>Florida Local Government</b>		PROFESSIONAL SERVICES	CONSTRUCTION (if Applicable)
City of Tarpon Springs   Tarpon Springs, FL		2012	2013
(3) BRIEF DESCRIPTION (BRIEF SCOPE, SIZE, COST, ETC.) AND SPECIFIC ROLE		[ ] Check if project performed with current firm	
c.	Ms. Gallentine worked with the City to develop and define program opportunities for a City-wide infrastructure renewal project. This energy conservation and sustainability project encompassed over 15 facilities City-wide and provided capital outlay upgrades totaling 1.3M over the course of the project. Ms. Gallentine coordinated and presented the program intent to the City Commission and various executive levels, assisted with contract development and negotiations, and coordinated the transition from development to construction.		
(1) TITLE AND LOCATION (City and State)		(2) YEAR COMPLETED	
<b>Florida Local Government</b>		PROFESSIONAL SERVICES	CONSTRUCTION (if Applicable)
City of West Melbourne   West Melbourne, FL		2011	2013
(3) BRIEF DESCRIPTION (BRIEF SCOPE, SIZE, COST, ETC.) AND SPECIFIC ROLE		[ ] Check if project performed with current firm	
d.	When the City wanted to pursue utilizing EECBG funds as the basis for an infrastructure renewal project, Ms. Gallentine worked with the City to develop and define program opportunities resulting in the highest amount of grant funds awarded to a small City. This energy conservation project encompassed facilities City-wide and provided major capital outlay upgrades including a sustainable geothermal system. Ms. Gallentine was responsible for ensuring customer satisfaction by establishing project management methodology, sales presentations, technical review, budgeting, and resource management.		
(1) TITLE AND LOCATION (City and State)		(2) YEAR COMPLETED	
<b>Florida Local Government</b>		PROFESSIONAL SERVICES	CONSTRUCTION (if Applicable)
Manatee County   Bradenton, FL		2011	2013
(3) BRIEF DESCRIPTION (BRIEF SCOPE, SIZE, COST, ETC.) AND SPECIFIC ROLE		[ ] Check if project performed with current firm	
e.	In the County's effort to improve infrastructure and sustainability initiatives, Ms. Gallentine was instrumental in leading a team in the analysis and implementation of energy conservation measures for the County Correctional Center. Ms. Gallentine was responsible for ensuring customer satisfaction in the development stage by establishing project management methodology, sales presentations, technical review, budgeting, and resource management. As the client liaison, Ms. Gallentine worked with all executive levels in the various departments to ensure a smooth transition to the construction phase.		



12. NAME	13. ROLE IN THIS CONTRACT	14. YEARS EXPERIENCE	
		a. TOTAL	b. WITH CURRENT FIRM
Michael Rogers, PE, HFDP, LEED AP	Mechanical, Plumbing, Fire Protection Engineer	30	2

15. FIRM NAME AND LOCATION (CITY AND STATE)

McKim & Creed | Charlotte, NC

16. EDUCATION (DEGREE AND SPECIALIZATION)

M.S., Mechanical Engineering

B.S., Mechanical Engineering

17. CURRENT PROFESSIONAL REGISTRATION (STATE AND DISCIPLINE)

Professional Engineer: FL# 78734

18. OTHER PROFESSIONAL QUALIFICATIONS (PUBLICATIONS, ORGANIZATIONS, TRAINING, AWARDS, ETC.)

Mr. Rogers is one of only 200 professionals nationwide to receive the Health Care Facility Design Professional certification from the American Society of Healthcare Engineering and the American Society of Heating, Refrigeration and Air-Conditioning Engineers. For 30 years, he has developed cutting-edge processes and effective solutions to clients in local/state, federal, healthcare, higher education, K-12, commercial, and energy and infrastructure markets. In his role as a senior project engineer with McKim & Creed, he provides mechanical, plumbing and fire protection design; seeks opportunities for value engineering; offers analytical and problem-solving expertise; and manages projects, schedules and budgets.

**F. RELEVANT PROJECTS**

(1) TITLE AND LOCATION (City and State)	(2) YEAR COMPLETED	
	PROFESSIONAL SERVICES	CONSTRUCTION (if Applicable)
<b>Lift Station 87 Design and Construction Services</b> City of Sarasota   Sarasota, FL	2014	Ongoing
(3) BRIEF DESCRIPTION (BRIEF SCOPE, SIZE, COST, ETC.) AND SPECIFIC ROLE <span style="float:right">[X] Check if project performed with current firm</span> Mr. Rogers is serving as QA/QC for Lift Station 7 (LS7), which handles approximately one-third of the City of Sarasota's wastewater flow (extreme wet weather flow 9.5 mgd), is at the end of its useful life and has a history of mechanical failures and overflows. To resolve the situation, the city is replacing the aged lift station with a new, state-of-the-art facility (Lift Station 87).		
<b>Pavilion Building Boiler Replacement</b> UF Health   Jacksonville, FL	2017	Ongoing
(3) BRIEF DESCRIPTION (BRIEF SCOPE, SIZE, COST, ETC.) AND SPECIFIC ROLE <span style="float:right">[X] Check if project performed with current firm</span> Mr. Rogers served as the project manager to replace a 600 BHP boiler and a 200 BHP replacing the deaerator tank and surge tank, replacing the boiler feed pumps and transfer pumps, replacing the fuel oil pumps, and replacing the boiler blowdown separator.		
<b>UNC Chapel Hill Kenan Fire Safety and Laboratory Upgrades</b> The University of North Carolina at Chapel Hill   Chapel Hill, NC	2014	2017
(3) BRIEF DESCRIPTION (BRIEF SCOPE, SIZE, COST, ETC.) AND SPECIFIC ROLE <span style="float:right">[X] Check if project performed with current firm</span> Mr. Rogers served as QA/QC for this project to up-fit the modern building automation control system, modify the existing lab/office HVAC equipment, and re-commission the facility as part of UNC's initiative to implement energy conservation measures at the 41-year-old Kenan Lab. Replacing the constant flow terminal boxes with new DDC variable flow boxes allows greater HVAC control and monitoring and reduces energy consumption. The payback period is anticipated to be less than 10 years.		
<b>Bryan Building Air Handling Unit Replacement</b> The University of North Carolina at Greensboro   Greensboro, NC	2016	Ongoing
(3) BRIEF DESCRIPTION (BRIEF SCOPE, SIZE, COST, ETC.) AND SPECIFIC ROLE <span style="float:right">[X] Check if project performed with current firm</span> Mr. Rogers is serving as senior project engineer to replace Air Handling Unit #3 for the Bryan Building at UNCG. The scope of this project includes the complete replacement of Air Handling Unit #3 that serves the existing auditorium in the building. McKim & Creed provided load calculations to verify unit sizing, conducted meetings with UNCG staff to review and address controls strategies (in particular humidity control), and provided detailed air handling unit selections to ensure the dimensions of the air handling unit fit the space available while providing space needed for future maintenance and access.		
<b>Duke Energy Roxboro Warehouse C</b> Bowen Engineering   Semora, NC	2016	Ongoing
(3) BRIEF DESCRIPTION (BRIEF SCOPE, SIZE, COST, ETC.) AND SPECIFIC ROLE <span style="float:right">[X] Check if project performed with current firm</span> Mr. Rogers is serving as project engineer. McKim & Creed is providing civil, electrical and mechanical design services. The mechanical design scope includes preparation of technical data as well as design services for the HVAC Floor Plan, HVAC Schedules, HVAC Sections and Details, Plumbing and Floor Drain Plan and Installation Details, Sanitary Lift Station Sizing and Performance Specification, and FEMA Class 3 Rated Safe Room for Base Bid and FEMA Class 1 Rated Safe Room for Alternative 1 for the Warehouse C, Breakroom.		

**E. RESUMES OF KEY PERSONNEL PROPOSED FOR THIS CONTRACT**  
(Complete one Section E for each key person.)

12. NAME	13. ROLE IN THIS CONTRACT	14. YEARS EXPERIENCE	
		a. TOTAL	b. WITH CURRENT FIRM
		31	5

15. FIRM NAME AND LOCATION (CITY AND STATE)

McKim &amp; Creed | Asheville, NC

16. EDUCATION (DEGREE AND SPECIALIZATION)

B.S., Mechanical Engineering

B.S., Environmental Health

17. CURRENT PROFESSIONAL REGISTRATION (STATE AND DISCIPLINE)

18. OTHER PROFESSIONAL QUALIFICATIONS (PUBLICATIONS, ORGANIZATIONS, TRAINING, AWARDS, ETC.)

Mr. Cooper brings over 30 years of experience with professional assignments in consultation and design of mechanical systems, fire protection systems, construction and air pollution regulation development; project management, preparation of specifications, cost estimating and construction administration for university, commercial, industrial, manufacturing, military, health care, retail and multifamily facilities. His area of special expertise is facility system design which includes chillers, boilers, energy management, air distribution, pumping, high and low temperature air and water systems, heat exchangers, pneumatic and electronic controls, filtration, piping, and ventilation.

**F. RELEVANT PROJECTS**

(1) TITLE AND LOCATION (City and State)	(2) YEAR COMPLETED	
	PROFESSIONAL SERVICES	CONSTRUCTION (if Applicable)
	2016	Ongoing
<b>Jacksonville Boiler Replacement</b> UF Health   Jacksonville, FL		
(3) BRIEF DESCRIPTION (BRIEF SCOPE, SIZE, COST, ETC.) AND SPECIFIC ROLE [X] Check if project performed with current firm a. Mr. Cooper is serving as project manager. When UF Health (UFH) at Jacksonville needed to upgrade their new boiler system they partnered with local award-winning engineering firm McKim & Creed to prepare mechanical design drawings and specifications to replace one existing steam boiler in its present location. This new boiler was designed to equal the capacity of the existing system and will connect to the existing steam, controls, feedwater, stack, and BAS systems. New domestic water and steam chemical treatment systems were also replaced. Our engineers worked with various vendors recommended by UFH to complete this successful project.		
(1) TITLE AND LOCATION (City and State)	(2) YEAR COMPLETED	
	PROFESSIONAL SERVICES	CONSTRUCTION (if Applicable)
	2017	Ongoing
<b>Pavillion Domestic Hot Water Study</b> UF Health   Jacksonville, FL		
(3) BRIEF DESCRIPTION (BRIEF SCOPE, SIZE, COST, ETC.) AND SPECIFIC ROLE [X] Check if project performed with current firm b. Mr. Cooper is serving as project manager to develop a strategy and survey domestic hot water system(s) for compliance with AHCA requirements. Field work included physical survey of domestic hot water appliances, findings, remediation and issued final report to for AHCA review. The root cause of poor DHW was leaking tempering valves at OR hand wash sinks.		
(1) TITLE AND LOCATION (City and State)	(2) YEAR COMPLETED	
	PROFESSIONAL SERVICES	CONSTRUCTION (if Applicable)
	2015	Ongoing
<b>Air Handling Unit (AHU) Coil Performance</b> UF Health   Jacksonville, FL		
(3) BRIEF DESCRIPTION (BRIEF SCOPE, SIZE, COST, ETC.) AND SPECIFIC ROLE [X] Check if project performed with current firm c. Mr. Cooper is serving as project manager to review the chiller feasibility studies and made recommendations to UF Health.		
(1) TITLE AND LOCATION (City and State)	(2) YEAR COMPLETED	
	PROFESSIONAL SERVICES	CONSTRUCTION (if Applicable)
	2017	Ongoing
<b>Kitchen Ventilation Construction Administration</b> UF Health   Jacksonville, FL		
(3) BRIEF DESCRIPTION (BRIEF SCOPE, SIZE, COST, ETC.) AND SPECIFIC ROLE [X] Check if project performed with current firm d. Mr. Cooper is supervising mechanical and electrical design services for the kitchen pressurization at UF Jacksonville Hospital. He completed a final review of mechanical and electrical design drawings and specifications to improve the ventilation of the UF Health/Jacksonville kitchen.		
(1) TITLE AND LOCATION (City and State)	(2) YEAR COMPLETED	
	PROFESSIONAL SERVICES	CONSTRUCTION (if Applicable)
	2013	Ongoing
<b>Sports Field Lighting</b> The University of North Carolina at Asheville   Asheville, NC		
(3) BRIEF DESCRIPTION (BRIEF SCOPE, SIZE, COST, ETC.) AND SPECIFIC ROLE [X] Check if project performed with current firm e. Mr. Cooper is serving as project manager and oversaw the project including SCO approved construction documents that detailed design of the soccer and baseball field lighting.		

**E. RESUMES OF KEY PERSONNEL PROPOSED FOR THIS CONTRACT**  
(Complete one Section E for each key person.)

12. NAME	13. ROLE IN THIS CONTRACT	14. YEARS EXPERIENCE	
		a. TOTAL	b. WITH CURRENT FIRM
		14	1

15. FIRM NAME AND LOCATION (CITY AND STATE)

McKim &amp; Creed | Asheville, NC

16. EDUCATION (DEGREE AND SPECIALIZATION)

B.S., Electrical Engineering

17. CURRENT PROFESSIONAL REGISTRATION (STATE AND DISCIPLINE)

Professional Engineer: FL#84017

18. OTHER PROFESSIONAL QUALIFICATIONS (PUBLICATIONS, ORGANIZATIONS, TRAINING, AWARDS, ETC.)

Mr. Bettac offers his clients extensive experience in power distribution at multiple voltage levels; lighting design (including lighting calculations and control systems); fire alarm system design; lightning protection systems; resilient lighting (ranging from generators to LEED-accredited buildings); and data, telecom and security system design (from conduit and draglines to security kiosks). He understands local, state and federal design standards and regulations, and has effectively led collaborative teams on multi-discipline projects as well as provided technical expertise for design computations and technical evaluations within electrical engineering.

**F. RELEVANT PROJECTS**

(1) TITLE AND LOCATION (City and State)	(2) YEAR COMPLETED	
	PROFESSIONAL SERVICES	CONSTRUCTION (if Applicable)
	2017	Ongoing
<b>Pavilion Building Boiler Replacement</b> UF Health   Jacksonville, FL	[X] Check if project performed with current firm	
	Mr. Bettac is serving as the electrical project engineer for the replacement of a 600 BHP boiler and a 200 BHP, replacing the deaerator tank and surge tank, replacing the boiler feed pumps and transfer pumps, replacing the fuel oil pumps, and replacing the boiler blowdown separator.	
<b>Kenan Laboratories Floors 3-9 Fire Sprinklers</b> The University of North Carolina at Chapel Hill   Chapel Hill, NC	[X] Check if project performed with current firm	
	Mr. Bettac is serving as the electrical engineer, providing electrical engineering design to install fire and smoke dampers at two vertical mechanical shafts. The shaft walls are structural shear walls and the building remained occupied, therefore the upgrade required significant planning, and design to implement the installation of smoke and fire dampers on every level in both shafts.	
<b>Science and Technology Building Restroom Renovation</b> Fayetteville State University   Fayetteville, NC	[X] Check if project performed with current firm	
	Mr. Bettac is serving as electrical project engineer for the electrical modifications associated with converting an existing unisex toilet room and adjacent office space into single enlarged toilet room. Plumbing design included domestic water and gravity piping calculations, fixture scheduling and pipe sizing. Mechanical design included modifications to existing exhaust and supply air based off additional fixture(s).	
<b>Science and Technology Building Restroom Renovation</b> Fayetteville State University   Fayetteville, NC	[X] Check if project performed with current firm	
	Mr. Bettac is serving as project engineer for the electrical modifications associated with converting an existing unisex toilet room and adjacent office space into single enlarged toilet room. Plumbing design included domestic water and gravity piping calculations, fixture scheduling and pipe sizing. Mechanical design included modifications to existing exhaust and supply air based off additional fixture(s).	
<b>Sports Field Lighting</b> The University of North Carolina at Asheville   Asheville, NC	[X] Check if project performed with current firm	
	Mr. Bettac is serving as electrical engineer to provide ventilation work connected with a BayCare Health System facility generator.	



**E. RESUMES OF KEY PERSONNEL PROPOSED FOR THIS CONTRACT**  
(Complete one Section E for each key person.)

12. NAME	13. ROLE IN THIS CONTRACT	14. YEARS EXPERIENCE	
		a. TOTAL	b. WITH CURRENT FIRM
		21	4

15. FIRM NAME AND LOCATION (CITY AND STATE)

McKim &amp; Creed | Clearwater, FL

16. EDUCATION (DEGREE AND SPECIALIZATION)

B.S., Electrical Engineering

17. CURRENT PROFESSIONAL REGISTRATION (STATE AND DISCIPLINE)

Professional Engineer: FL#66861

18. OTHER PROFESSIONAL QUALIFICATIONS (PUBLICATIONS, ORGANIZATIONS, TRAINING, AWARDS, ETC.)

Mr. Haudricourt has experience in both electrical and instrumentation engineering. He has designed and overseen the installation of power generation, controls systems and lighting for large facilities. He has also been involved in security assessment and security design; and has over 21 years of experience in other construction related fields.

**F. RELEVANT PROJECTS**

(1) TITLE AND LOCATION (City and State)	(2) YEAR COMPLETED	
	PROFESSIONAL SERVICES	CONSTRUCTION (if Applicable)
	2014	Ongoing
<b>Lift Station 87 Design and Construction Services</b> City of Sarasota   Sarasota, FL		
(3) BRIEF DESCRIPTION (BRIEF SCOPE, SIZE, COST, ETC.) AND SPECIFIC ROLE [X] Check if project performed with current firm a. Mr. Haudricourt is serving as the electrical engineer, providing electrical engineering design to install fire and smoke dampers at two vertical mechanical shafts. The shaft walls are structural shear walls and the building remained occupied, therefore the upgrade required significant planning, and design to implement the installation of smoke and fire dampers on every level in both shafts. Transfer of gravity flows from LS7 to Lift Station 87 (LS87) requires microtunneling under an environmentally sensitive waterway, the Hudson Bayou, and beneath the historical Hudson Bayou Bridge, constructed in 1914.		
(1) TITLE AND LOCATION (City and State)	(2) YEAR COMPLETED	
	PROFESSIONAL SERVICES	CONSTRUCTION (if Applicable)
	2014	2018
<b>Water Treatment Plant Biological Treatment Unit</b> Manatee County   Bradenton, FL		
(3) BRIEF DESCRIPTION (BRIEF SCOPE, SIZE, COST, ETC.) AND SPECIFIC ROLE [X] Check if project performed with current firm b. Mr. Haudricourt provided electrical engineering services involved in the design and construction phase services needed for the WTP Biological Treatment Unit (BTU). Specific components of the project included construction of six new BTUs, new filter backwash pumping system, new filter backwash air scour system, backwash clearwell structure, new filter building for housing new treatment units (including electrical room), installation of new raw water flow meters and modulating valves, instrumentation and control systems, electrical systems, new process and yard piping, connections to existing rapid mix basins, new BTU backwash pond, new on-site lift station, approximately 13,000 LF of 6-inch forcemain, integration of the BTU control system into the LMWTP's existing SCADA system and integration of the existing emergency power system into the BTU process.		
(1) TITLE AND LOCATION (City and State)	(2) YEAR COMPLETED	
	PROFESSIONAL SERVICES	CONSTRUCTION (if Applicable)
	2014	2015
<b>Marshall Street Laboratory and East APCF Generator Improvement</b> City of Clearwater   Clearwater, FL		
(3) BRIEF DESCRIPTION (BRIEF SCOPE, SIZE, COST, ETC.) AND SPECIFIC ROLE [X] Check if project performed with current firm c. Mr. Haudricourt served as project manager for this project. He oversaw bidding, construction management and observation services related to the standby generator power at the East Water Reclamation Facility (WRF) and Marshall Street WRF Laboratory.		
(1) TITLE AND LOCATION (City and State)	(2) YEAR COMPLETED	
	PROFESSIONAL SERVICES	CONSTRUCTION (if Applicable)
	2014	Ongoing
<b>As Needed Services</b> City of Hollywood   Hollywood, FL		
(3) BRIEF DESCRIPTION (BRIEF SCOPE, SIZE, COST, ETC.) AND SPECIFIC ROLE [X] Check if project performed with current firm d. Mr. Haudricourt is serving as project manager for the design and construction of a 5 mgd deep injection well and booster pump station for the disposal of RO concentrate and wastewater effluent for the City of Hollywood.		
(1) TITLE AND LOCATION (City and State)	(2) YEAR COMPLETED	
	PROFESSIONAL SERVICES	CONSTRUCTION (if Applicable)
	2018	Ongoing
<b>Marshall Street/East WRF Basins I/I Permanent Flow Monitoring</b> City of Clearwater   Clearwater, FL		
(3) BRIEF DESCRIPTION (BRIEF SCOPE, SIZE, COST, ETC.) AND SPECIFIC ROLE [X] Check if project performed with current firm e. Mr. Haudricourt is serving as project manager. The City of Clearwater requested that McKim & Creed provide permanent flow monitoring and rainfall gauging services for the Marshall Street and East WRF sewer collection system. Flow monitoring was conducted at six major gravity sewer outfall and six major lift station locations to record wastewater volumes.		

**E. RESUMES OF KEY PERSONNEL PROPOSED FOR THIS CONTRACT**  
(Complete one Section E for each key person.)

12. NAME	13. ROLE IN THIS CONTRACT	14. YEARS EXPERIENCE	
		a. TOTAL	b. WITH CURRENT FIRM
		3	3

15. FIRM NAME AND LOCATION (CITY AND STATE)

McKim &amp; Creed | Clearwater, FL

16. EDUCATION (DEGREE AND SPECIALIZATION)

B.S., Electrical Engineering

17. CURRENT PROFESSIONAL REGISTRATION (STATE AND DISCIPLINE)

Engineer Intern: FL#1100020074

18. OTHER PROFESSIONAL QUALIFICATIONS (PUBLICATIONS, ORGANIZATIONS, TRAINING, AWARDS, ETC.)

Ms. Smith's experience has been in design of power distribution systems, such as generators, medium and low voltage switchgear, motor control centers, and single and three-phase panel boards. She has experience performing voltage drop calculations, and expected load calculations including three-phase current vector plotting. Ms. Smith has experience performing cost-benefit analysis on the addition of variable frequency drives to an existing raw water pump site. She is also experienced in the design and selection of both indoor and site lighting. Her experience includes work on both new installations and upgrades to existing equipment and facilities. Ms. Smith is highly skilled in the use of CAD, Excel and MathCAD based tools for both design and analysis.

**F. RELEVANT PROJECTS**

	(1) TITLE AND LOCATION (City and State)	(2) YEAR COMPLETED	
		PROFESSIONAL SERVICES	CONSTRUCTION (if Applicable)
		2014	Ongoing
a.	<b>Lift Station 87 Design and Construction Services</b> City of Sarasota   Sarasota, FL (3) BRIEF DESCRIPTION (BRIEF SCOPE, SIZE, COST, ETC.) AND SPECIFIC ROLE [X] Check if project performed with current firm Ms. Smith is serving as electrical designer for Lift Station 7 (LS7), which handles approximately one-third of the City of Sarasota's wastewater flow (extreme wet weather flow 9.5 mgd), is at the end of its useful life and has a history of mechanical failures and overflows. To resolve the situation, the city replaced the aged lift station with a new, state-of-the-art facility (LS87). Transfer of gravity flows from LS7 to LS87 requires microtunneling under an environmentally sensitive waterway, the Hudson Bayou, and beneath the historical Hudson Bayou Bridge, constructed in 1914.		
b.	<b>SEWRF 10 MG Storage Tank and High Service Pumps</b> Manatee County   Bradenton, FL (3) BRIEF DESCRIPTION (BRIEF SCOPE, SIZE, COST, ETC.) AND SPECIFIC ROLE [X] Check if project performed with current firm Ms. Smith served as engineer intern and assisted with set up an independent low service (low pressure) system at the SEWRF to distribute effluent from the CCCs to the storage ponds. This effort was implemented to improve MCMRS reliability during facility upset conditions and reduce power consumption of the facility to bring down operating costs. The project included installation of new 10 mg GST, high service RCW pumping system, electrical and SCADA system components.	2013	2017
c.	<b>Water Treatment Plant Biological Treatment Unit</b> Manatee County   Bradenton, FL (3) BRIEF DESCRIPTION (BRIEF SCOPE, SIZE, COST, ETC.) AND SPECIFIC ROLE [X] Check if project performed with current firm Ms. Smith served as engineer intern. McKim & Creed provided engineering services for the design, permitting, bidding, and construction phase services needed for the WTP Biological Treatment Unit (BTU). Specific components included electrical distribution and control system for six new BTUs, filter backwash pumping system, filter backwash air scour system, filter building for housing the treatment units.	2014	2018
d.	<b>WTP #1 Generator Replacement and Electrical Upgrades</b> City of Palm Coast   Palm Coast, FL (3) BRIEF DESCRIPTION (BRIEF SCOPE, SIZE, COST, ETC.) AND SPECIFIC ROLE [X] Check if project performed with current firm Ms. Smith is serving as engineer intern. McKim & Creed provided engineering design, bidding and construction services for upgrades to the electrical equipment for three low-flow capacity pumps at the City of Palm Coast's Water Treatment Plant No. 1. The project upgraded the three pump feeds from 240V to 480V.	2017	Ongoing
e.	<b>Plantation Bay Wastewater Treatment Facility (WWTF) Improvements Preliminary Engineering //</b> Flagler County   Bunnell, FL (3) BRIEF DESCRIPTION (BRIEF SCOPE, SIZE, COST, ETC.) AND SPECIFIC ROLE [X] Check if project performed with current firm Ms. Smith is serving as engineer intern. McKim & Creed is providing professional engineering services for the preparation of a State Revolving Fund document, preliminary engineering for the improvements, FDEP permitting, and final design services for the reject storage facilities.	2014	2018

**E. RESUMES OF KEY PERSONNEL PROPOSED FOR THIS CONTRACT**  
(Complete one Section E for each key person.)

12. NAME	13. ROLE IN THIS CONTRACT	14. YEARS EXPERIENCE	
		a. TOTAL	b. WITH CURRENT FIRM
		37	4

15. FIRM NAME AND LOCATION (CITY AND STATE)

McKim &amp; Creed | Daytona Beach, FL

16. EDUCATION (DEGREE AND SPECIALIZATION)

B.S., Civil Engineering

17. CURRENT PROFESSIONAL REGISTRATION (STATE AND DISCIPLINE)

Professional Engineer: FL#41841

LEED Accredited Professional

18. OTHER PROFESSIONAL QUALIFICATIONS (PUBLICATIONS, ORGANIZATIONS, TRAINING, AWARDS, ETC.)

Mr. Burkett brings over three decades of experience to the McKim & Creed team. He is a diverse engineer who focuses on cost-effective solutions while meeting the needs of each client. His management strengths lie in the ability to foster team work and keep projects on task and within client budgets. His technical skills are strongly based in roadway designs and stormwater management. He has performed stormwater design work on projects ranging from small design and retrofit projects to major basin watershed studies. He is an implementation type of engineer who brings real world solutions to project designs that are cost effective and constructable. He has a strong permitting knowledge that relates to over 30 years of permitting within the State of Florida environment. He is also LEED accredited and familiar with the latest in Low Impact Development strategies.

**F. RELEVANT PROJECTS**

(1) TITLE AND LOCATION (City and State)	(2) YEAR COMPLETED	
	PROFESSIONAL SERVICES	CONSTRUCTION (if Applicable)
	2018	Ongoing

**WWRF Operations Building and Hardening of Biosolids Building**  
City of Largo | Largo, FL

a. (3) BRIEF DESCRIPTION (BRIEF SCOPE, SIZE, COST, ETC.) AND SPECIFIC ROLE [X] Check if project performed with current firm  
Mr. Burkett is serving as civil engineer to help construct a new Operations Building (OB) at the City's 18 mgd Wastewater Reclamation Facility (WWRF). The scope of work includes preliminary and final design, SUE and survey, geotechnical, permitting and construction phase services for the OB, which is designed with an elevation to allow it to remain operational during a Category 4 hurricane and associated storm surge.

(1) TITLE AND LOCATION (City and State)	(2) YEAR COMPLETED	
	PROFESSIONAL SERVICES	CONSTRUCTION (if Applicable)
	2014	Ongoing

**Lift Station 87 Design and Construction Services**  
City of Sarasota | Sarasota, FL

b. (3) BRIEF DESCRIPTION (BRIEF SCOPE, SIZE, COST, ETC.) AND SPECIFIC ROLE [X] Check if project performed with current firm  
Mr. Burkett is serving as lead civil engineer for Lift Station 7 (LS7), which handles approximately one-third of the City of Sarasota's wastewater flow (extreme wet weather flow 9.5 mgd), is at the end of its useful life and has a history of mechanical failures and overflows. To resolve the situation, the city replaced the aged lift station with a new, state-of-the-art facility (LS87). Transfer of gravity flows from LS7 to LS87 requires microtunneling under an environmentally sensitive waterway, the Hudson Bayou, and beneath the historical Hudson Bayou Bridge, constructed in 1914.

(1) TITLE AND LOCATION (City and State)	(2) YEAR COMPLETED	
	PROFESSIONAL SERVICES	CONSTRUCTION (if Applicable)
	2014	2018

**Manatee County Water Treatment Plant Biological Treatment Unit**  
Manatee County | Bradenton, FL

c. (3) BRIEF DESCRIPTION (BRIEF SCOPE, SIZE, COST, ETC.) AND SPECIFIC ROLE [X] Check if project performed with current firm  
Mr. Burkett performed civil engineering tasks for site improvements related to this design and construction project.

(1) TITLE AND LOCATION (City and State)	(2) YEAR COMPLETED	
	PROFESSIONAL SERVICES	CONSTRUCTION (if Applicable)
	2014	2018

**Pembroke Pines Large User Group Agreement**  
The City of Pembroke Pines | Pembroke Pines, FL

d. (3) BRIEF DESCRIPTION (BRIEF SCOPE, SIZE, COST, ETC.) AND SPECIFIC ROLE [X] Check if project performed with current firm  
Mr. Burkett served as a project engineer and provided the city of Pembroke Pines with a business case analysis for wastewater system planning that relates to the future ocean outfall legislation compliance. Through the duration of the project McKim & Creed planned meetings, collected data, analyzed data collected data and proposed options to the city of Pembroke Pines.

(1) TITLE AND LOCATION (City and State)	(2) YEAR COMPLETED	
	PROFESSIONAL SERVICES	CONSTRUCTION (if Applicable)
	2014	2018

**Plantation Bay Wastewater Treatment Facility (WWTF) Improvements Preliminary Engineering //** Flagler County | Bunnell, FL

e. (3) BRIEF DESCRIPTION (BRIEF SCOPE, SIZE, COST, ETC.) AND SPECIFIC ROLE [X] Check if project performed with current firm  
Mr. Burkett served as a project manager, providing professional engineering services for the preparation of a State Revolving Fund (SRF) document, preliminary engineering documents of PBWWTF improvements, FDEP operation permitting, and final design services for the reject storage facilities. McKim & Creed coordinated with the county to obtain available information to assist with the development of the SRF Planning Document. Narratives, sketches, cost estimates and calculations as required for the SRF Planning Document were provided.

**E. RESUMES OF KEY PERSONNEL PROPOSED FOR THIS CONTRACT**  
(Complete one Section E for each key person.)

12. NAME	13. ROLE IN THIS CONTRACT	14. YEARS EXPERIENCE	
		a. TOTAL	b. WITH CURRENT FIRM
Matthew Daves, PE, LEED AP, CBCP	Senior Project Manager & Lead Mechanical Engineer	17	5

15. FIRM NAME AND LOCATION (CITY AND STATE)

McKim &amp; Creed | Raleigh, NC

16. EDUCATION (DEGREE AND SPECIALIZATION)

B.S., Mechanical Engineering

17. CURRENT PROFESSIONAL REGISTRATION (STATE AND DISCIPLINE)

Professional Engineer: FL#76800; LEED Accredited Professional; Certified Building Commissioning Professional

18. OTHER PROFESSIONAL QUALIFICATIONS (PUBLICATIONS, ORGANIZATIONS, TRAINING, AWARDS, ETC.)

Mr. Daves has 17 years of experience and has completed professional assignments in project management and mechanical design for many commercial, institutional and industrial clients, along with state and local governments. Mr. Daves is an Association of Energy Engineers Certified Building Commissioning Professional, as well as a LEED Accredited design professional.

**F. RELEVANT PROJECTS**

	(1) TITLE AND LOCATION (City and State)	(2) YEAR COMPLETED	
		PROFESSIONAL SERVICES	CONSTRUCTION (if Applicable)
a.	<b>UF Health Steam Pressure Reducing Valve (PRV) Relocation</b> UF Health   Jacksonville, FL	2014	Ongoing
	(3) BRIEF DESCRIPTION (BRIEF SCOPE, SIZE, COST, ETC.) AND SPECIFIC ROLE [X] Check if project performed with current firm Mr. Daves is serving as mechanical engineer to provide mechanical and plumbing design and construction administration services for the relocation of four steam pressure reducing valves stations. The project involves site surveys to confirm existing conditions, vendor research to document the flow characteristics of old equipment, modifying existing steam piping systems to accommodate the new locations and construction administration observations to confirm the construction documents are being followed and to provide advice as needed.		
b.	<b>Lift Station 87 Design and Construction Services</b> City of Sarasota   Sarasota, FL	2014	Ongoing
	(3) BRIEF DESCRIPTION (BRIEF SCOPE, SIZE, COST, ETC.) AND SPECIFIC ROLE [X] Check if project performed with current firm Mr. Daves is providing professional engineering services Lift Station 7 (LS7), which handles approximately one-third of the City of Sarasota's wastewater flow (extreme wet weather flow 9.5 mgd), is at the end of its useful life and has a history of mechanical failures and overflows. To resolve the situation, the city is replacing the aged lift station with a new, state-of-the-art facility (Lift Station 87 (LS87)). Transfer of gravity flows from LS7 to LS87 requires microtunneling under an environmentally sensitive waterway, the Hudson Bayou, and beneath the historical Hudson Bayou Bridge, constructed in 1914.		
c.	<b>USPS Processing and Distribution Center</b> United State Postal Service   Fayetteville, NC	2009	2011
	(3) BRIEF DESCRIPTION (BRIEF SCOPE, SIZE, COST, ETC.) AND SPECIFIC ROLE [X] Check if project performed with current firm Mr. Daves served as project manager for replacement of most of the HVAC systems associated with this approximately 100,000 SF mail processing facility to provide an upgraded system with energy savings, which were a key part of the project. Mechanical system upgrades included new high efficiency condensing boilers, variable volume hot water pumping, new variable volume single zone and multi-zone air handling units, and new DDC controls system and front end. The project team created the energy models for the original system's energy consumption and compared it with the new systems that were designed and now installed and operating. The team used previous years' billings to tune and validate the model to produce results. The team also performed measurement and verification of the predicted savings.		
d.	<b>Old Revenue Building Mechanical Improvements</b> North Carolina Department of Administration   Raleigh, NC	2014	2014
	(3) BRIEF DESCRIPTION (BRIEF SCOPE, SIZE, COST, ETC.) AND SPECIFIC ROLE [X] Check if project performed with current firm Mr. Daves served as project manager and lead mechanical engineer for the mechanical improvements to the Old Revenue Building for the Department of Administration. Scope included the replacement of 11 air handling units (AHU) and associated HVAC controls. The air handling units at the Old Revenue Building were over 25 years old and problematic, requiring constant repairs. McKim & Creed also replaced a steam condensate station and provided new dedicated, precision cooling for the Secretary of State server room.		
e.	<b>Watauga Residence Hall HVAC and Chiller Replacement</b> North Carolina State University   Raleigh, NC	2013	2014
	(3) BRIEF DESCRIPTION (BRIEF SCOPE, SIZE, COST, ETC.) AND SPECIFIC ROLE [X] Check if project performed with current firm Mr. Daves served as project manager and lead mechanical engineer to replace the HVAC and chiller at Watauga Residence Hall.		

**E. RESUMES OF KEY PERSONNEL PROPOSED FOR THIS CONTRACT**  
(Complete one Section E for each key person.)

12. NAME	13. ROLE IN THIS CONTRACT	14. YEARS EXPERIENCE	
		a. TOTAL	b. WITH CURRENT FIRM
		23	12

15. FIRM NAME AND LOCATION (CITY AND STATE)

McKim &amp; Creed | Clearwater, FL

16. EDUCATION (DEGREE AND SPECIALIZATION)

B.S., Civil Engineering

17. CURRENT PROFESSIONAL REGISTRATION (STATE AND DISCIPLINE)

Professional Engineer: FL#57527

18. OTHER PROFESSIONAL QUALIFICATIONS (PUBLICATIONS, ORGANIZATIONS, TRAINING, AWARDS, ETC.)

Mr. Locke offers decades of experience in the planning, design, permitting and construction management of water treatment, and wastewater and reclaimed water treatment plants. His water treatment experience includes conventional, reverse osmosis, lime softening and ion exchange facilities; and his wastewater treatment and reclaimed water experience includes chemical storage and feed facilities, transmission systems and other associated infrastructure.

**F. RELEVANT PROJECTS**

	(1) TITLE AND LOCATION (City and State)	(2) YEAR COMPLETED	
		PROFESSIONAL SERVICES	CONSTRUCTION (if Applicable)
		2018	Ongoing
a.	<b>WWRF Operations Building and Hardening of Biosolids Building</b> City of Largo   Largo, FL (3) BRIEF DESCRIPTION (BRIEF SCOPE, SIZE, COST, ETC.) AND SPECIFIC ROLE [X] Check if project performed with current firm Mr. Locke is serving as project manager to design and construct a new Operations Building (OB) at the City's 18 mgd Wastewater Reclamation Facility (WWRF). The scope of work includes preliminary and final design, SUE and survey, geotechnical, permitting and construction phase services for the OB, which is designed with an elevation to allow it to remain operational during a Category 4 hurricane and associated storm surge.		
b.	(1) TITLE AND LOCATION (City and State)	(2) YEAR COMPLETED	
	<b>Lift Station 87 Design and Construction Services</b>	PROFESSIONAL SERVICES	CONSTRUCTION (if Applicable)
	City of Sarasota   Sarasota, FL	2014	Ongoing
c.	(3) BRIEF DESCRIPTION (BRIEF SCOPE, SIZE, COST, ETC.) AND SPECIFIC ROLE [X] Check if project performed with current firm Mr. Locke is serving as senior project manager on Lift Station 7 (LS7), which handles approximately one-third of the City of Sarasota's wastewater flow (extreme wet weather flow 9.5 mgd), is at the end of its useful life and has a history of mechanical failures and overflows. To resolve the situation, the city is replacing the aged lift station with a new, state-of-the-art facility (Lift Station 87 (LS87)). Transfer of gravity flows from LS7 to LS87 requires microtunneling under an environmentally sensitive waterway, the Hudson Bayou, and beneath the historical Hudson Bayou Bridge, constructed in 1914.		
	(1) TITLE AND LOCATION (City and State)	(2) YEAR COMPLETED	
	<b>Lake Manatee Water Treatment Plant Pilot Study</b>	PROFESSIONAL SERVICES	CONSTRUCTION (if Applicable)
d.	Manatee County   Bradenton, FL	2007	2009
	(3) BRIEF DESCRIPTION (BRIEF SCOPE, SIZE, COST, ETC.) AND SPECIFIC ROLE [X] Check if project performed with current firm Mr. Locke served as project manager. The detailed plan and protocol for completion of the pilot study addressed the design criteria for the treatment system and bench-scale tests, the water-quality parameters to be analyzed, the frequency of the analyses, the start-up/shut-down/cleaning procedures, and the various side-stream bench-scale tests associated with the overall program.		
	(1) TITLE AND LOCATION (City and State)	(2) YEAR COMPLETED	
e.	<b>Lena Road Landfill Architectural Building Design</b>	PROFESSIONAL SERVICES	CONSTRUCTION (if Applicable)
	Manatee County   Bradenton, FL	2006	2008
	(3) BRIEF DESCRIPTION (BRIEF SCOPE, SIZE, COST, ETC.) AND SPECIFIC ROLE [X] Check if project performed with current firm Mr. Locke served as project manager for the design, permitting, bidding, and construction phases for four new buildings at the Lena Road Landfill Facilities. McKim & Creed developed a project specific Project Management Plan (PMP) tailored for the project to ensure that needs were identified, clearly understood and communicated to the entire project team. These buildings included: an 8,432 SF Equipment Maintenance Building designed for maintenance and repair for the County's vehicle and equipment fleet; a 21,870 SF Community Drop-Off Building designed for the drop-off and temporary storage of household hazardous materials; a 3,036 SF Administration Building that houses the Landfill management and administrative staff; and a 2,911 SF Operations Building to serve the Landfill operations staff.		
	(1) TITLE AND LOCATION (City and State)	(2) YEAR COMPLETED	
	<b>Marshall St. Influent Emergency Structure Repairs</b>	PROFESSIONAL SERVICES	CONSTRUCTION (if Applicable)
	City of Clearwater   Clearwater, FL	2016	2017
	(3) BRIEF DESCRIPTION (BRIEF SCOPE, SIZE, COST, ETC.) AND SPECIFIC ROLE [X] Check if project performed with current firm Mr. Locke served as senior project manager to help design and assist the construction of a temporary pumping system to replace the 10 mgd influent pump station that was flooded and rendered inoperable; and designed repairs for the electrical and control systems to rehabilitate the pump station for a 30 mgd capacity.		



**E. RESUMES OF KEY PERSONNEL PROPOSED FOR THIS CONTRACT**  
(Complete one Section E for each key person.)

12. NAME	13. ROLE IN THIS CONTRACT	14. YEARS EXPERIENCE	
		a. TOTAL	b. WITH CURRENT FIRM
		26	3

15. FIRM NAME AND LOCATION (CITY AND STATE)

McKim &amp; Creed | Raleigh, NC

16. EDUCATION (DEGREE AND SPECIALIZATION)

B.S., Mechanical Engineering

17. CURRENT PROFESSIONAL REGISTRATION (STATE AND DISCIPLINE)

Professional Engineer: NC#028630

18. OTHER PROFESSIONAL QUALIFICATIONS (PUBLICATIONS, ORGANIZATIONS, TRAINING, AWARDS, ETC.)

Mr. Martin leads McKim & Creed's energy efficiency services, including a focus on improving efficiency through building operation and maintenance practices. He is a leader in the field of energy conservation focusing on strategies that benefit occupants, maintenance and energy consumption. With over 20 years experience in facilities management, he brings expertise in building teams focused on objective system analysis, problem solving and providing effective solutions.

**F. RELEVANT PROJECTS**

	(1) TITLE AND LOCATION (City and State)	(2) YEAR COMPLETED	
		PROFESSIONAL SERVICES	CONSTRUCTION (if Applicable)
		2014	2017
a.	<b>Genetic Medicine Laboratory Controls Modifications</b> The University of North Carolina at Chapel Hill (UNC-CH)   Chapel Hill, NC (3) BRIEF DESCRIPTION (BRIEF SCOPE, SIZE, COST, ETC.) AND SPECIFIC ROLE [X] Check if project performed with current firm Mr. Martin served as mechanical engineer for Laboratory Airflow Reduction Design and Re-commissioning for the Genetic Medicine Research Building (GMRB) at UNC-CH. Mechanical engineering design services included reduction of laboratory airflow by calculating and resetting minimum airflow rates for labs and completing recommissioning of the air handling units and box controls to ensure calibration and balancing of the revised settings. There were 780 terminal units that were reviewed as part of the project design.		
b.	<b>Kenan Fire Safety and Laboratory Upgrades</b> The University of North Carolina at Chapel Hill (UNC-CH)   Chapel Hill, NC (3) BRIEF DESCRIPTION (BRIEF SCOPE, SIZE, COST, ETC.) AND SPECIFIC ROLE [X] Check if project performed with current firm Mr. Martin served as project mechanical engineer responsible for project QA/QC. As part of UNC-CH's initiative to implement energy conservation measures at the 41-year-old Kenan Lab, McKim & Creed provided mechanical and electrical engineering services to up-fit the modern building automation control system, modify the existing lab/office HVAC equipment, and re-commission the facility. Replacing the constant flow terminal boxes with new DDC variable flow boxes allows greater HVAC control and monitoring and reduces energy consumption.		
c.	<b>Energy Conservation Measure (ECM)</b> The University of North Carolina at Chapel Hill (UNC-CH)   Chapel Hill, NC (3) BRIEF DESCRIPTION (BRIEF SCOPE, SIZE, COST, ETC.) AND SPECIFIC ROLE [X] Check if project performed with current firm Mr. Martin provided development, funding and implementation of a low cost energy conservation project at UNC Chapel Hill to reduce the energy consumption for campus by 15% with a 3 month construction window. The project had an approved schedule extension and completed in twelve months with first year savings of 18%. Total cost of the project was approximately \$800,000 while the first year savings was \$3.9M. This project turned into a multi-year program and won numerous awards.		
d.	<b>Multiple Building Energy Projects</b> The University of North Carolina at Pembroke (UNCP)   Pembroke, NC (3) BRIEF DESCRIPTION (BRIEF SCOPE, SIZE, COST, ETC.) AND SPECIFIC ROLE [X] Check if project performed with current firm McKim & Creed provided engineering services for five energy conservation projects at UNCP. The scope determined the opportunities for fast payback/low implementation cost projects in each of the buildings. The HVAC focused effort involves system testing, data analytics, energy usage analysis and an identification of items that lead to significant and immediate improvements in energy usage, maintenance and occupant comfort. This is a unique service offering in the industry with a focus on identifying and implementing quick payback, immediate improvements in the facility.		
e.	<b>Teaching Lab Energy Conservation</b> The University of North Carolina at Wilmington   Wilmington, NC (3) BRIEF DESCRIPTION (BRIEF SCOPE, SIZE, COST, ETC.) AND SPECIFIC ROLE [X] Check if project performed with current firm Mr. Martin served as project manager for an initial assessment of the performance of the HVAC system including staff interviews, assessment of HVAC systems and calibration of air handler sensors, dampers and valves. Following this assessment, UNCW and McKim & Creed identified priorities for correction that impacted IAQ, occupant comfort or energy efficiency.		

**E. RESUMES OF KEY PERSONNEL PROPOSED FOR THIS CONTRACT**  
(Complete one Section E for each key person.)

12. NAME	13. ROLE IN THIS CONTRACT	14. YEARS EXPERIENCE	
		a. TOTAL	b. WITH CURRENT FIRM
Gene Robinson, Jr., PE	Instrumentation & Controls (I&C)	26	15

15. FIRM NAME AND LOCATION (CITY AND STATE)

McKim &amp; Creed | Clearwater, FL

16. EDUCATION (DEGREE AND SPECIALIZATION)

B.S., Electrical Engineering

17. CURRENT PROFESSIONAL REGISTRATION (STATE AND DISCIPLINE)

Professional Engineer: FL #62976

18. OTHER PROFESSIONAL QUALIFICATIONS (PUBLICATIONS, ORGANIZATIONS, TRAINING, AWARDS, ETC.)

Mr. Robinson offers more than 25 years of experience working with implementation and management of SCADA system and process instrumentation and controls projects in the industrial and municipal marketplace. He offers extensive experience in the areas of SCADA and control system planning and design, telemetry and wireless communications systems, PLC and HMI software implementation, communications and network planning and control systems implementation.

**F. RELEVANT PROJECTS**

	(1) TITLE AND LOCATION (City and State)	(2) YEAR COMPLETED	
		PROFESSIONAL SERVICES	CONSTRUCTION (if Applicable)
a.	<b>Infrastructure and Emergency Management Building Design</b> Land O' Lakes, FL	2006	2007
	(3) BRIEF DESCRIPTION (BRIEF SCOPE, SIZE, COST, ETC.) AND SPECIFIC ROLE [X] Check if project performed with current firm Mr. Robinson served as project manager. McKim & Creed provided site surveying, site engineering, and SCADA engineering services for the Infrastructure and Emergency Management Building at Cypress Creek Water Treatment Plant for Tampa Bay Water. The project consisted of an approximately 17,000 SF building to allow Tampa Bay Water to consolidate maintenance, I&C, and operations staff as well as provide new space for emergency operations for Tampa Bay Water's system.		
b.	<b>Automated Meter Reading Study</b> Pinellas County   Clearwater, FL	2010	2011
	(3) BRIEF DESCRIPTION (BRIEF SCOPE, SIZE, COST, ETC.) AND SPECIFIC ROLE [X] Check if project performed with current firm Mr. Robinson served as electrical engineer for the study to research the conceptual implementation and operational costs and benefits of installing fixed base Automated Meter Reading- Advanced Metering Infrastructure (AMR/AMI) within the County. This evaluation reviewed the potable water and reclaimed water networks, the county's current communications network, and available AMR/AMI technologies. The evaluation provided a summary of capabilities and advantages of each AMR/AMI system, looked at alternative AMR/AMI layouts, considered project implementation phasing requirements, and presented estimates of cost for implementation and operation.		
c.	<b>Aerobic Digester MCC and RCW Pumping Station Back-up Generator Design</b> City of Largo   Largo, FL	2010	2012
	(3) BRIEF DESCRIPTION (BRIEF SCOPE, SIZE, COST, ETC.) AND SPECIFIC ROLE [X] Check if project performed with current firm Mr. Robinson served as electrical engineer for the design and construction of the new stand-by generators for the aerobic digester motor control center (MCC) and the reclaimed water (RCW) pump station. Based on recommendations from the preliminary engineering report performed by McKim & Creed, the city installed two new generators including a 1,500 kW backup generator to provide power for three RCW pumps and a 1,000 kW generator to provide backup power for four digester blowers. Each generator includes a prefabricated sound attenuated enclosure and has two power output breakers and a single automatic transfer switch.		
d.	<b>Bridgeway Acres Wide Area Network Construction Administration Services</b> Pinellas County   Pinellas County, FL	2013	Ongoing
	(3) BRIEF DESCRIPTION (BRIEF SCOPE, SIZE, COST, ETC.) AND SPECIFIC ROLE [X] Check if project performed with current firm Mr. Robinson is serving as project manager. Pinellas County is starting construction of the Bridgeway Acres Wide Area Network project, encompassing the entire Bridgeway Acres site, which consists of site work that includes installation of underground conduit systems, fiber optic and analog cabling, Pond "A" Water Quality Monitoring Site and Gradient Control Level Monitoring Remote Terminal Unit installations.		
e.	<b>Generator Evaluation for Northeast and Marshall Street APCFs</b> City of Clearwater   Clearwater, FL	2004	2005
	(3) BRIEF DESCRIPTION (BRIEF SCOPE, SIZE, COST, ETC.) AND SPECIFIC ROLE [X] Check if project performed with current firm Mr. Robinson served as project manager for the Northeast and Marshall Street Advanced Wastewater Treatment facilities, which utilizes numerous stand-by power generators to provide the required emergency power for the operation of the facility in the case of commercial power loss. Existing, older systems required replacement as they had reached the end of their useful life. Our team conducted an evaluation of the options of replacing existing generators in-kind versus this re-configuration to provide the generators for primary side power feed.		

<b>F. EXAMPLE PROJECTS WHICH BEST ILLUSTRATE PROPOSED TEAM'S QUALIFICATIONS FOR THIS CONTRACT</b> <i>(Present as many projects as requested by the agency, or 10 projects, if not specified. Complete one Section F for each project.)</i>	<b>20. EXAMPLE PROJECT KEY NUMBER</b>  <b>1</b>
---	---

21. TITLE AND LOCATION	22. YEAR COMPLETED	
WWRF OPERATIONS BUILDING AND HARDENING OF BIOSOLIDS BUILDING   LARGO, FL	PROFESSIONAL SERVICES 2018	CONSTRUCTION (IF APPLICABLE) Ongoing

23. PROJECT OWNER'S INFORMATION		
a. PROJECT OWNER City of Largo, FL	b. POINT OF CONTACT NAME Mr. Chas Jordan, MPA, LEED GA	c. POINT OF CONTACT TELEPHONE NUMBER 727.586.7418

24. BRIEF DESCRIPTION OF PROJECT AND RELEVANCE TO THIS CONTRACT <i>(Include scope, size and cost)</i>
<p>After completing a Preliminary Engineering Report for this work, McKim &amp; Creed was selected by the City of Largo to design and construct a new Operations Center to house staff for Plant Operations, Environmental Control and Reclaimed Water divisions at the City's 18 mgd Wastewater Reclamation Facility (WWRF). The scope of work includes preliminary and final design, SUE and survey, geotechnical, permitting and construction phase services for the Operations Building, which is designed with an elevation to allow it to remain operational during a Category 4 hurricane and associated storm surge. Our team is also providing preliminary engineering services for strengthening an existing Biosolids Building to meet a minimum of Category 3 wind loads.</p> <p>Critical to the success of the project is the plant's ability to remain fully operational throughout the construction of the Operations Center and the hardening work at the Biosolids Building. The project also requires coordination with a Construction-Manager-at-Risk and with another improvements project at the site concurrent with this project.</p>

25. FIRMS FROM SECTION C INVOLVED WITH THIS PROJECT		
a.	(1) FIRM NAME McKim & Creed, Inc.	(2) FIRM LOCATION <i>(City and state)</i> Clearwater, FL
b.	(1) FIRM NAME Ingemel S.A. LLC	(2) FIRM LOCATION <i>(City and state)</i> Pembroke, FL
c.	(1) FIRM NAME	(2) FIRM LOCATION <i>(City and state)</i>



**F. EXAMPLE PROJECTS WHICH BEST ILLUSTRATE PROPOSED TEAM'S QUALIFICATIONS FOR THIS CONTRACT**  
*(Present as many projects as requested by the agency, or 10 projects, If not specified. Complete one Section F for each project.)*

**20. EXAMPLE PROJECT KEY NUMBER**

**2**

**21. TITLE AND LOCATION**

**GEOHERMAL COOLING PLANT 2,500 TONS  
CORAL GABLES, FL**

**22. YEAR COMPLETED**

PROFESSIONAL SERVICES

**2016**

CONSTRUCTION (IF APPLICABLE)

**2018**

**23. PROJECT OWNER'S INFORMATION**

**a. PROJECT OWNER**

**Kerney & Associates, Inc.**

**b. POINT OF CONTACT NAME**

**Mr. Otis Chrisofidis**

**c. POINT OF CONTACT TELEPHONE NUMBER**

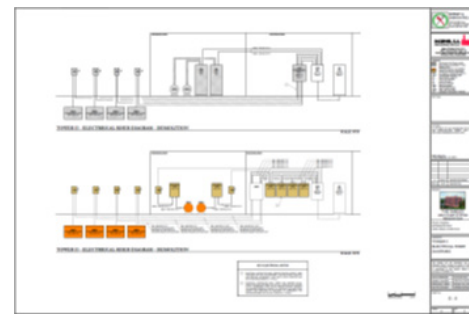
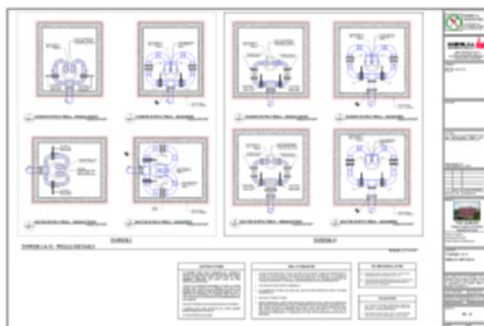
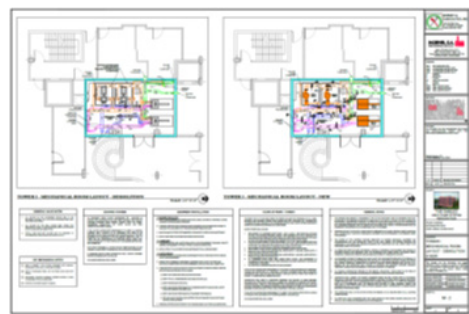
**954.850.5300**

**24. BRIEF DESCRIPTION OF PROJECT AND RELEVANCE TO THIS CONTRACT** *(Include scope, size and cost)*

Ingemel SA provided site survey, design development and final design services for this project. Project entailed replacing a failed condenser water cooling system to a two tower facility with over 200 residences. Points of failure included replacement of two complete MER with pumps, HX's, VFD's and controls, remediation of 9 condenser water wells and the addition of two new condenser water wells with associated piping, pumps and controls.

Engineered solution had to accommodate construction activities around two occupied towers, a limited foot print for the addition of new wells and inherent building issues from original design.

Project was delivered and implemented successfully. Condenser water objectives were exceeded in regards to required flow capacities, well temperatures and system energy savings.



**25. FIRMS FROM SECTION C INVOLVED WITH THIS PROJECT**

a.	(1) FIRM NAME	(2) FIRM LOCATION (City and state)	(3) ROLE
	Ingemel SA LLC	Pembroke Pines, FL	MEP Design Engineering
b.	(1) FIRM NAME	(2) FIRM LOCATION (City and state)	(3) ROLE
	McKim & Creed, Inc.	Ft. Myers, FL	System Design Development/Commissioning
c.	(1) FIRM NAME	(2) FIRM LOCATION (City and state)	(3) ROLE

<b>F. EXAMPLE PROJECTS WHICH BEST ILLUSTRATE PROPOSED TEAM'S QUALIFICATIONS FOR THIS CONTRACT</b> <i>(Present as many projects as requested by the agency, or 10 projects, if not specified. Complete one Section F for each project.)</i>	<b>20. EXAMPLE PROJECT KEY NUMBER</b>  <p style="text-align: center;"><b>3</b></p>
---	--

<b>21. TITLE AND LOCATION</b>  <b>SURF CLUB DISTRICT COOLING PLANT 2,000 TONS</b> <b>SURF SIDE, FL</b>	<b>22. YEAR COMPLETED</b>  <div style="display: flex; justify-content: space-around;"> <div>PROFESSIONAL SERVICES <b>2015</b></div> <div>CONSTRUCTION (IF APPLICABLE) <b>2017</b></div> </div>
---	--

<b>23. PROJECT OWNER'S INFORMATION</b>		
<b>a. PROJECT OWNER</b>  <p style="text-align: center;"><b>Fort Capital</b></p>	<b>b. POINT OF CONTACT NAME</b>  <p style="text-align: center;"><b>Mr. Patrick Kerney</b></p>	<b>c. POINT OF CONTACT TELEPHONE NUMBER</b>  <p style="text-align: center;"><b>954.478.0007</b></p>

**24. BRIEF DESCRIPTION OF PROJECT AND RELEVANCE TO THIS CONTRACT** *(Include scope, size and cost)*

This Central or district cooling plant was designed to provide chilled water to a complex of four facilities including: a residential tower; a Hotel Tower; a Condominium tower, and the Social club facilities (around 900,000 sqft.) all of them located across the street from the available real state space intended for the installation of the Central District Cooling Plant. The biggest challenge on this project was to try to fit the District Cooling Plant (MER) in the small three stories building, across the street from the buildings users. This facility, in addition to be of very small floor plan areas, it had low height ceilings, less than 11 ft., which made impossible the installation of conventional centrifugal chillers; and difficult the large chilled and condenser water pipe sizes required by the project. The footprint of the MER Building Roof, was also too small to accommodate regular cooling towers, and large condenser water pumps, and their related large pipe sizes.

The design was successfully finished in spite of the difficult restrictions of the site, and it is presently operating automatically thru the "BMS-Building Management System" (also part of our design tasks) in satisfactorily conditions. We were able to accommodate the plant in the restricted building, locating two modular magnetic centrifugal chillers, with five independent compressors each, on the second level. The pumping arrangement was of the "Variable Primary System" type, consisting of three (3) intelligent vertical split pumps, fitted with VFD's, that recirculate the chilled water between the Chiller plant and the buildings served by it. These

pumps were also installed on the second level, with all the chilled and condenser water piping, being ceiling suspended and the main loop being buried below the main street (which was in operation at the time of construction). The chiller plant complies with all the local and international codes, and was provided with the elements necessary to comply with ASHRAE 15 Standard.

Using single sided special cross-flow modular Cooling towers cells, we were able to accommodate the four Cells and the intelligent vertical in-line centrifugal condenser water pumps. Making use of the space under the cooling tower, we were able to run supply and return condenser water piping without sacrificing walk thru spaces to permit free and safe access to all the equipment. Energy efficiencies and budget were very satisfactory and above customer's objectives. Ingemel SA was selected based on best design. Owner objective was to install a 2,000 ton central energy plant into the smallest foot print. Based on the cost of real estate on North Beach, the owner selected the Ingemel SA team based on a solution that freed-up over 13 parking spaces, allowed the generator plant to co-exist with the cooling plant and a design that was aesthetically pleasing to the city.

Our team was able to deliver a design that fit 2,000 tons of cooling into the smallest foot print, working with ceiling constraints of 7 feet to 8.5 feet, provide redundant equipment options, develop a plant control system that was open to all BAS vendors and provide a design with the best efficiency operating characteristics compared to other solutions. Project was a success. Detailed design and construction drawings allowed for an installation that exceed time and budget metrics and ultimately exceeded operating cost expectations.



<b>25. FIRMS FROM SECTION C INVOLVED WITH THIS PROJECT</b>		
<b>a.</b> (1) FIRM NAME Ingemel SA LLC	(2) FIRM LOCATION <i>(City and state)</i> Pembroke Pines, FL	(3) ROLE Lead Designer/Commissioning
<b>b.</b> (1) FIRM NAME	(2) FIRM LOCATION <i>(City and state)</i>	(3) ROLE
<b>c.</b> (1) FIRM NAME	(2) FIRM LOCATION <i>(City and state)</i>	(3) ROLE

**F. EXAMPLE PROJECTS WHICH BEST ILLUSTRATE PROPOSED TEAM'S QUALIFICATIONS FOR THIS CONTRACT**  
*(Present as many projects as requested by the agency, or 10 projects, if not specified. Complete one Section F for each project.)*

**20. EXAMPLE PROJECT KEY NUMBER**

**4**

**21. TITLE AND LOCATION**

**FLORIDA POWER AND LIGHT HEADQUARTERS –  
DISTRICT COOLING PLANT 2,500 TONS  
JUNO BEACH, FL**

**22. YEAR COMPLETED**

PROFESSIONAL SERVICES

2013

CONSTRUCTION (IF APPLICABLE)

2013

**23. PROJECT OWNER'S INFORMATION**

**a. PROJECT OWNER**

CBRE - FLORIDA POWER AND LIGHT ACCOUNT

**b. POINT OF CONTACT NAME**

Mr. Victor Echeverry

**c. POINT OF CONTACT TELEPHONE NUMBER**

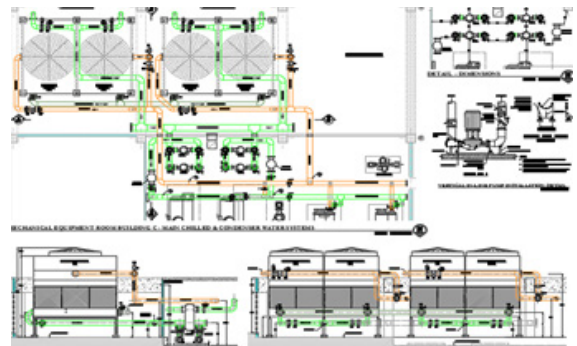
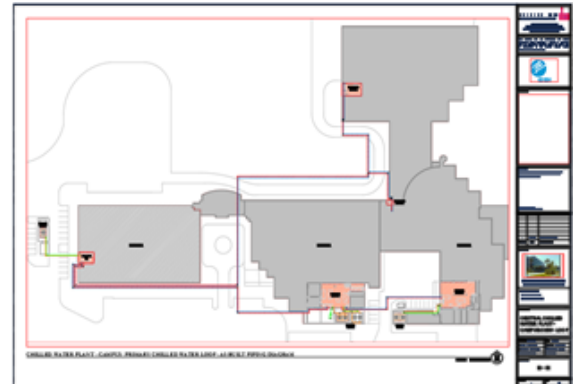
954.593.5441

**24. BRIEF DESCRIPTION OF PROJECT AND RELEVANCE TO THIS CONTRACT** *(Include scope, size and cost)*

The Corporate Headquarters of FPL (Florida Power and Light) consist of five office towers, which were served by independent Chilled Water Plants for each building. Taking advantage of the fact that some of the existing cooling equipment, (chillers, pumps, AHU), were at the end of their life expectancy in some buildings, and trying to avoid repetition of bad experiences with big cooling system failures in this 24/7 facilities, the company decided to embark in a central Chilled Water plant to serve all the buildings, using the mechanical Room of the largest tower.

The objective of this project was to design a central chilled water system with appropriate redundancy and the use of the most advanced chiller's technology and intelligent pumps, and interconnect it with the local air conditioning systems, in several cases including the replacement of existing AHU's, without disturbing the normal daily operations, in such a way that safety and reliability of the system were highest priorities in this "Mission Critical Complex."

One of the biggest challenges of the project was to replace and enlarge the Cooling Tower plant, in an existing internal patio, in a very tight space and without sacrificing the clearances required by the manufacturer for proper air flow. The systems were pre-assembled, and ready for quick installation during three 48 hours, Buildings shutdowns, so coordination among all the trades, contractors and engineers was carefully programed, and this factor contributed to the successful results of the installation of the new Central district Cooling Plant, presently in operation. All new equipment and installation were upgraded to comply with the latest local and national codes and the ASHRAE -15 Standard, and construction drawings were previously subjected to the approval of the local authorities having jurisdiction.



**25. FIRMS FROM SECTION C INVOLVED WITH THIS PROJECT**

a.	(1) FIRM NAME	(2) FIRM LOCATION (City and state)	(3) ROLE
	Ingemel SA LLC	Pembroke Pines, FL	MEP Design Engineering
b.	(1) FIRM NAME	(2) FIRM LOCATION (City and state)	(3) ROLE
c.	(1) FIRM NAME	(2) FIRM LOCATION (City and state)	(3) ROLE



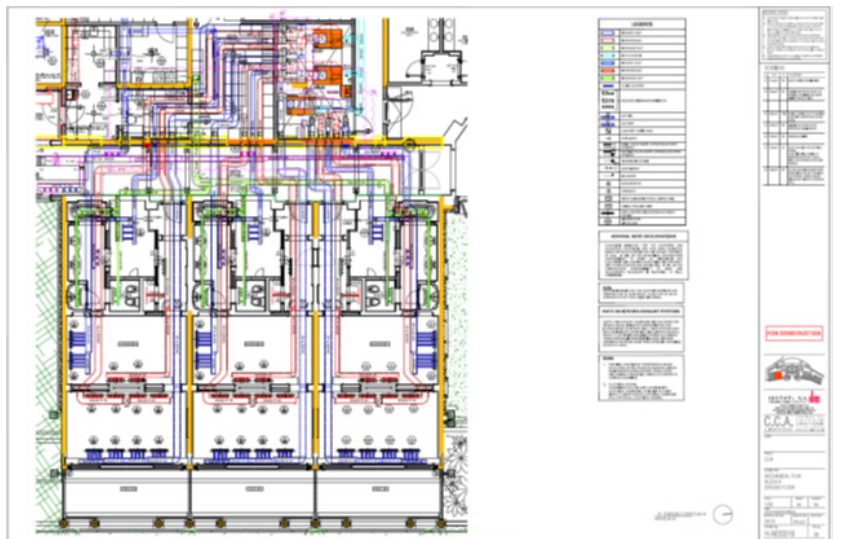
<b>F. EXAMPLE PROJECTS WHICH BEST ILLUSTRATE PROPOSED TEAM'S QUALIFICATIONS FOR THIS CONTRACT</b> <i>(Present as many projects as requested by the agency, or 10 projects, if not specified. Complete one Section F for each project.)</i>	<b>20. EXAMPLE PROJECT KEY NUMBER</b>  <p style="text-align: center;">5</p>
---	---

<b>21. TITLE AND LOCATION</b> <b>CANOUAN ISLAND RESORT</b> <b>GRAND BAY, CANOUAN, ST. VINCENT &amp; THE GRENADINS</b>	<b>22. YEAR COMPLETED</b>	
	PROFESSIONAL SERVICES  2013	CONSTRUCTION (IF APPLICABLE)  2013

<b>23. PROJECT OWNER'S INFORMATION</b>		
a. PROJECT OWNER  C.C.A Limited	b. POINT OF CONTACT NAME  Avil Groden	c. POINT OF CONTACT TELEPHONE NUMBER  784.532.8278

**24. BRIEF DESCRIPTION OF PROJECT AND RELEVANCE TO THIS CONTRACT** *(Include scope, size and cost)*

Canouan resort is an island gem with elegant colonial-style suites and chic, Italian-design Patio Villas. The resort was created with impeccable attention to detail and is home to a collection of restaurants, spa, and a luxury super-yacht marina. The scope of work included preliminary and final design for the approx. 170.000sqft Canouan resort. The design includes a Geothermal district cooling and heating system for the resort. Ingemel worked as a team to develop and design the Mechanical and the Building Management System for the new resort.



**25. FIRMS FROM SECTION C INVOLVED WITH THIS PROJECT**

a.	(1) FIRM NAME Ingemel SA LLC	(2) FIRM LOCATION <i>(City and state)</i> Pembroke Pines, FL	(3) ROLE Prime; MEP Engineering
b.	(1) FIRM NAME	(2) FIRM LOCATION <i>(City and state)</i>	(3) ROLE
c.	(1) FIRM NAME	(2) FIRM LOCATION <i>(City and state)</i>	(3) ROLE

<b>F. EXAMPLE PROJECTS WHICH BEST ILLUSTRATE PROPOSED TEAM'S QUALIFICATIONS FOR THIS CONTRACT</b> <i>(Present as many projects as requested by the agency, or 10 projects, if not specified. Complete one Section F for each project.)</i>	<b>20. EXAMPLE PROJECT KEY NUMBER</b>  <p style="text-align: center;">6</p>
---	---

<b>21. TITLE AND LOCATION</b> <b>TELECOM BUILDING – SUBMARINE CABLE LANDING STATION</b> <b>1ST BUILDING: JACKSONVILLE, FL</b> <b>2ND BUILDING: VIRGINIA BEACH, VA</b>	<b>22. YEAR COMPLETED</b>	
	<b>PROFESSIONAL SERVICES</b>  <p style="text-align: center;">2014</p>	<b>CONSTRUCTION (IF APPLICABLE)</b>  <p style="text-align: center;">2017</p>

<b>23. PROJECT OWNER'S INFORMATION</b>		
<b>a. PROJECT OWNER</b>  <p style="text-align: center;">TELXIUS USA INC</p>	<b>b. POINT OF CONTACT NAME</b>  <p style="text-align: center;">Willy Alegria - Quest Communication</p>	<b>c. POINT OF CONTACT TELEPHONE NUMBER</b>  <p style="text-align: center;">305.992.7252</p>

**24. BRIEF DESCRIPTION OF PROJECT AND RELEVANCE TO THIS CONTRACT** *(Include scope, size and cost)*

Telefonica International Wholesale Services USA Inc wants to build a 11,000 SF Category 5 hurricane and storm surge resistant telecommunications building, in a 300'x125' empty lot in Jacksonville Beach. The winner of this RFQ will have to design the building, construct the building, supply and install the necessary subsystems (Air Conditioning, Diesel generators, AC and DC subs, etc), construct a buried cable route to the ocean in accordance with this RFQ and obtain all required permits and concessions (on behalf of TIWS) to build and operate the station, land cable route and beach-manhole. Ingemel teamed up with Quest Construction for the design portion of the scope of work.

Ingemel developed the entire engineering design from conceptual design to final construction documents. Ingemel team was in charge of the complete Mechanical, Electrical, Plumbing, Fire Suppression, Fire Detection, Security System, Access Control System, CCTV and Building Management System.

After completion of the Building in 2015 the same Quest Construction and Ingemel team was awarded again in 2016 with the similar project in Virginia beach. The building in Virginia Beach was completed in 2018.



**1ST BUILDING: JACKSONVILLE, FL**



**2ND BUILDING: VIRGINIA BEACH, VA**

**25. FIRMS FROM SECTION C INVOLVED WITH THIS PROJECT**

	(1) FIRM NAME	(2) FIRM LOCATION <i>(City and state)</i>	(3) ROLE
a.	Ingemel SA LLC	Pembroke Pines, FL	Engineering Designer
b.			
c.			

<b>F. EXAMPLE PROJECTS WHICH BEST ILLUSTRATE PROPOSED TEAM'S QUALIFICATIONS FOR THIS CONTRACT</b> <i>(Present as many projects as requested by the agency, or 10 projects, if not specified. Complete one Section F for each project.)</i>	<b>20. EXAMPLE PROJECT KEY NUMBER</b>  <b>7</b>
---	---

21. TITLE AND LOCATION	22. YEAR COMPLETED	
UF HEALTH STEAM PRESSURE REDUCING VALVE (PRV) RELOCATION   JACKSONVILLE, FL	PROFESSIONAL SERVICES 2015	CONSTRUCTION (IF APPLICABLE) Ongoing

23. PROJECT OWNER'S INFORMATION		
a. PROJECT OWNER UF Health	b. POINT OF CONTACT NAME Mr. Bob Hervey	c. POINT OF CONTACT TELEPHONE NUMBER 904.244.3380

24. BRIEF DESCRIPTION OF PROJECT AND RELEVANCE TO THIS CONTRACT *(Include scope, size and cost)*

When UF Health (UFH) at Jacksonville needed to upgrade their new boiler system they partnered with local award-winning engineering firm McKim & Creed. Our team partnered with UFH staff to prepare mechanical design drawings and specifications to replace one existing steam boiler in its present location. This new boiler was designed to equal the capacity of the existing system and will connect to the existing steam, controls, feedwater, stack and BAS systems. New domestic water and steam chemical treatment systems were also replaced. Our engineers worked with various vendors recommended by UFH to complete this successful project.

Total project cost: \$1.2 M

25. FIRMS FROM SECTION C INVOLVED WITH THIS PROJECT		
a.	(1) FIRM NAME McKim & Creed, Inc.	(2) FIRM LOCATION <i>(City and state)</i> Clearwater, FL
b.	(1) FIRM NAME	(2) FIRM LOCATION <i>(City and state)</i>
c.	(1) FIRM NAME	(2) FIRM LOCATION <i>(City and state)</i>

<b>F. EXAMPLE PROJECTS WHICH BEST ILLUSTRATE PROPOSED TEAM'S QUALIFICATIONS FOR THIS CONTRACT</b> <i>(Present as many projects as requested by the agency, or 10 projects, if not specified. Complete one Section F for each project.)</i>	<b>20. EXAMPLE PROJECT KEY NUMBER</b>  <p style="text-align: center;">8</p>
---	---

<b>21. TITLE AND LOCATION</b>  <b>LENA ROAD LANDFILL ARCHITECTURAL BUILDING DESIGN   BRADENTON, FL</b>	<b>22. YEAR COMPLETED</b>	
	PROFESSIONAL SERVICES <b>2015</b>	CONSTRUCTION (IF APPLICABLE) <b>Ongoing</b>

<b>23. PROJECT OWNER'S INFORMATION</b>		
a. PROJECT OWNER <b>Manatee County</b>	b. POINT OF CONTACT NAME <b>Mr. Sal Bordonaro, Jr.</b>	c. POINT OF CONTACT TELEPHONE NUMBER <b>941.708.7450 ext. 7341</b>

**24. BRIEF DESCRIPTION OF PROJECT AND RELEVANCE TO THIS CONTRACT** *(Include scope, size and cost)*

The Solid Waste Division manages Lena Road Landfill in an environmentally safe manner, plans for and implements alternative future disposal methods, and develops and manages a program for the identification and proper disposal of household hazardous waste. McKim & Creed provided architectural and engineering services needed for the preliminary design, permitting, final design, bidding, and construction phases for four new buildings at the Lena Road Landfill Facilities. Also included in the scope were coordination meetings with County staff to determine the exact needs for the County at the growing and expanding location, which is adjacent to the Manatee County Southeast Water Reclamation Facility.

The new buildings included an 8,432 SF Equipment Maintenance Building designed for maintenance and repair for the County's vehicle and equipment fleet; a 21,870 SF Community Drop-Off Building designed for the drop-off and temporary storage of household hazardous materials; a 3,036 SF Administration Building that houses the Landfill management and administrative staff; and a 2,911 SF Operations Building to serve the landfill operations staff. The operations, in addition, included a back-up generator housed in an adjacent outdoor enclosure to provide emergency power to it and to the nearby Equipment Maintenance building.



**25. FIRMS FROM SECTION C INVOLVED WITH THIS PROJECT**

a.	(1) FIRM NAME McKim & Creed, Inc.	(2) FIRM LOCATION <i>(City and state)</i> Clearwater, FL	(3) ROLE Prime
b.	(1) FIRM NAME	(2) FIRM LOCATION <i>(City and state)</i>	(3) ROLE
c.	(1) FIRM NAME	(2) FIRM LOCATION <i>(City and state)</i>	(3) ROLE



**F. EXAMPLE PROJECTS WHICH BEST ILLUSTRATE PROPOSED TEAM'S QUALIFICATIONS FOR THIS CONTRACT**

*(Present as many projects as requested by the agency, or 10 projects, if not specified. Complete one Section F for each project.)*

**20. EXAMPLE PROJECT KEY NUMBER**

**9**

**21. TITLE AND LOCATION**

**MARSHALL STREET LABORATORY AND EAST APCF  
GENERATOR IMPROVEMENT | CLEARWATER, FL**

**22. YEAR COMPLETED**

PROFESSIONAL SERVICES

**2014**

CONSTRUCTION (IF APPLICABLE)

**2015**

**23. PROJECT OWNER'S INFORMATION**

**a. PROJECT OWNER**

**City of Clearwater**

**b. POINT OF CONTACT NAME**

**Mr. David Porter**

**c. POINT OF CONTACT TELEPHONE NUMBER**

**727.562.4042**

**24. BRIEF DESCRIPTION OF PROJECT AND RELEVANCE TO THIS CONTRACT** *(Include scope, size and cost)*

McKim & Creed provided bidding, construction management and observation services related to the standby generator power at the East Water Reclamation Facility (WRF) and Marshall Street WRF Laboratory. The first project included demolition of two standby generator systems and the consolidation into one single standby generator which was mounted on a raised concrete platform with hurricane rated enclosure. New power ductbanks and switchgear were installed along with four new transfer switches. Complete bulk fuel and day tanks were also part of the project. Controls of these system were a combination of hardwired and Ethernet over a fiber media. In addition at another location, the project included work at the laboratory where a load shedding scheme was installed on the existing standby system along with uninterruptable power supplies in an N+1 paralleled arrangement.

**BOTH PROJECTS WERE COMPLETED ONE MONTH AHEAD OF SCHEDULE.**

Value of Contract: \$1.2 M



**25. FIRMS FROM SECTION C INVOLVED WITH THIS PROJECT**

	(1) FIRM NAME	(2) FIRM LOCATION <i>(City and state)</i>	(3) ROLE
a.	McKim & Creed, Inc.	Clearwater, FL	Prime; Water, Wastewater Engineer
b.			
c.			



**F. EXAMPLE PROJECTS WHICH BEST ILLUSTRATE PROPOSED TEAM'S QUALIFICATIONS FOR THIS CONTRACT**

*(Present as many projects as requested by the agency, or 10 projects, if not specified. Complete one Section F for each project.)*

**20. EXAMPLE PROJECT KEY NUMBER**

**10**

**21. TITLE AND LOCATION**

**USPS PROCESSING AND DISTRIBUTION CENTER  
FAYETTEVILLE, NC**

**22. YEAR COMPLETED**

PROFESSIONAL SERVICES

**2009**

CONSTRUCTION (IF APPLICABLE)

**2011**

**23. PROJECT OWNER'S INFORMATION**

**a. PROJECT OWNER**

**United States Postal Service**

**b. POINT OF CONTACT NAME**

**Mr. Steve Scarano**

**c. POINT OF CONTACT TELEPHONE NUMBER**

**803.733.4751**

**24. BRIEF DESCRIPTION OF PROJECT AND RELEVANCE TO THIS CONTRACT** *(Include scope, size and cost)*

This project demonstrates our expertise with HVAC component replacements including roof top heat pumps units and boilers. This project included the design for replacement of most of the HVAC systems associated with this approximately 100,000 SF mail processing facility to provide an upgraded system with energy gas and electric metering and energy conservation, which were key parts of the project. Mechanical system upgrades included replacement of existing packaged rooftop heat pumps with new energy efficient rooftop heat pumps, new high efficiency condensing boilers, variable volume hot water pumping, new variable volume single zone and multi-zone air handling units, and new DDC controls system and front end. The project team also created the energy models for the original system's energy consumption and compared it with the new systems that were designed and now installed and operating. The team used previous years' meter data to tune and validate the model to produce results. The team also performed measurement and verification of the predicted savings for the facility. Also completed, was a year-long measurement and verification process that utilized actual weather data provided by the U.S. Department of Energy in the energy models to compare with metered usage to assess the savings.



**THIS PROJECT WON AN ASHRAE REGION 4  
AWARD FOR ENERGY CONSERVATION.**

Value of Contract: \$3,670,000

**25. FIRMS FROM SECTION C INVOLVED WITH THIS PROJECT**

	(1) FIRM NAME	(2) FIRM LOCATION <i>(City and state)</i>	(3) ROLE
a.	McKim & Creed, Inc.	Clearwater, FL	Prime; Mechanical, Electrical, Plumbing Engineer
b.			
c.			

## G. KEY PERSONNEL PARTICIPATION IN EXAMPLE PROJECTS

26. NAMES OF KEY PERSONNEL (From Section E, Block 12)	27. ROLE IN THIS CONTRACT (From Section E, Block 13)	28. EXAMPLE PROJECTS LISTED IN SECTION F (Fill in "Example Projects Key" section below before completing table. Place "X" under project key number for participation in same or similar role.)									
		1	2	3	4	5	6	7	8	9	10
Pedro Arias, PE	Project Executive Lead & Lead Electrical Engineer	X	X	X	X	X	X	X			
Patricia Morales, PE, LEED AP BD+C	Lead Project Engineer	X	X	X	X	X	X	X			
Jhosmared Belmonte	Lead Plumbing Designer					X	X	X			
Maria C. Morales, EIT	Lead Controls Designer		X	X		X	X				
Andres Silva	Lead Chemical Designer		X								
Scott Czubkowski, PE, LEED AP	Project Manager & Project Lead	X	X					X			
Street Lee, PE, ENV SP	Principal-In-Charge										
Tracey Gallentine	Client Liaison										
Michael Rogers, PE, HFDP, LEED AP	Mechanical, Plumbing & Fire Protection Engineer										
Rick Cooper, PE	Mechanical, Plumbing & Fire Protection Engineer							X			
Jared Bettac, PE	Electrical Designer										
Aubrey Haudricourt, PE	Electrical Engineer									X	
Laurel Smith, EI	Electrical Designer									X	
Curtis Burkett, PE, LEED AP	Civil Engineer	X									
Matthew Daves, PE, LEED AP, CBCP	Senior Project Manager & Lead Mechanical Engineer										X
Phil Locke, PE	Project Engineer	X							X		
Chris M. Martin, Jr., PE	Energy Specialist										
Gene Robinson, Jr., PE	Instrumentation & Control (I&C)									X	

## 29. EXAMPLE PROJECTS KEY

NO.	TITLE OF EXAMPLE PROJECT (FROM SECTION F)
1	WWRF Operations Building and Hardening of Biosolids Building
2	Geothermal Cooling Plant 2,500 Tons
3	Surf Club District Cooling Plant 2,000 Tons
4	Florida Power and Light Headquarter - District Cooling Plant 2,500 Tons
5	Canouan Island Resort
6	Telecom Building — Submarine Cable Landing Station
7	UF Health Steam Pressure Reducing Valve (PRV) Relocation
8	Lena Road Landfill Architectural Building Design
9	Marshall Street Laboratory and East APCF Generator Improvement
10	USPS Processing and Distribution Center

## H. ADDITIONAL INFORMATION

30. PROVIDE ANY ADDITIONAL INFORMATION REQUESTED BY THE AGENCY. ATTACH ADDITIONAL SHEETS AS NEEDED.

INGEMEL S.A. LLC is an engineering firm composed of a dynamic group of professionals committed to success ... yours and ours. Our success is deeply rooted in our core values; values that focus on integrity and results.

Founded in 1971 in Bogota, Colombia and in Florida in 2000, INGEMEL S. A. is an employee owned company offering comprehensive, multi-disciplined engineering services for a variety of projects. As employee owners, we work hard because we know you work hard. We give you and your project the attention you expect, providing creative solutions and dependable results. We can deliver a full range of engineering services for industrial, commercial, or government agency projects. We work together with one goal in mind: exceeding your expectations time and again.

Our team can provide coordinated engineering, consulting and design services spanning our specialty divisions. With comprehensive mechanical, electrical, plumbing and instrumentation/controls expertise, we have worked on projects of all sizes and for a wide range of industries.

### MECHANICAL, ELECTRICAL & PLUMBING DESIGN

Unique requirements steer the system selection and design for each project. INGEMEL S. A. provides the project team a broad foundation of MEP systems knowledge supplemented through 45 years of experience, startup and commissioning of systems, and long-term building operations for a wide range of building types. INGEMEL S. A. leverages our engineering "know-how" to select the MEP approach that matches our clients' highest priorities.

INGEMEL S.A. team is committed to providing advanced MEP services to meet a range of needs, from HVAC, lighting, power distribution, instrumentation and building management system to implementation. We work with general contractors, developers, architects, or your in-house personnel to ensure seamless electrical engineering solutions, regardless of your project's size, scope or complexity.

Whether a high-rise building, a research laboratory, mission critical building or an office building; appropriate MEP system design sets the stage for owner, tenant, and occupant satisfaction. INGEMEL S. A. provides MEP design for simple tenant retrofits to complex high rise buildings and unique laboratory applications. Our engineering team is dedicated to providing professional, efficient services to improve your building performance and enhance the overall success of your project. We utilize industry-leading technology and a collaborative, client-first approach throughout all phases of your MEP and process piping system analysis, design, and implementation to ensure innovative solutions tailored to your unique specifications. Let

our experienced team help make your next MEP engineering project a success.

### HVAC SYSTEMS

- Building Heating, Ventilation and Air Conditioning
- Process Air Conditioning and Refrigeration
- Constant Temperature and Humidity Rooms
- Mission Critical Air Conditioning and Pressurization
- Clean Room Air Conditioning Systems

### ELECTRICAL SYSTEMS

- Power Distribution
- Switchgear and Substations
- Emergency Power Systems
- U.P.S. Systems
- DC Systems
- Power Factor Correction
- Short Circuit Studies
- Overcurrent Protective Device Coordination
- Arc Flash Studies
- Lightning Protection ft Grounding

### INSTRUMENTATION/CONTROLS

- P ft ID Development
- Loop Sheet Development
- Distributed Control System Configuration
- System Checkout and Start-Up
- Control Panel Design
- System Training

### PROCESS PIPING SYSTEMS

- Steam, Condensate, and Boiler Systems
- Fuel Handling and Storage Systems
- Compressed Air and Vacuum Systems

### PLUMBING AND FIRE PROTECTION

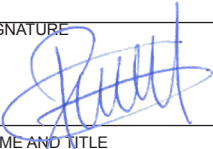
- Plumbing , Util i t y, and Drainage Systems
- Process and Sanitary Waste Systems
- Potable Water Supply and Distribution
- Service Water Supply and Distribution
- Hot Water Distribution System
- Natural Gas Supply and Dist ributi on
- Roof Drainage Systems
- Medical Gases Systems
- Fire Protection water based
- Fire Protection clean agents

## H. ADDITIONAL INFORMATION

30. PROVIDE ANY ADDITIONAL INFORMATION REQUESTED BY THE AGENCY. ATTACH ADDITIONAL SHEETS AS NEEDED.

INGEMEL S. A. LLC provides one-stop shopping for all mechanical, electrical, plumbing, instrumentation and controls engineering projects. We are an engineering company which offers solutions to a variety of industry challenges, from creative designs to designing retro fit work, renovation projects and systems upgrades. We leverage this experience to ensure design consistency, clarity and accuracy.

By incorporating all needed engineering disciplines under one provider, we maintain the integrity of all projects from start to finish, and each client receives the most efficient and cost effective solution. We make our clients part of the process; learning the client's goals to ensure all customer needs are met with satisfaction. Our performance and service attract clients for commercial, municipal, residential and institutional projects.

I. AUTHORIZED REPRESENTATIVE The foregoing is a statement of facts.	
31. SIGNATURE 	32. DATE July 24, 2018
33. NAME AND TITLE Pedro Arias, PE   Director of Electrical Division	

STANDARD FORM 330 (REV. 8/2016) PAGE 5

**ARCHITECT-ENGINEER QUALIFICATIONS**1. SOLICITATION NUMBER (If any)  
PSEN-18-02**PART II - GENERAL QUALIFICATIONS**

(If a firm has branch offices, complete for each specific branch office seeking work.)

2a. FIRM (OR BRANCH OFFICE) NAME  
INGEMEL S.A. LLC3. YEAR ESTABLISHED  
20004. DUNS NUMBER  
-----

2b. STREET

20871 Johnson Street Suite 115

**5. OWNERSHIP**a. TYPE  
LIMITED LIABILITY CORPORATION2c. CITY  
Pembroke Pines2d. STATE  
FL2e. ZIP CODE  
33029

b. SMALL BUSINESS STATUS

Woman &amp; Minority Business Certification

6a. POINT OF CONTACT NAME AND TITLE  
MARIA CRISTINA MORALES – OPERATIONS MANAGER6b. TELEPHONE NUMBER  
954-318-22646c. E-MAIL ADDRESS  
pedroa@ingemel.com

7. NAME OF FIRM (If block 2a is a branch office)

8a. FORMER FIRM NAME(S) (If any)

8b. YR. ESTABLISHED

8c. DUNS NUMBER

**9. EMPLOYEES BY DISCIPLINE****10. PROFILE OF FIRM'S EXPERIENCE AND ANNUAL AVERAGE REVENUE FOR LAST 5 YEARS**

a. Function Code	b. Discipline	c. No. of Employees		a. Profile Code	b. Experience	c. Revenue Index Number (see below)
		(1) FIRM	(2) BRANCH			
02	Administrative	2		F03	Fire Protection	1
08	CADD Technician	3		A12	Automation, Controls, Instrumentation	2
21	Electrical Engineer	4		E03	Electrical Studies and Designs	2
42	Mechanical Engineer	4		C10	Commercial Building Low Rise	1
10	Chemical Engineer	1		D07	Dining Halls, Clubs, Rest.	1
				E02	Educational Facilities	1
				G01	Garages; Vehicle Maintenance	1
				E07	Energy Conservation, New Energy S.	1
				O01	Office Buildings; Industrial Parks	1
				H04	Heating, Ventilation & Air Condit.	2
				I01	Industrial Buildings; Manufacturing	1
				H10	Hotels, Motels	1
				H11	Housing- Residential, Mutif.	1
				L01	Laboratories, Medical Facilities	1
				P07	Plumbing and Piping Design	1
				S02	Security Systems; Intruder	1
				S04	Sewage Collection, Treatment	1
				I03	Industrial Waste Treatment	1
Total		14				

**11. ANNUAL AVERAGE PROFESSIONAL SERVICES REVENUES OF FIRM FOR LAST 3 YEARS**

(Insert revenue index number shown at right)

**PROFESSIONAL SERVICES REVENUE INDEX NUMBER**

a. Federal Work	1	1. Less Than \$100,000	6. \$2 million to less than \$5 million
b. Non-Federal Work	6	2. \$100,000 to less than \$250,000	7. \$5 million to less than \$10 million
c. Total Work	6	3. \$250,000 to less than \$500,000	8. \$10 million to less than \$25 million
		4. \$500,000 to less than \$1 million	9. \$25 million to less than \$50 million
		5. \$1 million to less than \$2 million	10. \$50 million or greater

**12. AUTHORIZED REPRESENTATIVE**  
The foregoing is a statement of facts.

a. SIGNATURE

MARIA CRISTINA MORALES

b. DATE

July 24, 2018

c. NAME AND TITLE MARIA CRISTINA MORALES – OPERATIONS MANAGER

AUTHORIZED FOR LOCAL REPRODUCTION

STANDARD FORM 330 (1/2004) PAGE 6



**ARCHITECT – ENGINEER QUALIFICATIONS**1. SOLICITATION NUMBER (If any)  
**PSEN-18-02****PART II- GENERAL QUALIFICATIONS***(If a firm has branch offices, complete for each specific branch office seeking work.)*

2a. FIRM (OR BRANCH OFFICE) NAME <b>McKim &amp; Creed, Inc.</b>			3. YEAR ESTABLISHED <b>2004</b>		4. UNIQUE ENTITY IDENTIFIER <b>04-693-9948</b>	
2b. STREET <b>5701 Division Drive, Suite A</b>			5. OWNERSHIP			
2c. CITY <b>Fort Myers</b>			12d. STATE <b>FL</b>		12e. ZIP CODE <b>33905</b>	
6a. POINT OF CONTACT NAME AND TITLE <b>Scott Czubkowski, PE , LEED AP   Senior Project Engineer</b>			a. TYPE <b>Professional Corporation</b>			
6b. TELEPHONE NUMBER <b>954.655.4084</b>			b. SMALL BUSINESS STATUS <b>No</b>			
16c. E-MAIL ADDRESS <b>sczubkowski@mckimcreed.com</b>			7. NAME OF FIRM (If block 2a is a branch office) <b>McKim &amp; Creed, Inc.</b>			
8a. FORMER FIRM NAME(S) (If any) <b>McKim &amp; Creed, P.A.</b>			8b. YR. ESTABLISHED <b>1978</b>		8c. UNIQUE ENTITY IDENTIFIER <b>04-693-9948</b>	

9. EMPLOYEES BY DISCIPLINE				10. PROFILE OF FIRM'S EXPERIENCE AND ANNUAL AVERAGE REVENUE FOR LAST 5 YEARS		
a. Function Code	b. Discipline	c. No. of Employees		a. Profile Code	b. Experience	c. Revenue Index Number (see below)
		(1) FIRM	(2) BRANCH			
02	Administrative	16	0	E03	Electrical Studies and Design	6
08	CADD Technicians	13	0	F03	Fire Protection	2
12	Civil Engineers	42	1	H04	Heating; Ventilating; Air Conditioning	6
15	Construction Inspectors	0	0	A12	Automation; Controls; Instrumentation	6
16	Construction Manager	10	0	P06	Planning (Site, Installation, Project)	7
21	Electrical Engineers	14	0	P07	Plumbing & Piping Design	3
29	Geographic Information System Specialist	1	0	S09	Structural Design; Special Structures	4
38	Land Surveyors	39	2	P12	Power Generation; Transmission; Distribution	1
39	Landscape Architects	1	0	G04	Geographic Information System Services: Development, Analysis, and Data Collection	5
42	Mechanical Engineers	13	0	H13	Hydrographic Surveying	5
46	Photogrammetrists	1	0	S13	Storm Water Handling and Facilities	2
57	Structural Engineers	2	0	U03	Utilities	7
33	Hydrographic Surveyors	5	0	S10	Surveying; Platting; Mapping; Flood Plain Studies	1
23	Environmental Engineers	4	0	R07	Remote Sensing	5
49	Remote Sensing Specialists	0	0	L02	Land Surveying	8
25	Fire Protection Engineers	0	0	I03	Industrial Waste Treatment	7
	Mechanical Designers	9	0	W03	Water Supply; Treatment; Distribution	8
	Electrical Designers	5	0			
	Survey Crew Members	127	7			
	Engineer Intern	28	0			
	Other Employees	107	2			
<b>Total</b>		<b>437</b>	<b>12</b>			

11. ANNUAL AVERAGE PROFESSIONAL SERVICES REVENUES OF FIRM FOR LAST 3 YEARS (Insert revenue index number shown at right)		PROFESSIONAL SERVICES REVENUE INDEX NUMBER	
a. Federal Work	4	1. Less than \$100,000	6. \$2 million to less than \$5 million
b. Non-Federal Work	10	2. \$100,000 to less than \$250,000	7. \$5 million to less than \$10 million
c. Total Work	10	3. \$250,000 to less than \$500,000	8. \$10 million to less than \$25 million
		4. \$500,000 to less than \$1 million	9. \$25 million to less than \$50 million
		5. \$1 million to less than \$2 million	10. \$50 million or greater

**12. AUTHORIZED REPRESENTATIVE**  
The foregoing is a statement of facts.

a. SIGNATURE



B. DATE

July 24, 2018

c. NAME AND TITLE

Scott Czubkowski, PE , LEED AP | Senior Project Engineer





July 16, 2009

## TO WHOM IT MAY CONCERN:

This is to certify that **INGEMEL S.A. LLC**, located at 20871 Johnson Street, Pembroke Pines, Florida, has been rendering Engineering Services, for several years, to the following American Express Buildings.

1. American Express South Center – Plantation Building – (397,311 Sq. Ft.) Mission Critical Building
2. American Express Billing, Paying & Statements – Weston Building – (224,650 Sq. Ft) Mission Critical Building.
3. American Express Weston Tech – Weston Building – (59,920 Sq. Ft.) Mission Critical Building.
4. American Express – Tecnoparque Building – Mexico City – Mexico.

INGEMEL S.A. has performed more than 22 projects for American Express Buildings, in several disciplines of Engineering such as Mechanical (Chilled Water Plant Optimizations and A/C Projects) Fire Sprinklers, Plumbing (Domestic water and Sewer Systems), Energy and Electrical (Power, Lighting and Lightening protection) Projects. Among the projects executed are the following two IT projects:

- Telecom Room PBX upgrades.
- Engineering Power and Cooling Assessment – SSP Lab-Room (Electrical & Mechanical).

From our experience of working with INGEMEL we would highlight the following items:

- Engineering staff is very knowledgeable. They have vast experience in all the disciplines where they have worked for us.
- Advanced technology is prevalent in all the projects they handle, resulting in benefits for the reliability of the building systems, and in operating energy savings.
- Constant follow up of projects until delivery result in almost "No punch list".
- Maintain careful control of the proposed schedules for the projects and deliver impeccable work on schedule.
- The quality of their work is second to none and so is the service they have given us, prior during and after delivery of the contracts.

Therefore, we highly recommend **INGEMEL S.A.**, for any project related with their portfolio of services.

Sincerely

A handwritten signature in blue ink, appearing to read "D. Caputo", written over a horizontal line.

Dennis Caputo  
Chief Engineer  
CB Richard Ellis  
777 American Expressway  
Plantation, Florida 33337  
954 503 6068

Curaçao  
Technology  
Exchange N.V.



May 27, 2014

**TO WHOM IT MAY CONCERN**

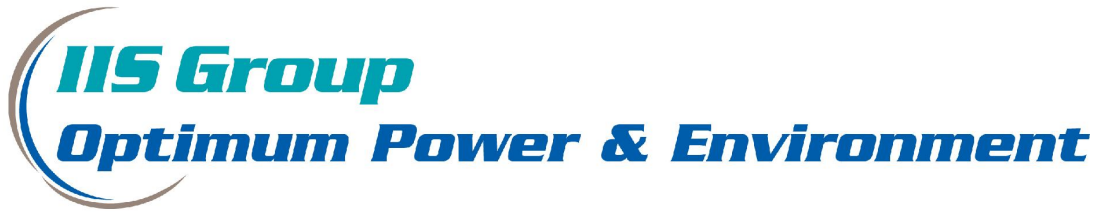
PROJECT DESCRIPTION	
Data Center Owner:	Curacao Technology Exchange, CTEX
Location:	Seru Mahuma, Curacao
Uptime Institute Tier Level:	Tier IV
Data Center Area (White Area):	1,000 m2 (10,758 ft2)
IT Load - UPS Capacity:	2,000 KW.

Curacao Technology Exchange, CTEX, used the services of INGEMEL S.A. LLC for the development of the Conceptual Design and for the development of the Detailed Design for the HVAC system.

The vast experience and the deep knowledge of leading technologies of the entire Ingemel team have contributed to a successful termination of this important endeavor.

Sincerely,

Anthony A. de Lima  
Chairman & CEO



April 2, 2012

TO WHOM IT MAY CONCERN:

We have enjoyed many years of success as a team with INGEMEL S.A. LLC but this year has produced extraordinary results. The support received from Ingemel has been integral in securing new projects.

Ingemel's mastery of project development skills complemented with their excellence in the MEP design field has yielded outstanding results. The input from Pedro Arias, **Accredited Tier Designer**, certified by The Uptime Institute, has proved invaluable for modern Data Center designs. We are currently involved, as a team in a new Colocation Center project for ITS Telephone Company located in Indiantown, Florida.

We have worked with many Engineering firms over the years but the response, knowledge and accuracy of the Ingemel team has always been impeccable. Ingemel S.A. has an excellent reputation for timely completion of work. Needless to say, we consider the company one of our most valued Consultants.

Sincerely,

Christopher E. Bachman  
IIS – Optimum Power and Environment  
Vice President Sales

434 S.W. 12<sup>th</sup> Avenue • Deerfield Beach, FL 33442  
Ph: (954) 360-0601 • Fax: (954) 360-0403  
[www.optimumpower.com](http://www.optimumpower.com)

Canouan, November 2, 2015

**TO WHOM IT MAY CONCERN:**

**The Ingemel Group : Ingemel LLC and Technical Engineering Trading Inc. (TET)** have been a key element in the development of the fast pace design and build project of our high end luxury Hotel in Canouan, San Vincent.

There outstanding knowledge in Mechanical and Electrical Engineering provided a state of the art energy efficient central chilled water plant, central hot water plant, energy recovery systems, and geothermal water usage.

To assure the efficiency of the installation, Ingemel & TET provided, programmed, started and is in the process of commissioning the BMS and EMS system.

BMS System includes control and monitoring for all hotel & Villas air handling units, VAV boxes, Fan coils, Kitchen Exhaustion systems, Water systems, Central Chilled Water plant, Central Hot Water plant, Data Room and all HVAC systems. It also covers integration with third party systems like generators, lighting and temperature control systems in the rooms, Geothermal control system etc.

The Ingemel group has demonstrated outstanding knowledge, excellence in project development and impeccable response and service. We certainly consider Ingemel & TET as a preferred consultant and BMS and EMS provider.

Sincerely,

**Avil Groden**  
**HOD Director of Utilities**



CCA Limited  
Grand Bay, Canouan, St.Vincent & the Grenadines VC0450

T:(784) 458-8773 Ext: 237 | M:(784) 532-8278  
<http://www.ccalimited.com>  
[agroden@ccalimited.com](mailto:agroden@ccalimited.com)



November 2, 2015

**TO WHOM IT MAY CONCERN:**

Ingemel developed the complete MEP and BMS design and Installation drawings for our Telecom Building Submarine Cable Landing Station in Jacksonville, FL. The Ingemel and Technical Engineering Team also developed the installation, programming and commissioning of the BMS system that monitors and/or controls the electrical system, utility, UPSs, emergency generator, lighting, DC plant, Air Conditioning, Fire Suppression and Fire Alarm. They have been providing maintenance services to the BMS system for the last two years and are actually working on the installation, programming and commissioning of the remote monitoring system for our building.

These projects are very fast pace and Ingemel together as a team have met all the required expectations and time schedules.

The vast engineering knowledge and experience of their staff and the invaluable information provided by Maria Claudia Morales have made it possible to deliver impeccable results.

It is a pleasure to recommend Ingemel and Technical Engineering for any projects related to the modern design.

Sincerely,

A handwritten signature in blue ink, appearing to read "C. Garcia", with a stylized flourish at the end.

**Carlos Arturo Garcia | Telefonica Global Solutions, Wholesale  
Station Manager | Jacksonville Cable Station  
402 2nd Avenue South  
Jacksonville, FL 32250, USA.  
arturo.garciamedina@telefonica.com | Phone +1-786-521-2885**

# CERTIFIED MINORITY BUSINESS ENTERPRISE

TAB 3 INCLUDES:  
1. CERTIFIED MINORITY BUSINESS  
ENTERPRISE



State of Florida

Woman & Minority Business Certification

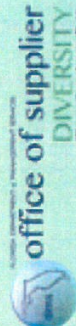
INGEMEL S.A.

Is certified under the provisions of  
287 and 295.187, Florida Statutes, for a period from:

03/19/2018 to 03/19/2020



Erin Rock, Secretary  
Florida Department of Management Services



Office of Supplier Diversity • 4050 Esplanade Way, Suite 380 • Tallahassee, FL 32399 • 850-487-0915 • [www.dms.myflorida.com/osd](http://www.dms.myflorida.com/osd)

## OTHER COMPLETED DOCUMENTS

### TAB 4 INCLUDES:

1. ATTACHMENT B: VENDOR INFORMATION & W9
2. ATTACHMENT C
3. ATTACHMENT D
4. ATTACHMENT E
5. ATTACHMENT F
6. ATTACHMENT G
7. ATTACHMENT H
8. ATTACHMENT I
9. ATTACHMENT L
10. ATTACHMENT M

4/5/2018

Florida Vendor Information Portal

Please print this page for your records.

## Registration Summary

## General Vendor Information

**Vendor Name:** INGEMEL S.A.  
**Short Name (Does Business As):**  
**Ariba Network ID:**  
**Dun and Bradstreet Number:** 022506823  
**Web Site:** <http://www.ingemel.com>  
**Federal Tax ID Number:** F651091671  
**Name that appears on 1099 Form:** INGEMEL S.A. LLC.  
**W9 Status:** Valid W-9 on File  
**DFS W9 Last Update Date:** Apr 26, 2016  
**Business Designation:** Corporation

## Contacts

<u>Name</u>	<u>Title</u>	<u>Phone</u>	<u>Fax</u>	<u>Email</u>
Maria Morales	Operations Manager	954-318-2264	954-450-7216	mcmorales@ingemel.com
Pedro Arias	Director Electrical Division	954-318-2264	954-450-7216	pedroa@ingemel.com

## Locations

<u>Location Name</u>		<u>Vendor Number</u>
<u>INGEMEL S.A.</u>		<u>F651091671 004</u>
<b>P.O. Info:</b> <b>Orders:EMAIL</b> <b>Email:</b> mcmorales@ingemel.com <b>Fax:</b> <b>Contact:</b> Maria Morales  20871 Johnson St Ste 115 Pembroke Pines, FL 33029 Broward US	<b>Remit To:</b> <b>Fax:</b> <b>Contact:</b> Maria Morales  20871 Johnson St Ste 115 Pembroke Pines, FL 33029 Broward US	<b>Billing Contact:</b> <b>Email:</b> <b>Fax:</b> <b>Contact:</b> Maria Morales  20871 Johnson St Ste 115 Florida Pembroke Pines, FL 33029 Broward US

## Certified Business Enterprise Info (CBE)

**Minority Business Designation:** Hispanic, Certified  
**Woman Owned Designation:** Woman-Owned, Certified

4/5/2018

Florida Vendor Information Portal

**FVBE Owned Designation:** Non-FVBE

## Solicitation Selection

**Registered for Solicitations:** Yes**Registered for VBS:** Yes**Solicitation/Sales Contact Email:** mcmorales@ingemel.com

## Florida Terms of Use

**Accepted: 05/14/2012 by Maria Morales**

## Commodity Codes

81101600 Mechanical engineering
81101700 Electrical and electronic engineering
81102400 Electrical power transmission engineering
81102700 Instrumented control systems design and engineering services

[Close Window](#)

Copyright © 2009 State of Florida

**MyFloridaMarketPlace Vendor Registration Customer Service: 866-FLA-EPRO (866-352-3776)**

7/17/2018

REQUEST FOR PROPOSAL FORM



City of Pembroke Pines

Attachment C

## NON-COLLUSIVE AFFIDAVIT

BIDDER is the OWNER

(Owner, Partner, Officer, Representative or Agent)

BIDDER is fully informed respecting the preparation and contents of the attached Bid and of all pertinent circumstances respecting such Bid;

Such Bid is genuine and is not a collusive or sham Bid;

Neither the said BIDDER nor any of its officers, partners, owners, agents, representative, employees or parties in interest, including this affidavit, have in any way colluded, conspired, connived or agreed, directly or indirectly, with any other BIDDER, firm or person to submit a collusive or sham Bid in connection with the Contract for which the attached Bid has been submitted; or to refrain from bidding in connection with such Contract; or have in any manner, directly or indirectly, sought by agreement or collusion, or communications, or conference with any BIDDER, firm, or person to fix the price or prices in the attached Bid or any other BIDDER, or to fix any overhead, profit, or cost element of the Bid Price or the Bid Price of any other BIDDER, or to secure through any collusion conspiracy, connivance, or unlawful agreement any advantage against (Recipient), or any person interested in the proposed Contract;

The price of items quoted in the attached Bid are fair and proper and are not tainted by collusion, conspiracy, connivance, or unlawful agreement on the part of the BIDDER or any other of its agents, representatives, owners, employees or parties in interest, including this affidavit.

Printed Name/Signature

  
NATALIA KRISTINA MORALES

Title OPERATIONS MANAGER

Name of Company INGEMEL S.A. LLC



7/17/2018

REQUEST FOR PROPOSAL FORM



City of Pembroke Pines

Attachment D

**SWORN STATEMENT  
ON PUBLIC ENTITY CRIMES  
UNDER FLORIDA STATUTES CHAPTER 287.133(3)(a).**

1. This sworn statement is submitted INGEMEL S.A. LLC (name of entity submitting sworn statement) whose business address is 20871 Johnson St. Ste 115, Pembroke Pines, FL 330 and (if applicable) its Federal Employer Identification Number (FEIN) is 65-1091671 . (If the entity has no FEIN, include the Social Security Number of the individual signing this sworn statement: .)
2. My name is MARIA CRISTINA MORALES and my (Please print name of individual signing) relationship to the entity named above is OPERATIONS MANAGER .
3. I understand that a "public entity crime" as defined in Paragraph 287.133(1)(g), Florida Statutes, means a violation of any state or federal law by a person with respect to and directly related to the transaction of business with any public entity or with an agency or political subdivision of any other state or with the United States, including, but not limited to, any bid, proposal, reply, or contract for goods or services, any lease for real property, or any contract for the construction or repair of a public building or public work, involving antitrust, fraud, theft, bribery, collusion, racketeering, conspiracy, or material misrepresentation.
4. I understand that a "convicted" or "conviction" as defined in Paragraph 287.133(1)(b), Florida Statutes, means a finding of guilt or a conviction of a public entity crime, with or without an adjudication of guilt, in any federal or state trial court of record relating to charges brought by indictment or information after July 1, 1989, as a result of a jury verdict, nonjury trial, or entry of a plea of guilty or nolo contendere.
5. I understand that an "affiliate" as defined in Paragraph 287.133(1)(a), Florida Statutes, means:
  1. A predecessor or successor of a person convicted of a public entity crime: or
  2. An entity under the control of any natural person who is active in the management of the entity and who has been convicted of a public entity crime. The term "affiliate" includes those officers, directors, executives, partners, shareholders, employees, members, and agents who are active in the management of an affiliate. The Cityship by one person of shares constituting a controlling interest in another person, or a pooling of equipment or income among persons when not for fair market value under an arm's length agreement, shall be a prima facie case that one person controls another person. A person who knowingly enters into a joint venture with a person who has been convicted of a public entity crime in Florida during the preceding 36 months shall be considered an affiliate.
6. I understand that a "person" as defined in Paragraph 287.133(1)(e), Florida Statutes, means any natural person or any entity organized under the laws of any state or of the United States with the legal power to enter into a binding contract and which bids or applies to bid on contracts let by a public entity, or which otherwise transacts or applies to transact business with a public entity, or which otherwise transacts or applies to transact business with a public entity. The term "person" includes those officers, directors,



7/17/2018

## REQUEST FOR PROPOSAL FORM

executives, partners, shareholders, employees, members, and agents who are active in management of an entity.

7. Based on information and belief, the statement which I have marked below is true in relation to the entity submitting this sworn statement. **(Please indicate which statement applies.)**

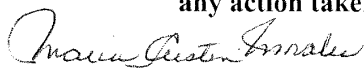
☒ A) Neither the entity submitting this sworn statement, nor any officers, directors, executives, partners, shareholders, employees, members, or agents who are active in management of the entity, nor any affiliate of the entity have been charged with and convicted of a public entity crime subsequent to July 1, 1989.

☐ B) The entity submitting this sworn statement, or one or more of the officers, directors, executives, partners, shareholders, employees, members, or agents who are active in management of the entity, or an affiliate of the entity has been charged with and convicted of a public entity crime subsequent to July 1, 1989, AND **(Please indicate which additional statement applies.)**

☐ B1) There has been a proceeding concerning the conviction before a hearing officer of the State of Florida, Division of Administrative Hearings. The final order entered by the hearing officer did not place the person or affiliate on the convicted vendor list. **(Please attach a copy of the final order.)**

☐ B2) The person or affiliate was placed on the convicted vendor list. There has been a subsequent proceeding before a hearing officer of the State of Florida, Division of Administrative Hearings. The final order entered by the hearing officer determined that it was in the public interest to remove the person or affiliate from the convicted vendor list. **(Please attach a copy of the final order.)**

☐ B3) The person or affiliate has not been placed on the convicted vendor list. **(Please describe any action taken by or pending with the Department of General Services.)**



Maria Cristina Morales  
Bidder's Name/Signature

INGEMEL S.A. LLC  
Company

07/17/2018  
Date

7/17/2018

REQUEST FOR PROPOSAL FORM

**CONTACT INFORMATION FORM**

IN ACCORDANCE WITH “RFQ # PSEN-18-02” titled “Professional Service Providers (Architectural, Engineering, Surveying & Mapping)” attached hereto as a part hereof, the undersigned submits the following:

**A) Contact Information**

The Contact information form shall be electronically signed by one duly authorized to do so, and in case signed by a deputy or subordinate, the principal's properly written authority to such deputy or subordinate must accompany the proposal. This form must be completed and submitted through [www.bidsync.com](http://www.bidsync.com) as part of the bidder's submittal.

**COMPANY INFORMATION:**

COMPANY: INGEMEL S.A. LLC

STREET ADDRESS: 20871 Johnson St. Ste 115

CITY, STATE &amp; ZIP CODE: Pembroke Pines, FL 33029

**PRIMARY CONTACT FOR THE PROJECT:**

NAME: PEDRO ARIAS

TITLE: Director of Electrical Division

E-MAIL: [pedroa@ingemel.com](mailto:pedroa@ingemel.com)-  
TELEPHONE: 954-318-2264

FAX: 954-450-7216


**CORPORATE OFFICER AUTHORIZED APPROVER:**

NAME: Maria Cristina Morales

TITLE: Operations Manager

E-MAIL: [mcmorales@ingemel.com](mailto:mcmorales@ingemel.com)-  
TELEPHONE: 954-318-2264

FAX: 954-450-7216

SIGNATURE: 

7/20/2018

REQUEST FOR PROPOSAL FORM

**PROFESSIONAL SERVICES FORM**

*Please check the boxes shown below that your company wants to be considered for:*

<input checked="" type="checkbox"/>	<b>General Civil and Environmental Engineering Services</b>
<input checked="" type="checkbox"/>	<b>Treatment Plant Process Engineering Services</b>
<input checked="" type="checkbox"/>	<b>Electrical Engineering Services</b>
<input type="checkbox"/>	<b>Geotechnical Services</b>
<input checked="" type="checkbox"/>	<b>Structural Engineering Services</b>
<input checked="" type="checkbox"/>	<b>Land Surveying Services</b>
<input type="checkbox"/>	<b>General Architectural Services</b>
<input type="checkbox"/>	<b>Landscape Architecture Services</b>
<input type="checkbox"/>	<b>Hydro-Geological Services</b>
<input type="checkbox"/>	<b>FDOT Roadway Engineering Services</b>

7/17/2018

REQUEST FOR PROPOSAL FORM



City of Pembroke Pines

Attachment G

## EQUAL BENEFITS CERTIFICATION FORM FOR DOMESTIC PARTNERS AND ALL MARRIED COUPLES

Except where federal or state law mandates to the contrary, a Contractor awarded a Contract pursuant to a competitive solicitation shall provide benefits to Domestic Partners and spouses of its employees, irrespective of gender, on the same basis as it provides benefits to employees' spouses in traditional marriages.

The Contractor shall provide the City and/or the City Manager or his/her designee, access to its records for the purpose of audits and/or investigations to ascertain compliance with the provisions of this section, and upon request shall provide evidence that the Contractor is in compliance with the provisions of this section upon each new bid, contract renewal, or when the City Manager has received a complaint or has reason to believe the Contractor may not be in compliance with the provisions of this section. Records shall include but not be limited to providing the City and/or the City Manager or his/her designee with certified copies of the Contractor's records pertaining to its benefits policies and its employment policies and practices.

The Contractor must conspicuously make available to all employees and applicants for employment the following statement:

**"During the performance of a contract with the City of Pembroke Pines, Florida, the Contractor will provide Equal Benefits to its employees with spouses, as defined by Section 35.39 of the City's Code of Ordinances, and its employees with Domestic Partners and all Married Couples".**

The posted statement must also include a City contact telephone number and email address which will be provided to each contractor when a covered contract is executed.

### SECTION 1 DEFINITIONS

- 1. Benefits** means the following plan, program or policy provided or offered by a contractor to its employees as part of the employer's total compensation package which may include but is not limited to sick leave, bereavement leave, family medical leave, and health benefits.
- 2. Cash Equivalent** mean the amount of money paid to an employee with a domestic partner or spouse in lieu of providing benefits to the employee's domestic partner or spouse. The cash equivalent is equal to the employer's direct expense of providing benefits to an employee for his or her spouse from a traditional marriage.
- 3. Covered Contract** means a contract between the City and a contractor awarded subsequent to the date when this section becomes effective valued at over \$25,000 or the threshold amount required for competitive bids as required in section 35.18(A) of the Procurement Code.
- 4. Domestic Partner** shall mean any two (2) adults of the same or different sex who have registered as domestic partners with a governmental body pursuant to state or local law authorizing such registration, or with an internal registry maintained by the employer of at least one of the domestic partners. A contractor may institute an internal registry to allow for the provision of equal benefits to employees with domestic partners who do not register their partnerships pursuant to a governmental body authorizing such registration, or who are located in a jurisdiction where no such governmental domestic partnership registry exists. A contractor that institutes such registry shall not impose criteria for registration that are more stringent than those required for domestic partnership registration by the City of Pembroke Pines.
- 5. Equal benefits** means the equality of benefits between employees with spouses and/or dependents of spouses and employees with domestic partners and/or dependents of domestic partners, and/or between spouses of employees and/or dependents of spouses and domestic partners of employees and/or dependents of domestic partners.
- 6. Spouse** means one member of a married pair legally married under the laws of any state within the United States of America or any other jurisdiction under which such marriage is legally recognized, irrespective of gender.

7/17/2018

## REQUEST FOR PROPOSAL FORM

**7. Traditional marriage** means a marriage between one man and one woman.

**SECTION 2 CERTIFICATION OF CONTRACTOR**

The firm providing a response, by virtue of the signature below, certifies that it is aware of the requirements of Section 35.39 "City Contractors providing Equal Benefits for Domestic Partners and all Married Couples" of the City's Code of Ordinances, and certifies the following (**Check only one box below**):

- ☒ **A.** Contractor currently complies with the requirements of this section; or
- ☐ **B.** Contractor will comply with the conditions of this section at the time of contract award; or
- ☐ **C.** Contractor will not comply with the conditions of this section at the time of contract award; or
- ☐ **D.** Contractor does not comply with the conditions of this section because of the following allowable exemption (**Check only one box below**):
- ☐ **1.** The Contractor does not provide benefits to employees' spouses in traditional marriages;
- ☐ **2.** The Contractor provides an employee the cash equivalent of benefits because the Contractor is unable to provide benefits to employees' Domestic Partners or spouses despite making reasonable efforts to provide them. To meet this exception, the Contractor shall provide a notarized affidavit that it has made reasonable efforts to provide such benefits. The affidavit shall state the efforts taken to provide such benefits and the amount of the cash equivalent. Cash equivalent means the amount of money paid to an employee with a Domestic Partner or spouse rather than providing benefits to the employee's Domestic Partner or spouse. The cash equivalent is equal to the employer's direct expense of providing benefits to an employee's spouse;
- ☐ **3.** The Contractor is a religious organization, association, society, or any non-profit charitable or educational institution or organization operated supervised or controlled by or in conjunction with a religious organization, association, or society;
- ☐ **4.** The Contractor is a governmental agency;

**The certification shall be signed by an authorized officer of the Contractor. Failure to provide such certification (by checking the appropriate boxes above along with completing the information below) shall result in a Contractor being deemed non-responsive.**

COMPANY NAME: INGEMEL S.A. LLC

AUTHORIZED OFFICER NAME / SIGNATURE: Maria Cristina Morales







City of Pembroke Pines

Attachment M

## VENDOR DRUG-FREE WORKPLACE CERTIFICATION FORM

### SECTION 1 GENERAL TERM

Preference may be given to vendors submitting a certification with their bid/proposal certifying they have a drug-free workplace in accordance with Section 287.087, Florida Statutes. This requirement affects all public entities of the State and becomes effective January 1, 1991. The special condition is as follows:

**IDENTICAL TIE BIDS** - Preference may be given to businesses with drug-free workplace programs. Whenever two or more bids that are equal with respect to price, quality, and service are received by the State or by any political subdivision for the procurement of commodities or contractual services, a bid received from a business that certifies that it has implemented a drugfree workplace program shall be given preference in the award process. Established procedures for processing tie bids will be followed if none of the tied vendors have a drug-free workplace program. In order to have a drug-free workplace program, a business shall:

1. Publish a statement notifying employees that the unlawful manufacture, distribution, dispensing, possession, or use of a controlled substance is prohibited in the workplace and specifying the actions that will be taken against employees for violations of such prohibition.
2. Inform employees about the dangers of drug abuse in the workplace, the business's policy of maintaining a drug-free workplace, any available drug counseling, rehabilitation, and employee assistance programs, and the penalties that may be imposed upon employees for drug abuse violations.
3. Give each employee engaged in providing the commodities or contractual services that are under bid a copy of the statement specified in subsection (1).
4. In the statement specified in subsection (1), notify the employees that, as a condition of working on the commodities or contractual services that are under bid, the employee will abide by the terms of the statement and will notify the employer of any conviction of, or plea of guilty or nolo contendere to, any violation of chapter 893 or of any controlled substance law of the United States or any state, for a violation occurring in the workplace no later than five (5) days after each conviction.
5. Impose a sanction on, or require the satisfactory participation in a drug abuse assistance or rehabilitation program if such is available in the employee's community, by any employee who is so convicted.
6. Make a good faith effort to continue to maintain a drug-free workplace through implementation of this section.

### SECTION 2 AFFIRMATION

☒ Place a check mark here only if affirming bidder **complies fully** with the above requirements for a Drug-Free Workplace.

☐ Place a check mark here only if affirming bidder **does not** meet the requirements for a Drug-Free Workplace.

**Failure to complete this certification at this time (by checking either of the boxes above) shall render the vendor ineligible for Drug-Free Workplace Preference. This form must be completed by/for the proposer; the proposer WILL NOT qualify for Drug-Free Workplace Preference based on their sub-contractors' qualifications.**

  
Authorized Signature

MARIACRISTINA MORALES  
Authorized Signer Name

O. INGEHEL S.A. LLC  
Company Name



City of Pembroke Pines

Attachment I

**PROPOSER'S QUALIFICATIONS STATEMENT**

PROPOSER shall furnish the following information. Failure to comply with this requirement will render Bid non-responsive and shall cause its rejection. Additional sheets shall be attached as required.

PROPOSER'S Name and Principal Address:

INGEMEL S.A. LLC

20871 Johnson Street Ste 115

Pembroke Pines, FL 33029

Contact Person's Name and Title: MARIA CRISTINA MORALES - Operations Manager

Contact Person's E-mail Address: mmorales@ingemel.com

PROPOSER'S Telephone and Fax Number: PH 954-318-2264 FAX 954-450-7216

PROPOSER'S License Number: 9113

**(Please attach certificate of status, competency, and/or state registration.)**

PROPOSER'S Federal Identification Number: 65-1091671

Number of years your organization has been in business 17 yrs

State the number of years your firm has been in business under your present business name 17 yrs.

State the number of years your firm has been in business in the work specific to this solicitation:  
17 years

Names and titles of all officers, partners or individuals doing business under trade name:

PATRICIA MORALES - PRESIDENT

PEDRO ARIAS - DIRECTOR ELECTRICAL DIVISION

MARIA CLAUDIA MORALES - DIRECTOR AUTOMATION DIVISION

MARIA CRISTINA MORALES - OPERATIONS MANAGER

The business is a: Sole Proprietorship ☐ Partnership ☐ Corporation ☐

IF USING A FICTITIOUS NAME, SUBMIT EVIDENCE OF COMPLIANCE WITH FLORIDA FICTITIOUS NAME STATUTE. (ATTACH IN PROPOSER EXHIBIT SECTION)



City of Pembroke Pines

## Attachment I

Under what former name has your business operated? Include a description of the business. Failure to include such information shall be deemed to be intentional misrepresentation by the City and shall render the proposer RFP submittals non-responsive.

*N/A*

At what address was that business located?

*N/A*

Name, address, and telephone number of surety company and agent who will provide the required bonds on this contract:

*N/A*

Have you ever failed to complete work awarded to you. If so, when, where and why?

*NO*

Have you personally inspected the proposed WORK and do you have a complete plan for its performance?

*YES*



City of Pembroke Pines

## Attachment I

Will you subcontract any part of this WORK? If so, give details including a list of each subcontractor(s) that will perform work in excess of ten percent (10%) of the contract amount and the work that will be performed by each subcontractor(s).

Dependent on type of services requested and project award, McKim & Creed, noted subcontractor.

The foregoing list of subcontractor(s) may not be amended after award of the contract without the prior written approval of the Contract Administrator, whose approval shall not be reasonably withheld.

List and describe all bankruptcy petitions (voluntary or involuntary) which have been filed by or against the Proposer, its parent or subsidiaries or predecessor organizations during the past five (5) years. Include in the description the disposition of each such petition.

N/A

List and describe all successful Bond claims made to your surety (ies) during the last five (5) years. The list and descriptions should include claims against the bond of the Proposer and its predecessor organization(s).

N/A

List all claims, arbitrations, administrative hearings and lawsuits brought by or against the Proposer or its predecessor organizations(s) during the last (10) years. The list shall include all case names; case, arbitration or hearing identification numbers; the name of the project over which the dispute arose; and a description of the subject matter of the dispute.

N/A



City of Pembroke Pines

## Attachment I

List and describe all criminal proceedings or hearings concerning business related offenses in which the Proposer, its principals or officers or predecessor organization(s) were defendants.

N/A

Has the Proposer, its principals, officers or predecessor organization(s) been CONVICTED OF A Public Entity Crime, debarred or suspended from bidding by any government entity? If so, provide details.

NO

Are you an ☒ Original provider ☐ sales representative ☐ distributor, ☐ broker, ☐ manufacturer ☐ other, of the commodities/services proposed upon? If other than the original provider, explain below.

Have you ever been debarred or suspended from doing business with any governmental agency? If yes, please explain:

NO





City of Pembroke Pines

## Attachment I

Describe the firm's local experience/nature of service with contracts of similar size and complexity, in the previous three (3) years:

Please see information provided on pages 30-39, SF 330 Relevant Project

Experience and relevant experience provided in the SF 330 Team Resumes,  
pages 9-29.

The PROPOSER acknowledges and understands that the information contained in response to this Qualification Statement shall be relied upon by CITY in awarding the contract and such information is warranted by PROPOSER to be true. The discovery of any omission or misstatement that materially affects the PROPOSER'S qualifications to perform under the contract shall cause the CITY to reject the Bid, and if after the award, to cancel and terminate the award and/or contract.

INGENEL S A. LLC

(Company Name)

Maria Cristina Morales MAURICISINA MORALES

(Printed Name/Signature)

REQUEST FOR PROPOSAL FORM



## p. 70

# PROFESSIONAL REGISTRATION CERTIFICATES

TAB 5 INCLUDES:  
1. FIRM'S STATE OF FLORIDA  
REGISTRATION

## *State of Florida Department of State*

I certify from the records of this office that INGEMEL S.A., LLC is a limited liability company organized under the laws of the State of Florida, filed on November 7, 2000.

The document number of this limited liability company is L00000014110.

I further certify that said limited liability company has paid all fees due this office through December 31, 2018, that its most recent annual report was filed on April 2, 2018, and that its status is active.

*Given under my hand and the  
Great Seal of the State of Florida  
at Tallahassee, the Capital, this  
the Second day of April, 2018*



*Ken DeFina*  
**Secretary of State**

Tracking Number: CC5078297564

To authenticate this certificate, visit the following site, enter this number, and then follow the instructions displayed.

<https://services.sunbiz.org/Filings/CertificateOfStatus/CertificateAuthentication>

# MCKIM & CREED FLORIDA REGISTRATION



Florida Department of Agriculture and Consumer Services  
Division of Consumer Services  
Board of Professional Surveyors and Mappers  
2005 Apalachee Pkwy Tallahassee, Florida 32399-6500

License No.: **LB7917**

Expiration Date February 28, 2019

## Professional Surveyor and Mapper Business License

Under the provisions of Chapter 472, Florida Statutes

**MCKIM & CREED INC.**  
1730 VARSITY DR STE 500  
RALEIGH, NC 27606-2689

ADAM H. PUTNAM  
COMMISSIONER OF AGRICULTURE

This is to certify that the professional surveyor and mapper whose name and address are shown above is licensed as required by Chapter 472, Florida Statutes.





PROFESSIONAL ENGINEERING PROVIDERS  
(ARCHITECTURAL, ENGINEERING, SURVEY & MAPPING)



Supplier: **INGEMEL SA LLC**



City of Pembroke Pines

Attachment C

**NON-COLLUSIVE AFFIDAVIT**

BIDDER is the **Owner**,

(Owner, Partner, Officer, Representative or Agent)

BIDDER is fully informed respecting the preparation and contents of the attached Bid and of all pertinent circumstances respecting such Bid;

Such Bid is genuine and is not a collusive or sham Bid;

Neither the said BIDDER nor any of its officers, partners, owners, agents, representative, employees or parties in interest, including this affidavit, have in any way colluded, conspired, connived or agreed, directly or indirectly, with any other BIDDER, firm or person to submit a collusive or sham Bid in connection with the Contract for which the attached Bid has been submitted; or to refrain from bidding in connection with such Contract; or have in any manner, directly or indirectly, sought by agreement or collusion, or communications, or conference with any BIDDER, firm, or person to fix the price or prices in the attached Bid or any other BIDDER, or to fix any overhead, profit, or cost element of the Bid Price or the Bid Price of any other BIDDER, or to secure through any collusion conspiracy, connivance, or unlawful agreement any advantage against (Recipient), or any person interested in the proposed Contract;

The price of items quoted in the attached Bid are fair and proper and are not tainted by collusion, conspiracy, connivance, or unlawful agreement on the part of the BIDDER or any other of its agents, representatives, owners, employees or parties in interest, including this affidavit.

Printed Name/Signature **MARIA CRISTINA MORALES**

Title **OPERATIONS MANAGER**

Name of Company **INGEMEL S.A. LLC**

Supplier: **INGEMEL SA LLC**



City of Pembroke Pines

Attachment D

**SWORN STATEMENT  
ON PUBLIC ENTITY CRIMES  
UNDER FLORIDA STATUTES CHAPTER 287.133(3)(a).**

1. This sworn statement is submitted **INGEMEL SA LLC** (name of entity submitting sworn statement) whose business address is **20871 JOHNSON ST STE 115** and (if applicable) its Federal Employer Identification Number (FEIN) is **65-1091671**. (If the entity has no FEIN, include the Social Security Number of the individual signing this sworn statement: .)
2. My name is **MARIA CRISTINA MORALES** and my  
(Please print name of individual signing)  
  
relationship to the entity named above is **OPERATIONS MANAGER**.
3. I understand that a "public entity crime" as defined in Paragraph 287.133(1)(g), Florida Statutes, means a violation of any state or federal law by a person with respect to and directly related to the transaction of business with any public entity or with an agency or political subdivision of any other state or with the United States, including, but not limited to, any bid, proposal, reply, or contract for goods or services, any lease for real property, or any contract for the construction or repair of a public building or public work, involving antitrust, fraud, theft, bribery, collusion, racketeering, conspiracy, or material misrepresentation.
4. I understand that a "convicted" or "conviction" as defined in Paragraph 287.133(1)(b), Florida Statutes, means a finding of guilt or a conviction of a public entity crime, with or without an adjudication of guilt, in any federal or state trial court of record relating to charges brought by indictment or information after July 1, 1989, as a result of a jury verdict, nonjury trial, or entry of a plea of guilty or nolo contendere.
5. I understand that an "affiliate" as defined in Paragraph 287.133(1)(a), Florida Statutes, means:
  1. A predecessor or successor of a person convicted of a public entity crime: or
  2. An entity under the control of any natural person who is active in the management of the entity and who has been convicted of a public entity crime. The term "affiliate" includes those officers, directors, executives, partners, shareholders, employees, members, and agents who are active in the management of an affiliate. The Cityship by one person of shares constituting a controlling interest in another person, or a pooling of equipment or income among persons when not for fair market value under an arm's length agreement, shall be a prima facie case that one person controls another person. A person who knowingly enters into a joint venture with a person who has been convicted of a public entity crime in Florida during the preceding 36 months shall be considered an affiliate.
6. I understand that a "person" as defined in Paragraph 287.133(1)(e), Florida Statutes, means any

natural person or any entity organized under the laws of any state or of the United States with the legal power to enter into a binding contract and which bids or applies to bid on contracts let by a public entity, or which otherwise transacts or applies to transact business with a public entity, or which otherwise transacts or applies to transact business with a public entity. The term "person" includes those officers, directors, executives, partners, shareholders, employees, members, and agents who are active in management of an entity.

7. Based on information and belief, the statement which I have marked below is true in relation to the entity submitting this sworn statement. **(Please indicate which statement applies.)**

☒ A) Neither the entity submitting this sworn statement, nor any officers, directors, executives, partners, shareholders, employees, members, or agents who are active in management of the entity, nor any affiliate of the entity have been charged with and convicted of a public entity crime subsequent to July 1, 1989.

☐ B) The entity submitting this sworn statement, or one or more of the officers, directors, executives, partners, shareholders, employees, members, or agents who are active in management of the entity, or an affiliate of the entity has been charged with and convicted of a public entity crime subsequent to July 1, 1989, AND **(Please indicate which additional statement applies.)**

☐ B1) There has been a proceeding concerning the conviction before a hearing officer of the State of Florida, Division of Administrative Hearings. The final order entered by the hearing officer did not place the person or affiliate on the convicted vendor list. **(Please attach a copy of the final order.)**

☐ B2) The person or affiliate was placed on the convicted vendor list. There has been a subsequent proceeding before a hearing officer of the State of Florida, Division of Administrative Hearings. The final order entered by the hearing officer determined that it was in the public interest to remove the person or affiliate from the convicted vendor list. **(Please attach a copy of the final order.)**

☐ B3) The person or affiliate has not been placed on the convicted vendor list. **(Please describe any action taken by or pending with the Department of General Services.)**

**MARIA CRISTINA MORALES**  
Bidder's Name/Signature

**INGEMEL SA LLC**  
Company

**07-23-2018**  
Date



Supplier: **INGEMEL SA LLC**

**CONTACT INFORMATION FORM**

IN ACCORDANCE WITH “RFQ # PSEN-18-02” titled “**Professional Service Providers (Architectural, Engineering, Surveying & Mapping)**” attached hereto as a part hereof, the undersigned submits the following:

**A) Contact Information**

The Contact information form shall be electronically signed by one duly authorized to do so, and in case signed by a deputy or subordinate, the principal's properly written authority to such deputy or subordinate must accompany the proposal. This form must be completed and submitted through [www.bidsync.com](http://www.bidsync.com) as part of the bidder's submittal.

**COMPANY INFORMATION:**

COMPANY: **INGEMEL SA LLC**

STREET ADDRESS: **20871 JOHNSON ST STE 115**

CITY, STATE & ZIP CODE: **PEMBROKE PINES, FL, 33029**

**PRIMARY CONTACT FOR THE PROJECT:**

NAME: **PEDRO ARIAS** TITLE: **DIRECTOR ELECTRICAL DIVISION**

E-MAIL: **pedroa@ingemel.com**

- TELEPHONE: **9543182264** FAX: **9544507216**

**CORPORATE OFFICER AUTHORIZED APPROVER:**

NAME: **MARIA CRISTINA MORALES** TITLE: **OPERATIONS MANAGER**

E-MAIL: **mcmorales@ingemel.com**

- TELEPHONE: **9543182264** FAX: **9544507216**

SIGNATURE: **MARIA CRISTINA MORALES**

**Supplier: INGEMEL SA LLC****PROFESSIONAL SERVICES FORM**

*Please check the boxes shown below that your company wants to be considered for:*

<input checked="" type="checkbox"/>	<b>General Civil and Environmental Engineering Services</b>
<input checked="" type="checkbox"/>	<b>Treatment Plant Process Engineering Services</b>
<input checked="" type="checkbox"/>	<b>Electrical Engineering Services</b>
<input type="checkbox"/>	<b>Geotechnical Services</b>
<input checked="" type="checkbox"/>	<b>Structural Engineering Services</b>
<input checked="" type="checkbox"/>	<b>Land Surveying Services</b>
<input type="checkbox"/>	<b>General Architectural Services</b>
<input type="checkbox"/>	<b>Landscape Architecture Services</b>
<input type="checkbox"/>	<b>Hydro-Geological Services</b>
<input type="checkbox"/>	<b>FDOT Roadway Engineering Services</b>

Supplier: **INGEMEL SA LLC**



City of Pembroke Pines

Attachment G

## **EQUAL BENEFITS CERTIFICATION FORM FOR DOMESTIC PARTNERS AND ALL MARRIED COUPLES**

Except where federal or state law mandates to the contrary, a Contractor awarded a Contract pursuant to a competitive solicitation shall provide benefits to Domestic Partners and spouses of its employees, irrespective of gender, on the same basis as it provides benefits to employees' spouses in traditional marriages.

The Contractor shall provide the City and/or the City Manager or his/her designee, access to its records for the purpose of audits and/or investigations to ascertain compliance with the provisions of this section, and upon request shall provide evidence that the Contractor is in compliance with the provisions of this section upon each new bid, contract renewal, or when the City Manager has received a complaint or has reason to believe the Contractor may not be in compliance with the provisions of this section. Records shall include but not be limited to providing the City and/or the City Manager or his/her designee with certified copies of the Contractor's records pertaining to its benefits policies and its employment policies and practices.

The Contractor must conspicuously make available to all employees and applicants for employment the following statement:

**“During the performance of a contract with the City of Pembroke Pines, Florida, the Contractor will provide Equal Benefits to its employees with spouses, as defined by Section 35.39 of the City's Code of Ordinances, and its employees with Domestic Partners and all Married Couples”.**

The posted statement must also include a City contact telephone number and email address which will be provided to each contractor when a covered contract is executed.

### **SECTION 1 DEFINITIONS**

1. **Benefits** means the following plan, program or policy provided or offered by a contractor to its employees as part of the employer's total compensation package which may include but is not limited to sick leave, bereavement leave, family medical leave, and health benefits.
2. **Cash Equivalent** mean the amount of money paid to an employee with a domestic partner or spouse in lieu of providing benefits to the employee's domestic partner or spouse. The cash equivalent is equal to the employer's direct expense of providing benefits to an employee for his or her spouse from a traditional marriage.
3. **Covered Contract** means a contract between the City and a contractor awarded subsequent to the date when this section becomes effective valued at over \$25,000 or the threshold amount required for competitive bids as required in section 35.18(A) of the Procurement Code.
4. **Domestic Partner** shall mean any two (2) adults of the same or different sex who have registered as domestic partners with a governmental body pursuant to state or local law authorizing such registration, or with an internal registry maintained by the employer of at least one of the domestic partners. A contractor may institute an internal registry to allow for the provision of equal benefits to employees with domestic partners who do not register their partnerships pursuant to a governmental body authorizing such registration, or who are

located in a jurisdiction where no such governmental domestic partnership registry exists. A contractor that institutes such registry shall not impose criteria for registration that are more stringent than those required for domestic partnership registration by the City of Pembroke Pines.

5. **Equal benefits** means the equality of benefits between employees with spouses and/or dependents of spouses and employees with domestic partners and/or dependents of domestic partners, and/or between spouses of employees and/or dependents of spouses and domestic partners of employees and/or dependents of domestic partners.
6. **Spouse** means one member of a married pair legally married under the laws of any state within the United States of America or any other jurisdiction under which such marriage is legally recognized, irrespective of gender.
7. **Traditional marriage** means a marriage between one man and one woman.

## SECTION 2 CERTIFICATION OF CONTRACTOR

The firm providing a response, by virtue of the signature below, certifies that it is aware of the requirements of Section 35.39 "City Contractors providing Equal Benefits for Domestic Partners and all Married Couples" of the City's Code of Ordinances, and certifies the following (**Check only one box below**):

- ☒ **A.** Contractor currently complies with the requirements of this section; or
- ☐ **B.** Contractor will comply with the conditions of this section at the time of contract award; or
- ☐ **C.** Contractor will not comply with the conditions of this section at the time of contract award:  
or
- ☐ **D.** Contractor does not comply with the conditions of this section because of the following allowable exemption (**Check only one box below**):
- ☐ **1.** The Contractor does not provide benefits to employees' spouses in traditional marriages;
- ☐ **2.** The Contractor provides an employee the cash equivalent of benefits because the Contractor is unable to provide benefits to employees' Domestic Partners or spouses despite making reasonable efforts to provide them. To meet this exception, the Contractor shall provide a notarized affidavit that it has made reasonable efforts to provide such benefits. The affidavit shall state the efforts taken to provide such benefits and the amount of the cash equivalent. Cash equivalent means the amount of money paid to an employee with a Domestic Partner or spouse rather than providing benefits to the employee's Domestic Partner or spouse. The cash equivalent is equal to the employer's direct expense of providing benefits to an employee's spouse;
- ☐ **3.** The Contractor is a religious organization, association, society, or any non-profit charitable or educational institution or organization operated supervised or controlled by or in conjunction with a religious organization, association, or society;
- ☐ **4.** The Contractor is a governmental agency;

**The certification shall be signed by an authorized officer of the Contractor. Failure to provide such certification (by checking the appropriate boxes above along with completing the information below) shall result in a Contractor being deemed non-responsive.**

COMPANY NAME: **INGEMEL SA LLC**

AUTHORIZED OFFICER NAME / SIGNATURE: **MARIA CRISTINA MORALES**

**Supplier: INGEMEL SA LLC**



City of Pembroke Pines

Attachment L

**SCRUTINIZED COMPANY CERTIFICATION  
PURSUANT TO FLORIDA STATUTE § 287.135**

I, **MARIA CRISTINA** on behalf of **INGEMEL SA LLC**,  
**MORALES**,  
 Print Name and Title Company Name

certify that **INGEMEL SA LLC**  
 Company Name

1. Does not participate in a boycott of Israel; and
2. Is not on the Scrutinized Companies that Boycott Israel list; and
3. Is not on the Scrutinized Companies with Activities in Sudan List; and
4. Is not on the Scrutinized Companies with Activities in the Iran Petroleum Energy Sector List; and
5. Has not engaged in business operations in Syria.

Submitting a false certification shall be deemed a material breach of contract. The City shall provide notice, in writing, to the Contractor of the City's determination concerning the false certification. The Contractor shall have ninety (90) days following receipt of the notice to respond in writing and demonstrate that the determination of false certification was made in error. If the Contractor does not demonstrate that the City's determination of false certification was made in error then the City shall have the right to terminate the contract and seek civil remedies pursuant to Florida Statute § 287.135.

Section 287.135, Florida Statutes, prohibits the City from: 1) Contracting with companies for goods or services in any amount if at the time of bidding on, submitting a proposal for, or entering into or renewing a contract if the company is on the Scrutinized Companies that Boycott Israel List, created pursuant to Section 215.4725, F.S. or is engaged in a boycott of Israel; and 2) Contracting with companies, for goods or services over \$1,000,000.00 that are on either the Scrutinized Companies with activities in the Iran Petroleum Energy Sector list, created pursuant to s. 215.473, or are engaged in business operations in Syria.

As the person authorized to sign on behalf of the Contractor, I hereby certify that the company identified above in the section entitled "Contractor Name" does not participate in any boycott of Israel, is not listed on the Scrutinized Companies that Boycott Israel List, is not listed on either the Scrutinized Companies with activities in the Iran Petroleum Energy Sector List, and is not engaged in business operations in Syria. I understand that pursuant to section 287.135, Florida Statutes, the submission of a false certification may subject the company to civil penalties, attorney's fees, and/or costs. I further understand that any contract with the City for goods or services may be terminated at the option of the City if the company is found to have submitted a false certification or has been placed on the Scrutinized Companies with Activities in Sudan list or the Scrutinized Companies with Activities in the Iran Petroleum Energy Sector List.

**INGEMEL SA LLC**

Company Name

**MARIA CRISTINA  
MORALES**

Print Name / Signature

**OPERATIONS MANAGER**

Title



3		4
---	--	---