

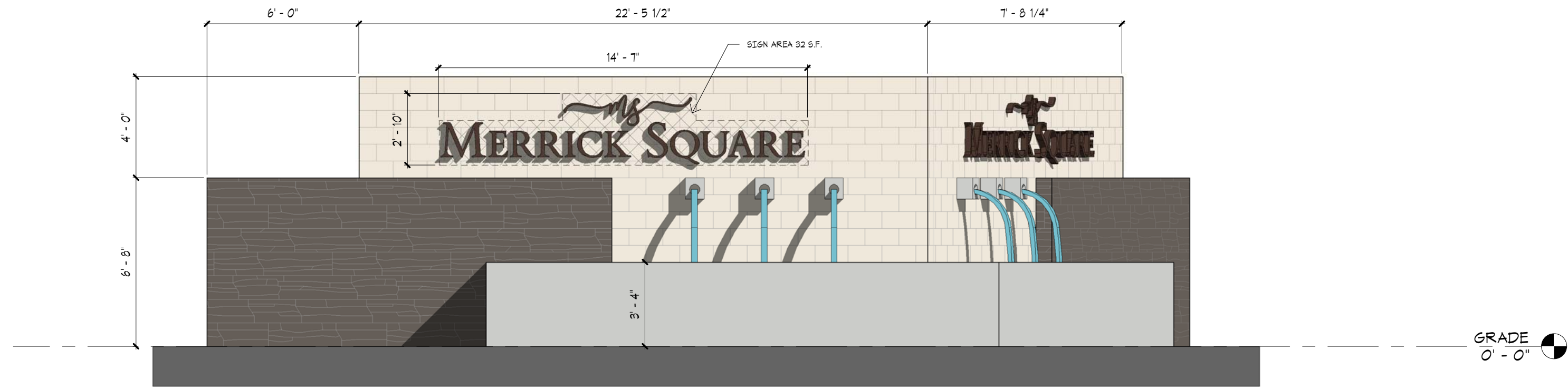
# MERRICK SQUARE SIGN PACKAGE

PREPARED FOR DR HORTON, INC.

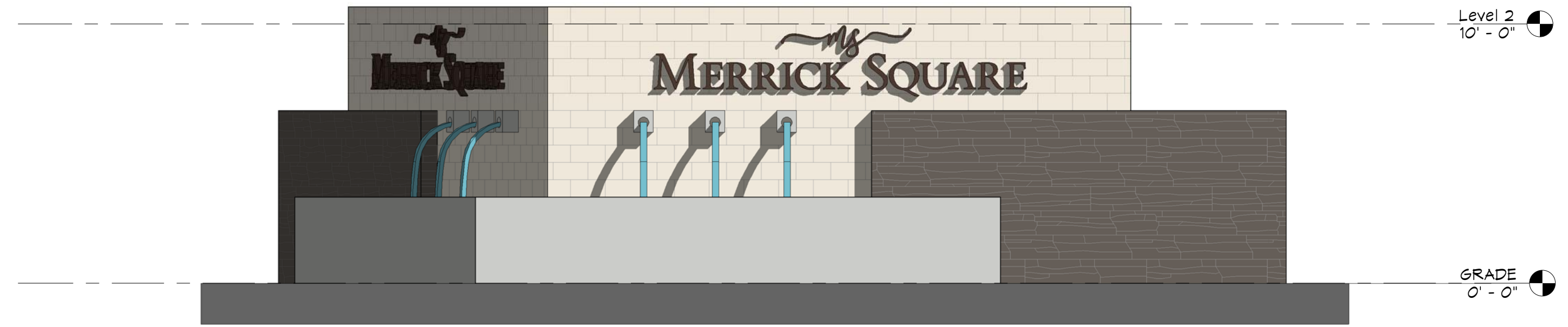
## SIGN DETAILS PACKAGE CONTENTS:

1. SW 172<sup>nd</sup> AVENUE /MAIN ENTRANCE MONUMENT SIGN PLAN
2. SW 172<sup>nd</sup> AVENUE /MAIN ENTRANCE MONUMENT SIGN COLORS, DIMENSIONS AND LOCATION
3. PINES BOULEVARD /SECONDARY ENTRANCE MONUMENT SIGN PLAN
4. PINES BOULEVARD /SECONDARY ENTRANCE MONUMENT SIGN COLORS, DIMENSIONS AND LOCATION
5. TEMPORARY SIGN GRAPHICS AND DIMENSIONS
6. TEMPORARY "COMING SOON" SIGN LOCATIONS
7. TEMPORARY MODEL HOME SALES OFFICE SIGN AND MODEL TRAP DETAILS

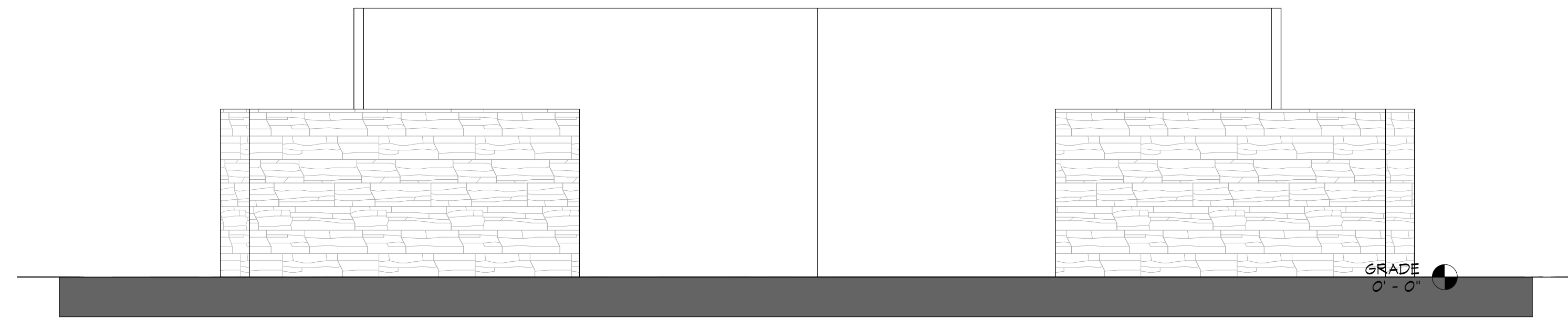
1:DR HORTONMERRICK TONNOMESACAD5F ENTRY MONUMENT.DWG



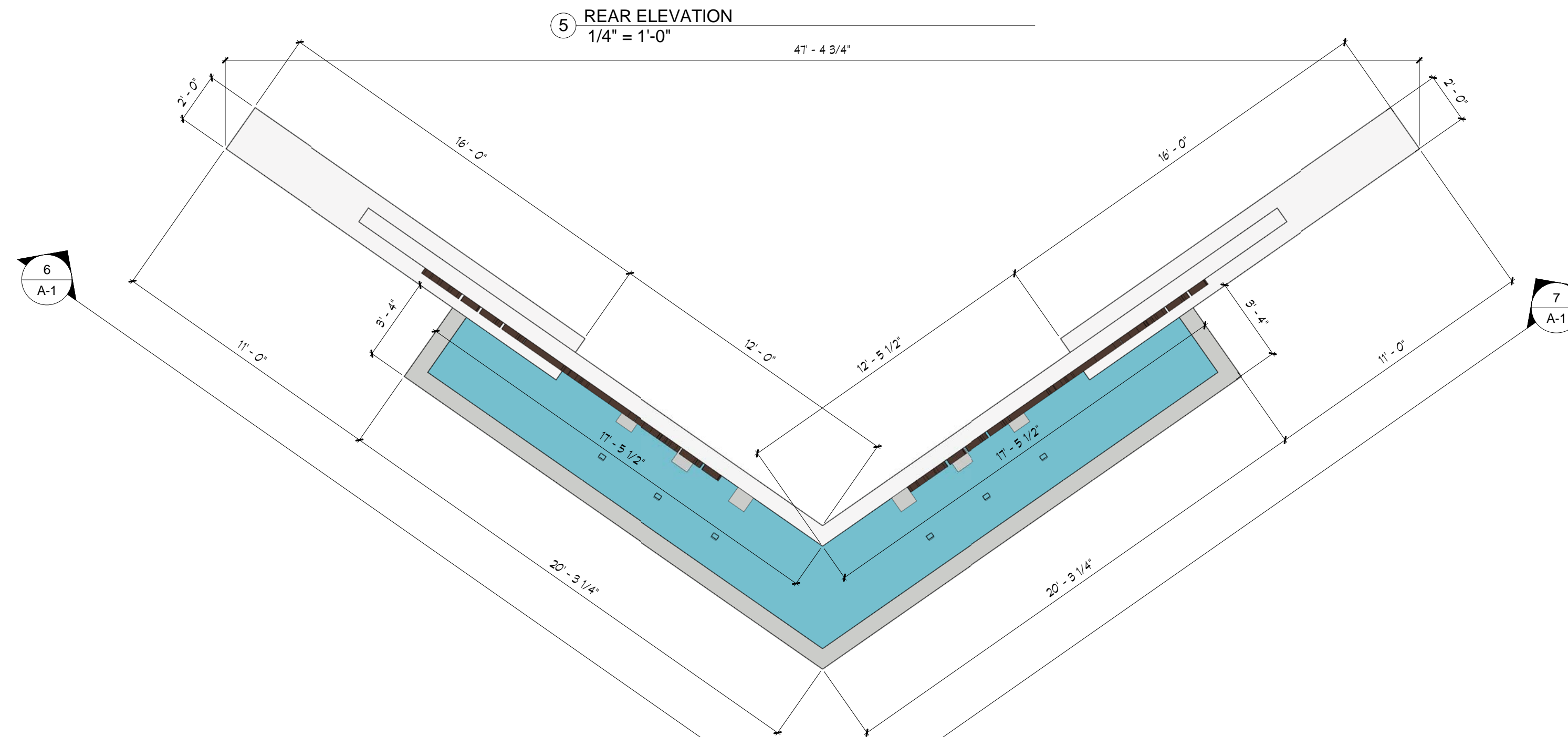
6 RIGHT  
1/4" = 1'-0"



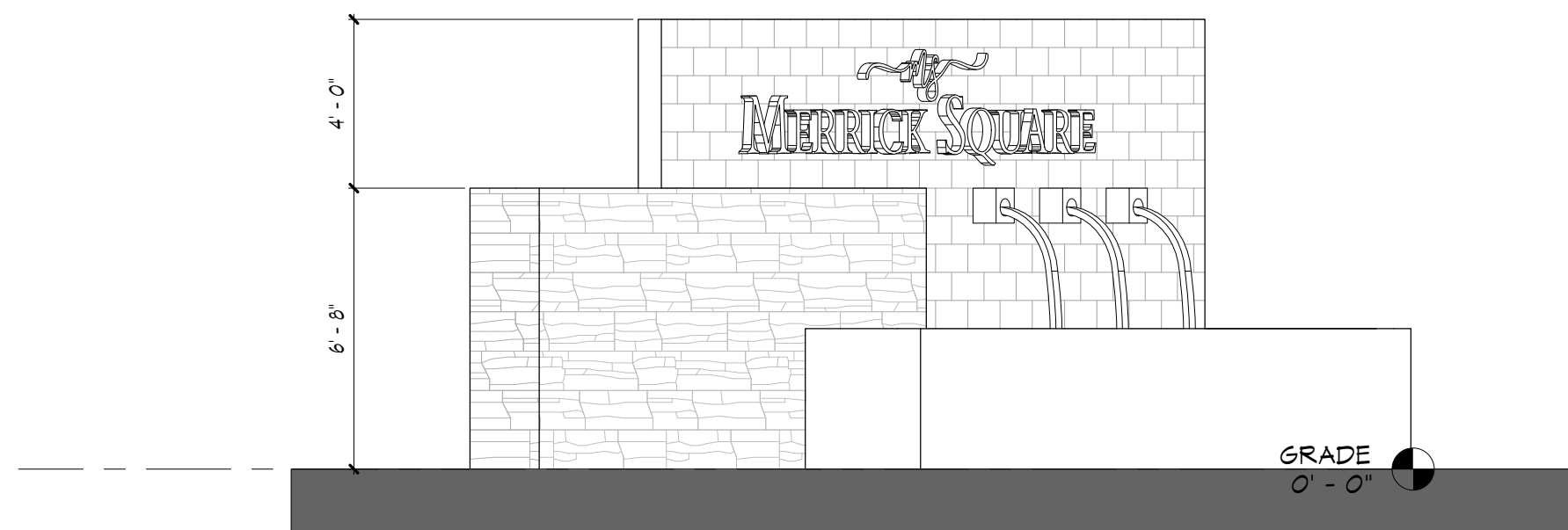
7 LEFT  
1/4" = 1'-0"



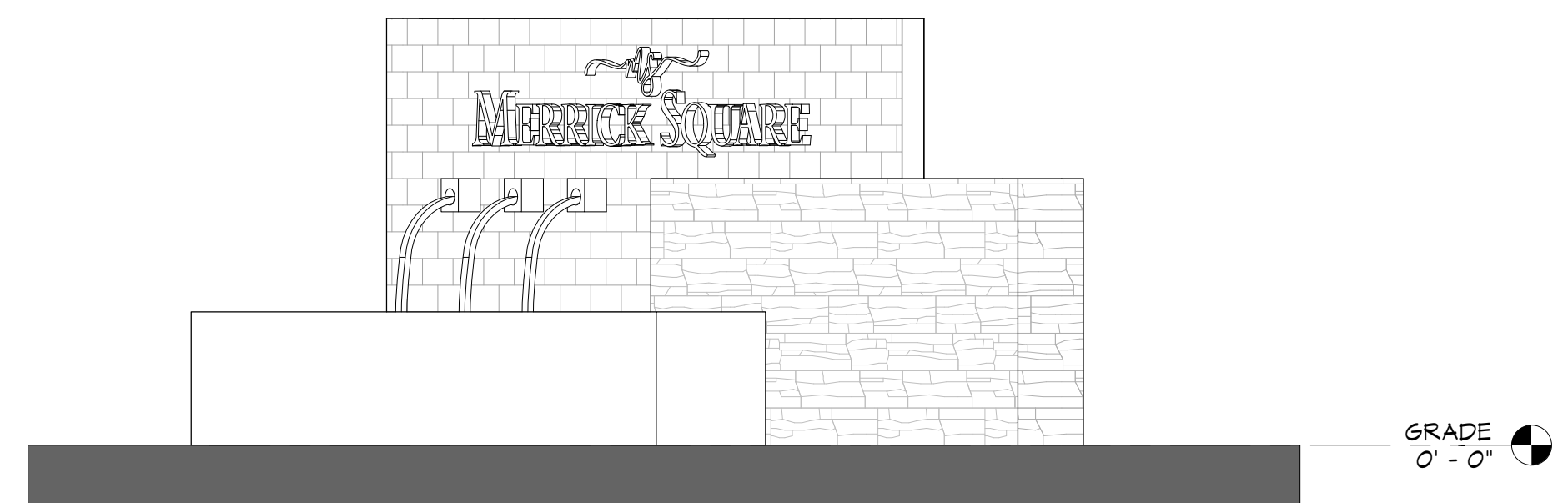
5 REAR ELEVATION  
1/4" = 1'-0"



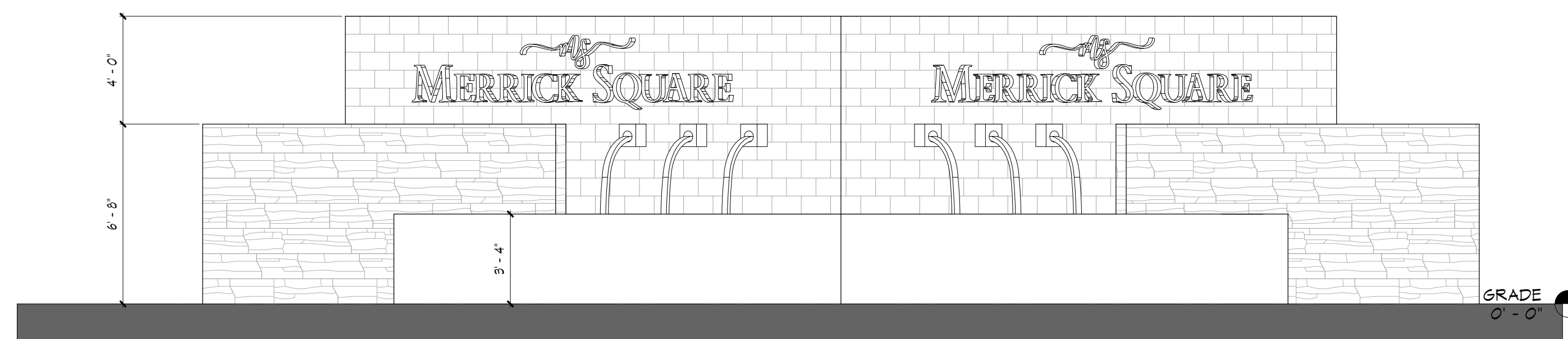
1 PLAN VIEW  
1/4" = 1'-0"



3 LEFT SIDE ELEVATION  
1/4" = 1'-0"



4 RIGHT SIDE ELEVATION  
1/4" = 1'-0"



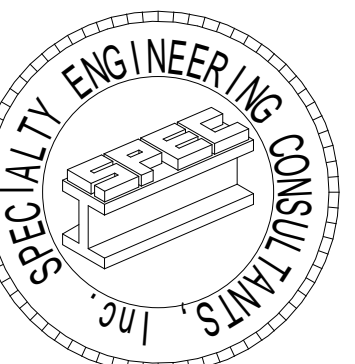
2 FRONT ELEVATION  
1/4" = 1'-0"

## PROJECT MONUMENT

SHEET INFORMATION

PROJECT INFORMATION  
MERRICK  
PEMBROKE PINES, FLORIDA

**D.R. HORTON**  
America's Builder  
www.drhorton.com  
6123 LYONS ROAD, COCONUT CREEK, FL 33073 Tel: (954) 946-3000 Fax: (954) 928-8921



SPECIALTY ENGINEERING  
CONSULTANTS, Inc.

1599 SW 30th AVE.  
SUITE #20  
BOYNTON BEACH, FL 33426

DADE - BROWARD - PALM BEACH  
FL, CA. #009217

561 - 752 - 5440 OFFICE  
561 - 752 - 5542 FAX

FILE NAME:

SCALE

DATE 1/11/2021

RVD. BY Checker

DRWN. BY Author

REVISION SCHEDULE  
NO DATE Description

SEAL  
D. ADAM LeBLANC, PE FL #77012

SHEET #

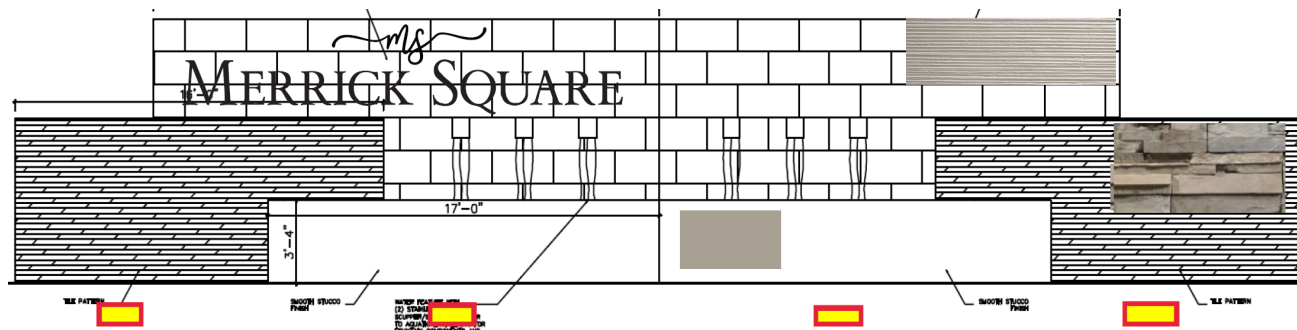
A-1

# Merrick Square

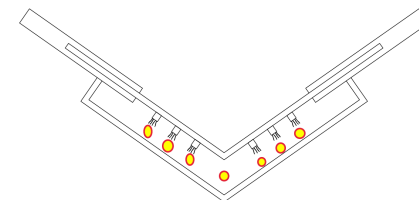
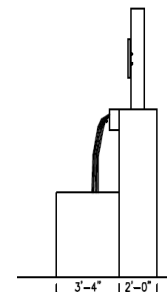
ENTRY WALL  
MAIN ENTRANCE

## WATER FEATURE

Pembroke Pines



spot light in the water area



LIGHT UP FROM THE WATER

ENVIRONMENTAL  
**STONEWORKS®**



Pheasant  
ProStack Lite



SW 7045  
**Intellectual Gray**

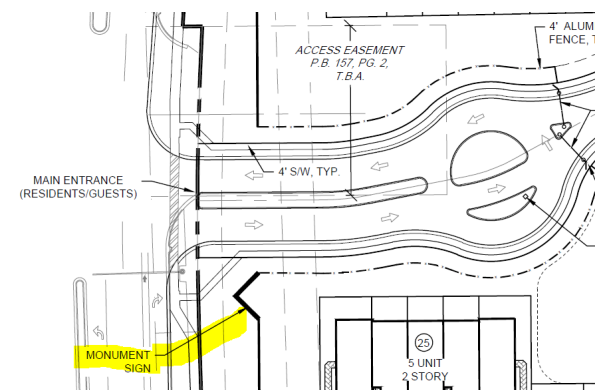
**daltile®**

Wall Tile - Linear

16" x 48" R



MT12 Off White  
Linear



*ms*  
**MERRICK SQUARE**

LOGO COLOR BLACK



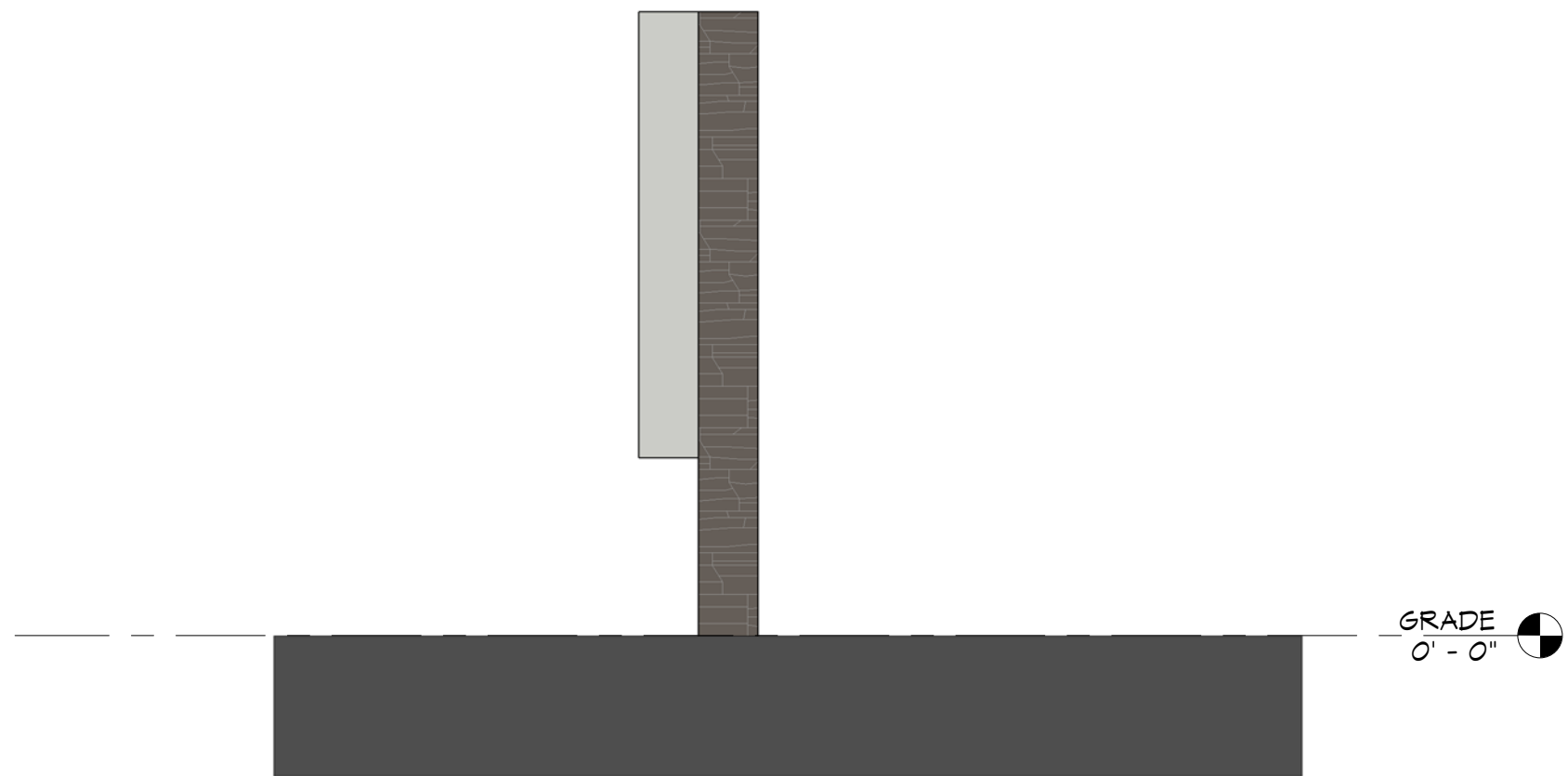
**Nuvo Lighting 65/535 7\"W LED**  
**Total of 4**

Merrick Square · Pembroke Pines, FL · [drhorton.com](http://drhorton.com)

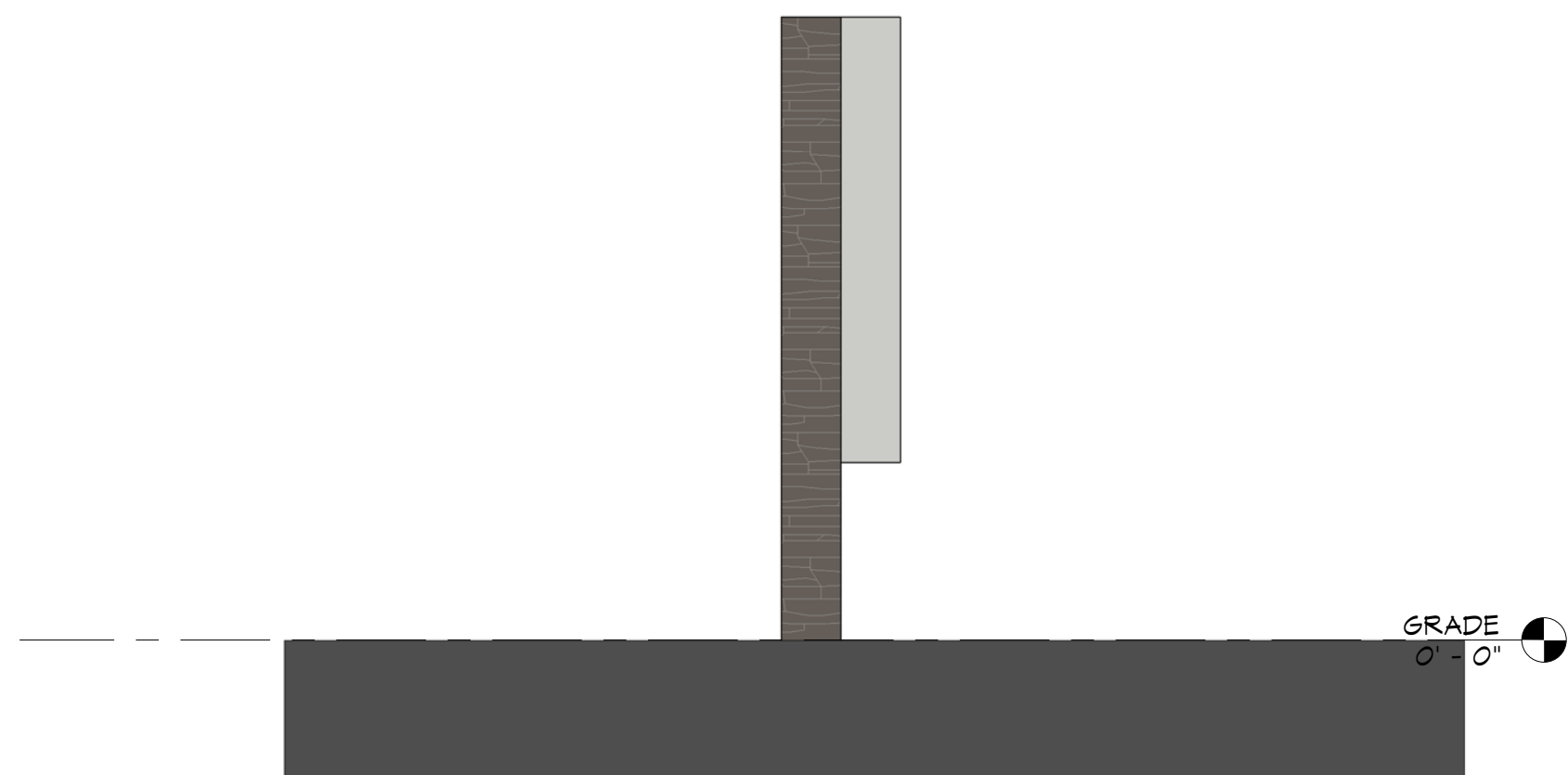
DATED 9/16/2020

D.R. Horton is equal housing opportunity builder. This map is a schematic for exhibition purposes only and does not represent the exact location or configuration of site features, lot lines, easements, amenities, units, buildings or details shown thereon. All homesite sizes are approximate and may vary. All information on this map, including availability and delivery dates is subject to change without notice or obligation. Florida Certified General Contractor #CGC059394

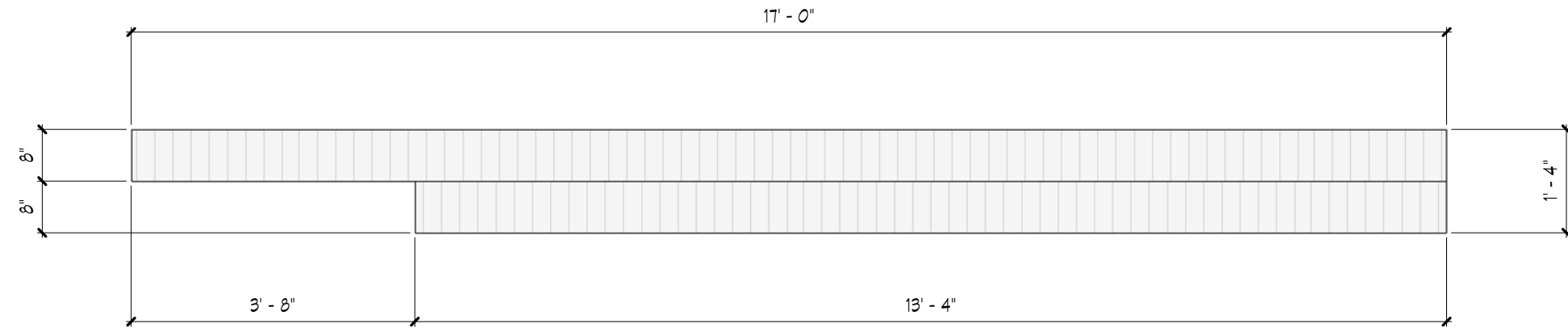




④ RIGHT SIDE ELEVATION  
1/2" = 1'-0"



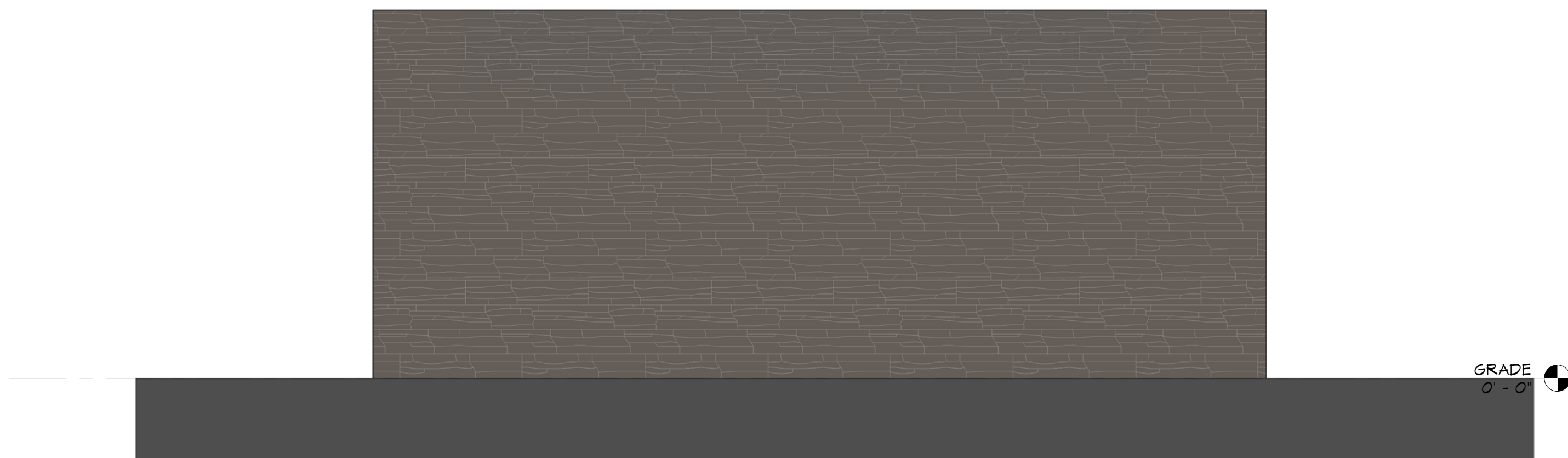
③ LEFT SIDE ELEVATION  
1/2" = 1'-0"



① PLAN VIEW  
1/2" = 1'-0"



② FRONT ELEVATION  
1/2" = 1'-0"



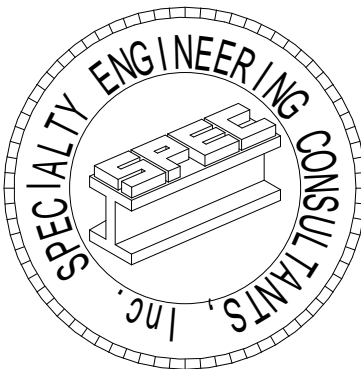
⑤ REAR ELEVATION  
1/2" = 1'-0"

ENTRY SIGN

SHEET INFORMATION

PROJECT INFORMATION  
MERRICK  
PEMBROKE PINES, FLORIDA

**D.R. HORTON**  
America's Builder  
www.drhorton.com  
6123 LYONS ROAD, COCONUT CREEK, FL 33073 Tel: (954) 946-3000 Fax: (954) 928-8921



SPECIALTY ENGINEERING  
CONSULTANTS, Inc.

1599 SW 30th AVE.  
SUITE #20  
BOYNTON BEACH, FL 33426

DADE - BROWARD - PALM BEACH  
FL, CA. #009217

561 - 752 - 5440 OFFICE  
561 - 752 - 5542 FAX

FILE NAME:

SCALE

DATE 1/11/2021

RVD. BY Checker

DRWN. BY Author

REVISION SCHEDULE  
NO DATE Description

SEAL  
D. ADAM LeBLANC, PE FL #77012

SHEET #

A-1

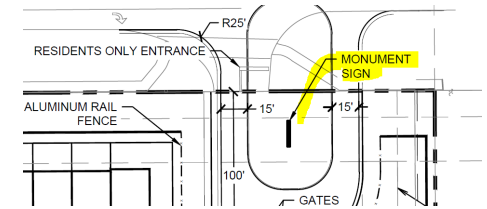
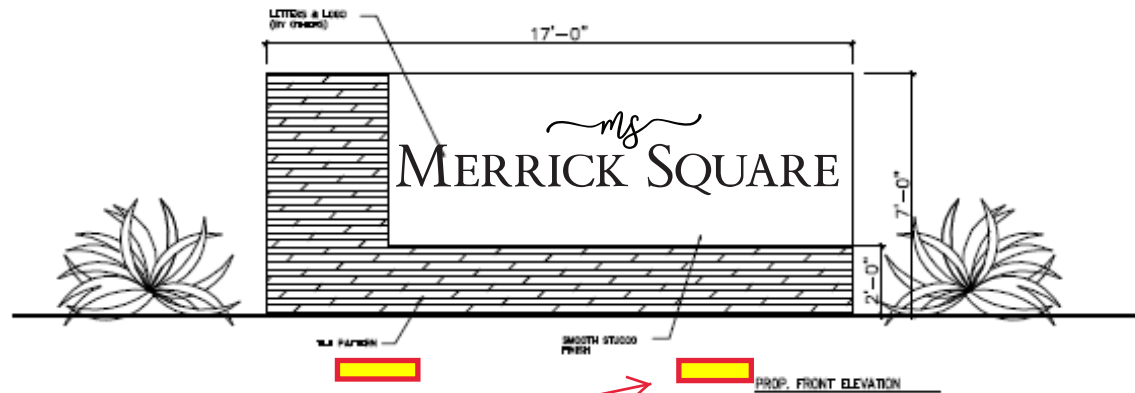


# Merrick Square

Pembroke Pines

ENTRY WALL 2  
RESIDENTS ONLY ENTRANCE

DOUBLE SIDED



Nuvo Lighting 65/535 7"W LED  
Total of 4



Pheasant  
ProStack Lite



SW 7045  
Intellectual Gray

*ms*  
**MERRICK SQUARE**

LOGO COLOR BLACK

Merrick Square · Pembroke Pines, FL · drhorton.com

D.R. Horton is equal housing opportunity builder. This map is a schematic for exhibition purposes only and does not represent the exact location or configuration of site features, lot lines, easements, amenities, units, buildings or details shown thereon. All homesite sizes are approximate and may vary. All information on this map, including availability and delivery dates is subject to change without notice or obligation. Florida Certified General Contractor #CGC059394

# Merrick Square

Pembroke Pines



TEMPORARY "COMING SOON"  
SIGNAGE (2 TOTAL) 48" x 90" =  
32 SQ. FT  
STREET FRONTAGE LOCATIONS  
NOTED ON SEPARATE GRAPHIC



MODEL INFORMATION (4 TOTAL)  
18" x 24" = 3 SQ FT  
MODEL TRAP LOCATION NOTED  
ON SEPARATE GRAPHIC

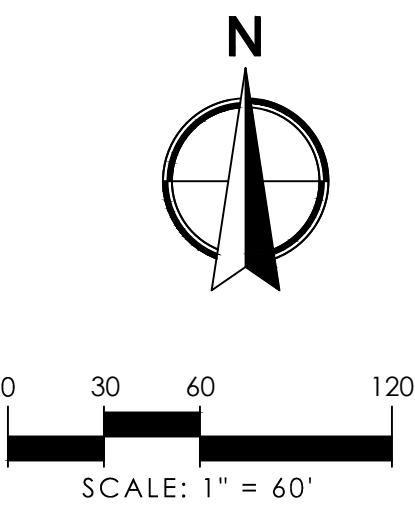
Merrick Square · Pembroke Pines, FL · [drhorton.com](http://drhorton.com)

D.R. Horton is equal housing opportunity builder. This map is a schematic for exhibition purposes only and does not represent the exact location or configuration of site features, lot lines, easements, amenities, units, buildings or details shown thereon. All homesite sizes are approximate and may vary. All information on this map, including availability and delivery dates is subject to change without notice or obligation. Florida Certified General Contractor #CGC059394





**TEMPORARY "COMING SOON" SIGNAGE**  
**(2 total) 4' x 7.5'**





# Merrick Square

Pembroke Pines

- TEMPORARY MODEL TRAP FENCE
- TEMPORARY MODEL SIGNAGE LOCATION
- MODEL VISITORS PARKING LOCATION

Building #36: Temporary Sales Model Units and Sales Office



Merrick Square · Pembroke Pines, FL · [drhorton.com](http://drhorton.com)

D.R. Horton is equal housing opportunity builder. This map is a schematic for exhibition purposes only and does not represent the exact location or configuration of site features, lot lines, easements, amenities, units, buildings or details shown thereon. All homesite sizes are approximate and may vary. All information on this map, including availability and delivery dates is subject to change without notice or obligation. Florida Certified General Contractor #CGC059394