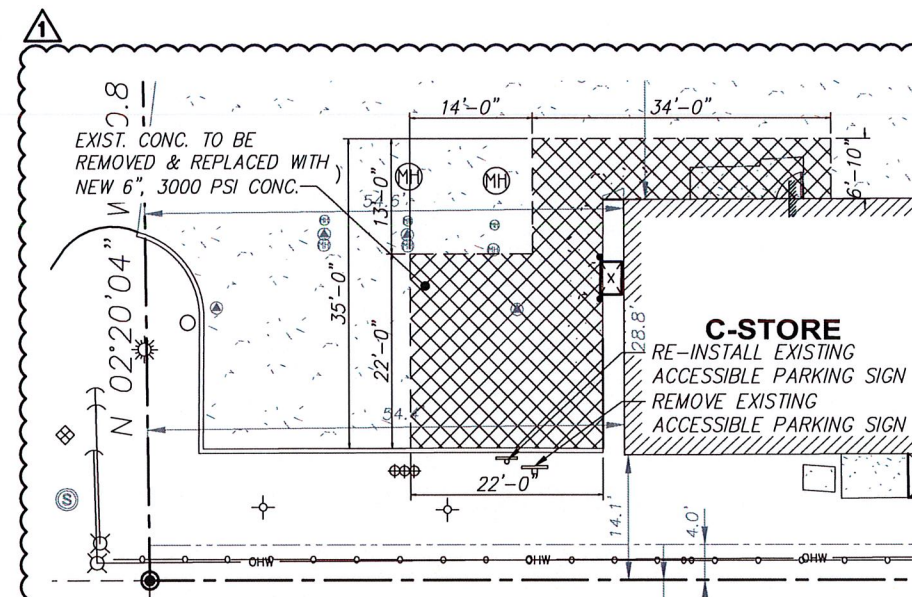


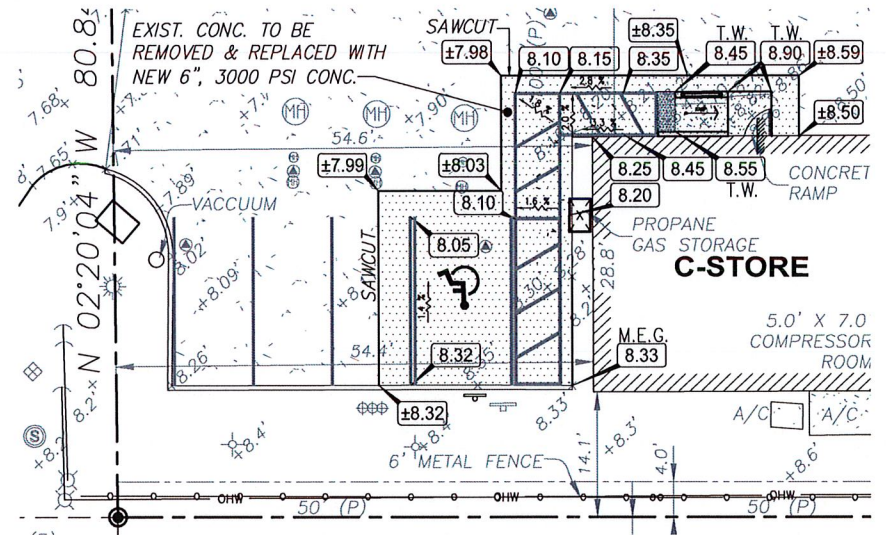
SIGN RE-IMAGING, SYNERGY RE-BRANDING & AREA LIGHTING REWORKS

SCALE: 1:20



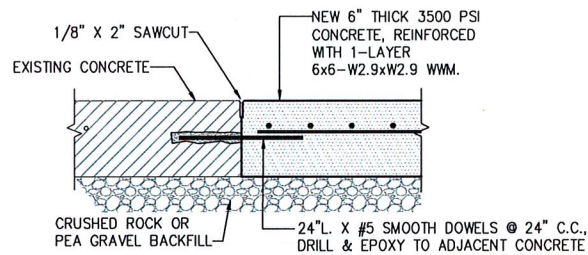
PARTIAL SITE PLAN - DEMO

SCALE: 1:10 SEE SCOPE NOTES (1) & (3)

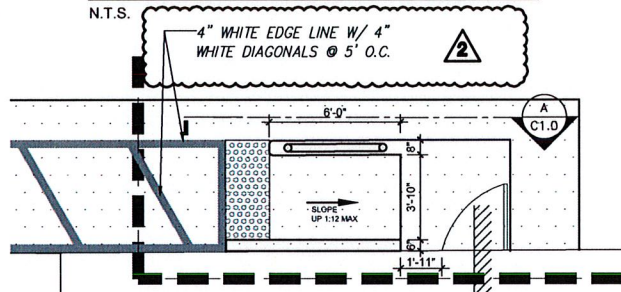


PARTIAL SITE PLAN - GRADING

SCALE: 1:10 SEE SCOPE NOTES (1) & (3)

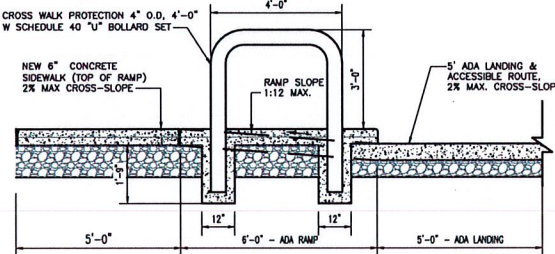


CONCRETE DRIVEWAY REPAIR



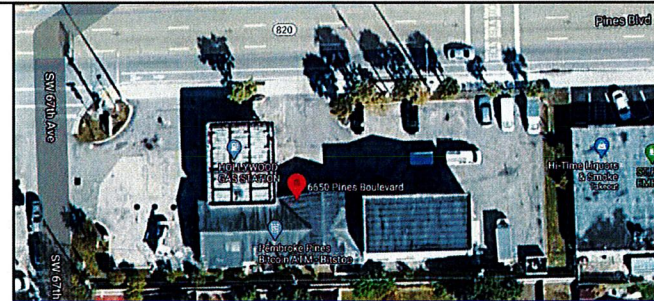
ENLARGED ADA RAMP AREA

SCALE: 1/4" = 1'-0"



A RAMP & CROSS-WALK PROTECTION

N.T.S.



PROJECT: MOBIL GAS STATION
6650 PINES BLVD
PEMBROKE PINES, FL 33024

ENGINEERING: DAIMIAN LESLIE, P.E.
MDM SERVICES, INC.
2151 W HILLSBORO BLVD, STE. 401
DEERFIELD BEACH, FL 33442
(954) 427-3076

OWNER: SUNSHINE GASOLINE DISTRIBUTORS
1650 NW 8th AVENUE
MIAMI, FL 33172

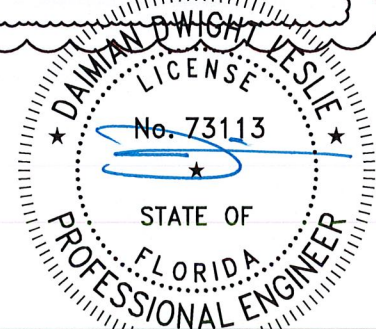
ATTN: MARIO ZAMORA
(786) 606-0917

DRAWING INDEX:

- SHEET C-1 SIGN RE-IMAGING, SYNERGY RE-BRANDING & AREA LIGHTING REWORKS
- SHEET C-2 FUEL ISLAND RE-IMAGE/RE-BRANDING "SYNERGY"
- SHEET C-3 FUEL ISLAND RE-IMAGE "SYNERGY" DETAILS
- SHEET C-4 BUILDING RE-IMAGE/ELEVATIONS
- SHEET C4.1 EXISTING TRASH ENCLOSURE ELEVATIONS
- SHEET C-5 SITE SIGNAGE, PAVEMENT MARKING & STRIPING
- SHEET PH-1 LIGHTING PHOTOMETRIC & LED FIXTURE REPLACEMENT DETAILS
- SHEET L-1 LANDSCAPE MONUMENT PLAN
- SHEET 1 PROPOSED ILLUMINATED MONUMENT REPLACEMENT SIGN
- SHEET 2 CANOPY LETTERS-EAST ELEVATION
- SHEET 3 CANOPY LETTERS-WEST ELEVATION
- SHEET 4 SYNERGY DISPENSER & ISLAND RE-BRANDING, TYP

SCOPE OF WORK:

- PROVIDE ALL LABOR, MATERIALS & EQUIPMENT TO COMPLETE SIGN, RE-IMAGING, SYNERGY RE-BRANDING, LIGHTING REWORKS & PAINT BUILDING PER CITY NOV SUMMARIZED AS FOLLOWS:
- REBRAND/REPLACE EXISTING MONUMENT SIGN WITH FOUNDATION PLANTING, SEE SHEETS S-1 & L-1
 - REBRAND/REPLACE EXISTING CANOPY FASCIA SIGN (TWO PLACES)
 - RE-STRIPE PAVEMENT MARKINGS PER CITY PEMBROKE PINES ENGINEERING STANDARD DETAILS. STANDARD PARKING SPACES SHALL BE A MINIMUM OF 9' X 19'. SEE DETAIL R-41, SHEET C-5.0.
 - INSTALL MOBIL CORP "SYNERGY" FUEL RE-BRANDING W/NEW DISPENSER ISLAND VALANCE(S), DISPENSER ID #S AND COLUMN ACCESSORIES, SEE DETAIL AND LEGEND, SHEETS C-2.0 & C-3.0.
 - SURFACE PREP (PRESSURE WASH) & RE-PAINT BUILDING EXTERIOR, SEE ELEVATIONS & CALL-OUTS, SHEET C-4.0.
 - REPLACE EXISTING SMH LIGHTING WITH ENERGY EFFICIENT LED AREA LIGHT FIXTURES. SEE PHOTOMETRIC PLAN & DETAILS SHEET PH-1.0.
 - CLOTHING DROP OFF CONTAINER IS NOT PERMITTED PER CITY CODE & SHALL BE REMOVED FROM SITE.
 - EXISTING LED LIGHT STRIPS AROUND WINDOW PERIMETERS IS NOT PERMITTED PER CITY CODE & SHALL BE REMOVED.
 - (7) EXISTING PARKING SPACES SHALL BE RE-STRIPE; SPACES SHALL BE A MINIMUM OF 9' X 19'. (2) NEW 9' X 19' SPACE TO BE ADDED/STRIPE FOR A TOTAL OF (8) SPACES. SEE DETAIL R-41, SHEET C-5.0.
 - (2) NEW PARKING SPACES TO BE STRIPE AT MINIMUM 9' X 19' SEE DETAIL R-41, SHEET C-5.0.
 - RE-WORK/RE-CONSTRUCT EXISTING ADA ACCESSIBLE ROUTE, RAMP & PARKING SPACE TO CORRECT SLOPE, CROSS-SLOPE AND CROSS-WALK PROTECTION DEFICIENCIES FOR COMPLIANCE WITH 2020 FBC ACCESSIBILITY, 7TH EDITION COMPLIANCE: RAMP (1:12 MAX. R-SLOPE, 2% MAX. X-SLOPE); PARKING SPACE, (2% MAX. SLOPE ANY DIRECTION) AND ACCESSIBLE ROUTE (2% MAX. X-SLOPE) --- SEE CITY DETAIL R-32, SHEET C-5, FOR CITY STANDARD ADA ACCESSIBLE PARKING SPACE DETAIL.



SITE PLAN AND AREA LIGHTING REWORKS

BY: JLC

REVISION:

DATE: 07-02-2020

SCALE: AS NOTED

DRAWN BY: JLC

CHECKED BY: JLC

APPROVED BY: JLC

DATE: 07-02-2020

PROPOSED GRADES BY: JLC

S.S.#

Do Not Scale-Use Dimensions Only

* To be used in conjunction with the MDM logo and the MDM logo is the property of MDM Services, Inc.

MDM

engineering • environmental • construction

2151 W HILLSBORO BLVD, STE. 401, DEERFIELD BEACH, FL 33442

(954) 427-3076

PLANS PREPARED BY:

DATE: 07-02-2020

PROPOSED GRADES BY: JLC

S.S.#

Do Not Scale-Use Dimensions Only

* To be used in conjunction with the MDM logo and the MDM logo is the property of MDM Services, Inc.

MDM

engineering • environmental • construction

2151 W HILLSBORO BLVD, STE. 401, DEERFIELD BEACH, FL 33442

(954) 427-3076

PLANS PREPARED BY:

DATE: 07-02-2020

PROPOSED GRADES BY: JLC

S.S.#

Do Not Scale-Use Dimensions Only

* To be used in conjunction with the MDM logo and the MDM logo is the property of MDM Services, Inc.

MDM

engineering • environmental • construction

2151 W HILLSBORO BLVD, STE. 401, DEERFIELD BEACH, FL 33442

(954) 427-3076

PLANS PREPARED BY:

DATE: 07-02-2020

PROPOSED GRADES BY: JLC

S.S.#

Do Not Scale-Use Dimensions Only

* To be used in conjunction with the MDM logo and the MDM logo is the property of MDM Services, Inc.

MDM

engineering • environmental • construction

2151 W HILLSBORO BLVD, STE. 401, DEERFIELD BEACH, FL 33442

(954) 427-3076

PLANS PREPARED BY:

DATE: 07-02-2020

PROPOSED GRADES BY: JLC

S.S.#

Do Not Scale-Use Dimensions Only

* To be used in conjunction with the MDM logo and the MDM logo is the property of MDM Services, Inc.

MDM

engineering • environmental • construction

2151 W HILLSBORO BLVD, STE. 401, DEERFIELD BEACH, FL 33442

(954) 427-3076

PLANS PREPARED BY:

DATE: 07-02-2020

PROPOSED GRADES BY: JLC

S.S.#

Do Not Scale-Use Dimensions Only

* To be used in conjunction with the MDM logo and the MDM logo is the property of MDM Services, Inc.

MDM

engineering • environmental • construction

2151 W HILLSBORO BLVD, STE. 401, DEERFIELD BEACH, FL 33442

(954) 427-3076

PLANS PREPARED BY:

DATE: 07-02-2020

PROPOSED GRADES BY: JLC

S.S.#

Do Not Scale-Use Dimensions Only

* To be used in conjunction with the MDM logo and the MDM logo is the property of MDM Services, Inc.

MDM

engineering • environmental • construction

2151 W HILLSBORO BLVD, STE. 401, DEERFIELD BEACH, FL 33442

(954) 427-3076

PLANS PREPARED BY:

DATE: 07-02-2020

PROPOSED GRADES BY: JLC

S.S.#

Do Not Scale-Use Dimensions Only

* To be used in conjunction with the MDM logo and the MDM logo is the property of MDM Services, Inc.

MDM

engineering • environmental • construction

2151 W HILLSBORO BLVD, STE. 401, DEERFIELD BEACH, FL 33442

(954) 427-3076

PLANS PREPARED BY:

DATE: 07-02-2020

PROPOSED GRADES BY: JLC

S.S.#

Do Not Scale-Use Dimensions Only

* To be used in conjunction with the MDM logo and the MDM logo is the property of MDM Services, Inc.

MDM

engineering • environmental • construction

2151 W HILLSBORO BLVD, STE. 401, DEERFIELD BEACH, FL 33442

(954) 427-3076

PLANS PREPARED BY:

DATE: 07-02-2020

PROPOSED GRADES BY: JLC

S.S.#

Do Not Scale-Use Dimensions Only

* To be used in conjunction with the MDM logo and the MDM logo is the property of MDM Services, Inc.

MDM

engineering • environmental • construction

2151 W HILLSBORO BLVD, STE. 401, DEERFIELD BEACH, FL 33442

(954) 427-3076

PLANS PREPARED BY:

DATE: 07-02-2020

PROPOSED GRADES BY: JLC

S.S.#

Do Not Scale-Use Dimensions Only

* To be used in conjunction with the MDM logo and the MDM logo is the property of MDM Services, Inc.

MDM

engineering • environmental • construction

2151 W HILLSBORO BLVD, STE. 401, DEERFIELD BEACH, FL 33442

(954) 427-3076

PLANS PREPARED BY:

DATE: 07-02-2020

PROPOSED GRADES BY: JLC

S.S.#

Do Not Scale-Use Dimensions Only

* To be used in conjunction with the MDM logo and the MDM logo is the property of MDM Services, Inc.

MDM

engineering • environmental • construction

2151 W HILLSBORO BLVD, STE. 401, DEERFIELD BEACH, FL 33442

(954) 427-3076

PLANS PREPARED BY:

DATE: 07-02-2020

PROPOSED GRADES BY: JLC

S.S.#

Do Not Scale-Use Dimensions Only

* To be used in conjunction with the MDM logo and the MDM logo is the property of MDM Services, Inc.

MDM

engineering • environmental • construction

2151 W HILLSBORO BLVD, STE. 401, DEERFIELD BEACH, FL 33442

(954) 427-3076

PLANS PREPARED BY:

DATE: 07-02-2020

PROPOSED GRADES BY: JLC

S.S.#

Do Not Scale-Use Dimensions Only

* To be used in conjunction with the MDM logo and the MDM logo is the property of MDM Services, Inc.

MDM

engineering • environmental • construction

2151 W HILLSBORO BLVD, STE. 401, DEERFIELD BEACH, FL 33442

(954) 427-3076

PLANS PREPARED BY:

DATE: 07-02-2020

PROPOSED GRADES BY: JLC

S.S.#

Do Not Scale-Use Dimensions Only

* To be used in conjunction with the MDM logo and the MDM logo is the property of MDM Services, Inc.

MDM

engineering • environmental • construction

2151 W HILLSBORO BLVD, STE. 401, DEERFIELD BEACH, FL 33442

(954) 427-3076

PLANS PREPARED BY:

DATE: 07-02-2020

PROPOSED GRADES BY: JLC

S.S.#

Do Not Scale-Use Dimensions Only

* To be used in conjunction with the MDM logo and the MDM logo is the property of MDM Services, Inc.

MDM

engineering • environmental • construction

2151 W HILLSBORO BLVD, STE. 401, DEERFIELD BEACH, FL 33442

(954) 427-3076

PLANS PREPARED BY:

DATE: 07-02-2020

PROPOSED GRADES BY: JLC

S.S.#

Do Not Scale-Use Dimensions Only

* To be used in conjunction with the MDM logo and the MDM logo is the property of MDM Services, Inc.

MDM

engineering • environmental • construction

2151 W HILLSBORO BLVD, STE. 401, DEERFIELD BEACH, FL 33442

(954) 427-3076

PLANS PREPARED BY:

DATE: 07-02-2020

PROPOSED GRADES BY: JLC

S.S.#

Do Not Scale-Use Dimensions Only

* To be used in conjunction with the MDM logo and the MDM logo is the property of MDM Services, Inc.

MDM

engineering • environmental • construction

2151 W HILLSBORO BLVD, STE. 401, DEERFIELD BEACH, FL 33442

(954) 427-3076

PLANS PREPARED BY:

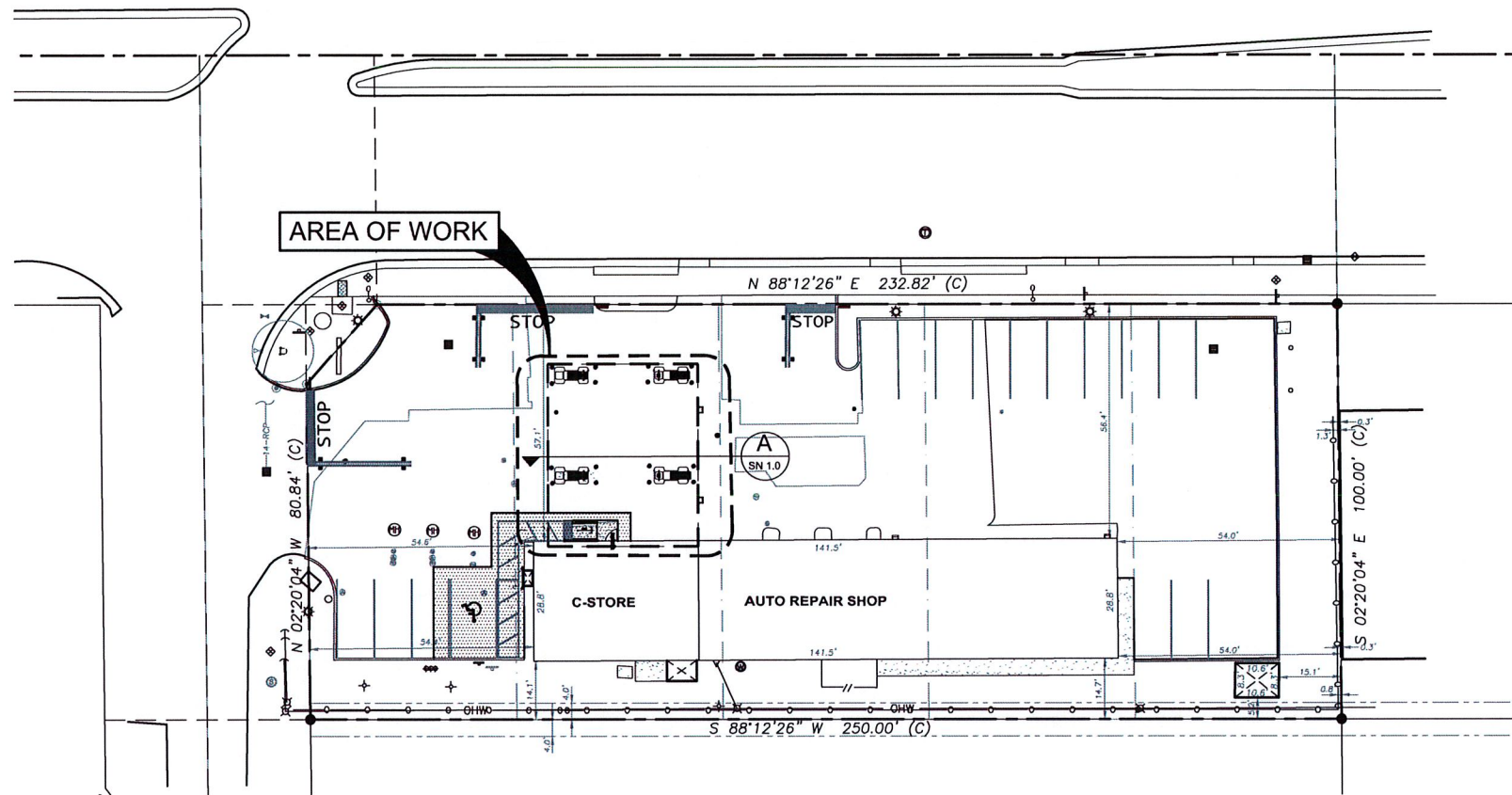
DATE: 07-02-2020

PROPOSED GRADES BY: JLC

S.S.#

Do Not Scale-Use Dimensions Only

* To be used in conjunction with the MDM logo and the MDM logo is the property of MDM Services, Inc.



FUEL ISLAND RE-IMAGE / RE-BRANDING "SYNERGY".
SCALE: 1"=20'-0"

LEGEND:

- 1 VERTICAL DISPENSER VALENCE.
- 2 HORIZONTAL DISPENSER VALENCE.
- 3 DISPENSER # ID PANEL.
- 4 CANOPY COLUMN INSTRUCTION PANEL.
- 5 LED ILLUMINATED STRIP, SEE DETAIL SHEET SN1.1

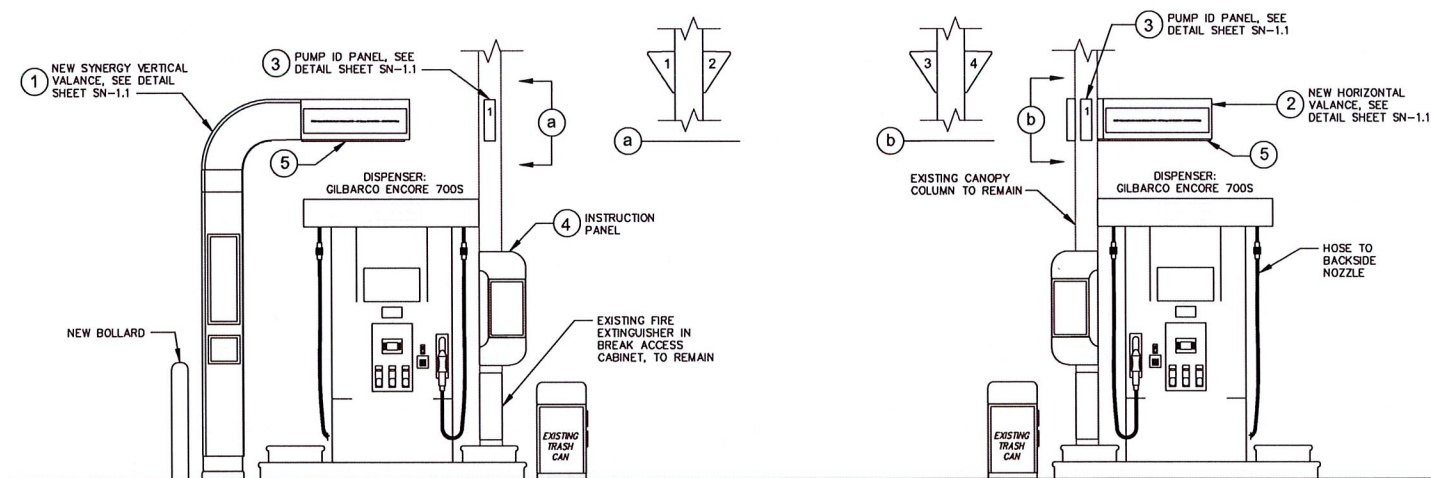
COMPLIANCE NOTES:

ALL WORK IS TO BE PERFORMED BY A LICENSED STATE OF FLORIDA CONTRACTOR. ALL ELECTRICAL WORK TO BE PERFORM BY STATE REGISTERED ELECTRICAL CONTRACTOR.

1. ALL NEW MATERIALS, AND ACCESSORIES SHALL BE INSTALLED IN ACCORDANCE WITH APPLICABLE MANUFACTURER'S INSTRUCTIONS.
2. ALL WORK SHALL BE PERFORMED IN ACCORDANCE WITH APPLICABLE STATE, COUNTY AND MUNICIPAL CODES.
3. NEW VERTICAL & HORIZONTAL VALENCES ARE DESIGNED & ANCHORED TO ACCOMMODATE ASCE 7-10, EXPOSURE C, 175 MPH V_{ult} WINDSPEED.

ELECTRICAL NOTES:

1. INSTALL 1/2" EMT OR SEALTITE FROM EXISTING J-BOX ON TOP OF CANOPY. ROUTE DOWN THROUGH CANOPY AND CONNECT TO LED STRIP(S).
2. INSTALL (3) #12 THWN CONDUCTORS (H,N,G) IN EACH CONDUIT.
3. CONNECT NEW LED STRIPS TO EXISTING CANOPY SIGN CIRCUIT.
4. INSTALL (1) "HANDLE PADLOCK ATTACHMENT" TO SIGN CIRCUIT BREAKER PER NEC 600.6(2) & 110.25.
5. TOTAL ADDITIONAL AMPS FOR (4) LED STRIP(S): $8.12 \text{ W} / 120 = .07 \text{ (PER COLUMN)} \times 4 \text{ COLUMNS} = .27 \text{ AMPS}$



A MOBIL "SYNERGY" FUEL RE-BRANDING
SN1.0 SCALE: 3/8" = 1'-0"

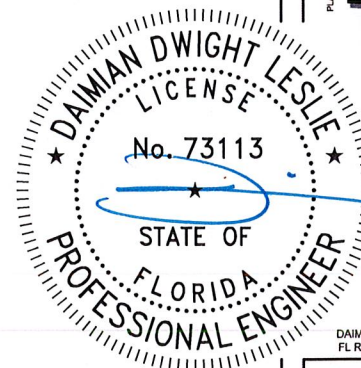
FUEL ISLAND RE-IMAGE /RE-BRANDING
"SYNERGY".

SUNSHINE GASOLINE DISTRIBUTORS
MOBIL GAS STATION
6650 PINES BLVD
PEMBROKE PINES, FL 33024

DATE	NO.	REVISION	BY

DATE: 07-03-2020	PROPOSED GRADES BY:
DRAWN BY:	S.S.#
CHECKED BY:	
APPROVED BY:	
Do Not Scale-Use Dimensions Only To the best of my knowledge, the plans and specifications submitted herein comply with all applicable laws, regulations and codes, and I am not providing any warranty or representation or implied in these plans.	

PLANS PREPARED BY:
MDM
engineering • environmental • construction
2751 W HILLSBORO AVE SUITE 100
DADE COUNTY, FL 33134
(954) 427-5076



DAIAMN DWIGHT LESLIE
FL REG # 73113

JOB # 19255

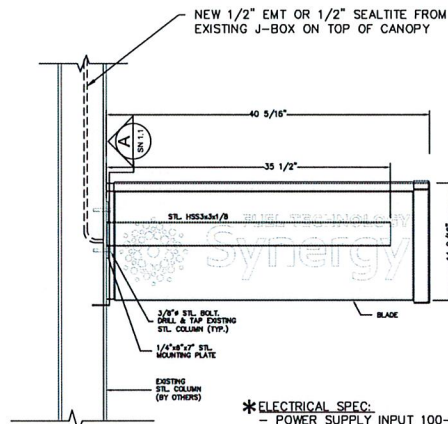
DWG # C-2



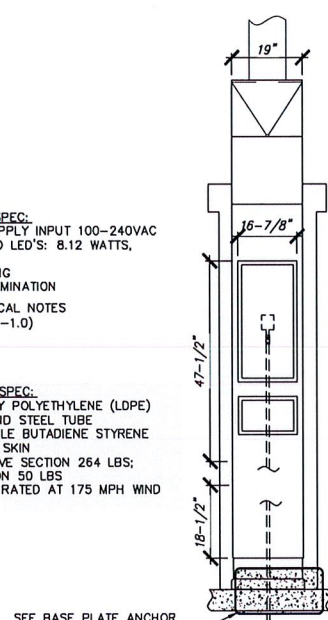
Know what's below.
Call before you dig.

SEP 20 2021

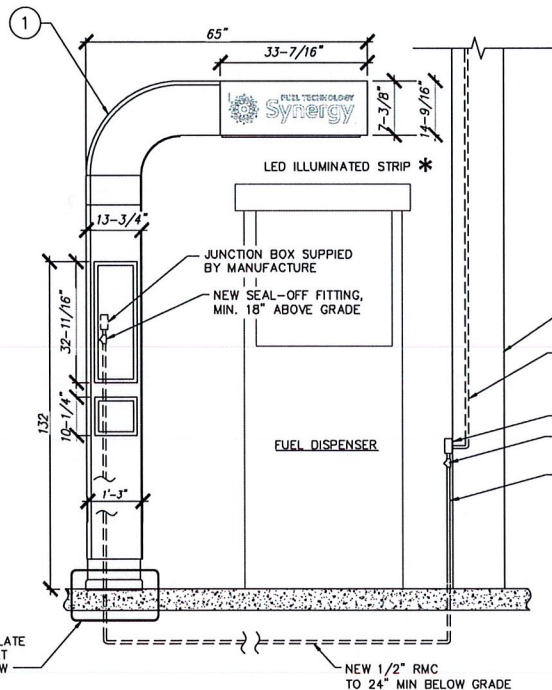
2 **HORIZONTAL VALANCE DETAIL**
SCALE:



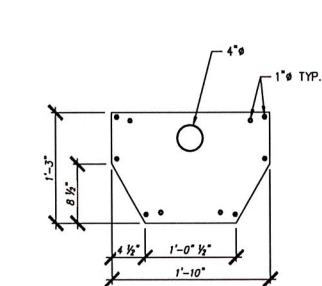
STRUCTURAL SPEC:
 -LOW DENSITY POLYETHYLENE (LDPE)
 FRAME AROUND STEEL TUBE
 -ACRYLONITRILE BUTADIENE STYRENE
 (ABS) OUTER SKIN
 -WEIGHT: WAVE SECTION 264 LBS;
 BLADE SECTION 50 LBS
 -STRUCTURE RATED AT 175 MPH WIND
 LOAD



1 VERTICAL VALANCE DETAIL
SCALE:



1 VERTICAL VALANCE DETAIL
SCALE:



End View
Scale: 1/2" = 1'

Side View
Scale: 1/2" = 1'

Mounting Detail
Scale: nts

Option number decal when this end is pointing toward the store

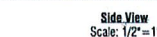
Bottom wedge clip slides under wall plate to hold bottom against wall

Height to match height of store

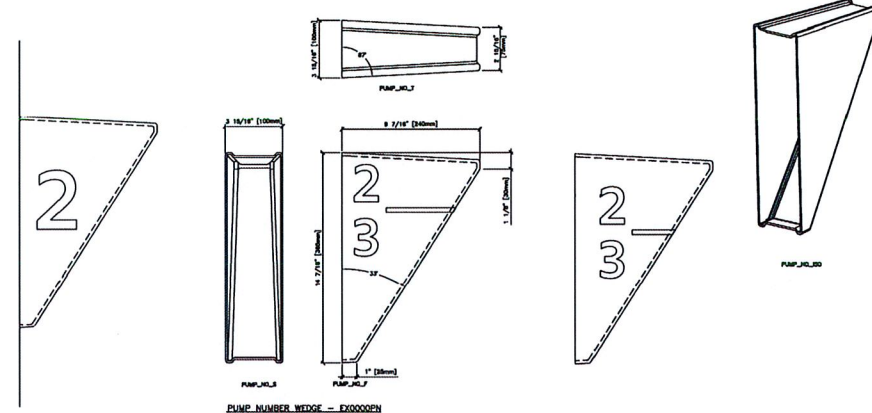
Canopy Column

Fuel Dispenser

Mounting Detail
Scale: nts



3 PUMP NUMBER ID PANEL
SCALE:



PUMP NUMBER WEDGE - EX0000PN

Back View
Scale: 1/2" = 1'

Technical drawing showing the back view of the Fuel Dispenser. The drawing includes the following dimensions and labels:

- Vertical dimension: 32-11/16"
- Horizontal dimension: 13-3/4"
- Label: "Snap Frame" with an arrow pointing to the frame.
- Label: "Poster Area: 3.13 sf"
- Label: "Total width will vary from 10" - 17-1/2"

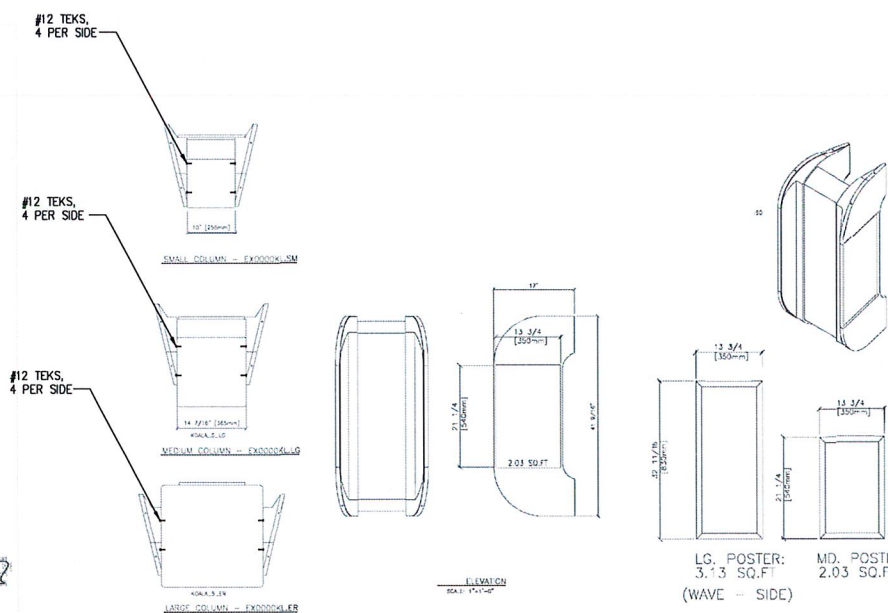
Side View
Scale: 1/2" = 1'

Technical drawing showing the side view of the Fuel Dispenser. The drawing includes the following dimensions and labels:

- Vertical dimension: 47" above grade
- Horizontal dimension: 17"
- Label: "Canopy Column"
- Label: "Poster Area: 2.03 sf"
- Label: "Fuel Dispenser"

Side View
Scale: $1/2" = 1'$

4 **COLUMN INSTRUCTION PANEL**
SCALE: NOT TO SCALE



LG. POSTER: 3.13 SQ.FT
(WAVE - SIDE)

RICHARD R. MORRIS

JOB # 19255

DWG # C-3

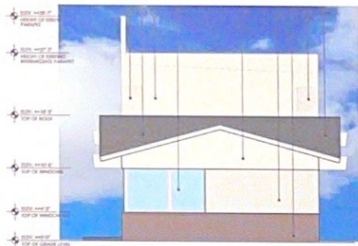
SYNERGY RE-BRANDING DETAILS

SUNSHINE GASOLINE DISTRIBUTORS

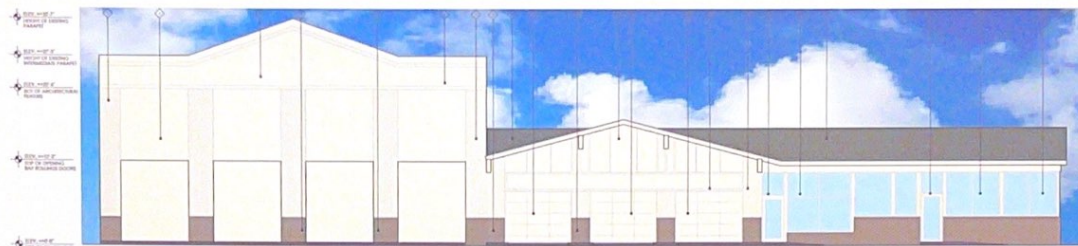
MOBIL GAS STATION

6650 PINES BLVD
PEMBROKE PINES, FL 33024

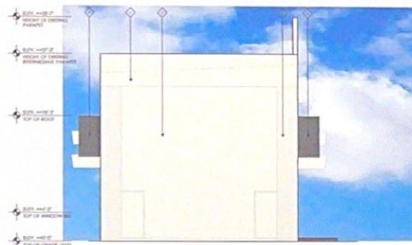
PEMBROKE PINES, FL 33024



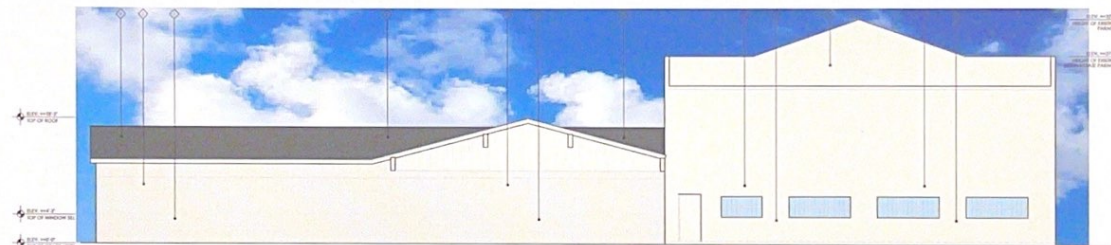
04 Building West Elevation
SCALE: 1/4"=1'-0"



01 Building North Elevation
SCALE: 1/4"=1'-0"

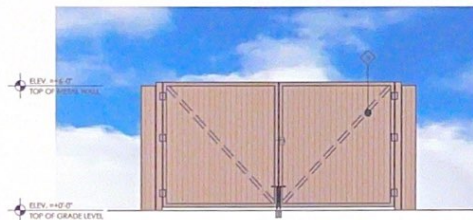


03 Building East Elevation
SCALE: 1/4"=1'-0"



02 Building South Elevation
SCALE: 1/4"=1'-0"

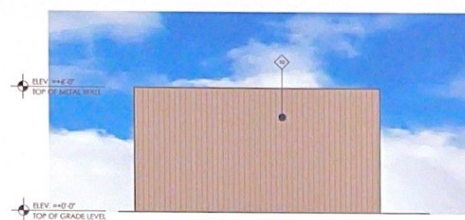
COLOR PALETTE



00 Trash Enclosure Front Elevation
SCALE: 1/2"=1'-0"



COLOR LEGEND	
PPG COLORS	
1	MOBIL OFF WHITE (PPG WH-835-S)
4	MOBIL STONE GRAY (PPG S14-S)
5	MOBIL WHITE CANOPY COLUMNS (PPG BR-WHT)
8	EXISTING STORE FRONT AND DOORS MOBIL OFF WHITE (FRAMES: PPG WH-835-S)
3	EXISTING BAY DOORS MOBIL OFF WHITE (PPG WH-835-S)
2	EXISTING SHINGLES ROOF (CHARCOAL)
10	GARAGE DOORS AT MECHANICAL BAYS MOBIL OFF WHITE (PPG WH-835-S)
6	BACK & SIDE DOORS AT MECHANICAL BAYS MOBIL OFF WHITE (PPG WH-835-S)
7	WINDOWS AT MECHANICAL BAYS MOBIL OFF WHITE (PPG WH-835-S)
9	METAL TRASH ENCLOSURE, MOBIL STONE GRAY COLOR (PPG S14-S)



01 Trash Enclosure Side & Rear Elevations
SCALE: 1/2"=1'-0"

BUILDING ELEVATIONS	
SUNSHINE GASOLINE DISTRIBUTORS	
MOBIL GAS STATION	
8666 PINE BLVD	
PEMBROKE PINES, FL 33024	

DATE	NO.	REVISION

SCALE: 1"=20'-0"	DATE: 07-01-2008
DRAWN BY: [Signature]	DESIGNED BY: [Signature]
CHECKED BY: [Signature]	U.S. # [Signature]
Do Not Scale - Use Dimensions Only	
This drawing is the property of MDM and is not to be reproduced or used in any manner without the written consent of MDM.	

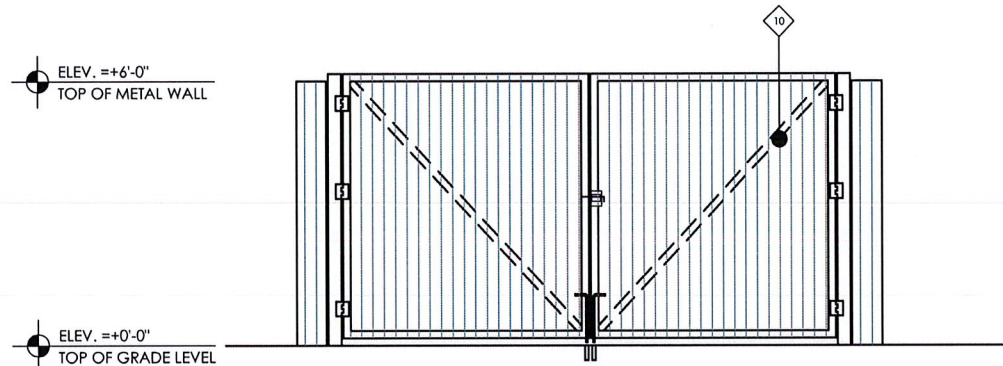


DANIEL LEBLANC
FL REG # 73113
JOB # 19255
DWG # S-5

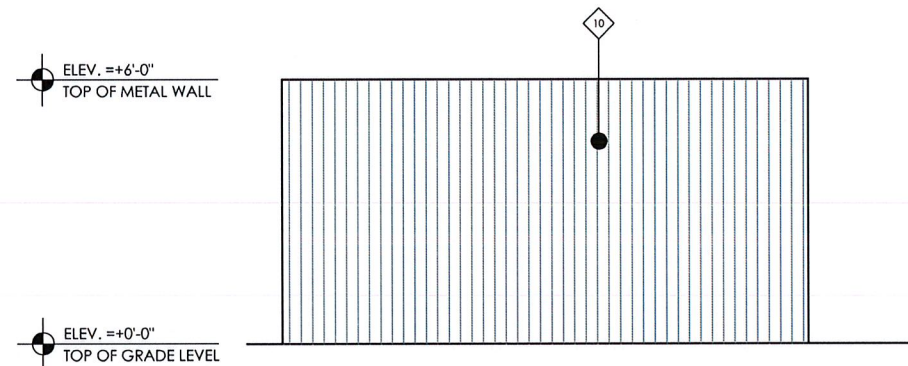


SEP 20 2021

DWG # C-4

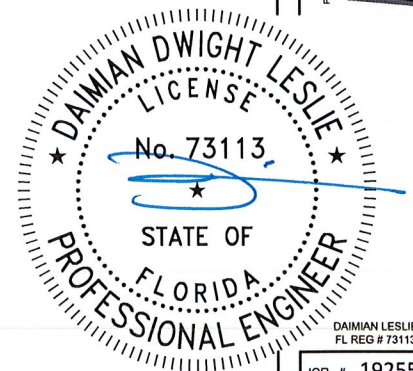


00 Trash Enclosure Front Elevation
SCALE: 1/2"=1'-0"



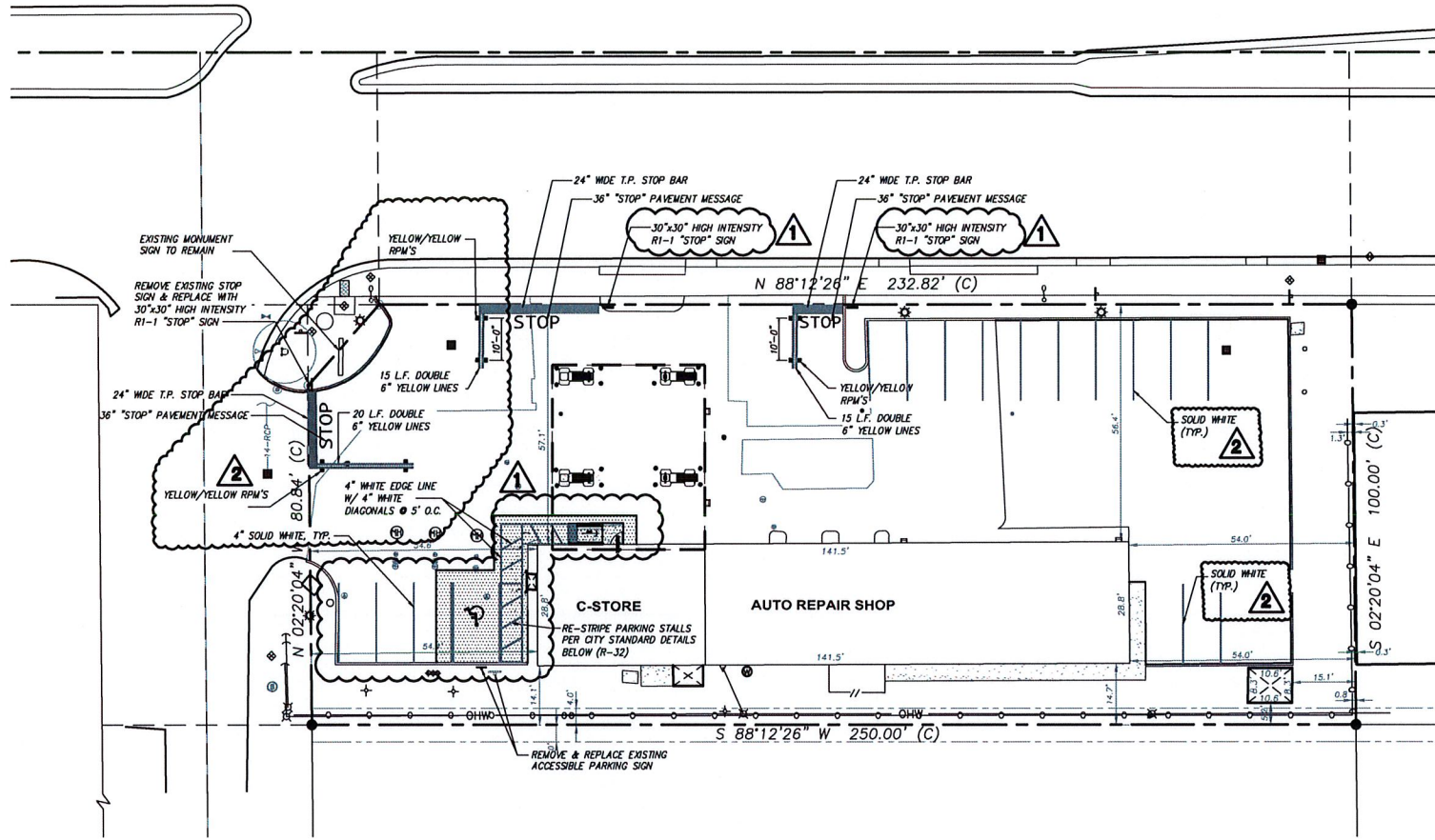
01 Trash Enclosure Side & Rear Elevations
SCALE: 1/2"=1'-0"

COLOR LEGEND	
PPG COLORS	
1	MOBIL OFF WHITE (PPG WH-835-S)
2	MOBIL STONE GRAY (PPG 516-S)
3	MOBIL WHITE, CANOPY COLUMNS (PPG [R] WHITE)
4	EXISTING STORE FRONT AND DOORS MOBIL \ OFF WHITE (FRAMES: PPG WH-835-S)
5	EXISTING BAY DOORS MOBIL OFF WHITE (PPG WH-835-S)
6	EXISTING SHINGLES ROOF (CHARCOAL)
7	GARAGE DOORS AT MECHANICAL BAYS
8	BACK & SIDE DOORS AT MECHANICAL BAYS. MOBIL OFF WHITE (PPG WH-835-S)
9	WINDOWS AT MECHANICAL BAYS
10	METAL TRASH ENCLOSURE. MOBIL STONE GRAY COLOR (PPG 516-S)



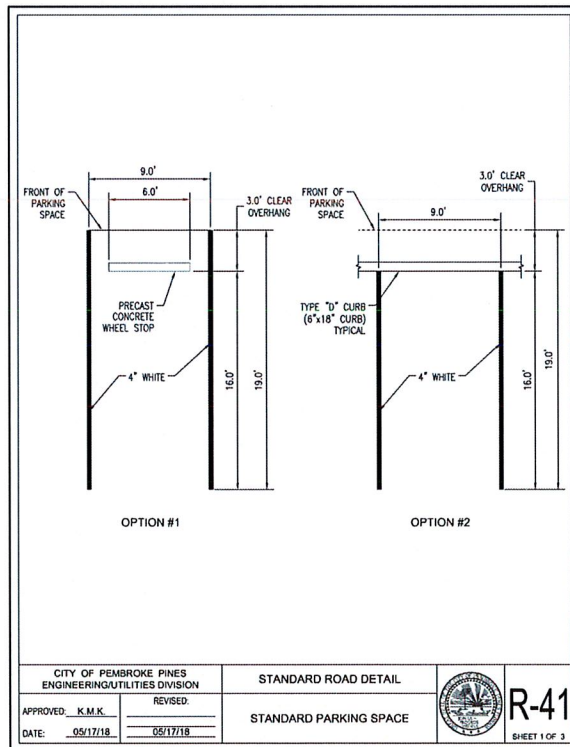
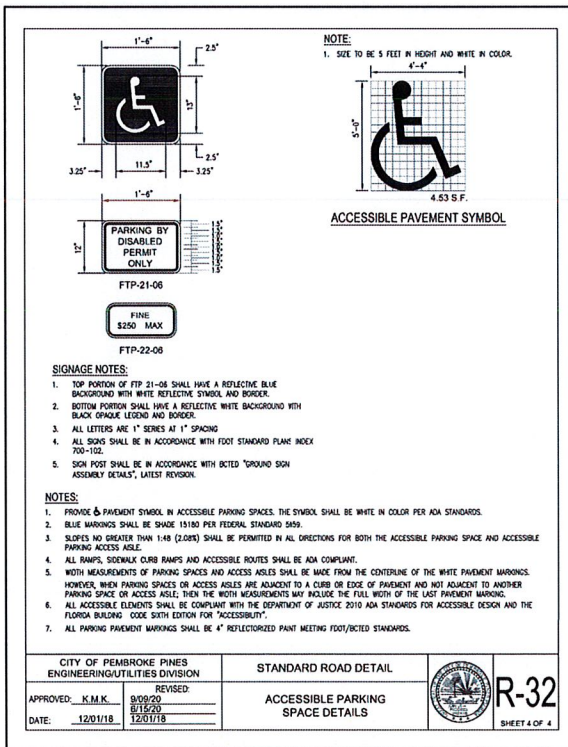
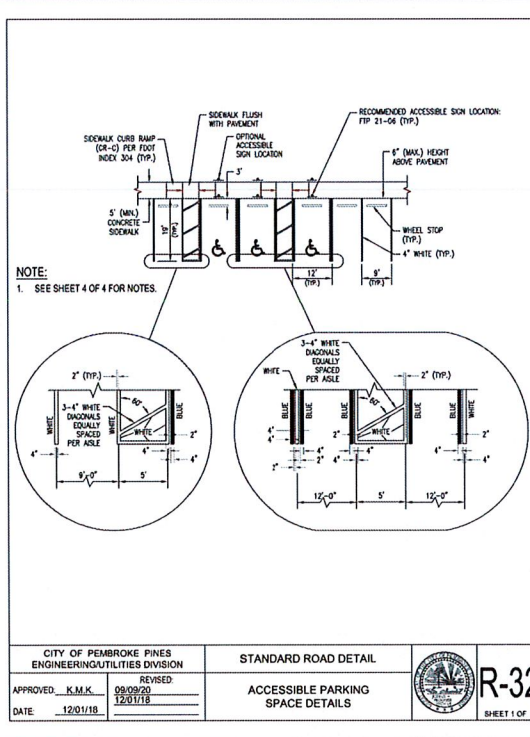
PLANS PREPARED BY: MDM Engineering & Construction 211 WILLOW STREET, SUITE 100 PACIFIC PALMS, CA 90947 (951) 427-3078		DATE: 07-02-2020 PROPOSED GRADES BY: S.S.#		CHECKED BY: S.S.#		APPROVED BY: Do Not Scale—Use Dimensions Only * To the best of my knowledge, this plan and specifications conform to the applicable building codes and provisions of the applicable Building Code, no warranty is expressed or implied in hereby given.	
DATE: 11-18-20		REVISION: 1		BY: JR		EXISTING TRASH ENCLOSURE ELEVATIONS	
SUNSHINE GASOLINE DISTRIBUTORS		MOBIL GAS STATION		6650 PINES BLVD		PEMBROKE PINES, FL 33024	
JOB # 19255		DWG # C-4.1		DAIAMN LESLIE FL REG # 73113			

SEP 2 0 2021



SITE SIGNAGE, PAVEMENT MARKING & STRIPING

SCALE: 1:20



CITY ACCESSIBILITY AND PAVEMENT MARKINGS & SIGNAGE REQUIREMENTS NOTES:

- ALL PAVEMENT MARKINGS AND SIGNAGE, INCLUDING THE SUPPORT POSTS, SHALL CONFORM TO "BROWARD COUNTY TRAFFIC ENGINEERING DIVISION STANDARDS" (BCTED) AND "THE MANUAL ON UNIFORM TRAFFIC CONTROL DEVICES" (MUTCD) STANDARDS.
- ALL MARKINGS SHALL BE THERMOPLASTIC MATERIAL MEETING THE BCTED AND FDOT STANDARDS, EXCEPT FOR THE PARKING SPACE MARKINGS WHICH MAY BE REFLECTORIZED PAINT MEETING THE BCTED STANDARDS AND FLORIDA DEPARTMENT OF TRANSPORTATION (FDOT) SPECIFICATIONS FOR STANDARD PAINT.
- ALL DOUBLE YELLOW PAVEMENT MARKINGS ASSOCIATED WITH STOP BARS ARE TO HAVE YELLOW/YELLOW RPM'S AT 20' O.C.
- REFLECTIVE PAVEMENT MARKERS (RPM'S) SHALL BE CLASS "B" OR EQUIVALENT APPLIED WITH EPOXY OR BITUMINOUS ADHESIVE PER FDOT'S 'APPROVED PRODUCTS LIST' (APL). PLACEMENT OF RPM'S SHALL BE IN ACCORDNACE WITH FDOT STANDARD PLANS INDEX NO. 706-001. PROVIDE THE FOLLOWING REFLECTIVE PAVEMENT MARKERS (RPM'S) IN THE CENTER OF THE NEAREST TRAVEL/STREET LANE:
BLUE (FIRE HYDRANTS)
WHITE (WATER MAIN VALVES IN ADJACENT GREEN/LANDSCAPE AREAS)
ORANGE (SEWER MANHOLES IN ADJACENT GREEN/LANDSCAPE AREAS)
GREEN (SEWER FORCE MAIN VALVES IN ADJACENT GREEN/LANDSCAPE AREAS)
- PAVEMENT MARKINGS AND SIGNAGE FOR ALL ACCESSIBLE PARKING SPACES SHALL BE IN ACCORDANCE WITH THE LATEST CITY STANDARD DETAIL R-32, 'ACCESSIBLE PARKING SPACE DETAILS'.
- WIDTH MEASUREMENTS OF PARKING SPACES AND ACCESS AISLES SHALL BE MEASURED FROM THE CENTERLINE OF THE WHITE MARKINGS, EXCEPT WHEN PARKING SPACES OR ACCESS AISLES ARE ADJACENT TO A CURB OR EDGE OF PAVEMENT AND NOT ADJACENT TO ANOTHER PARKING SPACE, THEN THE WIDTH MEASUREMENTS MAY INCLUDE THE FULL WIDTH OF THE LAST SPACE MARKING.
- ALL PARKING SPACES MUST HAVE A PAVEMENT MARKING ON EACH SIDE OF EACH SPACE TO IDENTIFY THE LIMITS OF THE SPACE.
- ALL SIDEWALK CURB RAMPS 5' OUTSIDE AND BEYOND THE BUILDING ENVELOPE SHALL BE PER FDOT STANDARD PLANS, INDEX NO. 522-002.
- ALL PEDESTRIAN/ACCESSIBLE CROSSINGS SHALL COMPLY WITH FDOT AND MUTCD STANDARDS. MID-BLOCK TYPE PEDESTRIAN/ACCESSIBLE CROSSINGS SHALL BE 10' IN WIDTH AND HAVE "SPECIAL EMPHASIS" PAVEMENT MARKINGS AND PEDESTRIAN/ACCESSIBLE CROSSING SIGNAGE AND PEDESTRIAN/ACCESSIBLE CROSSING ADVANCE WARNING SIGNAGE PER FDOT DESIGN MANUAL, SECTION 230 AND MUTCD STANDARDS. IF A CROSSING STRICTLY SERVES OR IS DESIGNATED FOR ACCESS TO ACCESSIBLE PARKING SPACES, THE USE OF ACCESSIBLE CROSSING (W11-9) SIGNAGE IS RECOMMENDED IN INSTEAD OF THE TYPICAL PEDESTRIAN CROSSING (W11-2) SIGNAGE. THERMOPLASTIC MATERIAL FOR "SPECIAL EMPHASIS" PAVEMENT MARKINGS (CROSSWALKS) SHALL BE PREFORMED OR HIGH FRICTION THERMOPLASTIC COMPLYING WITH FDOT STANDARD SPECIFICATIONS FOR ROAD AND BRIDGE CONSTRUCTION, SECTION 711.
- ALL ACCESSIBLE PARKING SPACES, ACCESSIBLE PARKING ACCESS AISLES, SIDEWALK CURB RAMPS, ACCESSIBLE ROUTES AND RAMPS MUST BE ADA COMPLIANT PER FLORIDA BUILDING CODE, SIXTH EDITION, 'ACCESSIBILITY'.
- ALL ACCESSIBLE PARKING SPACES, ACCESSIBLE PARKING ACCESS AISLES, SIDEWALK CURB RAMPS, ACCESSIBLE ROUTES AND RAMPS SHALL BE FIELD CHECKED AT THE TIME OF FINAL INSPECTION TO CONFIRM COMPLIANCE WITH ADA STANDARDS/REQUIREMENTS, INCLUDING SLOPING. NON-CONFORMING ACCESSIBLE PARKING SPACES, ACCESSIBLE PARKING ACCESS AISLES, ACCESSIBLE ROUTES AND RAMPS WILL BE REQUIRED TO BE CORRECTED FOR ACCEPTANCE OF THE PERMITTED WORK AND CLOSE-OUT OF THE ENGINEERING CONSTRUCTION PERMIT.
- ALL VEHICULAR TRAFFIC/PEDESTRIAN PAVEMENT MARKINGS AND SIGNAGE WITHIN THE PROJECT LIMITS SHALL BE FIELD CHECKED AT THE TIME OF FINAL INSPECTION TO CONFIRM COMPLIANCE WITH BCTED STANDARDS/REQUIREMENTS. ALL NON-CONFORMING PAVEMENT MARKINGS AND SIGNAGE, INCLUDING THE SUPPORT POSTS, WILL BE REQUIRED TO BE REPLACED FOR ACCEPTANCE OF THE PERMITTED WORK AND CLOSE-OUT OF THE ENGINEERING CONSTRUCTION PERMIT.
- A FINAL INSPECTION OF THE COMPLETED SITE ENGINEERING IMPROVEMENTS/WORK MUST BE SCHEDULED THROUGH THE CITY ENVIRONMENTAL SERVICES/ENGINEERING DIVISION FOR ACCEPTANCE OF THE WORK AND CLOSE-OUT OF THE ENGINEERING CONSTRUCTION PERMIT.

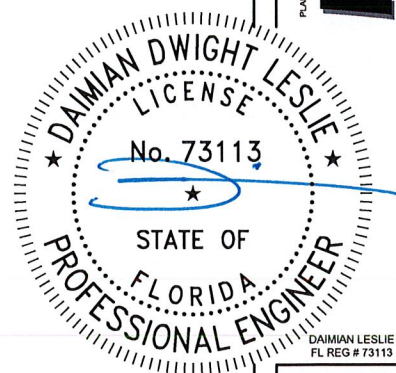
PAVEMENT MARKING & SIGNAGE PLAN

DATE	NO.	REVISION	BY
11-18-20	1	REVISION PER COMMENTS	JR
02-02-21	2	REVISION PER COMMENTS	JC

SCALE	AS NOTED	DATE	07-02-2020
DRAWN BY		PROPOSED GRADES BY	
CHECKED BY		S.S.#	
APPROVED BY			

Do Not Scale—Use Dimensions Only
To be used for construction only. All dimensions and quantities are approximate and subject to change without notice. No warranty is made by the engineer.

SUNSHINE GASOLINE DISTRIBUTORS
MOBIL GAS STATION
6650 PINES BLVD
PEMBROKE PINES, FL 33024



SEP 20 2021



Know what's below.
Call before you dig.

JOB # 19255

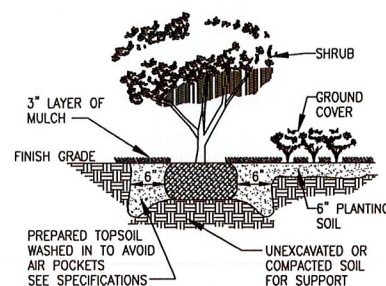
DWG # C-5



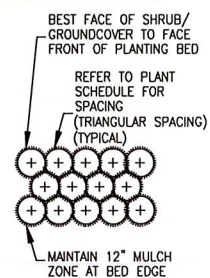
SCALE: 1" = 20'

1. ALL PLANT MATERIAL FURNISHED BY LANDSCAPE CONTRACTOR SHALL BE FLORIDA NO. 1 OR BETTER & SHALL BE INSTALLED AS SPECIFIED IN "GRADES AND STANDARDS FOR NURSERY PLANTS," STATE PLANT BOARD OF FLORIDA.
2. LANDSCAPE CONTRACTOR TO "REPAIR EXISTING" AUTOMATIC LAWN IRRIGATION SYSTEM GUARANTEEING 100% COVERAGE & MAINTAIN A 50% MIN. OVERLAP TO ALL LANDSCAPED AREAS. SYSTEM SHALL HAVE A RAIN SENSOR DEVICE AS REQUIRED. IRRIGATION SHALL BE FROM A NON-POTABLE WATER SOURCE.
3. A SIGHT VISIBILITY TRIANGLE SHALL BE PROVIDED. THE SITE VISIBILITY TRIANGLE SHALL PROVIDE UNOBSTRUCTED CROSS VISIBILITY FOR VEHICULAR, PEDESTRIAN, AND BICYCLE TRAFFIC AT LEVEL BETWEEN 30" & 8 FT. MEASURED FROM GRADE LEVEL AT ALL ENTRANCES, EXITS, AND INTERSECTIONS AS REQUIRED.
4. XERISCAPE LANDSCAPE PRINCIPLES SHALL BE APPLIED TO ALL SITES AS SPECIFIED IN THE "SOUTH FLORIDA WATER MANAGEMENT DISTRICTS XERISCAPE PLANT GUIDE II", UNDATED, AS REQUIRED.

DROUGHT TOLERANCE= SFWM GREEN BUILDING ORDINANCE REQUIRED SECTION 151.153#16 80%
* MODERATE OF PLANTS, TREES, AND GRASSES PER "SOUTH FLORIDA
** VERY WATER MANAGEMENT DISTRICT" RECOMMENDATIONS (LATEST EDITION).

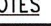
[illegible]

SHRUB PLANTING DETAIL
N.T.S.



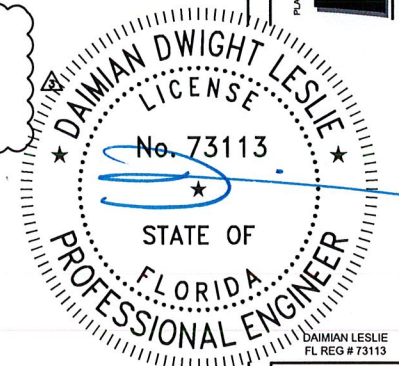
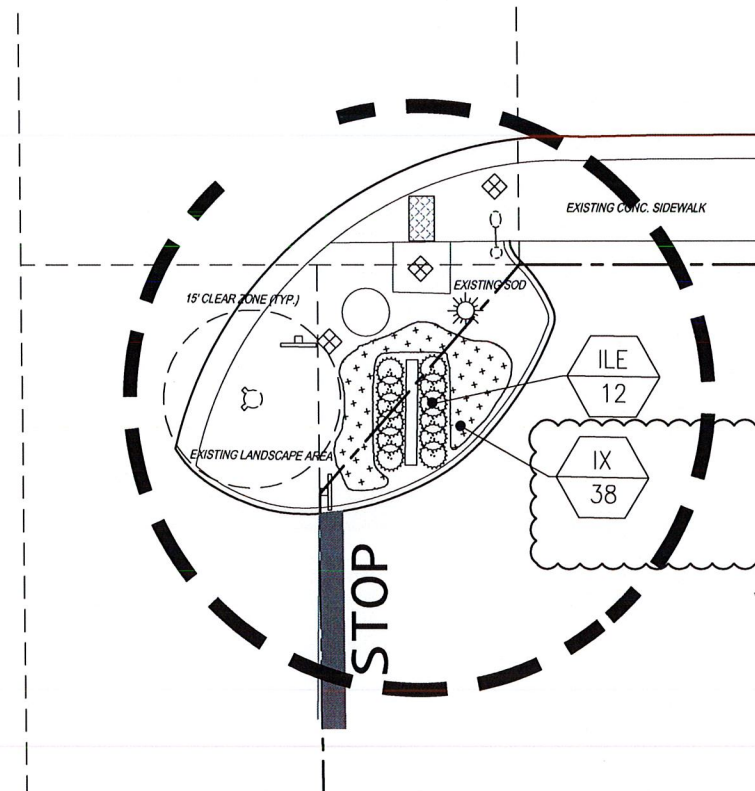
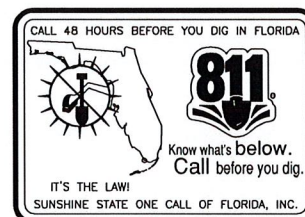
PLAN VIEW
N.T.S.

NOTES

 15' DIA. FIRE HYDRANT
CLEAR ZONE (TYP.) FIELD VERIFY LOCATIONS

NO TREE, BUSH, HEDGE, OR SHRUB, SHALL BE PLANTED WITHIN 15 FEET DIAMETER OF A HYDRANT AND ALL GRASS AND WEEDS SHALL BE KEPT TRIMMED SUCH THAT THE HYDRANT SHALL BE FULLY VISIBLE FROM THE STREET.

CITY ORDINANCE 93-25(E)



SEP 20 2021

[illegible]

SCALE:	AS NOTED	DATE:	07-02-2020
DRAWN BY:		PROPOSED GRADES BY:	
CHECKED BY:		S.S.#	
APPROVED BY:			

Do Not Scale—Use Dimensions Only

To the best of my knowledge, the plans and specifications submitted herewith comply with existing interpretations and provisions of the applicable Building Codes, no warranty

PLANS PREPARED BY:

MDM
engineering • environmental • construction
1151 W HILLSBORO BLVD, STE 401, DEERFIELD BEACH, FL 33442
(904) 427-3076
CA #004857

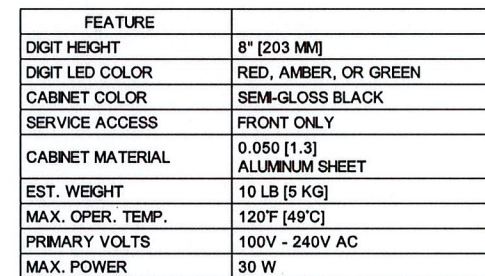
JOB # 19255

DWG # L-1

COLOR MATERIAL BOARD

 3M 3630-97 Bristol Blue

☐ White

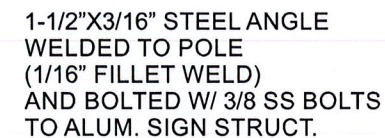


FEATURE	
DIGIT HEIGHT	8" [203 MM]
DIGIT LED COLOR	RED, AMBER, OR GREEN
CABINET COLOR	SEMI-GLOSS BLACK
SERVICE ACCESS	FRONT ONLY
CABINET MATERIAL	0.050 [1.3] ALUMINUM SHEET
EST. WEIGHT	10 LB [5 KG]
MAX. OPER. TEMP.	120°F [49°C]
PRIMARY VOLTS	100V - 240V AC
MAX. POWER	30 W

Gas Pricing SqFt-18' (48" x 54")
Minimum Allowable-18-24' sqft



LANDSCAPE TO BE 24" H and A 12" SPREAD
LANDSCAPE TO CLARIFIED BY AND BE DONE BY OTHERS



#12 x 1-1/2" S.S. Screws
Min. 3'0" On Centers

SOIL STATEMENT
Visual inspection indicates 2,500 P.S.F. for which footings are designed. If a bearing capacity of less than 2,500 P.S.F. is encountered at site, the engineer should be notified before proceeding with work.

ELECTRICAL NOTES ILLUMINATED CABINETS

Primary wire size - #12 THWN
Disconnect switch- at base of sign, 20 amp 2 pole, time clock or photocell
Photocell pairs with EMS systems controls all signage and meets criteria C-405
Maximum load - 16 amps 120 volts per circuit maximum circuit size 20 amps per NEC 600-6A
Power Supply - 120/225 Volt to 12 Volt DC output : 60 watts
Illumination: T-12 TAP OUT STICKS 47 WATTS PER STICK, 8 STICKS REQUIRED @ 12" SPACING
Conduit - minimum 1/2"
Total sign load - 8.4 amps 120 volts
Total sign circuits - 1
All components shall be U.L. approved
Ballasts shall have independent U.L. approval (fused where required)
All installations shall be in compliance with N.E.C. and state, county, or local codes
All signs shall be bonded to building equipment bonding conductor per N.E.C. 250
Design shall comply with the 7th edition of the FBC 2020 (and other codes)



CUSTOMER:



6650 HOLLYWOOD BLVD.
PEMBROKE PINES, FL 33024

DRAWN BY: PAM REEVES
DATE DRAWN: 02.04.19
R1: 06.20.19
R2: COMMENTS 10.09.19
R3: COMMENTS-08.02.2021

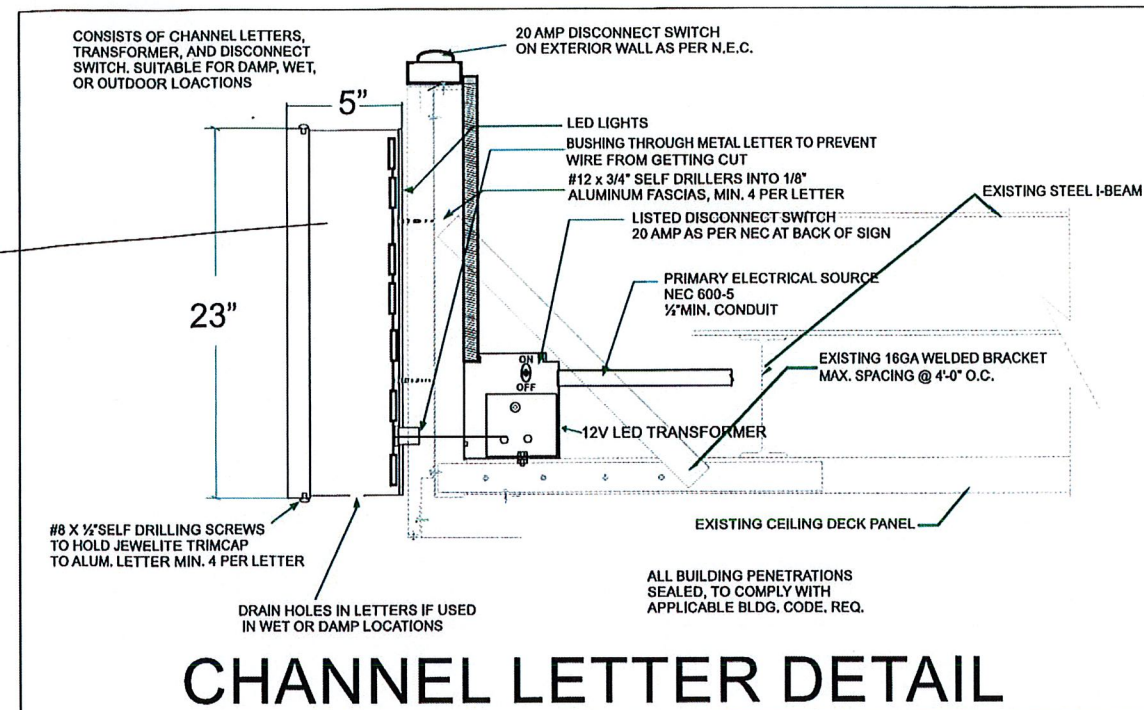
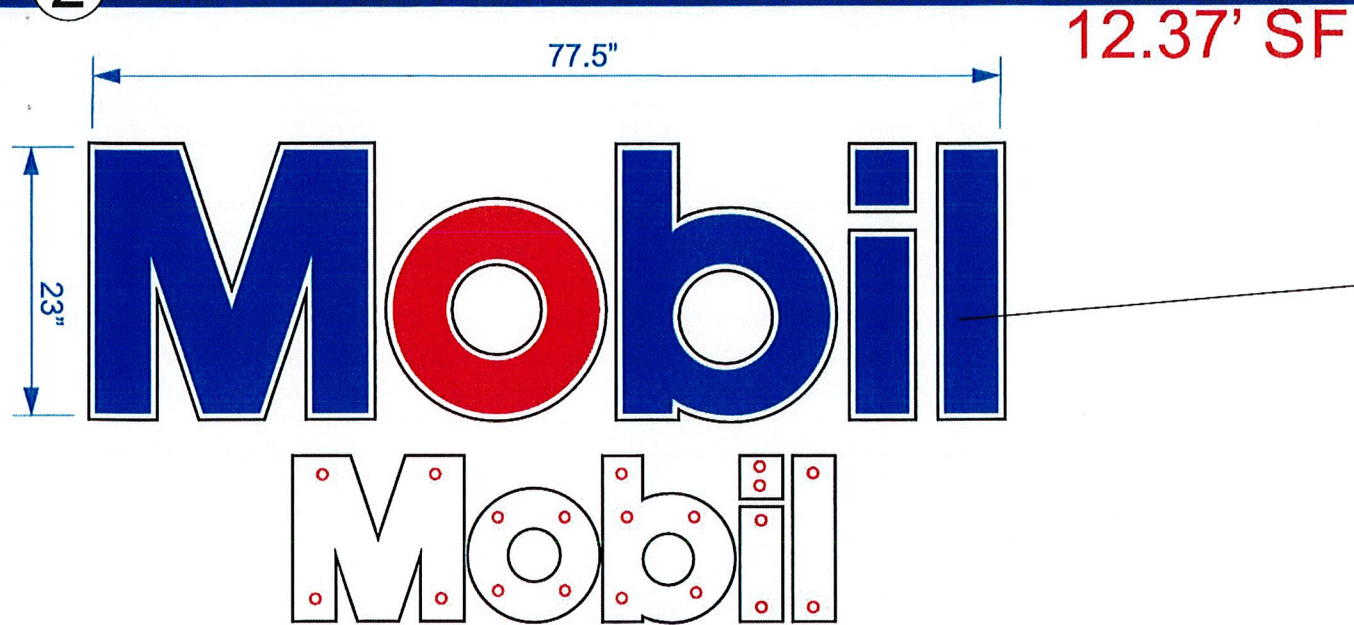


Electrical Qualifier: Stephen M. Kemp

State of: Florida
County of: Palm Beach
The forgoing document was acknowledged
before me _____ day of _____, _____

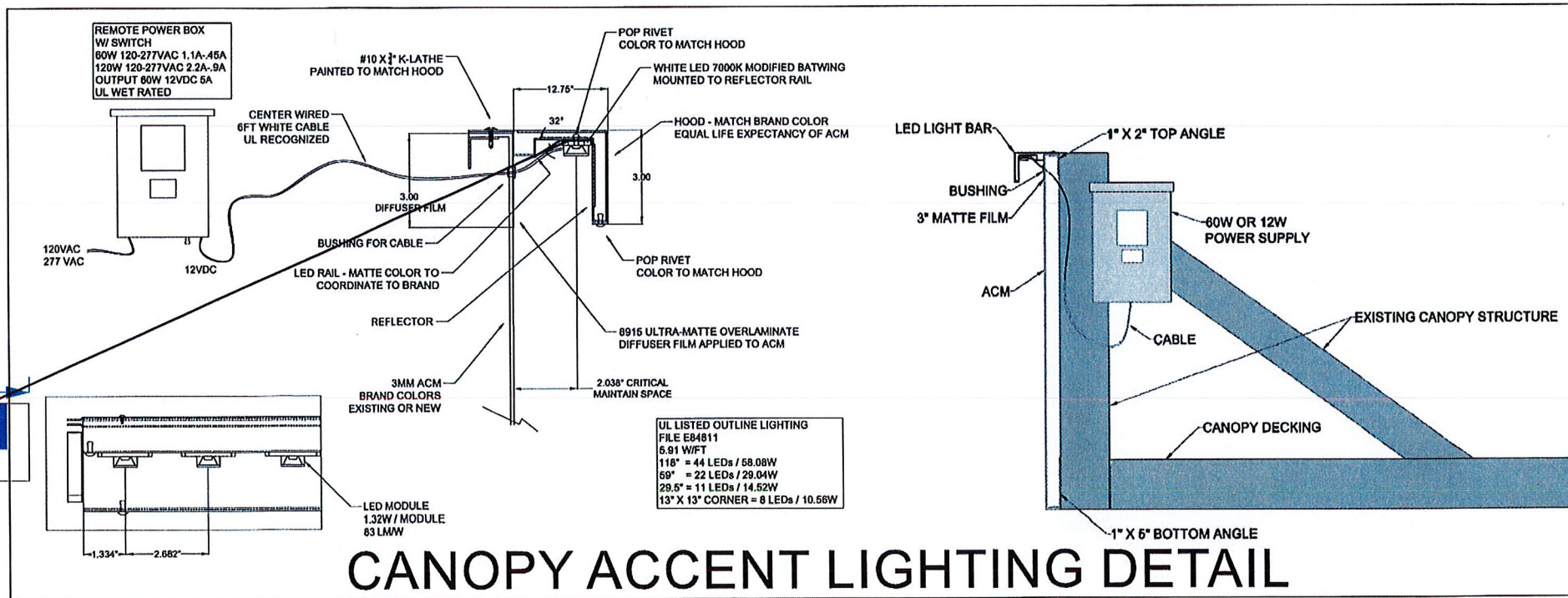
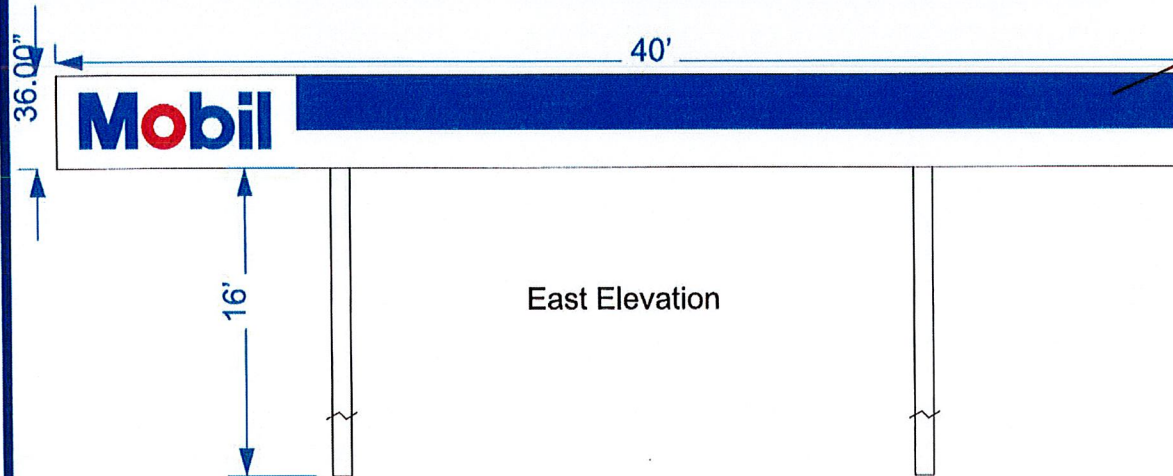
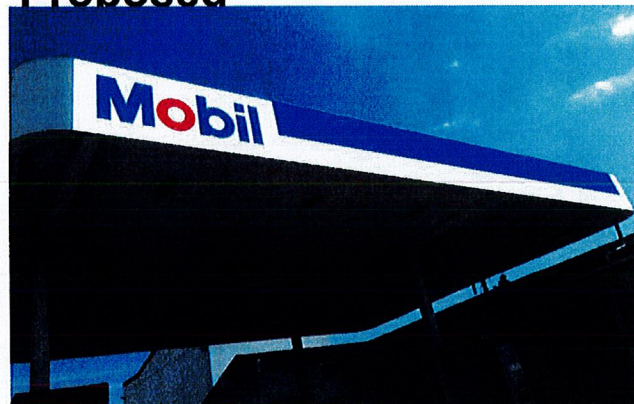
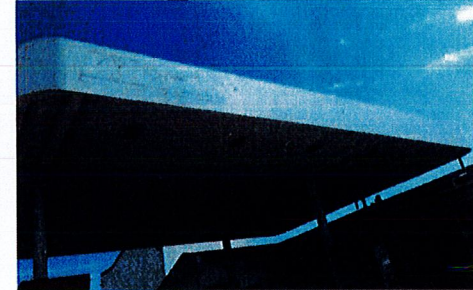
Your Name Here, Notary Public
My Commission Expires:

2 CANOPY CHANNEL LETTERS & LIGHTING-EAST ELEVATION



Existing

Proposed



ELECTRICAL NOTES ILLUMINATED CABINETS

Primary wire size - #12 THWN
Disconnect switch - at base of sign, 20 amp single pole, timeclock at panel room and a 10hr battery backup
Maximum load - 16 amps 120 volts per circuit maximum circuit size 20 amps per NEC 600-6A
Power Supply - 120/225 Volt to 12 Volt DC output : 60 watts
Illumination - Blue View brand LED - 7.5 watts per strip -
Conduit - minimum 1/2"
Total sign load - 2 amps 120 volts
Total sign circuits - 1
All components shall be U.L. approved
Ballasts shall have independent U.L. approval (fused where required)
All installations shall be in compliance with N.E.C. and state, county, or local codes
All signs shall be bonded to building equipment bonding conductor per N.E.C. 250

KEMP
SIGNS AND SERVICE

1740 HILL AVENUE
WEST PALM BEACH, FL.
33407
561-840-6382
(FAX) 561-840-6385

CUSTOMER:
Mobil
6650 HOLLYWOOD BLVD.
PEMBROKE PINES, FL 33024

DRAWN BY: PAM REEVES
DATE DRAWN: 02.04.19

SCALE: AS NOTED

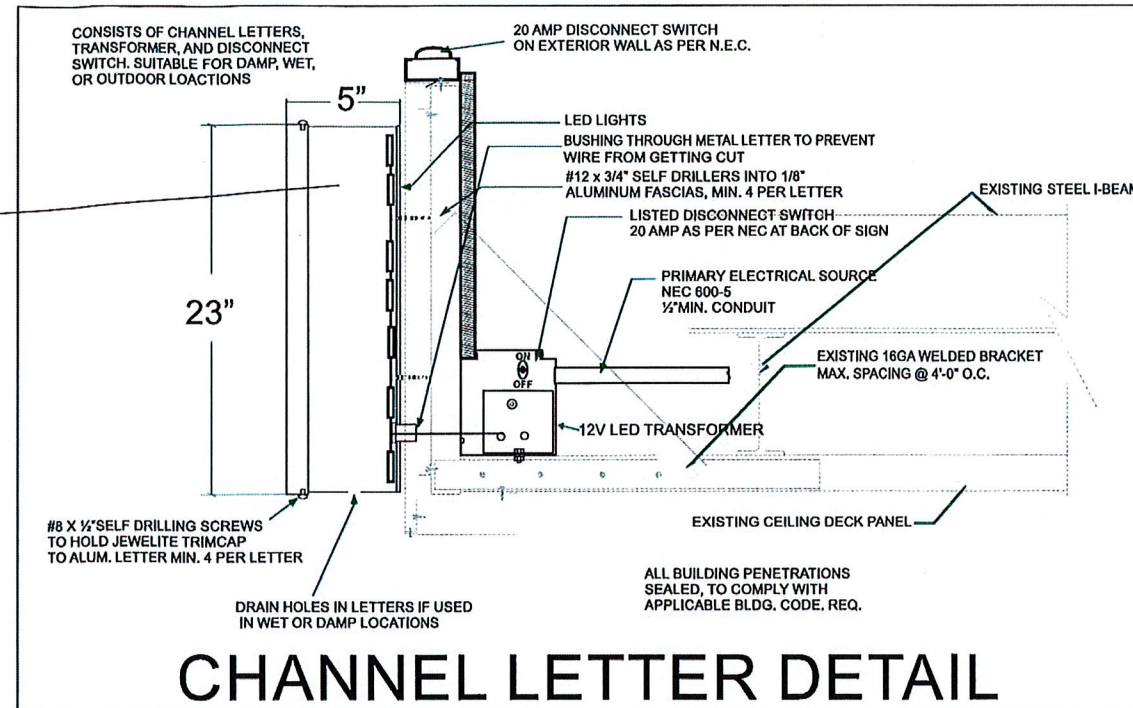
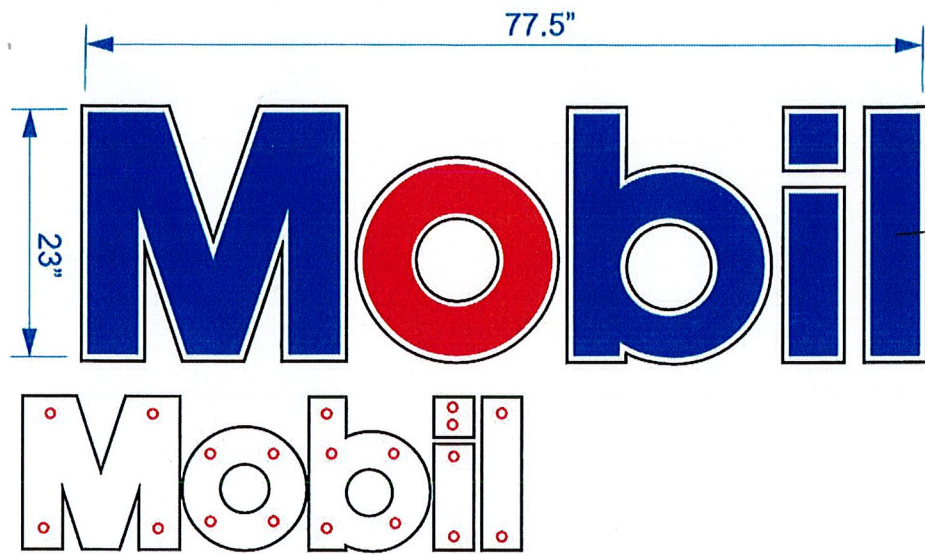


Christian Langley
Florida PE #67382
Cert of Auth #31124
1200 N Federal Hwy, #200
Boca Raton, FL 33432
1-888-371-3113

Wall components & cladding: • Sign Height = 30 ft. max • Zone 4: ± 40.8 psf • Zone 5: ± 51.9 psf
• Risk Category 2 Struct. • ASD Load Coeff = 0.6
WIND LOADS: • Exposure 'C' • V=170 mph

3 CANOPY CHANNEL LETTERS & LIGHTING-WEST ELEVATION

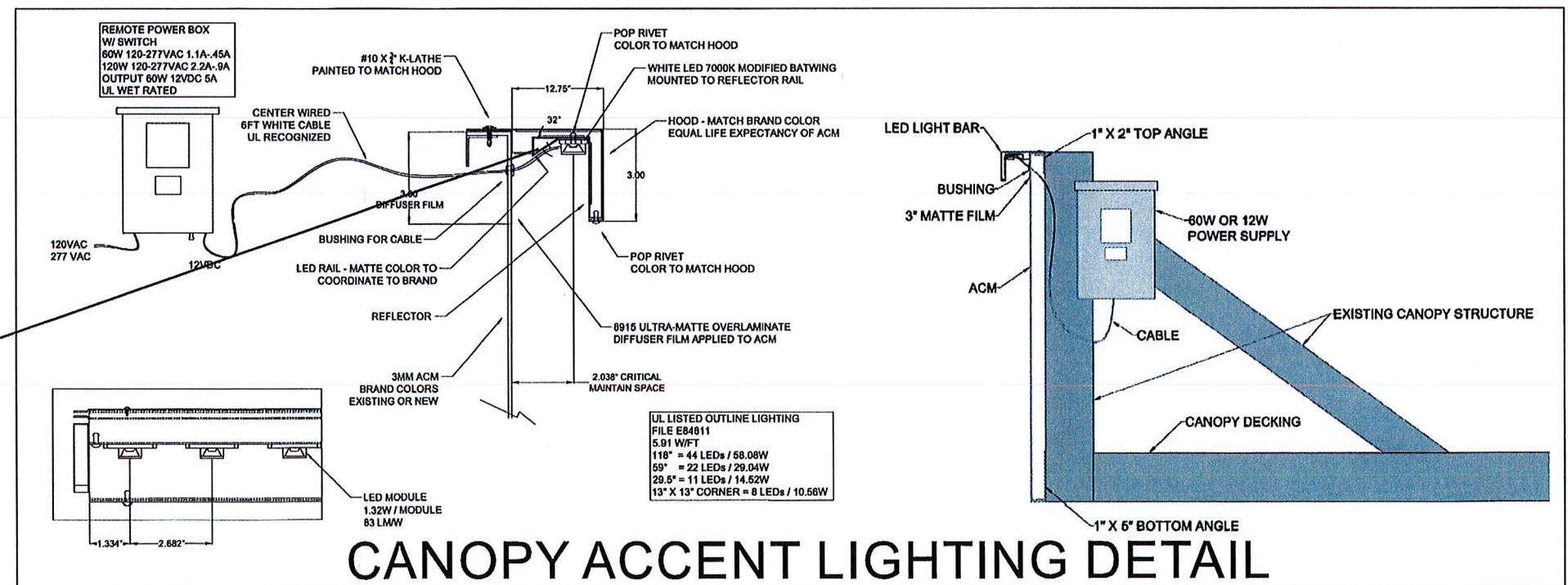
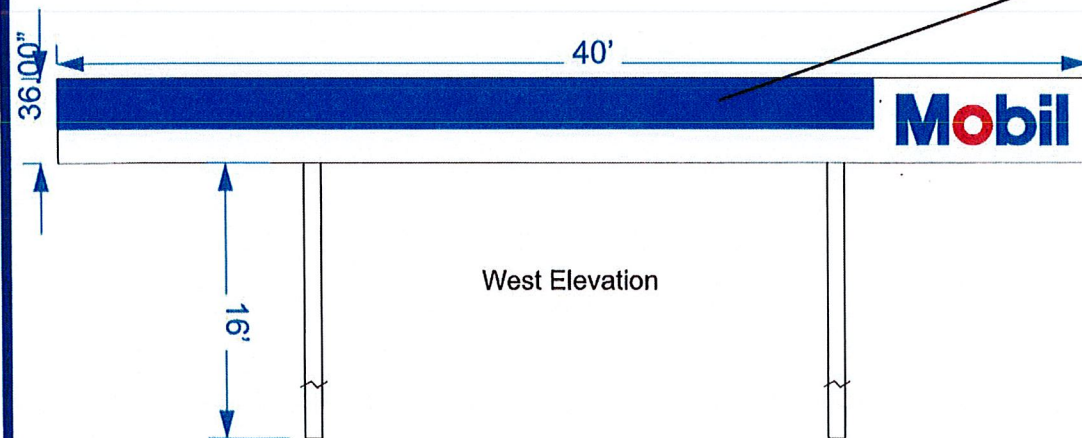
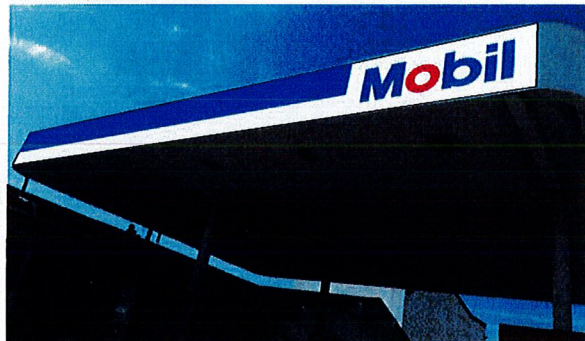
12.37' SF



Existing



Proposed



ELECTRICAL NOTES ILLUMINATED CABINETS
 Primary wire size - #12 THWN
 Disconnect switch - at base of sign, 20 amp single pole, timeclock at panel room and a 10hr battery backup
 Maximum load - 16 amps 120 volts per circuit maximum circuit size 20 amps per NEC 600-6A
 Power Supply - 120/225 Volt to 12 Volt DC output : 60 watts
 Illumination - Blue View brand LED - 7.5 watts per strip - Conduit - minimum 1/2"
 Total sign load - 2 amps 120 volts
 Total sign circuits - 1
 All components shall be U.L. approved
 Ballasts shall have independent U.L. approval (fused where required)
 All installations shall be in compliance with N.E.C. and state, county, or local codes
 All signs shall be bonded to building equipment bonding conductor per N.E.C. 250



1740 HILL AVENUE
 WEST PALM BEACH, FL.
 33407
 561-840-6382
 (FAX) 561-840-6385

CUSTOMER:
Mobil
 6650 HOLLYWOOD BLVD.
 PEMBROKE PINES, FL 33024

DRAWN BY: PAM REEVES
 DATE DRAWN: 02.04.19

SCALE: AS NOTED



Christian Langley
 Florida PE #67382
 Cert of Auth #31124

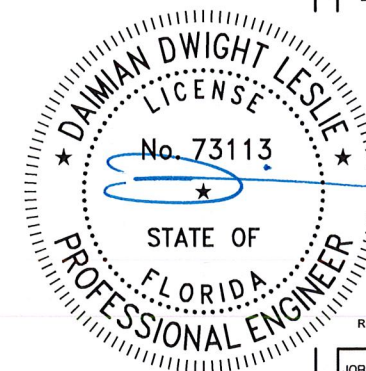
ASCE 7-10 • V=170 mph • Risk Category 2 Struct. • Exposure 'C' • ASD Load Coeff = 0.6
 WIND LOADS: • Sign Height = 30 ft max • Wall components & cladding: • Zone 4: ± 40.8 psf • Zone 5: ± 51.9 psf



Synergized!



"SYNERGY" DISPENSERS RE-BRAND/RE-IMAGING, TYP
SCALE: NTS



PRINTED COPIES OF THIS DOCUMENT ARE NOT CONSIDERED
SIGNED AND SEALED AND THE SHA AUTHENTICATION CODE
MUST BE VERIFIED ON ANY ELECTRONIC COPIES

RICHARD R. MORRIS
FL REG # 34748

JOB # 19255

SYNERGY TYPICAL COLOR RENDERING

SUNSHINE GASOLINE DISTRIBUTORS

MOBIL GAS STATION

6650 PINES BLVD
DEMBROKE PINES FL 32034

BY:

REVISION:

DATE:	NO:
-------	-----

20

DATE: 07-02-2011

SCALE: AS N

S.S.#

2

Do Not Scale—Use Dimensions Only

PLANS PREPARED BY:

MDM

Engineering • environmental • construction
151 W HILLSBORO BLVD, STE 401, DEERFIELD BEACH, FL 33442
CA #004857 (954) 427-3076

SEP 20 2021